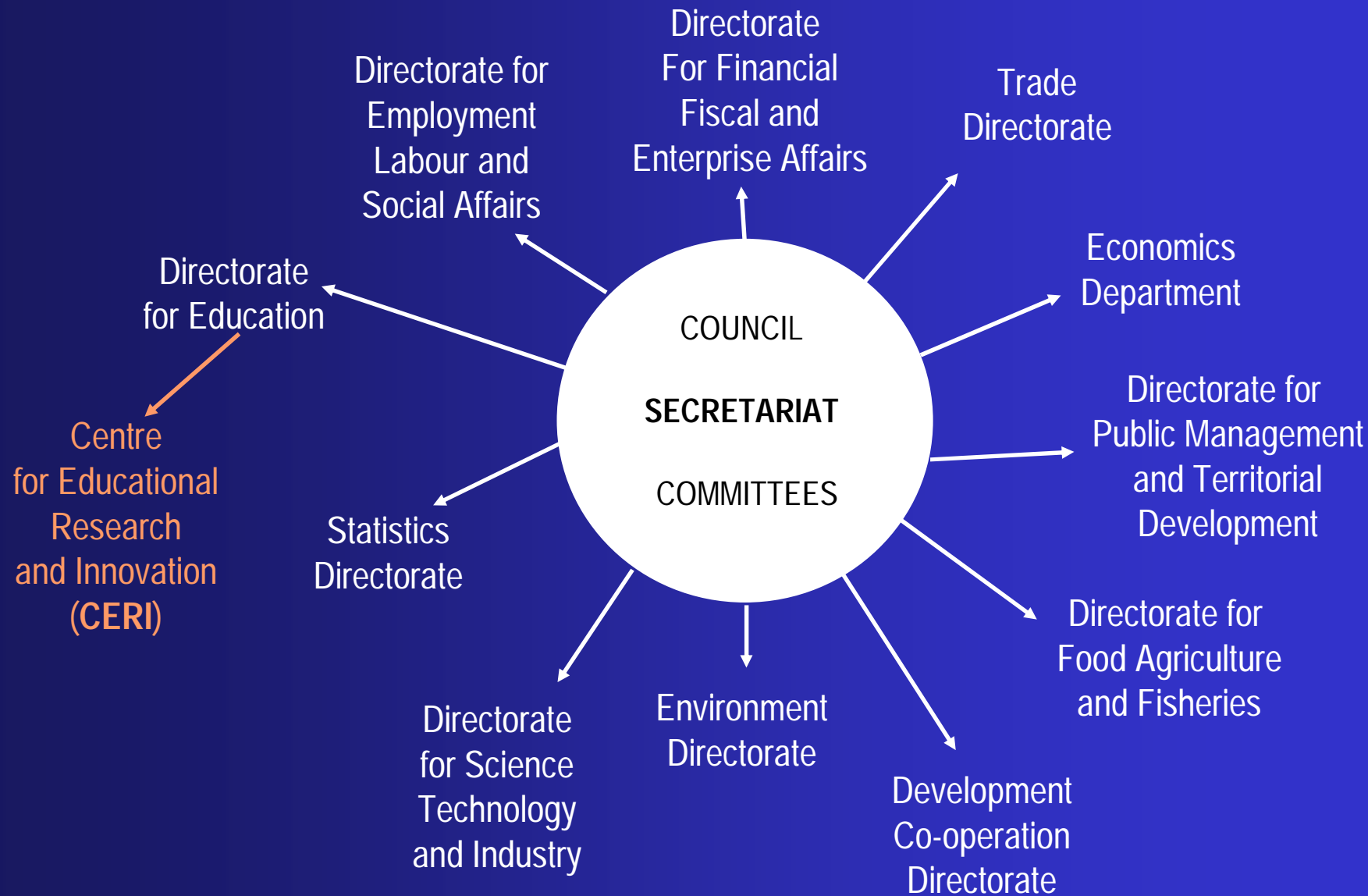


# Centre for Educational Research and Innovation (CERI)

**Tom Schuller**  
**Head of CERI**

**International workshop on Cross-Border Higher Education for Capacity Development**  
**14-15 September 2006, The Hague**





Education and  
Training Policy  
Division

Indicators and  
Analysis  
Division

**Directorate  
for  
Education**

Centre for  
Education  
Research and  
Innovation

IMHE/PEB

# Key messages for OECD agenda from CEOs Copenhagen meeting

- Frameworks and evidence on economic and non-economic returns to educational investment
- Analyses reconciling quality, equity and efficiency
- Retaining a lifelong learning perspective, including vocational education
- Handling migration, cultural diversity and globalisation

## **International policy research: functions/types**

- **Generating stats/rankings/tables**
- **Benchmarking**
- **Evaluating policy impact**
- **Analysing trends and innovations**
- **Identifying and disseminating good practice**
- **Developing/clarifying concepts**
- **Agenda-setting**

# Current/recent CERI projects on HE

- **Internationalisation of higher education**  
[www.oecd.org/edu/internationalisation](http://www.oecd.org/edu/internationalisation)
- **E- Learning in post-secondary education**  
[www.oecd.org/edu/ict/elearning](http://www.oecd.org/edu/ict/elearning)
- **Open educational resources**  
[www.oecd.org/edu/oer](http://www.oecd.org/edu/oer)
- **University futures**  
[www.oecd.org/edu/universityfutures](http://www.oecd.org/edu/universityfutures)

**Thank you**

**[Tom.Schuller@oecd.org](mailto:Tom.Schuller@oecd.org)**

**To sign up for CERI Update (electronic  
bulletin) go to [www.oecd.org/edu/ceri](http://www.oecd.org/edu/ceri)**