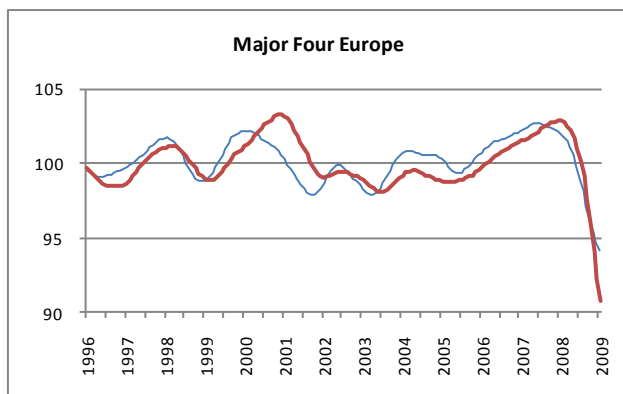
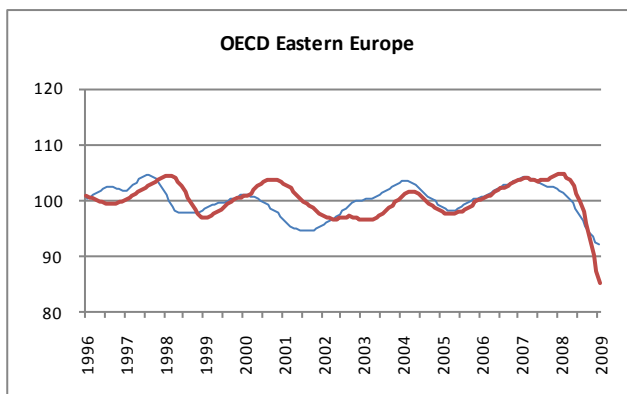
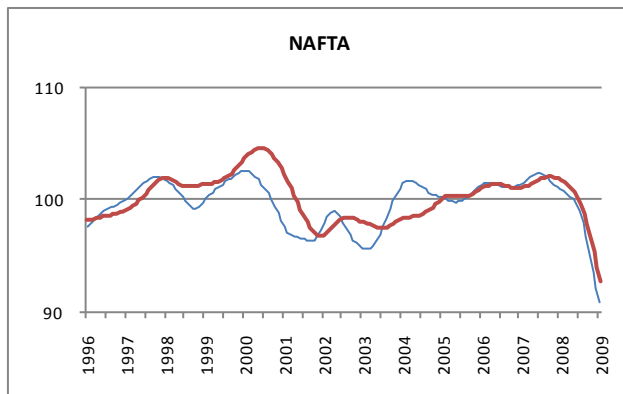
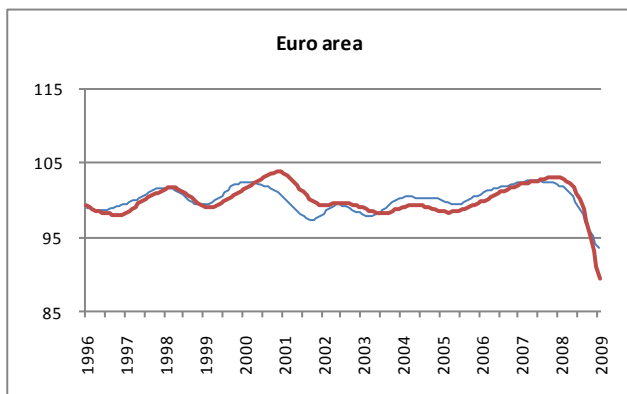
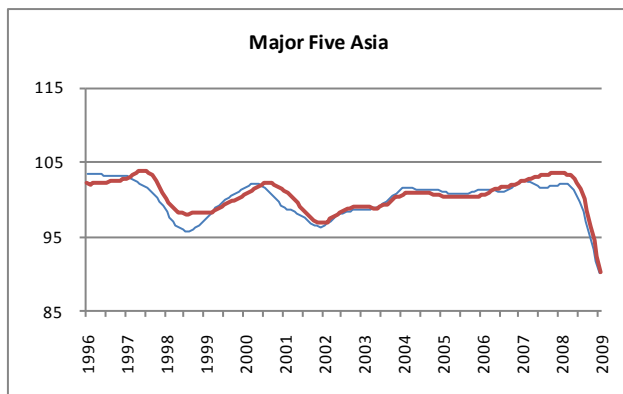
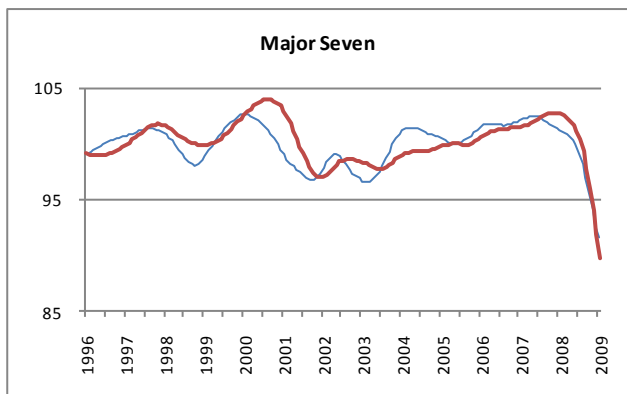
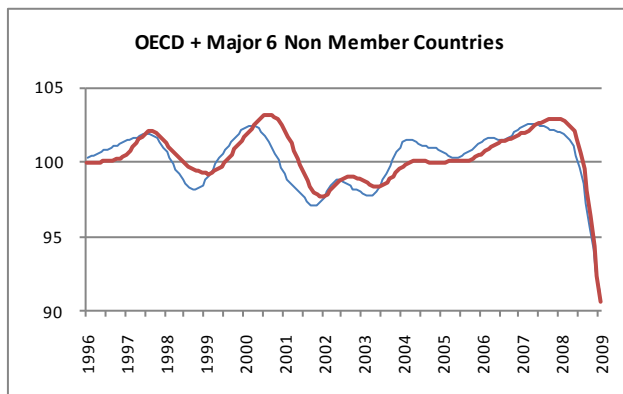
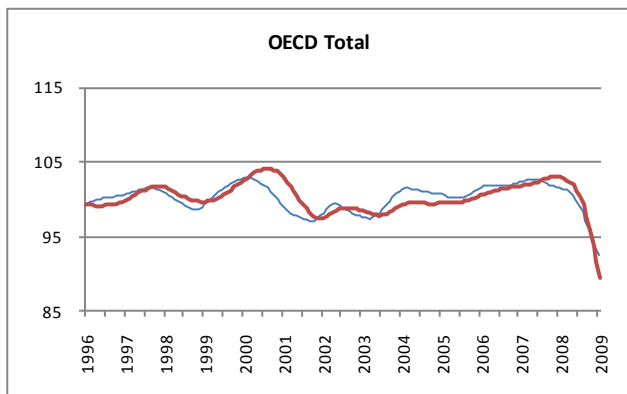


AREA TOTALS

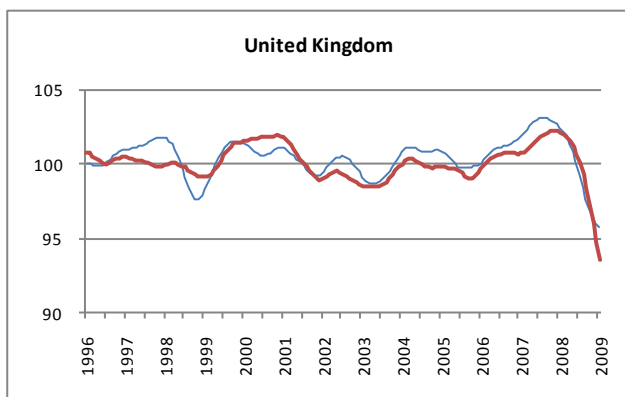
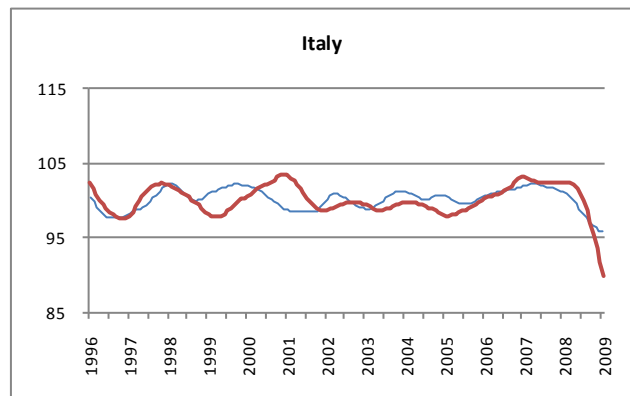
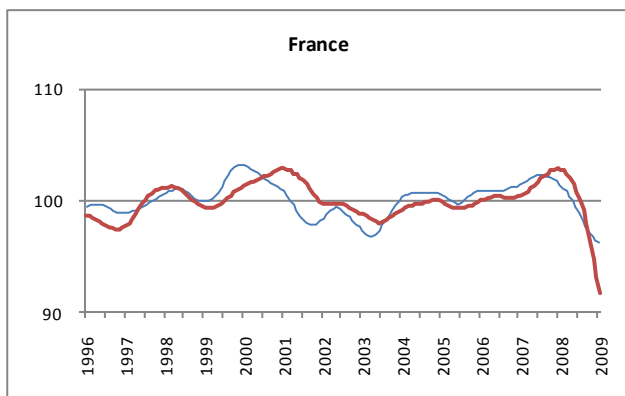
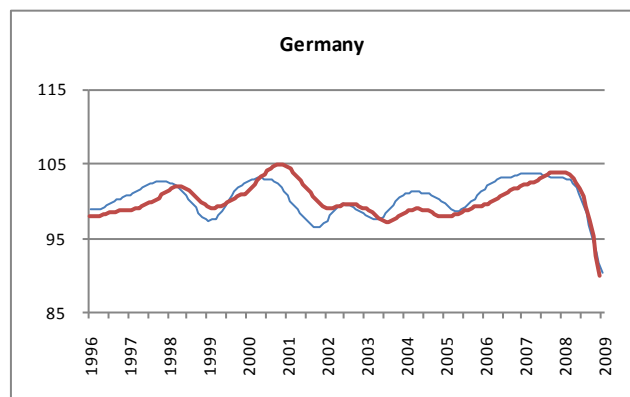
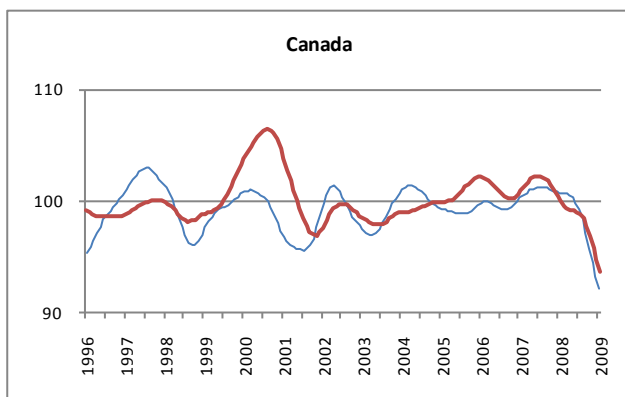
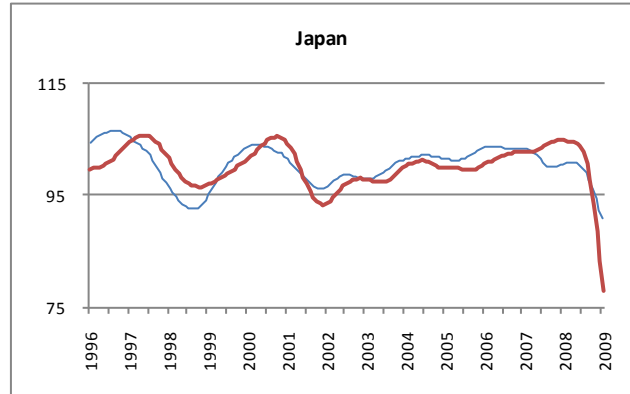
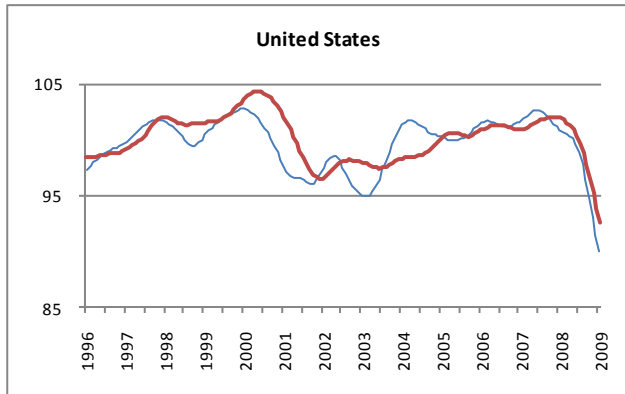
— Reference series — Composite leading indicators



	OECD Total	OECD + Major 6 Non Member Countries	Major Seven	Major Five Asia	Euro area	NAFTA	OECD Europe	Major Four Europe	OECD Eastern Europe
Amplitude adjusted (long term average =100)									
January 2008	101.44	101.92	101.29	102.09	102.08	100.93	102.13	102.04	101.79
February 2008	101.28	101.80	101.14	102.13	101.83	100.74	101.87	101.82	101.35
March 2008	101.07	101.63	100.98	102.06	101.49	100.56	101.53	101.52	100.81
April 2008	100.80	101.37	100.77	101.82	101.06	100.38	101.09	101.12	100.19
May 2008	100.41	100.99	100.45	101.39	100.53	100.11	100.54	100.59	99.46
June 2008	99.87	100.42	99.96	100.72	99.87	99.69	99.85	99.89	98.62
July 2008	99.13	99.61	99.22	99.77	99.08	99.00	99.02	99.05	97.67
August 2008	98.17	98.51	98.22	98.50	98.17	97.97	98.08	98.13	96.60
September 2008	97.00	97.15	96.98	96.92	97.17	96.63	97.05	97.16	95.49
October 2008	95.71	95.61	95.57	95.14	96.13	95.08	96.01	96.21	94.40
November 2008	94.43	94.06	94.14	93.32	95.16	93.51	95.06	95.36	93.45
December 2008	93.27	92.62	92.79	91.60	94.33	92.05	94.30	94.67	92.70
January 2009	92.33	91.31	91.66	89.97	93.68	90.81	93.72	94.14	92.21
Change from previous month (point)									
January 2008	-0.13	-0.09	-0.15	0.09	-0.19	-0.22	-0.19	-0.17	-0.32
February 2008	-0.16	-0.12	-0.14	0.03	-0.26	-0.19	-0.26	-0.22	-0.43
March 2008	-0.21	-0.17	-0.16	-0.07	-0.34	-0.18	-0.34	-0.30	-0.55
April 2008	-0.28	-0.25	-0.21	-0.23	-0.43	-0.18	-0.44	-0.40	-0.62
May 2008	-0.39	-0.38	-0.31	-0.43	-0.53	-0.27	-0.55	-0.54	-0.73
June 2008	-0.54	-0.57	-0.50	-0.67	-0.66	-0.42	-0.69	-0.70	-0.84
July 2008	-0.74	-0.81	-0.74	-0.95	-0.79	-0.69	-0.83	-0.84	-0.96
August 2008	-0.96	-1.09	-1.00	-1.27	-0.91	-1.03	-0.94	-0.92	-1.07
September 2008	-1.17	-1.36	-1.24	-1.58	-1.00	-1.34	-1.03	-0.97	-1.11
October 2008	-1.29	-1.54	-1.41	-1.78	-1.04	-1.55	-1.04	-0.95	-1.08
November 2008	-1.28	-1.55	-1.43	-1.82	-0.97	-1.57	-0.94	-0.84	-0.95
December 2008	-1.16	-1.44	-1.35	-1.73	-0.83	-1.46	-0.76	-0.69	-0.75
January 2009	-0.94	-1.30	-1.13	-1.62	-0.65	-1.24	-0.57	-0.53	-0.50
Year on Year change (point)									
January 2008	-0.81	-0.33	-0.86	-0.42	-0.44	-0.52	-0.45	-0.22	-2.14
February 2008	-1.11	-0.57	-1.14	-0.48	-0.78	-0.87	-0.85	-0.57	-2.76
March 2008	-1.44	-0.83	-1.44	-0.50	-1.18	-1.27	-1.30	-0.99	-3.35
April 2008	-1.81	-1.13	-1.76	-0.58	-1.66	-1.68	-1.82	-1.51	-3.84
May 2008	-2.21	-1.51	-2.14	-0.78	-2.22	-2.17	-2.40	-2.14	-4.33
June 2008	-2.69	-2.04	-2.61	-1.20	-2.87	-2.73	-3.08	-2.87	-4.83
July 2008	-3.28	-2.78	-3.23	-1.95	-3.61	-3.44	-3.83	-3.67	-5.45
August 2008	-4.03	-3.79	-4.02	-3.12	-4.44	-4.34	-4.67	-4.50	-6.22
September 2008	-5.00	-5.08	-5.04	-4.73	-5.37	-5.43	-5.60	-5.38	-7.11
October 2008	-6.13	-6.55	-6.24	-6.63	-6.34	-6.68	-6.55	-6.25	-8.05
November 2008	-7.27	-8.03	-7.48	-8.58	-7.23	-7.93	-7.40	-6.99	-8.87
December 2008	-8.30	-9.39	-8.65	-10.41	-7.94	-9.11	-8.02	-7.55	-9.40
January 2009	-9.11	-10.61	-9.63	-12.12	-8.40	-10.12	-8.41	-7.90	-9.58

MAJOR SEVEN OECD COUNTRIES

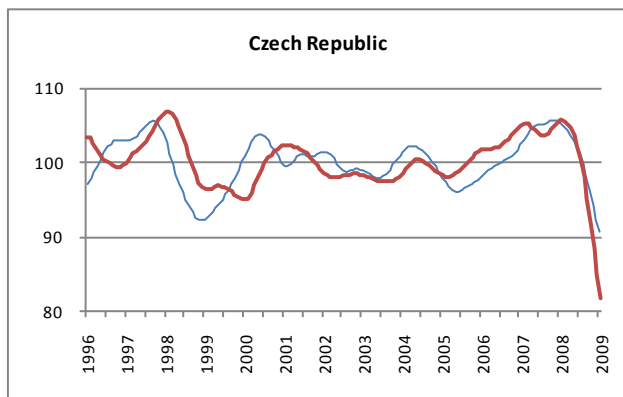
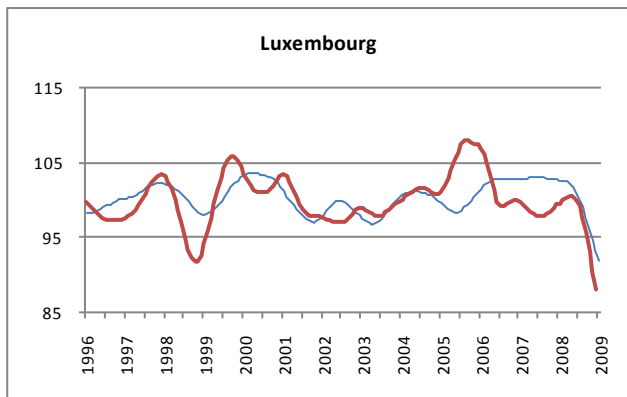
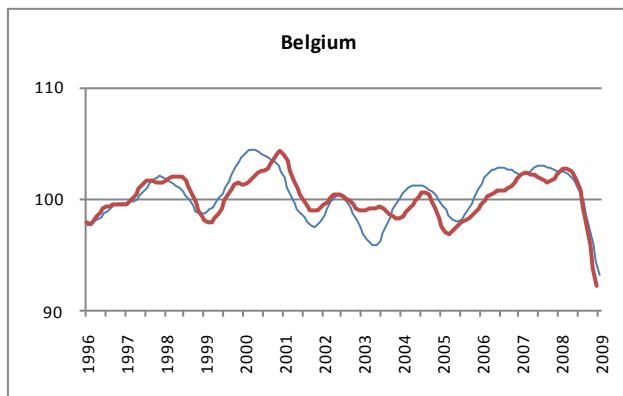
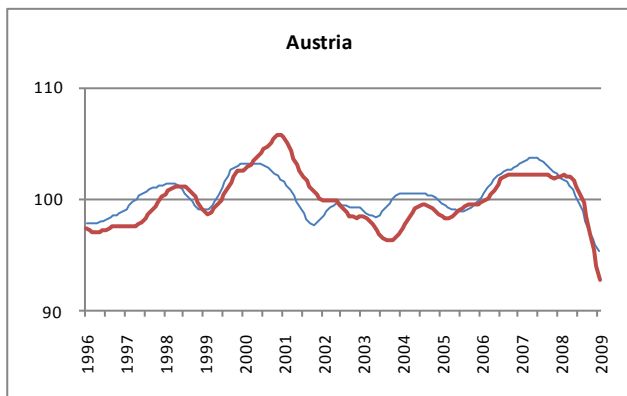
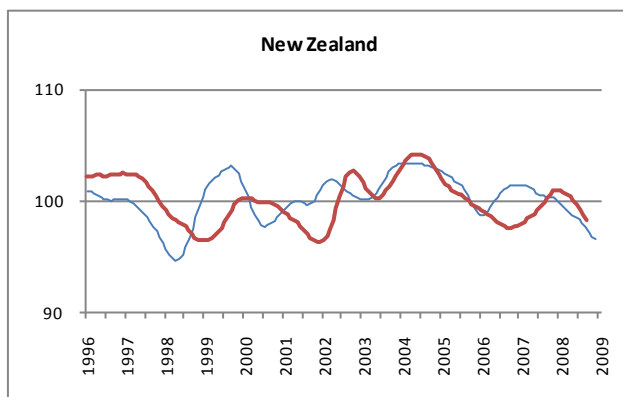
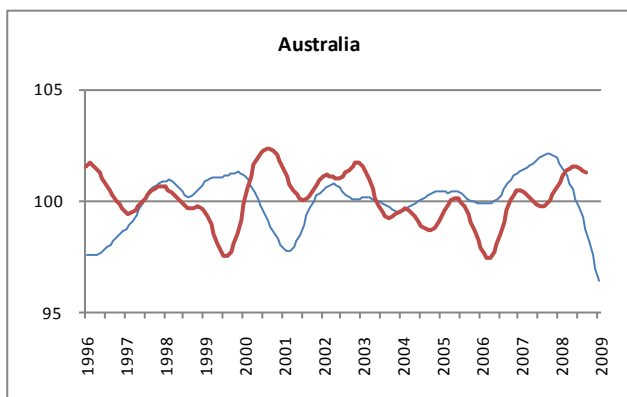
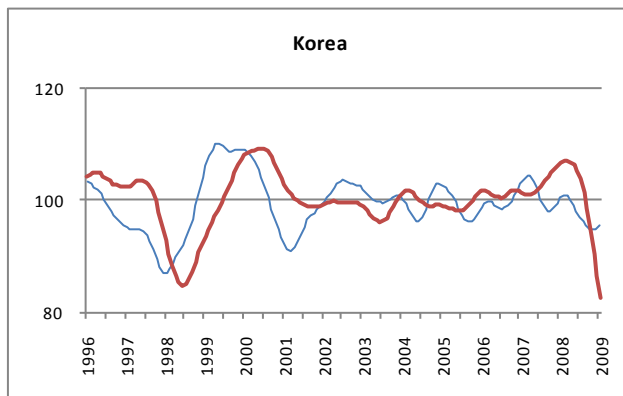
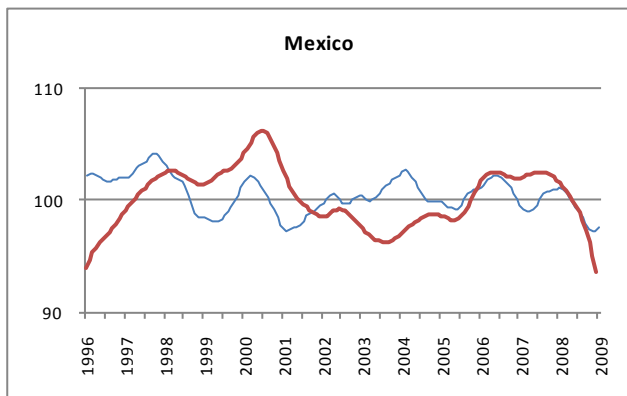
— Reference series — Composite leading indicators



	Canada	United States	Japan	France	Germany	Italy	United Kingdom
Amplitude adjusted (long term average =100)							
January 2008	100.79	100.92	100.61	101.40	102.97	101.03	102.42
February 2008	100.79	100.71	100.79	101.08	102.88	100.75	102.14
March 2008	100.75	100.54	100.88	100.75	102.68	100.39	101.81
April 2008	100.61	100.37	100.93	100.38	102.32	99.95	101.37
May 2008	100.35	100.12	100.82	99.93	101.75	99.42	100.80
June 2008	99.90	99.69	100.51	99.39	100.88	98.79	100.11
July 2008	99.25	98.97	99.91	98.81	99.70	98.12	99.31
August 2008	98.36	97.89	98.99	98.23	98.24	97.50	98.48
September 2008	97.20	96.47	97.75	97.68	96.53	96.96	97.68
October 2008	95.85	94.81	96.20	97.14	94.73	96.51	96.97
November 2008	94.48	93.11	94.42	96.71	93.00	96.16	96.42
December 2008	93.25	91.50	92.55	96.45	91.49	95.81	96.05
January 2009	92.21	90.12	91.01	96.23	90.25	95.71	95.75
Change from previous month (point)							
January 2008	-0.05	-0.27	0.23	-0.28	-0.03	-0.23	-0.21
February 2008	0.01	-0.21	0.18	-0.31	-0.08	-0.28	-0.27
March 2008	-0.04	-0.17	0.10	-0.33	-0.20	-0.36	-0.33
April 2008	-0.14	-0.17	0.04	-0.37	-0.36	-0.44	-0.44
May 2008	-0.27	-0.25	-0.10	-0.45	-0.57	-0.53	-0.57
June 2008	-0.45	-0.43	-0.32	-0.54	-0.87	-0.63	-0.69
July 2008	-0.65	-0.72	-0.60	-0.58	-1.17	-0.67	-0.80
August 2008	-0.89	-1.08	-0.92	-0.58	-1.47	-0.62	-0.83
September 2008	-1.16	-1.42	-1.23	-0.55	-1.70	-0.54	-0.80
October 2008	-1.35	-1.66	-1.55	-0.54	-1.80	-0.46	-0.71
November 2008	-1.37	-1.70	-1.78	-0.43	-1.73	-0.35	-0.54
December 2008	-1.23	-1.61	-1.87	-0.27	-1.51	-0.35	-0.37
January 2009	-1.04	-1.38	-1.55	-0.22	-1.25	-0.10	-0.31
Year on Year change (point)							
January 2008	0.43	-0.78	-2.80	0.01	-0.59	-0.92	0.65
February 2008	0.20	-1.19	-2.52	-0.45	-0.69	-1.33	0.14
March 2008	-0.07	-1.61	-2.17	-0.94	-0.90	-1.79	-0.46
April 2008	-0.40	-2.05	-1.73	-1.50	-1.29	-2.23	-1.17
May 2008	-0.83	-2.51	-1.29	-2.14	-1.86	-2.69	-1.99
June 2008	-1.39	-3.07	-0.96	-2.81	-2.68	-3.21	-2.88
July 2008	-2.10	-3.77	-0.90	-3.44	-3.71	-3.74	-3.76
August 2008	-2.99	-4.65	-1.28	-3.98	-5.00	-4.24	-4.60
September 2008	-4.09	-5.77	-2.23	-4.47	-6.56	-4.70	-5.37
October 2008	-5.31	-7.08	-3.78	-4.91	-8.28	-5.07	-5.98
November 2008	-6.50	-8.41	-5.72	-5.18	-10.00	-5.29	-6.38
December 2008	-7.59	-9.69	-7.83	-5.23	-11.50	-5.45	-6.58
January 2009	-8.58	-10.80	-9.60	-5.16	-12.72	-5.32	-6.67

OTHER OECD MEMBER COUNTRIES

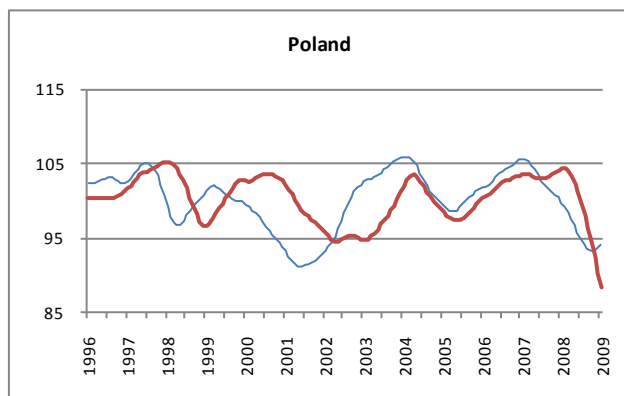
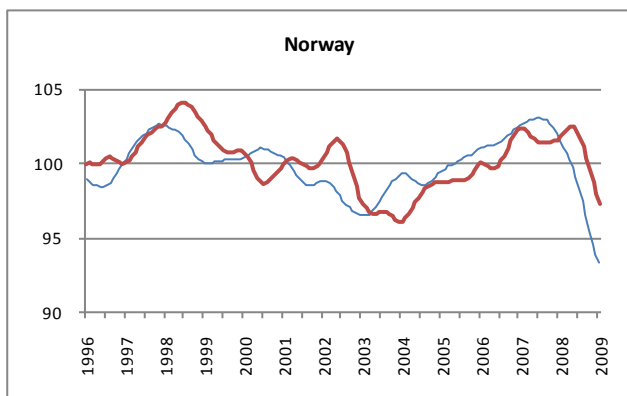
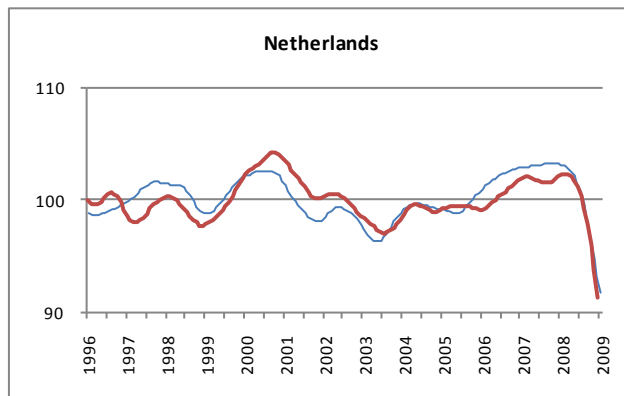
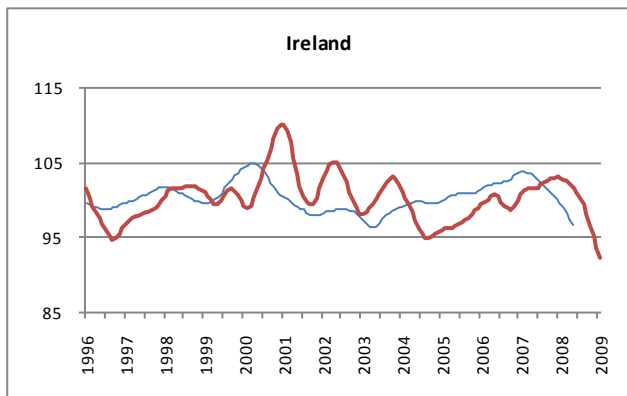
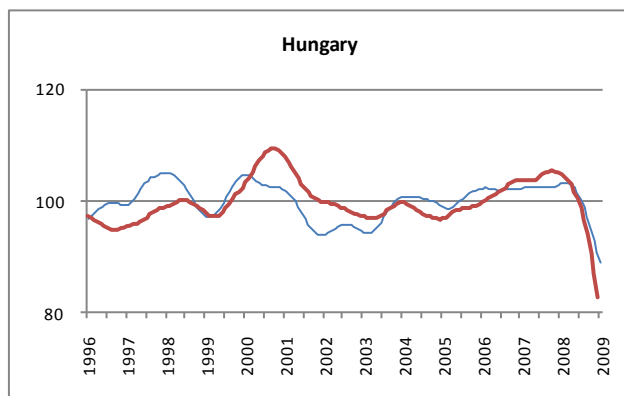
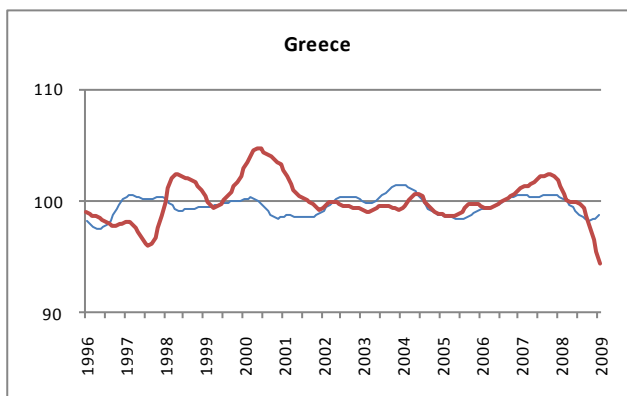
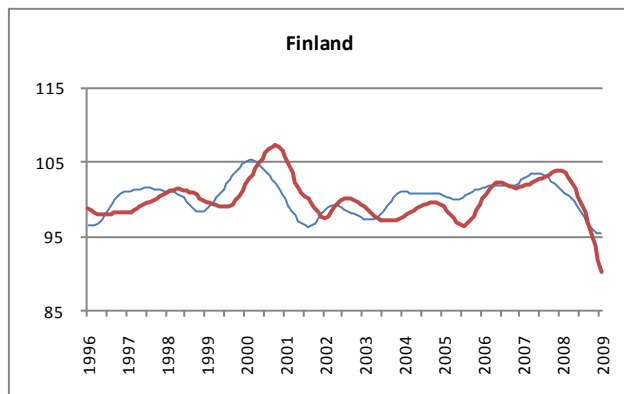
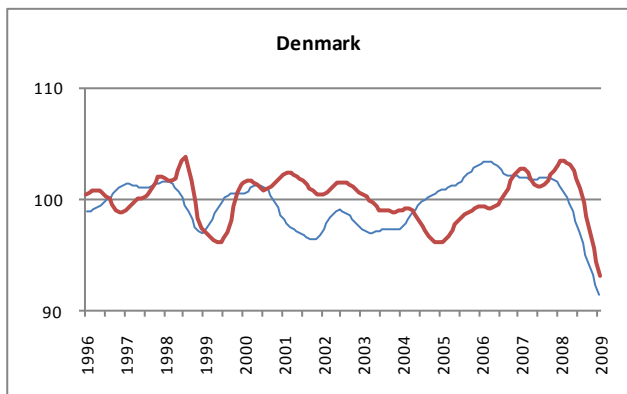
— Reference series — Composite leading indicators



	Mexico	Korea	Australia	New Zealand	Austria	Belgium	Luxembourg	Czech Republic
Amplitude adjusted (long term average =100)								
January 2008	101.18	100.45	101.66	99.82	101.92	102.45	102.71	105.13
February 2008	101.01	100.90	101.38	99.49	101.70	102.39	102.64	104.65
March 2008	100.58	100.87	101.09	99.17	101.46	102.29	102.49	104.10
April 2008	100.27	100.28	100.79	98.91	101.17	102.12	102.22	103.56
May 2008	99.75	99.22	100.46	98.70	100.78	101.83	101.79	102.99
June 2008	99.44	98.00	100.09	98.54	100.25	101.37	101.12	102.24
July 2008	99.10	97.03	99.70	98.35	99.59	100.73	100.21	101.22
August 2008	98.57	96.39	99.27	98.07	98.83	99.87	99.05	99.83
September 2008	97.99	95.51	98.77	97.65	98.00	98.72	97.63	98.09
October 2008	97.49	95.07	98.21	97.19	97.16	97.35	96.04	96.16
November 2008	97.22	94.88	97.61	96.81	96.41	95.86	94.43	94.21
December 2008	97.29	95.04	96.99	96.57	95.81	94.43	92.96	92.37
January 2009	97.50	95.48	96.46		95.36	93.20	91.72	90.73
Change from previous month (point)								
January 2008	0.11	0.78	-0.22	-0.27	-0.23	-0.08	-0.05	-0.32
February 2008	-0.18	0.45	-0.27	-0.33	-0.22	-0.07	-0.07	-0.49
March 2008	-0.42	-0.03	-0.29	-0.32	-0.24	-0.10	-0.15	-0.55
April 2008	-0.32	-0.59	-0.30	-0.26	-0.30	-0.18	-0.27	-0.54
May 2008	-0.52	-1.06	-0.34	-0.21	-0.39	-0.28	-0.43	-0.57
June 2008	-0.31	-1.23	-0.37	-0.16	-0.52	-0.46	-0.67	-0.74
July 2008	-0.34	-0.97	-0.39	-0.18	-0.66	-0.64	-0.91	-1.02
August 2008	-0.53	-0.64	-0.43	-0.28	-0.77	-0.86	-1.16	-1.40
September 2008	-0.58	-0.88	-0.50	-0.42	-0.83	-1.15	-1.43	-1.73
October 2008	-0.50	-0.45	-0.56	-0.46	-0.84	-1.37	-1.59	-1.94
November 2008	-0.27	-0.19	-0.60	-0.37	-0.75	-1.49	-1.61	-1.95
December 2008	0.07	0.16	-0.61	-0.24	-0.60	-1.43	-1.47	-1.83
January 2009	0.20	0.43	-0.54		-0.45	-1.23	-1.24	-1.64
Year on Year change (point)								
January 2008	1.56	-2.61	0.36	-1.57	-1.16	0.25	-0.17	2.85
February 2008	1.76	-2.93	0.00	-1.86	-1.57	0.17	-0.26	1.66
March 2008	1.54	-3.57	-0.37	-2.11	-1.98	-0.04	-0.47	0.40
April 2008	1.25	-4.13	-0.77	-2.24	-2.41	-0.42	-0.86	-0.75
May 2008	0.54	-4.31	-1.21	-2.26	-2.87	-0.95	-1.40	-1.74
June 2008	-0.12	-4.00	-1.68	-2.20	-3.37	-1.59	-2.13	-2.69
July 2008	-0.96	-3.36	-2.19	-2.19	-3.91	-2.30	-3.00	-3.81
August 2008	-2.02	-2.68	-2.72	-2.35	-4.44	-3.12	-4.06	-5.29
September 2008	-2.82	-2.74	-3.29	-2.72	-4.98	-4.17	-5.37	-7.15
October 2008	-3.40	-3.14	-3.87	-3.15	-5.52	-5.41	-6.85	-9.25
November 2008	-3.74	-3.95	-4.42	-3.45	-6.00	-6.77	-8.38	-11.32
December 2008	-3.78	-4.63	-4.89	-3.52	-6.34	-8.11	-9.80	-13.08
January 2009	-3.69	-4.97	-5.20		-6.56	-9.26	-10.99	-14.40

OTHER OECD MEMBER COUNTRIES

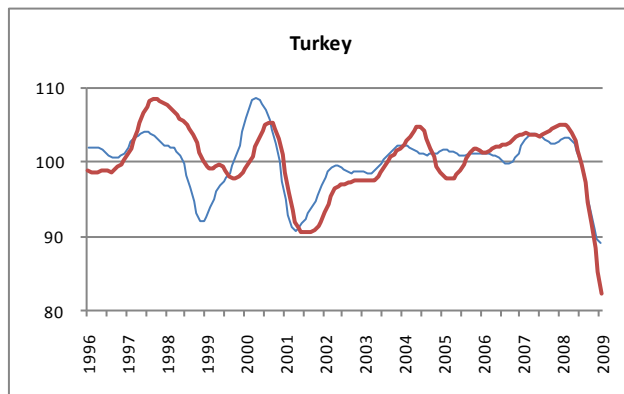
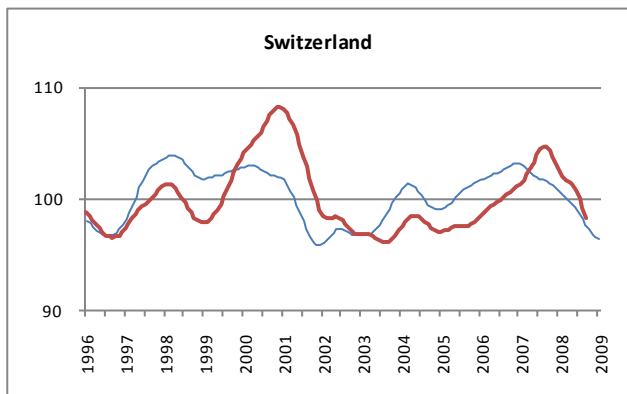
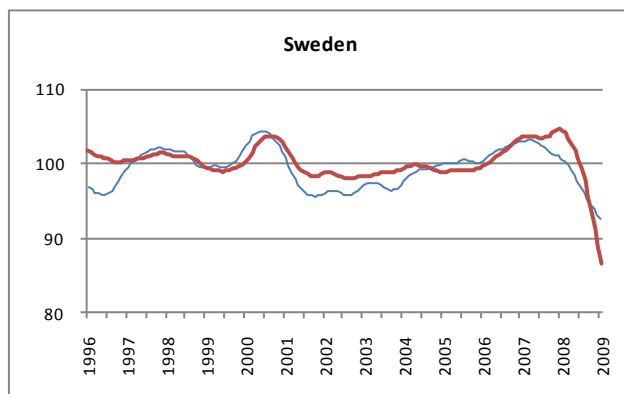
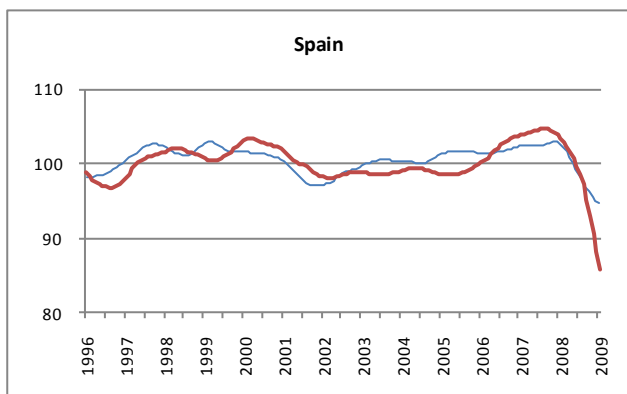
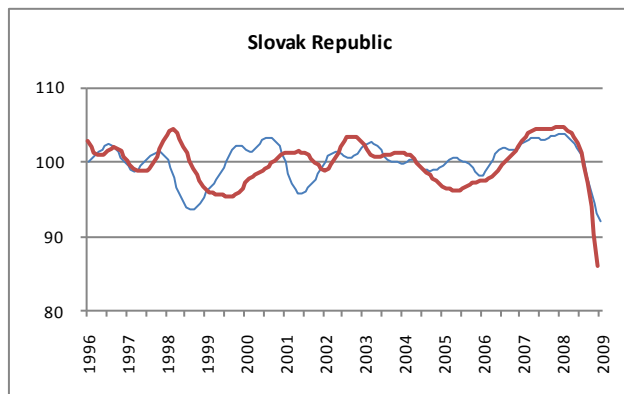
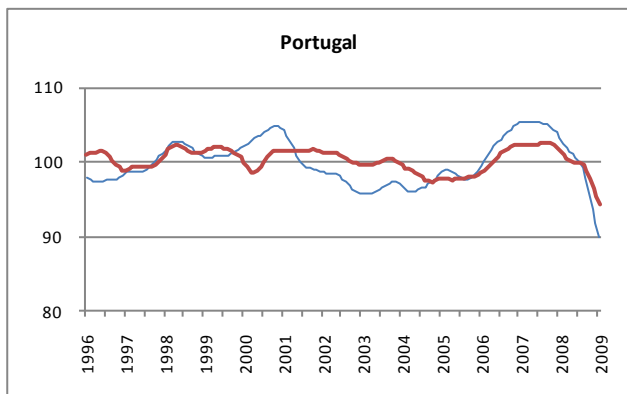
— Reference series — Composite leading indicators



	Denmark	Finland	Greece	Hungary	Ireland	Netherlands	Norway	Poland
Amplitude adjusted (long term average =100)								
January 2008	101.13	101.21	100.33	103.10	99.53	103.25	101.53	99.87
February 2008	100.68	100.89	100.14	103.22	98.87	103.12	101.09	99.21
March 2008	100.16	100.59	99.92	103.17	98.11	102.89	100.65	98.46
April 2008	99.57	100.23	99.66	102.93	97.26	102.58	100.20	97.63
May 2008	98.86	99.75	99.36	102.42	96.40	102.20	99.68	96.73
June 2008	98.01	99.13	99.05	101.55		101.64	99.04	95.82
July 2008	97.05	98.39	98.75	100.35		100.80	98.28	94.95
August 2008	96.05	97.63	98.51	98.87		99.66	97.41	94.19
September 2008	95.05	96.90	98.36	97.13		98.20	96.45	93.63
October 2008	94.08	96.24	98.28	95.14		96.52	95.46	93.35
November 2008	93.15	95.76	98.29	92.98		94.80	94.53	93.37
December 2008	92.28	95.51	98.42	90.83		93.15	93.88	93.66
January 2009	91.46	95.48	98.67	88.97		91.69	93.29	94.18
Change from previous month (point)								
January 2008	-0.36	-0.36	-0.11	0.25	-0.55	-0.07	-0.45	-0.58
February 2008	-0.45	-0.31	-0.19	0.13	-0.66	-0.13	-0.45	-0.66
March 2008	-0.52	-0.30	-0.22	-0.05	-0.76	-0.23	-0.44	-0.75
April 2008	-0.59	-0.36	-0.26	-0.24	-0.86	-0.31	-0.45	-0.82
May 2008	-0.71	-0.48	-0.30	-0.51	-0.85	-0.38	-0.52	-0.91
June 2008	-0.85	-0.63	-0.31	-0.87		-0.56	-0.64	-0.91
July 2008	-0.96	-0.73	-0.30	-1.19		-0.83	-0.76	-0.87
August 2008	-1.00	-0.76	-0.24	-1.49		-1.14	-0.87	-0.76
September 2008	-1.00	-0.74	-0.15	-1.74		-1.47	-0.96	-0.56
October 2008	-0.98	-0.65	-0.08	-1.99		-1.67	-0.99	-0.28
November 2008	-0.93	-0.48	0.01	-2.16		-1.72	-0.93	0.02
December 2008	-0.87	-0.25	0.12	-2.15		-1.65	-0.65	0.29
January 2009	-0.82	-0.03	0.25	-1.86		-1.47	-0.59	0.52
Year on Year change (point)								
January 2008	-0.84	-1.34	-0.24	0.82	-4.12	0.27	-0.93	-5.84
February 2008	-1.23	-1.96	-0.39	0.89	-4.84	0.11	-1.50	-6.48
March 2008	-1.71	-2.53	-0.53	0.78	-5.51	-0.15	-2.08	-6.95
April 2008	-2.23	-3.13	-0.70	0.47	-6.17	-0.51	-2.65	-7.22
May 2008	-2.91	-3.76	-0.97	-0.16	-6.74	-0.96	-3.26	-7.45
June 2008	-3.78	-4.44	-1.31	-1.11		-1.58	-3.99	-7.62
July 2008	-4.78	-5.06	-1.66	-2.29		-2.46	-4.75	-7.80
August 2008	-5.82	-5.57	-1.94	-3.67		-3.64	-5.55	-7.99
September 2008	-6.83	-5.94	-2.13	-5.29		-5.13	-6.39	-8.09
October 2008	-7.77	-6.17	-2.21	-7.27		-6.83	-7.19	-7.97
November 2008	-8.58	-6.21	-2.19	-9.59		-8.55	-7.84	-7.56
December 2008	-9.21	-6.06	-2.02	-12.02		-10.17	-8.11	-6.78
January 2009	-9.66	-5.73	-1.66	-14.13		-11.56	-8.24	-5.69

OTHER OECD MEMBER COUNTRIES

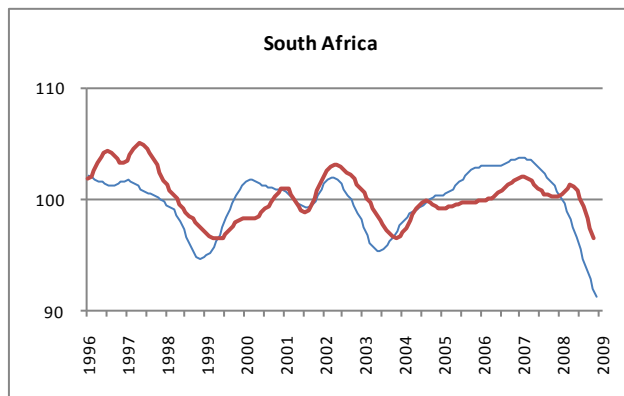
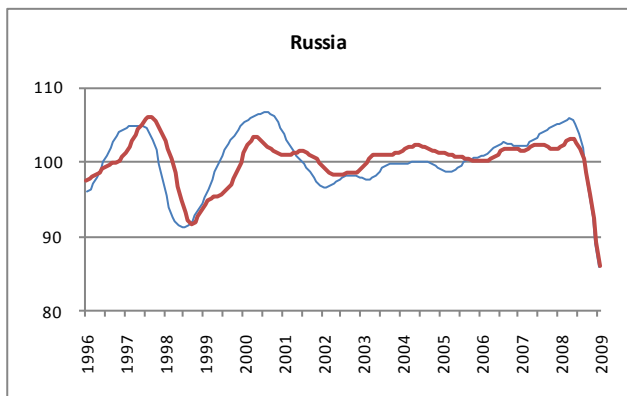
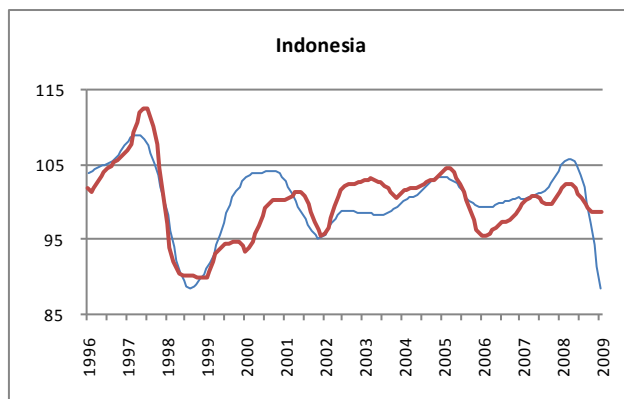
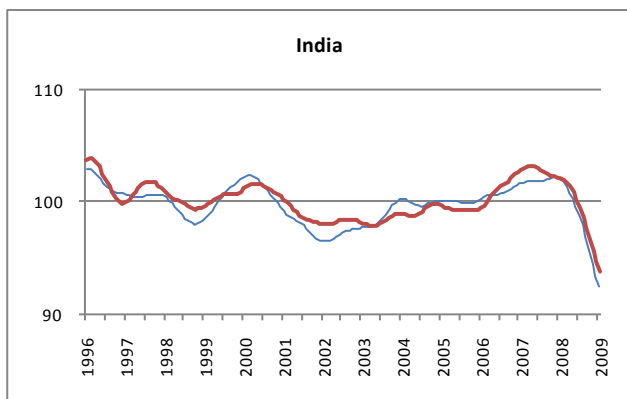
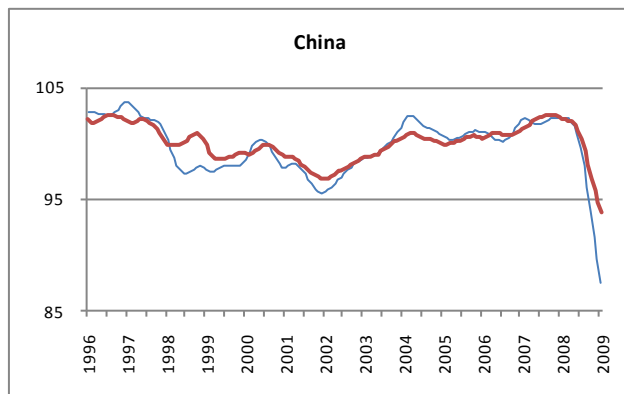
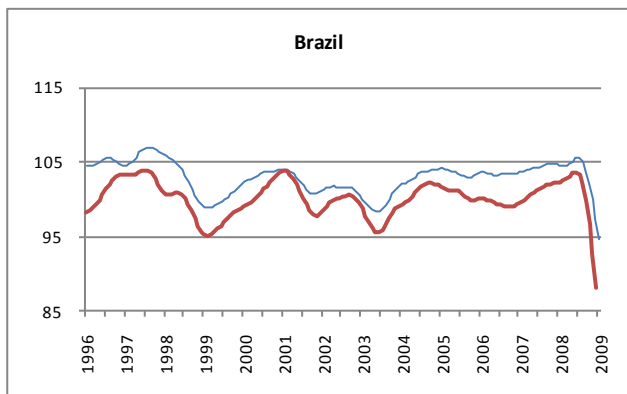
— Reference series — Composite leading indicators



	Portugal	Slovak Republic	Spain	Sweden	Switzerland	Turkey
Amplitude adjusted (long term average =100)						
January 2008	103.34	103.63	102.74	100.68	100.61	103.02
February 2008	102.60	103.51	102.25	100.30	100.31	103.25
March 2008	101.90	103.19	101.58	99.85	99.99	103.26
April 2008	101.39	102.81	100.79	99.24	99.68	103.01
May 2008	101.03	102.36	100.01	98.52	99.46	102.44
June 2008	100.68	101.76	99.26	97.71	99.10	101.52
July 2008	100.17	100.92	98.54	96.87	98.68	100.16
August 2008	99.26	99.69	97.79	96.04	98.19	98.27
September 2008	97.82	98.06	97.00	95.24	97.64	95.91
October 2008	95.88	96.13	96.24	94.50	97.15	93.33
November 2008	93.73	94.30	95.60	93.82	96.75	91.03
December 2008	91.68	92.94	95.10	93.16	96.48	89.66
January 2009	89.84	92.01	94.74	92.49	96.32	89.05
Change from previous month (point)						
January 2008	-0.65	0.06	-0.26	-0.31	-0.28	0.30
February 2008	-0.74	-0.12	-0.50	-0.37	-0.29	0.23
March 2008	-0.69	-0.32	-0.66	-0.45	-0.32	0.01
April 2008	-0.51	-0.38	-0.79	-0.61	-0.31	-0.25
May 2008	-0.36	-0.45	-0.78	-0.72	-0.23	-0.56
June 2008	-0.35	-0.60	-0.75	-0.81	-0.35	-0.92
July 2008	-0.51	-0.84	-0.72	-0.84	-0.42	-1.36
August 2008	-0.90	-1.23	-0.75	-0.83	-0.49	-1.88
September 2008	-1.44	-1.63	-0.79	-0.80	-0.55	-2.36
October 2008	-1.94	-1.93	-0.76	-0.74	-0.49	-2.58
November 2008	-2.15	-1.83	-0.65	-0.68	-0.39	-2.30
December 2008	-2.05	-1.36	-0.50	-0.66	-0.27	-1.36
January 2009	-1.84	-0.93	-0.36	-0.67	-0.16	-0.61
Year on Year change (point)						
January 2008	-2.09	1.35	0.31	-2.28	-2.49	0.88
February 2008	-2.86	0.89	-0.23	-2.74	-2.61	0.29
March 2008	-3.51	0.35	-0.91	-3.26	-2.67	-0.30
April 2008	-3.97	-0.19	-1.66	-3.87	-2.68	-0.85
May 2008	-4.32	-0.70	-2.38	-4.50	-2.65	-1.42
June 2008	-4.68	-1.22	-3.12	-5.07	-2.81	-2.18
July 2008	-5.19	-2.02	-3.88	-5.55	-3.06	-3.29
August 2008	-6.02	-3.22	-4.75	-5.99	-3.43	-4.87
September 2008	-7.29	-5.00	-5.72	-6.46	-3.85	-6.92
October 2008	-8.96	-7.16	-6.66	-6.93	-4.14	-9.27
November 2008	-10.75	-9.16	-7.44	-7.39	-4.37	-11.52
December 2008	-12.31	-10.63	-7.91	-7.83	-4.40	-13.06
January 2009	-13.50	-11.62	-8.00	-8.19	-4.28	-13.97

MAJOR NON OECD MEMBER COUNTRIES

— Reference series — Composite leading indicators



	Brazil	China	India	Indonesia	Russia	South Africa
Amplitude adjusted (long term average =100)						
January 2008	104.65	102.26	102.03	104.69	105.23	100.23
February 2008	104.49	102.25	101.78	105.27	105.47	99.64
March 2008	104.48	102.20	101.38	105.61	105.71	98.99
April 2008	104.75	101.99	100.87	105.67	105.83	98.26
May 2008	105.19	101.54	100.26	105.42	105.67	97.43
June 2008	105.53	100.79	99.58	104.76	105.06	96.54
July 2008	105.54	99.62	98.80	103.61	103.82	95.63
August 2008	105.05	98.02	97.88	101.91	101.86	94.69
September 2008	103.92	96.04	96.81	99.66	99.14	93.78
October 2008	102.14	93.82	95.61	96.98	95.89	92.88
November 2008	99.83	91.60	94.43	94.12	92.46	92.01
December 2008	97.20	89.52	93.38	91.25	89.16	91.27
January 2009	94.51	87.45	92.42	88.25	85.87	
Change from previous month (point)						
January 2008	-0.16	-0.03	-0.11	0.74	0.23	-0.54
February 2008	-0.16	-0.01	-0.25	0.58	0.24	-0.59
March 2008	0.00	-0.05	-0.39	0.34	0.24	-0.65
April 2008	0.27	-0.21	-0.52	0.06	0.12	-0.73
May 2008	0.43	-0.44	-0.60	-0.25	-0.15	-0.83
June 2008	0.34	-0.76	-0.68	-0.66	-0.61	-0.88
July 2008	0.01	-1.16	-0.78	-1.16	-1.24	-0.92
August 2008	-0.50	-1.61	-0.93	-1.70	-1.96	-0.94
September 2008	-1.13	-1.98	-1.07	-2.25	-2.71	-0.91
October 2008	-1.78	-2.22	-1.20	-2.68	-3.25	-0.89
November 2008	-2.31	-2.22	-1.18	-2.86	-3.44	-0.87
December 2008	-2.63	-2.08	-1.04	-2.88	-3.29	-0.75
January 2009	-2.70	-2.07	-0.96	-3.00	-3.30	
Year on Year change (point)						
January 2008	1.04	0.10	0.41	4.29	3.16	-3.53
February 2008	0.74	-0.01	0.06	4.86	3.34	-4.09
March 2008	0.56	0.06	-0.42	5.12	3.39	-4.65
April 2008	0.68	0.04	-1.01	5.03	3.21	-5.23
May 2008	1.00	-0.25	-1.64	4.61	2.68	-5.85
June 2008	1.24	-0.94	-2.32	3.78	1.68	-6.46
July 2008	1.14	-2.17	-3.08	2.41	0.07	-7.07
August 2008	0.47	-3.95	-4.02	0.43	-2.21	-7.69
September 2008	-0.84	-6.15	-5.16	-2.24	-5.19	-8.28
October 2008	-2.76	-8.52	-6.46	-5.51	-8.69	-8.81
November 2008	-5.07	-10.76	-7.72	-9.08	-12.34	-9.25
December 2008	-7.61	-12.77	-8.75	-12.71	-15.84	-9.50
January 2009	-10.14	-14.81	-9.61	-16.45	-19.36	