

2011 OECD REPORT ON AID PREDICTABILITY: SURVEY ON DONORS' FORWARD SPENDING PLANS 2011 - 2013



This document presents the results of the 2011 Survey on Donors' Forward Spending Plans 2011 - 2013.

Contact:

Fredrik Ericsson, tel +33 (0) 1 45 24 19 65 fredrik.ericsson@oecd.org

Suzanne Steensen, tel +33 (0) 1 45 24 76 23 suzanne.steensen@oecd.org

Hanna-Mari Kilpelainen, tel. +33 (0) 1 45 24 76 23 hanna-mari.kilpelainen@oecd.org

TABLE OF CONTENTS

SURVEY RESULTS: KEY MESSAGES.....	5
INTRODUCTION.....	7
2011 SURVEY RESULTS.....	9
Significant slow-down in growth of global aid.....	9
Focus shift from Africa back to Asia.....	10
Population growth expected to outpace growth in aid volumes to low-income countries.....	11
Lower aid levels are linked to phase out decisions.....	12
Aid dependency is expected to decrease.....	13
Large variations in the share of aid allocated to priority partner countries.....	15
SURVEY DATA PROVIDE RELIABLE ESTIMATES OF FUTURE AID FLOWS	17
INITIATIVES TO ENHANCE THE USE OF THE SURVEY	18
Survey data proven useful for partner countries	18
Collecting more disaggregated forward-looking data is feasible.....	20
Key recommendations to further enhance the Survey	21
ANNEXES:	23
Annex 1: Survey methodology and coverage	23
Annex 2: Country Programmable Aid	27
Annex 3: CPA by region and income group.....	29
Annex 4: Predictability ratio.....	30
Annex 5: Country Programmable Aid 2010-2013.....	34
TABLES	
Table 1. CPA change 2010-2013.....	11
Table 2. Impact of planned aid exits on number of DAC donors and CPA	13
Table 3. Predictability ratio.....	17
Table 4. CPA compared with recorded disbursements in Rwanda (2006-2009).....	19
FIGURES	
Figure 1. CPA 2005-2013: actual (2005-2010) and programmed (2011-2013)	9
Figure 2. Percent annual change in country programmable aid (CPA)	10
Figure 3. CPA by region	11
Figure 4. CPA by income group	12
Figure 5. Share of countries with projected decrease in CPA (2010-2013).....	13
Figure 6. CPA share of GNI (2010, in %)	14
Figure 7. CPA share of GNI by region (in %)	15
Figure 8. Share of CPA allocated to priority partner countries (2010).....	16

SURVEY RESULTS: KEY MESSAGES

- The 2011 Survey on donors' forward spending plans is the fourth survey in this annual series, and provides an indication of the collective forward programming of bilateral and multilateral donors up to and including 2013, only two years before the MDG milestone year of 2015. The Survey traces country programmable aid (CPA), a core subset of gross bilateral ODA and multilateral outflows essential for the support of the MDGs.
- Total CPA in 2010 is estimated at USD 91.6 USD billion, representing a decline of USD 1.3 billion in real terms since the peak reached in 2009. This drop is mostly explained by the end of a sequence of extraordinary disbursements by multilateral agencies to help countries mitigate the impact of the 2008-2009 global crisis. Looking forward, CPA is programmed to grow at a real rate of 2% per year through 2013, compared to an average of 8% per year over the previous three years. This modest rate of increase is mostly driven by outflows from multilateral agencies. Aid per capita is expected to decline, as population increases match or outpace this rise.
- The projected slow-down in CPA growth is likely to be more severe for Africa, where CPA is projected to increase at about 1% per year in real terms compared to 12% per year over the past three years. The majority of countries in all regions are projected to receive lower aid levels by 2013, reversing the patterns from previous surveys. This may partly be linked to recent decisions by donors to concentrate their aid on fewer partner countries. A few large countries receiving significant increases offset these reductions. For most countries, aid dependency (measured as the CPA share of GNI) is also expected to fall, since income growth in developing countries is expected to outperform the increase in aid.
- Donors' medium-term aid predictability, as measured by the ratio of delivered to programmed CPA, indicates an over-programming of 5% in 2010. This means that the average donor disbursed 5% less in 2010 than what they had programmed in the beginning of the same year. This stands in contrast to last year's survey report, which showed an under-programming of 3% for 2009 flows, and is most likely due to the altered fiscal situation in many donor agencies during 2010. If this cautious trend continues or is reinforced in 2011-2013, total aid disbursements will fall rather than rise slightly as current intentions predict.
- A pilot study to disclose the disaggregated survey data to partner countries confirmed the potential of this Survey to improve aid predictability with very little additional costs. This study concludes that removing the confidentiality requirement around the Survey data would not only support country-level dialogue on accuracy and comprehensiveness of donors' forward spending plans, but also contribute to advance donors' Accra Agenda for Action (AAA) commitments. In addition to enhancing transparency and predictability globally and at the country level, disclosure of donors' forward spending plans could contribute to better coordination and division of labour between donors.

- Another pilot with Austria and Belgium explored how donors could provide more detailed information on ongoing and planned aid projects and programmes by reporting their forward spending plans directly in the format of the OECD Creditor Reporting System. This confirmed that strengthening the detail and comprehensiveness of this Survey is possible, and at the same time it also revealed that there are structural limitations in donor agencies' medium and long-term planning.
- A key step forward would be to remove the disclosure policy to enable information collected in the survey to be widely distributed to all stakeholders. This would not only benefit partner countries with more information on individual donors' future intentions, but could also contribute to improved coordination between donors, both at country level and in donor headquarters when making aid allocation decisions.

INTRODUCTION

1. The lack of aid transparency and predictability on future aid flows has repeatedly been identified as a key bottleneck to more effective aid, and will feature prominently in the HLF4 discussions and in post-Busan aid effectiveness efforts. In recent years, several donors, organisations and initiatives have developed interactive tools to present information on aid data more transparently. The DAC Survey on Forward Spending Plans **is the only regular process that brings together most bilateral and multilateral aid spending plans up to 3 years ahead at the global level.**

2. The need for a better understanding of donors' aid allocation policies originates from the Gleneagles and G8 commitments on scaling up aid and discussions on how to secure the increases in aid agencies' budgets. Subsequently at the DAC High level meeting in April 2006, members agreed to conduct a survey on their multi-year budgeting and to collect indicative information on future aid flows.

3. The DAC Workshop on Scaling Up for Results and Aid Allocations in February 2007 discussed the need to define the portion of aid to be collected in the survey, and decided to use Country Programmable Aid (CPA), the part of aid that is programmable to individual countries. At the workshop, it was also acknowledged that the survey would help inform manage aid both collectively and individually to address the issues of predictability and division of labour.¹

4. The workshop and the subsequent DAC Senior Level Meeting (SLM) in December 2007 concluded that the Survey not only provided useful operational information to donor agencies when planning future aid allocations, but could also be useful for discussions on aid allocations and division of labour at the country level.² Despite the Paris Declaration's emphasis on information sharing, the SLM nevertheless concluded that members were only prepared to share the aggregate (*i.e.* non-donor-specific country totals) results of the survey with partner countries.³ **The fact that donor-specific indicative forward spending plans remain undisclosed to partner countries represents a key constraint to making full use of the survey information** to enable recipient countries to improve their own planning and promote bilateral discussions on aid allocation and division of labour. A 2011 pilot study to share the disaggregated information with partner countries confirmed that regular access to survey information was important to support country-level dialogue on future aid.⁴

5. This 2011 survey is the fourth annual survey. It provides an indication of the collective forward programming of bilateral and major multilateral donors up to and including 2013, only two years before the MDG milestone year of 2015⁵. The current edition also presents the results of two pilot initiatives undertaken in 2011 to further enhance the usefulness of the survey. At the sixth DAC Technical Meeting for Aid Financing and Allocations Specialists in June 2010 it was agreed that the Secretariat could share donor specific data collected through the survey with two partner countries and the IMF on a pilot basis to determine whether dissemination of this information at the country level would support enhanced transparency, predictability and accountability. Participants also agreed to pilot the reporting of future aid

1. DCD/M(2007)1/FINAL

2. The importance of aid predictability and regular access of donors' rolling indicative three-year planning figures was reaffirmed in the Accra Agenda for Action and in the "beginning now" commitments.

3. DCD/DAC(2007)/57/REV1

4. See the chapter *Initiatives to enhance the use of the survey*

5. This year's survey aimed to collect forward spending plans up to 2015, however only a third of all donors were capable of providing indicative spending plans five years ahead.

plans in CRS++ format to allow for more detailed information and better serve partner countries' information needs.

6. The methodology for the 2011 Survey is the same as in previous surveys. It traces CPA, a core subset of bilateral ODA and multilateral outflows critical for delivering international aid commitments in support of the MDGs. The report distinguishes between DAC countries and multilateral agencies. It is important to note that the European Union is unique among DAC members in that it plays a dual role in development assistance: The EU is a member of the DAC and has its own development policy but at the same time contributions to the EU are considered multilateral ODA. Keeping in mind this duality, the EU is presented in this report as a multilateral agency in line with other DAC publications.⁶

7. CPA tracks the programmable part of aid to partner countries and represents aid over which recipient countries have, or could have significant say.⁷ As presented in the final section of this report, CPA also provides a good approximation of the overall flows expected to appear in country aid information systems. Over the past 5 years CPA has corresponded to about 51% of DAC countries' gross bilateral ODA.

8. The 2011 Survey was conducted between December 2010 and February 2011 and covered all DAC members as well as the largest 23 multilateral agencies, including multilateral development banks, UN agencies and global funds. Overall, the 47 donor countries and multilateral agencies in the survey were able to provide forward information for 63% of their total CPA.⁸ The survey results were used to inform discussions at the DAC SLM in April 2011 on the expected future trend of members' and major multilateral agencies' aid up to and including 2013.

9. The first section of this report presents the overall survey results and how these differ from last year's survey. It also presents detailed information on where aid is likely to be allocated and which country groupings are expected to see major changes in aid volumes. Section two presents the predictability ratio for 2010 aid flows as measured by the extent to which donors' programming 1-3 years ahead matched the actual aid delivered. This indicator is a proxy for donors' predictability at aggregate and global level. The third and final section presents the results of the two pilot initiatives conducted in 2011 to illustrate the relevance of further developing the accessibility and comprehensiveness of the survey.

6. See Annex 1 for further details on survey methodology and assumptions.

7. See Annex 2 for further details on CPA.

8. This is the same coverage as in 2010 Survey on Donors' Forward Spending Plans. Annex 1 presents the coverage for all donors in the survey.

2011 SURVEY RESULTS

10. Total CPA in 2010 collected in the survey is provisionally estimated at USD 91.6 billion, USD 1.3 billion less in real terms than in 2009. This reduced level in CPA stands in contrast to the extraordinary counter-cyclical disbursements by multilateral agencies to help countries mitigate the impact of the financial crisis in 2009. For DAC countries as a group, however, CPA increased slightly from USD 55.8 billion in 2009 to USD 57.6 billion in 2010.

Significant slow-down in growth of global aid

11. Looking beyond 2010, the Survey findings indicate that the significant growth in CPA of recent years is decelerating dramatically. Global CPA is programmed to grow at a real rate of 2% per year from 2010 to 2013, in contrast to 8% per year over the previous three years. Per capita aid receipts will therefore be flat or decreasing over this period, if these plans fully materialise.

12. The remaining growth is mostly driven by planned outflows from multilateral agencies. Of the total increase of nearly USD 6 billion between 2010 and 2013, increased outflows from multilateral agencies represent USD 3.5 billion, or 60% of the total increase in CPA. CPA up to and including 2013 is expected to grow at a real rate of 3.4% per year for multilateral agencies and 1.3% per year for DAC countries. Figure 1 illustrates the trend in CPA from 2005 to 2013 broken down by type of agency, and Figure 2 presents the percent annual change in real CPA over the same period.

Figure 1. CPA 2005-2013: actual (2005-2010) and programmed (2011-2013)

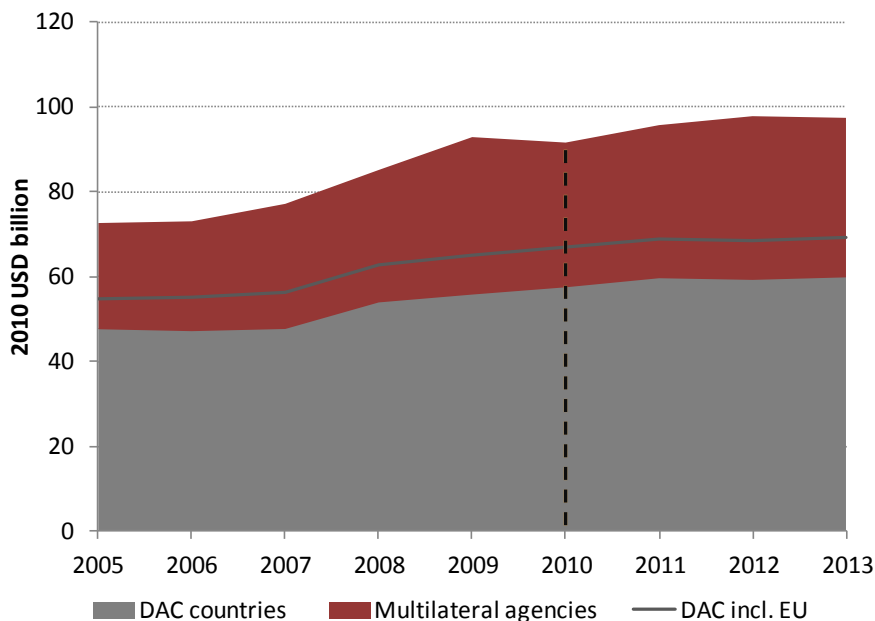
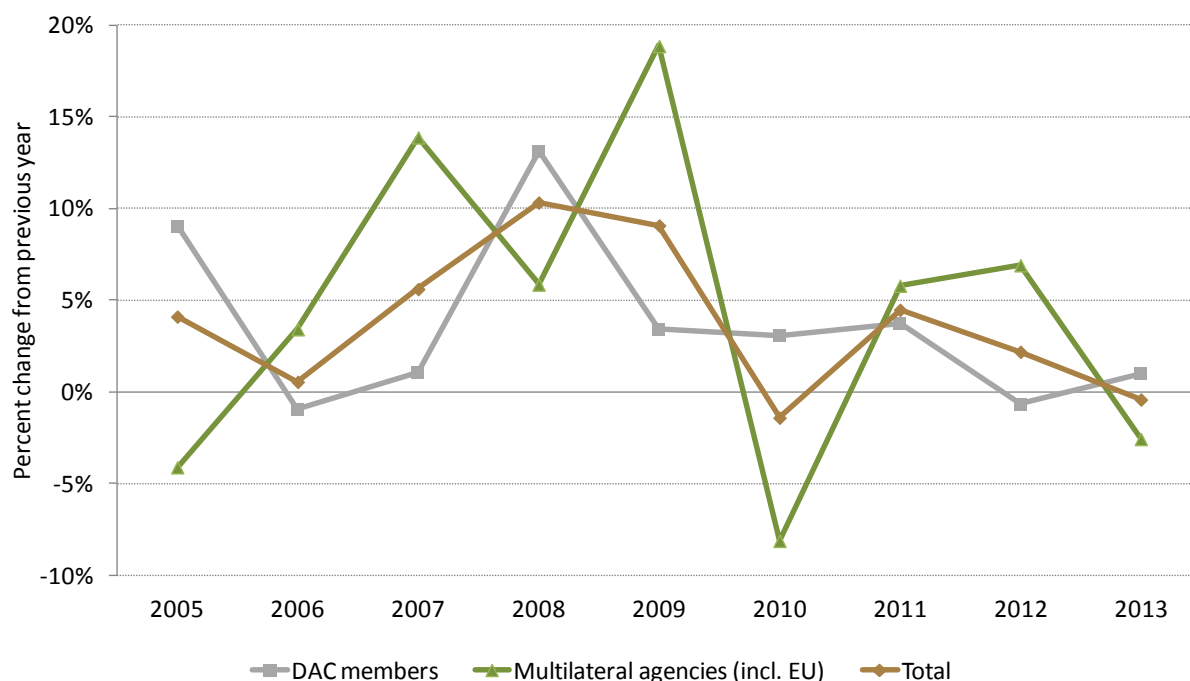


Figure 2. Percent annual change in country programmable aid (CPA)



13. This survey also collected estimates of future core funding to multilateral agencies. Similar to last year's survey, the result shows no large changes in real terms for the next three years. Half of the donors providing estimates up to and including 2013 are expected to reduce their multilateral aid in the coming years, while the other half have programmed increased funding to the multilateral system.

14. Although core funding to multilateral agencies has not increased and there is no indication of future increases, multilateral outflows have increased in recent years. This is due to the ability of some of these agencies to mobilise their own resources. Multilateral agencies' share of global CPA peaked in 2009, when 40% of CPA disbursements came from multilateral sources. This was an increase from 37% in 2008, and reflects the increase in concessional financing from the IMF and the regional development banks to mitigate the impact of the financial crisis. The IMF and African Development Bank, for example, nearly doubled their combined concessional flows from USD 2.8 billion in 2008 to USD 5.2 billion in 2009.

Focus shift from Africa back to Asia

15. Last year's report indicated that 2010 would be the first year Africa received a higher volume of CPA than Asia. This turned out to be true, as the preliminary estimates for 2010 indicate that CPA to Africa was USD 38.0 billion, while CPA to Asia decreased from USD 39.6 billion to USD 37.4 billion due to lower aid to several large aid recipients such as Iraq, China and Vietnam. This appears to be a one-time shift as the level of CPA to Asia is expected to recover and surpass Africa once more as the largest aid-receiving continent in 2011. This is mainly due to planned increases in multilateral outflows. CPA to Asia is projected to increase by 3% in real terms, and is the region where the top four absolute increases in aid volume (Bangladesh, India, Vietnam and Pakistan) are expected.

16. CPA to Africa is projected to increase at 1% per year in real terms, compared to a 12% annual growth rate over the past three years. This modest increase in CPA volume is expected to be outpaced by population growth, resulting in a reduction in CPA per capita from USD 37.0 in 2010 to USD 35.5 in 2013. Aid recipients in Europe and America are also expected to receive less aid in 2013 than in 2010; however, this is more likely linked to phase-out decisions by donors rather than due to population increases. Figure 3

illustrates regional distribution of CPA in 2005, 2010 and 2013. Table 1 shows the countries with the largest planned increases and decreases in absolute CPA volume up to and including 2013.

Figure 3. CPA by region

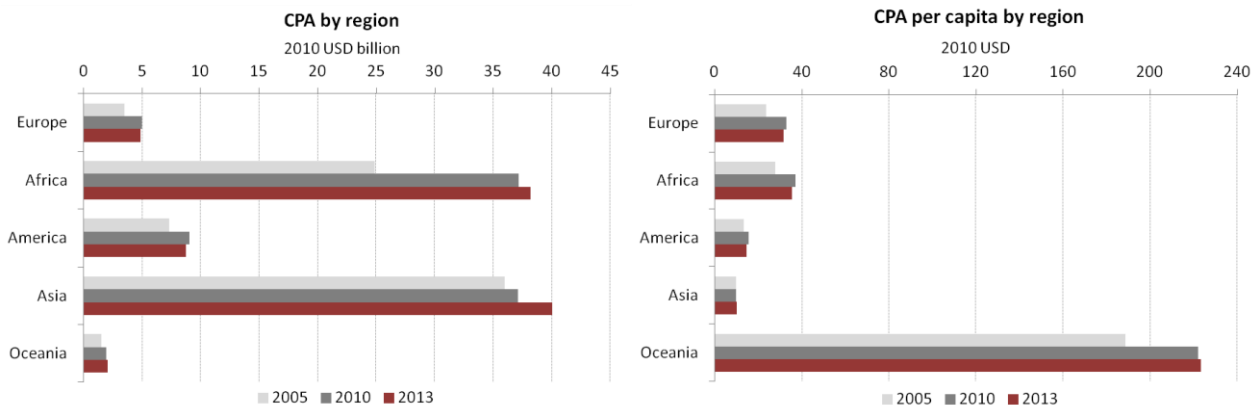


Table 1. CPA change 2010-2013

Largest 10 increases	Region	Income group	Change in CPA (USD million)
Bangladesh	Asia	LIC	+798
India	Asia	LMIC	+629
Viet Nam	Asia	LIC	+502
Pakistan	Asia	LMIC	+429
Kenya	Africa	LIC	+396
Ethiopia	Africa	LIC	+176
Zambia	Africa	LIC	+176
Uzbekistan	Asia	LMIC	+157
Congo, Dem. Rep.	Africa	LIC	+153
Egypt	Africa	LMIC	+143

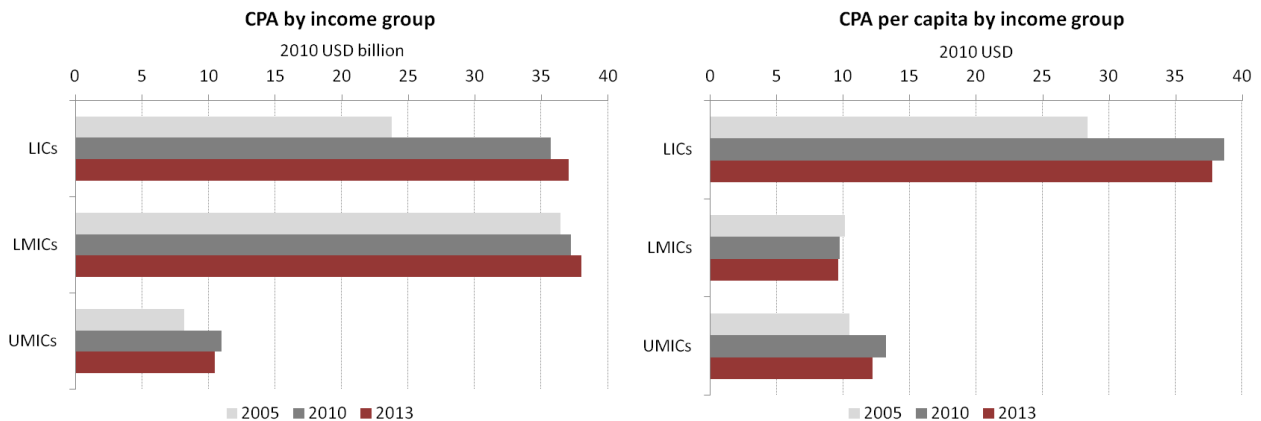
Largest 10 decreases	Region	Income group	Change in CPA (USD million)
Afghanistan	Asia	LIC	-212
Rwanda	Africa	LIC	-187
Brazil	America	UMIC	-175
Haiti	America	LIC	-175
Indonesia	Asia	LMIC	-174
Cote d'Ivoire	Africa	LMIC	-154
Tanzania	Africa	LIC	-148
Bosnia-Herzegovina	Europe	UMIC	-127
Burundi	Africa	LIC	-123
Iraq	Asia	LMIC	-98

Population growth expected to outpace growth in aid volumes to low-income countries

17. The large increases in aid to the world’s poorest countries in recent years are expected to slow down. For low-income countries, the real annual growth rate is expected to be at 1% up to and including 2013 compared to a 14% annual growth for the past three years. With an expected annual population growth rate of 2% per year, CPA per capita in an “average” low-income country is expected to decrease from USD 39 to USD 38 between 2010 and 2013.

18. The projected slow-down in aid growth also applies to middle-income countries (MICs). Despite the fact that India and Pakistan are projected to receive USD 1 billion in additional aid in 2013 compared to 2010, aid to lower-middle income countries (LMICs) is projected to increase by only 1% compared to 3 % in the previous three years. CPA to upper-middle income countries (UMICs) is projected to decline at a real rate of 1% per year. Aid to China is expected to remain at USD 2.1 billion annually, of which 90% originates from bilateral sources. In per capita terms, aid to both LMICs and UMICs is expected to fall due to higher population growth projections than the projected growth in aid.

Figure 4. CPA by income group



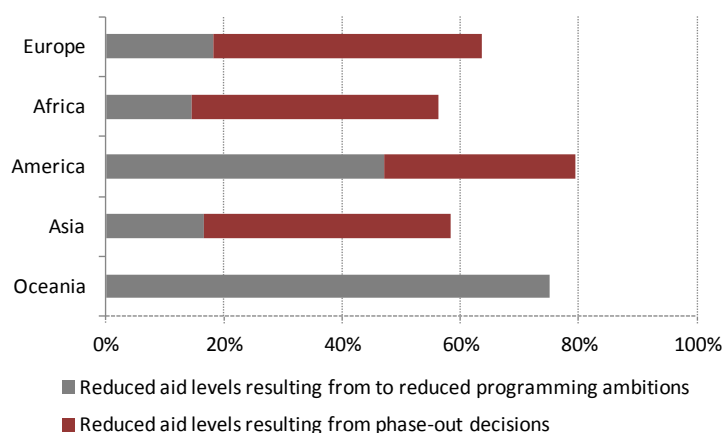
Lower aid levels are linked to phase out decisions

19. In recent years, the OECD has analysed aid fragmentation to prompt donors to examine their own aid portfolio, with the ultimate goal of reducing transaction costs for countries with little capacity to manage many small donor relations and at the same time achieving a better cross-country division of labour. With stretched aid budgets and the increasing focus on development results in recent years, many DAC EU countries have taken decisions to rationalise their aid portfolio by concentrating aid on fewer partner countries.

20. The 2011 Survey collected information on planned donor exits in future years. Acknowledging that phasing out of a partner country is a long process usually marked by a gradual decline in aid volume, the potential impact of these decisions was simulated using 2009 CPA levels. From a partner country perspective, it is generally not the largest donors in terms of aid volume that are planning to phase out. However, it is worth noting that while a given donor may not provide large aid volumes in terms of aggregate aid to a country, it may nevertheless represent a significant proportion of aid directed to a certain sector or area with only a few donors present. Therefore, phase-outs of such aid programmes can have a significant impact at country level.

21. Nearly 80% of all countries in the Americas are projected to receive lower levels of aid in 2013 than in 2010, and 40% of these are linked to phase-out decisions. Figure 5 presents the share of countries with a projected decrease in CPA up to and including 2013, as well as the share of countries that can expect at least one donor exit in the next few years.

Figure 5. Share of countries with projected decrease in CPA (2010-2013)



22. In total, 162 aid relations between DAC EU members and partner countries are expected to be phased out over the next few years, represented 8% of DAC EU global CPA in 2009.⁹ Partner countries in Europe are the most affected, with 25% of all DAC EU aid relations to be phased out. Many of the countries in Europe are upper-middle income countries and some are already negotiating future membership in the European Union. The 2009 CPA volume corresponding to these aid relations represented 16% of DAC EU aid to Europe. Similarly, nearly 17% of all DAC EU aid relations in Africa are expected to be phased out in the next few years, corresponding to 6% of all DAC EU aid going to Africa in 2009. Table 2 presents the results of this analysis.

Table 2. Impact of planned aid exits on number of DAC donors and CPA

	Average number of DAC countries per partner country	Average number of DAC EU countries per partner country	Average number of DAC EU exits per partner country	Total CPA provided by DAC countries	Total CPA provided by DAC EU countries	Total CPA of DAC EU exits
Europe	14.7	9.4	2.4	2,586	1,332	208
Africa	12.0	7.3	1.2	17,673	10,068	581
America	8.3	4.8	0.7	5,012	2,209	358
Asia	14.4	8.6	1.3	24,670	6,928	605
Oceania	3.5	1.4	-	1,156	128	-
Global	11.0	6.6	1.1	51,097	20,665	1,752

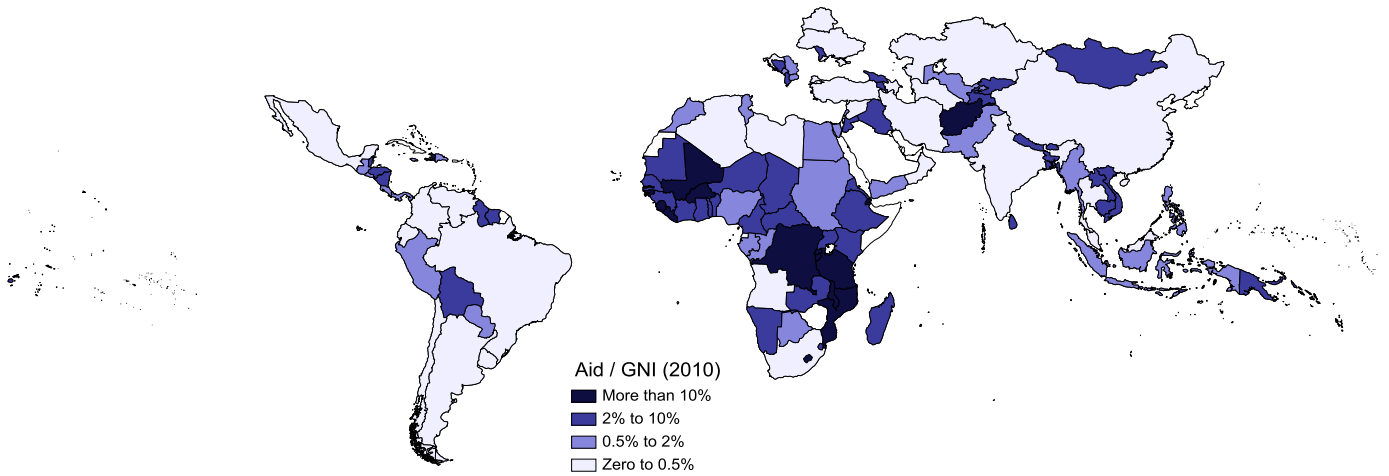
Aid dependency is expected to decrease

23. Aid dependency, measured as the share of aid to national income, *i.e.* CPA over GNI, varies greatly between regions and countries. In Africa, CPA represented on average 2.4% of GNI in 2010, but in six African countries it was more than 20%.¹⁰ In other regions, only Afghanistan and a few island states in Oceania had such a high share of CPA to GNI. In total, 23 countries have a CPA to GNI ratio of over 10%, of which 16 are in Africa. Globally, CPA represented 0.6% of partner countries' GNI in 2010. Figure 6 presents the CPA share of GNI in 2010.

9. An aid relation is defined as the sum of all aid activities by a donor or a multilateral agency in a country.

10. These countries are Burundi, Cape Verde, Liberia, Malawi, Rwanda and Sao Tome and Principe.

Figure 6. CPA share of GNI (2010, in %) ¹¹



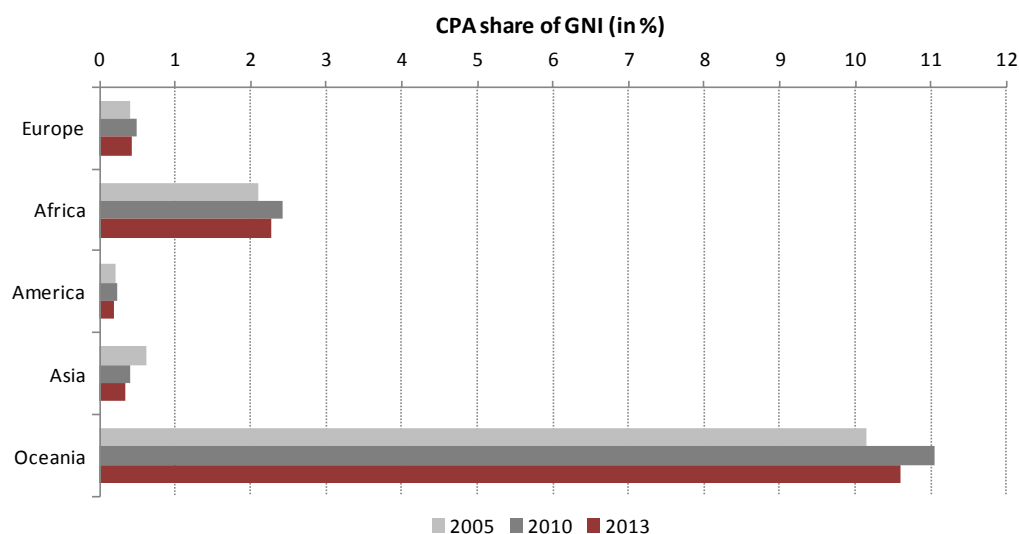
24. Since 2005, large increases in CPA have outperformed growth in GNI, leading to a higher CPA to GNI ratio in 53% of all countries. In Africa, the CPA to GNI ratio increased in 32 of 51 countries since 2005. Recent scaling up of aid to Africa has increased the continent’s CPA to GNI ratio from 2.1% in 2005 to 2.4% in 2010; however, this is expected to fall to 2.3% in 2013.¹² Asia has experienced an opposite trend in aid dependency in recent years. Despite increasing levels of CPA since 2005, the region’s recent years’ high GNI growth rates have led to a decrease in CPA/GNI of one-third, from 0.6% to 0.4%. The projected increase in CPA to Asia over the next few years is not likely to change this trend. Despite the projected real annual increase in CPA of 3% per year, GNI in this region is projected to increase even more, leading to a further decrease in CPA/GNI to 0.3% by 2013. The same trends are observed when excluding China.¹³ Figure 7 shows CPA as a share of GNI by region.

11 . These maps are for illustrative purposes and are without prejudice to the status of or sovereignty over any territory covered by these maps.

12 . The aid dependency ratio for countries south of Sahara excluding South Africa increased from 4.1% in 2005 to 4.6% in 2010

13 . When excluding China, CPA as a share of GNI for Asia decreased from 1.1% in 2005 to 0.9% in 2010 and is projected to further decrease to 0.8% by 2013.

Figure 7. CPA share of GNI by region (in %)



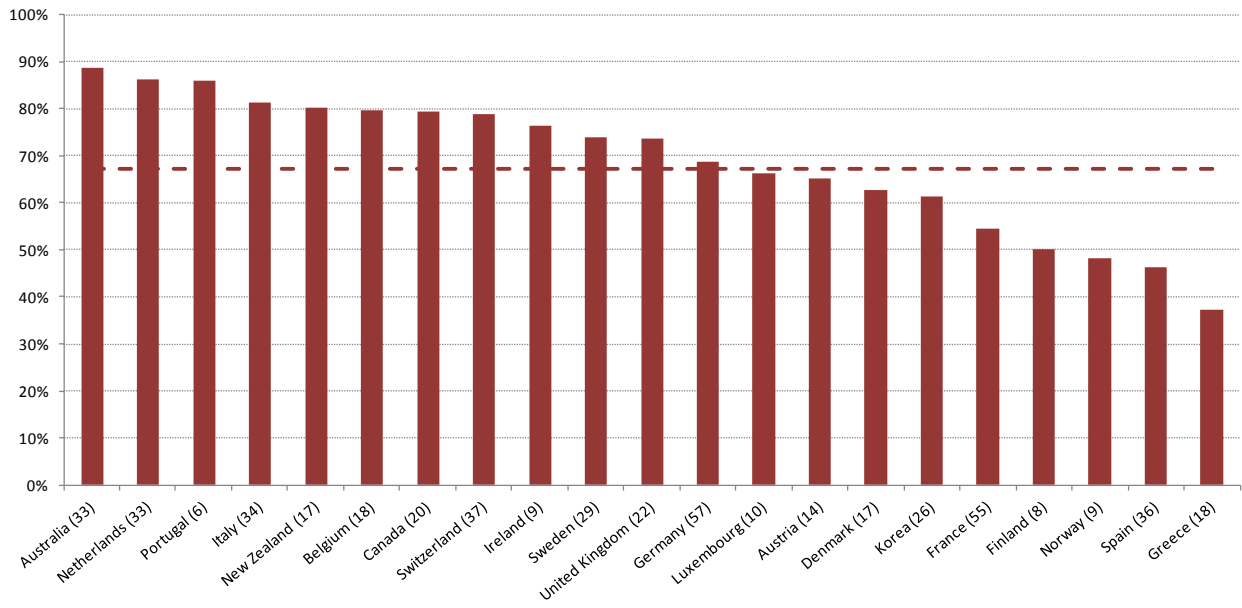
25. While this year’s Survey reveals slower growth levels of CPA in the next few years, many partner countries are still experiencing high economic growth, with little indications of a significant slow-down. In the next few years, the CPA to GNI ratio is therefore expected to decrease in most countries. At the global level, only 19 countries are expected to see an increase in the CPA to GNI ratios from 2010 to 2013.

Large variations in the share of aid allocated to priority partner countries

26. The survey also collects information on DAC countries’ priority partner countries,¹⁴ or countries where the donor has a long-term engagement strategy in place. Countries are designated as “priority countries” by donors reporting to the Survey. The number of priority partner countries range from a low of 6 (Portugal) to a high of 57 (Germany). The dotted line in Figure 8 represents the average share of CPA provided to priority partner countries for DAC donors using this concept. In 2010, this was 67%, with large variations across donors. For example, Australia’s 33 priority partner countries received nearly 90% of all Australian CPA, while Spain and Greece disbursed less than half of their CPA to their 36 and 18 priority countries respectively. Because several DAC donors are concentrating aid on fewer partner countries and because of the differences in donor coverage to the survey, it is not feasible to estimate the share of aid allocated to priority countries in future years. Figure 8 shows the share of CPA allocated to priority partner countries in 2010. The number of priority countries is indicated in the parentheses.

14. Note that Japan and the United States do not define priority partner countries, and that the list for Norway represents the top 9 countries in terms of aid funds received.

Figure 8. Share of CPA allocated to priority partner countries (2010)



SURVEY DATA PROVIDE RELIABLE ESTIMATES OF FUTURE AID FLOWS

27. The Survey on Donors' Forward Spending Plans offers a unique opportunity to study the predictability and reliability of donors' aid allocation decisions over time. The *2010 OECD Report on Aid Predictability* introduced an indicator to measure medium-term predictability on the basis of forward-looking CPA plans collected through the survey. The predictability ratio is calculated by comparing the actual CPA disbursed in a specific year to programmed CPA estimates for the same year as reported to the DAC in earlier surveys.

28. For 2009, as reported in last year's report, the one-year predictability ratio was 103%, *i.e.* the average donor disbursed 3% more than was forecasted one year earlier. The two-year predictability ratio for 2009 flows was 108%, strongly affected by the front-loading of multilateral resources to mitigate the impact of the financial crisis on developing countries in 2009.

29. For 2010, the one-year predictability ratio was 95%, meaning that the average donor disbursed 5% less in 2010 than what they had programmed and reported to the survey in the beginning of the same year. The three- and two-year predictability ratios for 2010 flows are estimated at 98% and 93%, meaning that the average donor disbursed less than what they had programmed in at the beginning of 2008 and 2009. While multilateral agencies disbursed almost exactly as they had planned in aggregate, many DAC countries reduced the level of aid programmed to countries. There is also wide variation in aggregate predictability across donors.

30. From the perspective of partner countries, the variations are even larger depending on which donors are present. For some countries, such as Indonesia and Tanzania, actual disbursements were roughly the same as the amount programmed three years earlier. At the same time, in other countries, actual disbursements were more than twice the amount (*e.g.* Nigeria and the Central African Republic) or half the amount (*e.g.* Angola and El Salvador) that what was initially programmed three years earlier.

31. Overall, these results once again reinforce the robustness of the Survey: forward spending data can be a good predictor of actual overall disbursements. Table 3 presents the aggregate predictability ratios. The full list including the predictability ratio by donor and partner country is available in Annex 4.

Table 3. Predictability ratio

Region	Predictability Ratio of 2010 flows		
	One-year predictability ratio Predictability Ratio of 2010 flows 2010 Outturn1 / programmed early 2010	Two-year predictability ratio Predictability Ratio of 2010 flows 2010 Outturn1 / programmed early 2009	Three-year predictability ratio Predictability Ratio of 2010 flows 2010 Outturn1 / programmed early 2008
DAC countries	100%	88%	90%
<i>DAC members incl. EU</i>	99%	95%	92%
Multilateral agencies	91%	97%	105%
All donors	95%	93%	98%

INITIATIVES TO ENHANCE THE USE OF THE SURVEY

32. One of the conditions for conducting the first Survey in 2007 was to keep individual donor programming by partner country confidential, since donors' indicative forward plans are subject to appropriation through their sovereign budget processes. In the Accra Agenda for Action (AAA), one year later, donors committed to "provide developing countries with regular and timely information on their rolling three- to five-year forward expenditure and/or implementation plans, with at least indicative resource allocations that developing countries can integrate in their medium-term planning and macro-economic frameworks".

33. Since Accra, partner countries have further emphasised the importance of having estimates of future available resources to utilise in their own budget planning and preparation processes. This concern has also been repeatedly raised by partner countries through the OECD/DAC Working Party on Aid Effectiveness (WP-EFF).

34. At the sixth DAC Technical Meeting for Aid Financing and Allocations Specialists in June 2010, members agreed to pilot two new initiatives. First, donors agreed to share the underlying Survey data disaggregated by donor with two partner countries and the IMF to determine whether dissemination of this information to partner countries might support enhanced transparency, predictability and accountability. Second, members agreed to pilot a possible enhancement of the Survey by reporting future aid projections in the Creditor Reporting System (CRS) format, which would capture more detailed information and therefore respond more accurately to partner country needs.

35. The two test pilots not only show how the information currently collected through the survey can assist partner countries when it is made available to them, but also how developing the survey further could contribute towards addressing some of the challenges identified by partner countries (*e.g.* in accessing more detailed estimates of future aid flows).

Survey data proven useful for partner countries

36. At the biennial meeting of the Government of Rwanda and Development Partners held in November 2010, stakeholders identified medium-term predictability of aid as a key bottleneck to the more effective use of aid in Rwanda. The Government of Rwanda emphasised the importance of ensuring that donors implemented their AAA commitments to provide forward spending information covering three to five years, stressing in particular the contribution that these efforts can make to:

- i) **Support strategic planning, policymaking and service delivery.** Through a better understanding of available levels of aid in the medium-term, more appropriate policy decisions and credible medium-term development strategies can be developed.
- ii) **Strengthen national ownership and alignment.** By responding to Rwanda's needs and priorities according to an agreed division of labour, fragmentation can be reduced.
- iii) **Improve the comprehensiveness and credibility of its Medium Term Expenditure Framework (MTEF) and annual budget.** By drawing an MTEF and annual budget on the basis of short- to medium-term expected external resources, parliamentary oversight and domestic accountability can be strengthened.

37. As a result of this meeting, and as part of its engagement with the OECD as a "focus country" of the Working Party on Aid Effectiveness (WP-EFF), the Government of Rwanda asked the OECD to share information on donors' forward spending plans reported in the Survey. Based on this specific request,

Rwanda was selected to be one of the countries in the pilot. Another country that expressed interest was Ghana; however, given the timeframe and ongoing engagements with its development partners in a related exercise at country level, Ghana could not actively participate in this particular initiative. On this basis, work went ahead in Rwanda, where the Government and the OECD worked closely together in analysing the data.

38. In order for the information provided by donor headquarters through the DAC Survey of Forward Spending Plans to be useful to partner government officials and development partners, it must offer a realistic measure of aid that can be put at their disposal for development activities.

39. CPA has several times been demonstrated to be a good approximation of the overall flows recorded at country level.¹⁵ Table 5 compares historical disbursements of CPA to Rwanda with official estimates of aid flows collected at the country level through the Development Assistance Database (DAD) and shows that the OECD's figures closely match the government's aggregate estimates of aid disbursements.

Table 4. CPA compared with recorded disbursements in Rwanda (2006-2009)

Year	CPA (USD million)	Rwanda's Development Assistance Database (USD million)	CPA / DAD (in %)
2006	513	508	101%
2007	658	612	108%
2008	870	793	110%
2009	873	845	103%

40. The Rwandan Ministry of Finance and Economic Planning (MINECOFIN) and the OECD collaborated in comparing donor aggregates from the Forward Survey on Donors' Spending Plans with documentary evidence on donor commitments and indications of future aid available through a variety of instruments at country level (*e.g.* Country Assistance Strategies, Memoranda of Understanding etc.).

41. The comparison showed that while the OECD expects that Rwanda will receive a slight increase in aid volume over the period 2010-2012, the information made available by donors directly to the Rwandan government was incomplete and thus the aid pipeline appears to decline over the same three year period, according to records at country level. There was significant variation in coverage of forward-looking aid information between donors. For example, while some donors provided consistent aggregates on forward spending plans to both the OECD and in its multi-year country strategies agreed with Rwanda, others provided inconsistent information to either the OECD or MINECOFIN, or provided no indications of forward spending in Rwanda despite sharing their plans with the OECD. Government and donors in Rwanda agreed to capture better information on forward spending information through the local aid information management system (the DAD) to help overcome data management issues.

42. Feedback from Government officials in Rwanda participating in the pilot initiative was positive. They noted that while regular dissemination of Survey data by the OECD is not a substitute for efforts by donors in country to provide more detailed forward spending information according to partner countries' needs (*e.g.* to include the composition and terms of anticipated forward spending), it does contribute towards building up a relevant information base at the country level. More specifically, sharing the Survey

15. See for instance, "Comparative Study of Data Reported to the OECD Creditor Reporting System (CRS) and to the Aid Management Platform (AMP) by OECD/Development Gateway Foundation. Available online at: <http://www.oecd.org/dataoecd/0/27/43908328.pdf>

data can help government officials to triangulate – and verify – the accuracy of estimates and forecasts gathered through other means.

43. Feedback received from IMF country teams – including representatives who attended the discussions on the forward spending Survey in Rwanda – identifies wider dissemination of Survey data as one important way to make better data available, and in turn contribute to more reliable macroeconomic forecasts.

44. The aggregate nature of the Survey is such that it cannot directly inform the preparation of budgets and plans in partner countries with any level of detail; however, it can support country-level dialogue on donors' forward spending plans. In addition, the cost of making the survey data available and providing basic support for its use is negligible. It would be a low-cost and practical way for donors to advance on their Accra commitments on aid predictability. The next section presents a parallel pilot with the aim of responding to some of these limitations.

Collecting more disaggregated forward-looking data is feasible

45. At the DAC Technical Meeting for Aid Financing and Allocations Specialists it was agreed that Austria and Belgium would pilot the reporting of future aid plans for the 2011 Survey on Donors' Forward Spending Plans in CRS++ format, which would allow for more detailed information concerning the part of CPA that was already committed. Standardised “dummy” codes would be used to capture indicative future spending envelopes not yet committed.

46. The pilot confirmed that it is possible to provide additional information for ongoing committed and planned aid projects and programmes: good quality information was readily available and can be easily incorporated in CRS submissions. Most future disbursements were assigned a “purpose code” and a “channel code”, indicating a sector and channel of delivery for each aid activity. Detailed information was also entered in the description fields for nearly every aid activity. Such information could contribute to aid planning and co-ordination at country level, and thereby to increased transparency, predictability and division of labour among donors. However, a pre-condition to this effort would be removing the confidentiality requirement around the Survey in order for this information to benefit partner countries.

47. The two donors could not provide indicative spending figures for resources that had not yet been committed to a specific project or programme. Therefore, the overall aid levels provided in the test declined rapidly over time, with 2013 aid levels only one-third of what was disbursed in 2010. This decline was not a consequence of the reporting format, but rather due to the political and budgetary constraints in the two pilot countries for providing such indicative information. This highlights the complexity of efforts required to make aid more predictable in a context that it is not only limited to technical challenges, but also structural issues related to donor agencies' planning processes for the medium- and long-term. Not all donor agencies currently work with three- to five-year rolling budget frameworks, and even if they do, in some cases there can also be strong political incentives to keep options open and not make long-term commitments. Some of the most important bottlenecks that need to be overcome to improve predictability of aid thus require addressing these technical and political constraints in donor governments.¹⁶ This should not, however, constrain donor governments from providing medium-term aid allocation information where such information exists. In fact, most agencies do have medium-term aid allocation projections that could be shared openly with partner countries and other donors in place.¹⁷

16. Deeper analysis on the structural issues around aid predictability can be found in the report “Aid Predictability – Synthesis of Findings and Good Practices” prepared by Mokoro Ltd the DAC Working Party on Aid Effectiveness – Task Team on Transparency and Predictability, available online at: <http://www.oecd.org/dataoecd/48/53/49066202.pdf>

17. Belgium is working to address these constraints and expects its survey coverage to increase in future surveys.

Key recommendations to further enhance the Survey

48. The DAC Survey on Donors' Forward Spending Plans is to date the only process at global level that regularly collects bilateral and multilateral donors' aid spending plans up to 3 years ahead. Since 2007, the surveys have informed the development community about future levels of aid to take into consideration when formulating their own development policies and aid allocations. On this basis, the survey provides a unique foundation for further efforts to improve transparency and predictability of future aid flows post HLF4.

49. A key step forward would be to **reconsider the disclosure policy to enable information collected in the survey to be widely distributed to all stakeholders**. This would not only benefit partner countries with more information on individual donors' future intentions, but could also contribute to improved coordination between donors, both at country level and in donor headquarters when making aid allocation decisions. Improvements to the survey itself can be made by **seeking to broaden CRS++ reporting to the survey to meet the need for more detailed information by partner country governments**. This is also featured as one possible enhancement of the DAC statistics to address the transparency requirements by the DAC Working Party on Statistics. The two pilot studies have demonstrated how this work could move forward and to further enhance the utility of the survey to the benefit of both partner countries and donors.

ANNEXES:

Annex 1: Survey methodology and coverage

The Secretariat collected information on 47 donors' (listed in table A1.1 below) forward spending plans in all ODA-eligible countries and for regional/multi-country programmes. The questionnaire also recorded thematic aid to be programmed, which consist of un-allocated funds not yet programmed at country level. It is expected the funds will be programmed and allocated at country level over the short term. Donors were also asked to provide information on their forward intentions in delivering budget support, as well as provide updates on priority countries and to validate the 2008 and 2009 CPA data.

Table A1.1: List of donors

DAC countries (23)	Multilateral Donors (24)
Australia	AfDF
Austria	Arab Agencies ^a
Belgium	AsDF
Canada	CarDB
Denmark	EU Institutions ^b
Finland	GAVI
France	GEF
Germany	Global Fund
Greece	IAEA
Ireland	IDA
Italy	IADB
Japan	IFAD
Korea	IMF
Luxembourg	Montreal Protocol
Netherlands	UNAIDS
New Zealand	UNDP
Norway	UNECE
Portugal	UNFPA
Spain	UNICEF
Sweden	UNRWA
Switzerland	UNTA
United Kingdom	WHO
United States	

a. The Arab agencies include: Arab Bank for Economic Development in Africa, Islamic Development Bank and OPEC Fund.

b. The EU is a member of the DAC and has its own development policy. It is presented in this report as a multilateral agency since contributions to the EU are considered multilateral ODA. (See also below an explanatory note on the special case of the EU).

Note on the special case of the European Union:

The European Union is unique among DAC members in that it plays a dual role in development assistance. It funds its aid from three main sources.

- The EU finances its budget wholly from its own resources in accordance with the Treaty on the Functioning of the European Union – unlike some multilaterals that are fully reliant on contributions by their members. In a similar exercise to that of bilateral donors, the annual EU budget process determines how much funding from the EU’s own resources will be granted to development.*
- The EDF is financed through extra-budgetary contributions from EU member states. In this way, the EU acts much like a multilateral agency, with member states periodically negotiating replenishments. Implementation of EDF activities is the responsibility of the European Commission as an institution.*
- The European Investment Bank (EIB) provides long-term finance in support of EU external co-operation and development objectives. The EIB finances work either through its own resources or the EDF’s, and is covered by a specific guarantee from the EU member states.*

Although the European Union is an individual member of the DAC in its own right with its own development policy, DAC countries’ contributions to the European Union are considered multilateral ODA. On this basis, the European Union is often presented as a multilateral institution in DAC publications, including in this report.

The general approach in the methodology has been to maximize the use of the data collected through the Survey. However, when donor coverage was not complete, the Secretariat made estimates to extend the CPA series based on the latest available data (2007–10).

The estimates were made using the same methodology as in previous surveys. Based on the assessment of historical trends in donors’ CPA disbursements at country or at the global level, several methods were used to estimate the truncated series. The methods used are described below:

- Where donors provided forward estimates for a partner country for any year to 2013, this was used.
- Where donors provided an estimate only to 2012, the Secretariat applied donors’ projected CPA annual growth rate from 2010 to 2012 to estimate the 2013 figure.
- In all other cases, CPA series were estimated by applying the compound annual growth rate for that donor/partner’s CPA between 2007 and 2009 to the latest data for that donor/partner, within the following limits to smooth out large fluctuations in growth rates observed for some partners.
 - Where the historical growth rate for a given partner country was higher than the donor’s total CPA growth rate, the Secretariat has applied a ceiling corresponding to the growth rate in total CPA for that donor.
 - Where the historical growth rate for a given partner country was negative and/or the growth rate in total CPA for that donor was negative, the Secretariat has applied a floor of zero change (i.e. carried out the last observation in real terms to 2013).
- There were two additional qualification to this methodology:
 - U.S. and Japan’s 2010 CPA levels were carried forward in real terms.
 - Greece’s and non-responding multilateral agencies’ 2009 CPA levels were carried forward in real terms.

Overall, by excluding US and Japan, estimations accounted for 20% of total CPA over the period 2011-2013. In 96% of these cases, the last observation was carried forward in real terms up to and including 2013.

Table A1.2 presents the share of donors' CPA for which they are able to provide forward programmed information. DAC countries provided forward information on 50% of CPA (compared to 52% last year). Excluding the US and Japan, the coverage was 96% compared to 94% from last year. For multilateral agencies, the coverage was 82%, or the same as last year's survey.

Table A1.2: Survey coverage

Coverage	Estimated share of CPA with forward plans up to 2011		Partner Country Coverage 2010	Estimated Share in 2010 Survey ³
	A		B	C
DAC COUNTRIES				
Australia	100%		All countries	100%
Austria	100%		Priority and major countries	90%
Belgium	98%		Priority and major countries	92%
Canada	100%		Priority and major countries	99%
Denmark	87%		Priority and major countries	64%
Finland	100%		All countries	100%
France	100%		All countries	100%
Germany	100%		All countries	100%
Greece	0%		Not Available	0%
Ireland	86%		Priority countries	96%
Italy	96%		Priority and major countries	84%
Japan	0%	²	Not Available	0%
Korea	90%		All countries	100%
Luxembourg	74%		Priority countries	81%
Netherlands	91%		Priority and major countries	84%
New Zealand	100%		All countries	100%
Norway	100%		All countries	100%
Portugal	78%		Priority countries	78%
Spain	100%	[2011] ¹	All countries	100%
Sweden	100%		Priority and major countries	94%
Switzerland	97%		Priority countries	81%
United Kingdom	92%		Priority and major countries	90%
United States	0%	²	Not Available	0%
Total DAC countries	50%			52%
Total DAC members incl. EU	58%			59%
MULTILATERAL AGENCIES				
AfDF	100%	[2012] ¹	Not Available	0%
AsDF	100%		All countries	100%
CarDB	100%		Not Available	0%
EU Institutions ⁵	100%		All countries	100%
GAVI	100%		All countries	100%
GEF	0%		Not Available	0%
Global Fund	100%		All countries	100%
IADB	0%		Not Available	0%
IAEA	100%	[2011] ¹	All countries	100%
IDA	100%		All countries	100%
IFAD	100%		All countries	100%
IMF	0%		Not Available	0%
Montreal Protocol	0%		Not Available	0%
UNAIDS	100%		Not Available	0%
UNDP	0%		All countries	100%
UNECE	0%		Not Available	0%
UNFPA	100%	[2011] ¹	All countries	100%
UNICEF	100%		All countries	100%
UNRWA	0%		Not Available	0%
UNTA	0%		Not Available	0%
WHO	0%		Not Available	...
Arab Agencies ⁴	0%		Not Available	100%
Total Multilateral	82%			82%
All Donors	63%			63%

1. The years in brackets are the years for which donors provided forward information and several years in brackets denote that donors provided varying forward information, depending on their partner countries.

2. The DAC Secretariat is in discussion with Japan and the United States about providing information on parts of their programmes for the coming Surveys.

3. Donors marked with "..." did not participate in the 2010 Survey.

4. The Arab agencies include BADEA, Islamic Development Bank and OPEC fund.

5. The European Union is also a DAC member.

Annex 2: Country Programmable Aid

Country Programmable Aid (CPA) identifies the subset of total ODA susceptible to programming at country level and for which donors generally prepare multi-year forward expenditure plans. CPA is also a good proxy for what is recorded at country level, and thus can be useful for partner country use. DAC countries' total CPA was USD 55 billion in 2009, representing 58% of DAC countries' gross bilateral ODA. CPA from all DAC members, including the EU institutions, was USD 64 billion in 2009.

CPA is defined through exclusions, by subtracting from total gross bilateral ODA activities that:

- (i) are inherently unpredictable (humanitarian aid and debt relief)
- (ii) entail no cross-border flows (administrative costs, imputed student costs, promotion of development awareness, and costs related to research and refugees in donor countries)
- (iii) do not form part of co-operation agreements between governments (food aid, aid from local governments, core funding to NGOs, ODA equity investments, aid through secondary agencies, and aid which is not allocable by country or region)

CPA is measured in disbursement terms and does not net out loan repayments since these are not usually factored into country aid decisions. CPA is derived from the standard DAC and Creditor Reporting System (CRS). CPA from multilateral agencies is measured using a similar methodology. CPA is derived by subtracting from gross multilateral outflows the non-CPA elements that are applicable to multilateral agencies (such as debt relief and humanitarian aid).

The methodology of CPA was first discussed at the DAC Workshop on Scaling up for Results and Aid Allocations in February 2007. It was developed in close collaboration with DAC members when defining the coverage of the DAC 2007 Survey on Donors' Aid Allocation Policies and Indicative Forward Spending Plans. This statistical concept has formed the basis of the DAC work on past and future country aid allocations.

The historical data series are derived from the standard DAC and CRS statistics. CPA data by donor and recipient has been retroactively derived from 2000 onwards, and is available online on www.stats.oecd.org and for full download in excel or text format on www.oecd.org/dac/cpa.

For a more comprehensive description of CPA, please refer to the development brief on CPA, available at: <http://www.oecd.org/dataoecd/32/51/45564447.pdf>

Table A2.1: CPA of DAC members in 2009

	Bilateral ODA	of which share of:				CPA
		Debt relief	Humanitarian aid and refugees in donor country	Other non-CPA items and unallocated	CPA	
	USD million	%				USD million
Australia	2 312	0%	14%	16%	70%	1 614
Austria	517	11%	16%	52%	21%	107
Belgium	1 664	7%	13%	50%	31%	515
Canada	3 182	2%	18%	43%	38%	1 204
Denmark	1 941	0%	12%	19%	69%	1 331
Finland	791	0%	18%	30%	52%	412
France	8 588	20%	5%	26%	49%	4 171
Germany	8 360	2%	6%	36%	56%	4 675
Greece	297	0%	14%	35%	52%	153
Ireland	693	0%	15%	31%	55%	382
Italy	1 053	17%	15%	13%	55%	581
Japan	13 150	1%	5%	12%	82%	10 737
Korea	616	0%	3%	12%	86%	527
Luxembourg	266	0%	16%	16%	68%	181
Netherlands	4 957	1%	13%	48%	37%	1 849
New Zealand	226	0%	4%	24%	72%	163
Norway	3 164	1%	21%	32%	46%	1 459
Portugal	312	1%	0%	21%	78%	243
Spain	4 873	3%	15%	25%	57%	2 791
Sweden	3 013	1%	22%	31%	46%	1 372
Switzerland	1 761	9%	28%	30%	33%	574
United Kingdom	7 599	1%	10%	36%	54%	4 100
United States	25 992	1%	22%	16%	61%	15 732
Total DAC countries	95 327	3%	14%	25%	58%	54 873
EU institutions ¹	13 024	1%	16%	9%	74%	9 603
Total DAC members	108 350	3%	14%	23%	60%	64 476

1. Note that the concept of bilateral ODA does not apply to the EU institutions. The column labelled bilateral ODA instead shows the total outflows from the EU institutions.

Annex 3: CPA by region and income group¹⁸

Table A3.1: Total CPA by region

Region	Actual	Provisional	Planned		
	2005	2010	2011	2012	2013
2010 USD Million					
Europe	3 459	5 001	4 660	4 744	4 843
Africa	24 356	37 176	38 033	38 941	38 170
North of Sahara	3 019	2 905	2 887	2 888	2 939
South of Sahara	20 787	32 879	34 011	34 902	34 043
Africa, regional/multi-country	550	1 392	1 135	1 151	1 189
America	7 119	9 049	8 873	8 843	8 775
North and Central America	3 170	4 567	4 351	4 343	4 255
South America	3 505	3 894	3 606	3 549	3 574
America, regional/multi-country	444	587	916	952	946
Asia	35 598	37 118	38 648	39 532	39 997
Middle East	11 013	5 877	6 114	6 055	6 077
South and Central Asia	12 938	18 873	19 758	20 593	21 006
Far East Asia	11 217	11 982	12 264	12 367	12 394
Asia, regional/multi-country	431	386	511	516	521
Oceania	1 499	1 957	1 953	2 062	2 041
All developing countries	72 032	90 301	92 167	94 123	93 826
Thematic to be programmed			2 250	2 400	2 305
Grand Total	72 032	90 301	94 417	96 523	96 131

Table A3.2: Total CPA by income group

Income	Actual	Provisional	Planned		
	2005	2010	2011	2012	2013
2010 USD Million					
LDCs	22 396	33 476	34 334	34 990	34 112
Other LICs	8 084	13 406	14 234	14 542	14 749
LMICs	32 550	29 503	29 079	29 628	29 532
UMICs	5 326	7 993	7 478	7 555	7 669
Un-allocated Income	3 660	5 923	9 292	9 807	10 070
Grand Total	72 015	90 301	94 417	96 523	96 131

18. Please note that total CPA by region in 2005 slightly differs from total CPA by income group. This is because CPA by region includes flows to Saudi Arabia and Turks and Caicos Islands. These countries graduated from the list of ODA recipients in 2008 and are now classified as high income countries, therefore not shown in table A3.2.

Annex 4: Predictability ratio

Table A4.1: Predictability ratio of 2010 CPA flows by donor

		Predictability Ratio of 2010 flows		
		One-year predictability ratio Predictability Ratio of 2010 flows 2010 Outturn ¹ / programmed early 2010	Two-year predictability ratio Predictability Ratio of 2010 flows 2010 Outturn ¹ / programmed early 2009	Three-year predictability ratio Predictability Ratio of 2010 flows 2010 Outturn ¹ / programmed early 2008
DAC countries	Australia	89%	102%	118%
	Austria	82%	n.a.	n.a.
	Belgium	95%	129%	67%
	Canada	79%	70%	102%
	Denmark	122%	97%	110%
	Finland	104%	102%	98%
	France	122%	146%	97%
	Germany	90%	152%	86%
	Greece	n.a.	n.a.	n.a.
	Ireland	90%	76%	39%
	Italy	79%	36%	34%
	Japan	n.a.	n.a.	n.a.
	Korea	113%	126%	n.a.
	Luxembourg	109%	n.a.	92%
	Netherlands	89%	80%	83%
	New Zealand	85%	66%	82%
	Norway	110%	90%	83%
	Portugal	200%	159%	232%
	Spain	81%	45%	77%
	Sweden	101%	85%	94%
	Switzerland	92%	n.a.	n.a.
	United Kingdom	111%	98%	95%
	United States	n.a.	n.a.	n.a.
DAC countries total		100%	88%	90%
<i>DAC members incl. EU</i>		99%	95%	92%
Multilateral agencies	AfDF	n.a.	175%	160%
	AsDB	86%	94%	119%
	BADEA	n.a.	n.a.	n.a.
	CarDB	n.a.	n.a.	n.a.
	EU Institutions ¹	94%	114%	97%
	GAVI	84%	104%	n.a.
	GEF	n.a.	n.a.	n.a.
	Global Fund	92%	69%	n.a.
	IAEA	99%	n.a.	n.a.
	IDA	88%	88%	102%
	IADB	n.a.	n.a.	n.a.
	IFAD	74%	n.a.	n.a.
	IMF	n.a.	n.a.	n.a.
	Isl. Dev Bank	n.a.	n.a.	n.a.
	Montreal Protocol	n.a.	n.a.	n.a.
	OFID	n.a.	n.a.	n.a.
	UNAIDS	79%	79%	n.a.
	UNDP	n.a.	n.a.	n.a.
	UNECE	n.a.	n.a.	n.a.
	UNFPA	115%	114%	127%
	UNICEF	112%	112%	122%
	UNRWA	n.a.	n.a.	n.a.
	UNTA	n.a.	n.a.	n.a.
	WHO	n.a.	n.a.	n.a.
Multilateral total		91%	97%	105%
Grand Total		95%	93%	98%

1. The EU is a member of the DAC and has its own development policy. It is presented in this report as a multilateral agency since contributions to the EU are considered multilateral ODA.

Table A4.2: Predictability ratio of 2010 CPA flows by partner country

Region	Partner country	Predictability Ratio of 2010 flows		
		One-year predictability ratio Predictability Ratio of 2010 flows 2010 Outturn ¹ / programmed early 2010	Two-year predictability ratio Predictability Ratio of 2010 flows 2010 Outturn ¹ / programmed early 2009	Three-year predictability ratio Predictability Ratio of 2010 flows 2010 Outturn ¹ / programmed early 2008
Europe	Albania	95%	70%	85%
	Belarus	204%	145%	167%
	Bosnia-Herzegovina	136%	115%	117%
	Croatia	179%	67%	63%
	Kosovo	151%	n.a.	n.a.
	Macedonia, FYR	152%	58%	68%
	Moldova	162%	157%	184%
	Montenegro	102%	64%	77%
	Serbia	96%	158%	89%
	States Ex-Yugoslavia	4%	2%	8%
	Turkey	96%	48%	55%
Ukraine	108%	101%	122%	
Europe Total		115%	91%	87%
North Sahara	Algeria	127%	67%	82%
	Egypt	89%	81%	91%
	Libya	65%	38%	36%
	Morocco	120%	77%	89%
	Tunisia	103%	90%	92%
North Sahara Total		97%	79%	87%
South Sahara	Angola	83%	41%	57%
	Benin	113%	125%	115%
	Botswana	137%	183%	256%
	Burkina Faso	119%	148%	132%
	Burundi	115%	144%	122%
	Cameroon	93%	131%	102%
	Cape Verde	196%	170%	270%
	Central African Rep.	210%	148%	237%
	Chad	116%	125%	84%
	Comoros	132%	154%	89%
	Congo, Dem. Rep.	109%	109%	99%
	Congo, Rep.	189%	124%	80%
	Cote d'Ivoire	123%	133%	169%
	Djibouti	109%	94%	231%
	Equatorial Guinea	95%	38%	26%
	Eritrea	77%	110%	60%
	Ethiopia	125%	86%	124%
	Gabon	96%	97%	154%
	Gambia	100%	98%	145%
	Ghana	91%	111%	106%
	Guinea	95%	107%	154%
	Guinea-Bissau	81%	96%	121%
	Kenya	85%	93%	78%
	Lesotho	127%	178%	161%
	Liberia	171%	123%	146%
	Madagascar	87%	73%	63%
	Malawi	121%	111%	116%
	Mali	98%	101%	99%
	Mauritania	123%	74%	104%
	Mauritius	142%	199%	121%
	Mayotte	120%	n.a.	n.a.
	Mozambique	113%	97%	94%
	Namibia	79%	58%	83%
Niger	84%	96%	115%	
Nigeria	83%	122%	196%	
Rwanda	119%	128%	141%	
Sao Tome & Principe	174%	84%	419%	
Senegal	90%	105%	141%	

Region	Partner country	Predictability Ratio of 2010 flows		
		One-year predictability ratio Predictability Ratio of 2010 flows 2010 Outturn ¹ / programmed early 2010	Two-year predictability ratio Predictability Ratio of 2010 flows 2010 Outturn ¹ / programmed early 2009	Three-year predictability ratio Predictability Ratio of 2010 flows 2010 Outturn ¹ / programmed early 2008
	Seychelles	73%	47%	420%
	Sierra Leone	116%	122%	115%
	Somalia	142%	111%	82%
	South Africa	112%	82%	73%
	St. Helena	0%	n.a.	176%
	Sudan	119%	92%	70%
	Swaziland	136%	119%	58%
	Tanzania	103%	100%	100%
	Togo	125%	113%	299%
	Uganda	100%	97%	106%
	Zambia	67%	73%	70%
	Zimbabwe	198%	177%	168%
South Sahara Total		102%	105%	105%
North and Central America	Anguilla	271%	n.a.	n.a.
	Antigua and Barbuda	1635%	1950%	1367%
	Barbados	147%	238%	49%
	Belize	244%	216%	48%
	Costa Rica	200%	120%	146%
	Cuba	254%	102%	74%
	Dominica	275%	1051%	1036%
	Dominican Republic	164%	105%	112%
	El Salvador	121%	53%	54%
	Grenada	179%	473%	579%
	Guatemala	103%	50%	80%
	Haiti	104%	129%	201%
	Honduras	101%	52%	77%
	Jamaica	210%	320%	194%
	Mexico	102%	66%	88%
	Montserrat	468%	n.a.	101%
	Nicaragua	82%	45%	65%
	Panama	134%	41%	31%
	St. Kitts-Nevis	401%	1040%	82%
	St. Lucia	265%	1082%	1187%
	St. Vincent & Grenadines	159%	554%	508%
	Trinidad and Tobago	26%	17%	2%
North and Central America Total		118%	85%	104%
South America	Argentina	110%	62%	66%
	Bolivia	96%	62%	71%
	Brazil	179%	370%	120%
	Chile	147%	375%	381%
	Colombia	116%	61%	71%
	Ecuador	90%	37%	53%
	Guyana	282%	255%	77%
	Paraguay	92%	133%	100%
	Peru	83%	47%	50%
	Suriname	103%	109%	153%
	Uruguay	65%	102%	133%
	Venezuela	145%	59%	47%
South America Total		115%	85%	79%
Middle East	Iran	195%	124%	41%
	Iraq	90%	75%	291%
	Jordan	172%	99%	133%
	Lebanon	74%	123%	59%
	Oman	115%	44%	3642%
	Palestinian Adm. Areas	91%	132%	137%
	Syria	78%	66%	88%

Region	Partner country	Predictability Ratio of 2010 flows		
		One-year predictability ratio Predictability Ratio of 2010 flows 2010 Outturn ¹ / programmed early 2010	Two-year predictability ratio Predictability Ratio of 2010 flows 2010 Outturn ¹ / programmed early 2009	Three-year predictability ratio Predictability Ratio of 2010 flows 2010 Outturn ¹ / programmed early 2008
	Yemen	75%	83%	90%
Middle East Total		89%	99%	120%
South and Central Asia	Afghanistan	120%	123%	126%
	Armenia	110%	104%	118%
	Azerbaijan	88%	75%	74%
	Bangladesh	98%	80%	109%
	Bhutan	146%	181%	253%
	Georgia	150%	128%	203%
	India	83%	83%	104%
	Kazakhstan	73%	44%	23%
	Kyrgyz Republic	73%	112%	130%
	Maldives	231%	414%	378%
	Myanmar	162%	172%	145%
	Nepal	106%	116%	109%
	Pakistan	75%	92%	90%
	Sri Lanka	104%	110%	95%
	Tajikistan	106%	187%	223%
	Turkmenistan	168%	371%	485%
	Uzbekistan	116%	125%	252%
South and Central Asia Total		95%	97%	112%
Far East Asia	Cambodia	82%	78%	109%
	China	108%	93%	161%
	Indonesia	100%	107%	99%
	Korea, Dem. Rep.	352%	413%	229%
	Laos	101%	108%	118%
	Malaysia	192%	74%	120%
	Mongolia	86%	115%	151%
	Philippines	110%	77%	88%
	Thailand	138%	53%	535%
	Timor-Leste	99%	84%	119%
	Viet Nam	93%	83%	87%
Far East Asia Total		97%	87%	97%
Oceania	Cook Islands	85%	89%	124%
	Fiji	202%	139%	63%
	Kiribati	92%	96%	123%
	Marshall Islands	472%	1314%	940%
	Micronesia, Fed. States	23%	28%	57%
	Nauru	116%	115%	106%
	Niue	146%	92%	122%
	Palau	46%	268%	124%
	Papua New Guinea	99%	114%	122%
	Samoa	167%	275%	372%
	Solomon Islands	68%	102%	136%
	Tokelau	107%	98%	117%
	Tonga	132%	180%	214%
	Tuvalu	65%	107%	116%
	Vanuatu	113%	113%	152%
	Wallis & Futuna	115%	n.a.	6041%
Oceania Total		90%	105%	126%
Grand Total		95%	93%	98%

1. Provisional figures

Annex 5: Country Programmable Aid 2010-2013¹⁹

Partner/ Region	CPA Actual		CPA Planned		CPA / GNI		CPA per capita	
	2010	2011	2012	2013	2010	2013	2010	2013
	2010 USD million				%		2010 USD million	
Europe	5 001	4 660	4 744	4 843	0.5	0.4	33.0	31.5
Albania	264	264	275	285	2.1	2.0	82.5	87.6
Belarus	86	77	81	81	0.2	0.1	9.1	8.8
Bosnia-Herzegovina	442	317	319	315	2.5	1.6	110.1	77.7
Croatia	136	113	120	154	0.2	0.2	30.7	34.8
Kosovo	538	445	461	470	9.2	6.9
Macedonia, FYR	149	132	133	138	1.7	1.4	71.9	66.4
Moldova	290	275	274	239	5.2	3.7	81.4	67.2
Montenegro	65	77	85	87	1.6	1.9	103.8	138.6
Serbia	566	534	562	565	1.3	1.1	76.5	75.9
Turkey	1 426	1 467	1 493	1 549	0.2	0.2	20.0	20.9
Ukraine	543	527	537	526	0.4	0.4	11.9	11.7
States Ex-Yugoslavia	7	26	23	23
Europe, regional	489	407	382	409
Africa	37 176	38 033	38 941	38 170	2.4	2.3	37.0	35.5
North Africa	2 905	2 887	2 888	2 939	0.5	0.6	17.9	17.2
Algeria	209	187	193	183	0.1	0.1	5.9	4.9
Egypt	959	1 060	1 073	1 102	0.6	0.6	12.3	13.3
Libya	29	37	29	30	0.0	...	4.6	4.3
Morocco	967	911	911	933	1.1	0.9	30.2	28.4
Tunisia	614	527	523	528	1.6	1.2	58.3	48.6
North of Sahara, regional	127	165	159	165
South of Sahara	32 879	34 011	34 902	34 043	3.3	2.9	39.1	37.7
Angola	314	332	373	398	0.5	0.5	17.6	20.4
Benin	634	690	662	625	9.4	8.2	65.8	59.7
Botswana	164	162	162	155	1.3	1.0	89.2	81.1
Burkina Faso	1 017	995	1 023	949	12.7	10.0	69.2	60.3
Burundi	508	476	462	385	41.2	27.2	61.4	43.8
Cameroon	659	709	702	675	2.8	2.6	32.3	30.7
Cape Verde	305	228	224	218	20.1	11.9	583.5	394.4
Central African Rep.	169	163	169	160	8.6	7.0	37.5	33.1
Chad	255	267	276	265	3.8	3.4	25.0	24.1
Comoros	40	38	48	41	7.5	7.0	58.7	56.8
Congo, Dem. Rep.	1 441	1 486	1 566	1 594	13.6	12.3	21.6	21.9
Congo, Rep.	109	117	122	121	1.4	1.3	28.3	28.8
Cote d'Ivoire	560	446	440	407	2.5	1.7	25.4	16.9
Djibouti	128	131	133	131	11.6	10.1	155.2	148.1
Equatorial Guinea	22	25	27	26	0.3	0.3	16.8	18.3
Eritrea	131	157	111	101	8.1	5.3	24.7	17.3
Ethiopia	2 341	2 418	2 491	2 517	8.6	7.3	27.6	27.6
Gabon	101	103	104	103	0.9	0.9	67.3	65.7
Gambia	112	99	107	107	15.1	12.2	65.5	57.6
Ghana	1 584	1 614	1 651	1 561	5.6	4.2	66.8	61.1
Guinea	216	210	222	210	5.7	4.9	19.7	17.6
Guinea-Bissau	94	134	139	128	11.4	13.6	56.7	70.8
Kenya	1 515	1 783	1 860	1 911	5.0	5.2	41.5	49.8
Lesotho	250	188	196	181	12.3	7.9	98.2	67.4
Liberia	417	353	349	336	64.0	41.1	109.0	79.7
Madagascar	470	571	619	597	5.5	6.3	22.1	26.0

19. Please note that Barbados, Croatia, Oman, Trinidad and Tobago will be removed from the DAC list of ODA recipients starting in 2012 with reporting on 2011 flows.

Partner/ Region	CPA Actual	CPA Planned			CPA / GNI		CPA per capita	
	2010	2011	2012	2013	2010	2013	2010	2013
	2010 USD million				%		2010 USD million	
Malawi	891	848	910	868	20.1	16.6	62.7	58.1
Mali	1 079	1 177	1 175	1 109	12.2	10.7	77.2	74.1
Mauritania	205	194	198	192	6.3	5.0	64.5	56.1
Mauritius	136	107	107	124	1.5	1.2	105.5	94.1
Mayotte	608	608	608	608	3,054.5	2,841.4
Mozambique	1 729	1 766	1 752	1 744	17.3	14.0	80.1	76.1
Namibia	280	330	338	334	3.0	3.2	133.6	155.0
Niger	461	499	527	485	8.9	7.3	31.5	30.2
Nigeria	2 125	2 055	2 190	2 190	1.2	1.0	13.6	12.9
Rwanda	986	841	890	799	20.1	13.4	98.6	75.1
St. Helena	52	56	56	55	11,747.4	12,891.2
Sao Tome & Principe	43	47	35	29	23.5	13.3	263.1	166.1
Senegal	842	894	857	811	6.4	5.4	64.2	57.6
Seychelles	17	17	17	16	2.3	1.9	195.9	186.5
Sierra Leone	361	336	338	346	18.6	15.1	58.2	51.8
Somalia	245	257	233	292	26.1	28.8
South Africa	1 065	1 046	1 078	1 030	0.4	0.3	21.3	20.0
Sudan	1 015	1 117	1 126	1 084	2.0	1.8	25.3	25.0
Swaziland	92	71	79	76	3.1	2.5	89.1	73.4
Tanzania	2 579	2 579	2 657	2 431	12.0	9.3	62.4	55.4
Togo	184	171	176	162	6.4	5.0	26.4	21.6
Uganda	1 501	1 549	1 548	1 457	9.9	7.9	43.6	38.1
Zambia	821	990	1 022	997	6.6	6.5	67.3	77.2
Zimbabwe	478	377	401	407	40.7	34.7
South of Sahara, regional	1 528	2 186	2 347	2 494
Africa, regional	1 392	1 135	1 151	1 189
America	9 049	8 873	8 843	8 775	0.2	0.2	15.7	14.7
North and Central America	4 567	4 351	4 343	4 255	0.4	0.3	24.5	22.2
Anguilla	8	4	4	4	542.6	250.9
Antigua and Barbuda	22	15	15	15	2.1	1.3	256.3	165.7
Barbados	17	9	9	10	62.7	37.4
Belize	33	28	29	32	2.8	2.5	98.4	89.1
Costa Rica	145	125	125	124	0.5	0.4	30.4	25.0
Cuba	98	64	68	68	8.7	6.0
Dominica	33	22	23	28	9.1	7.1	448.0	377.7
Dominican Republic	246	215	220	209	0.5	0.4	26.8	22.5
El Salvador	303	268	273	271	1.5	1.2	51.6	45.3
Grenada	34	29	27	26	5.8	4.1	326.6	249.4
Guatemala	293	290	270	270	0.8	0.7	20.4	17.5
Haiti	1 009	929	850	834	14.7	9.6	110.8	91.2
Honduras	376	426	419	384	2.8	2.6	47.0	45.2
Jamaica	195	152	145	152	1.6	1.1	71.6	55.6
Mexico	538	565	573	581	0.1	0.1	4.9	5.2
Montserrat	29	26	26	25	4,793.9	4,133.4
Nicaragua	508	505	471	423	8.9	6.6	78.5	64.1
Panama	144	142	142	142	0.6	0.5	40.8	38.1
St. Kitts-Nevis	17	10	9	11	3.4	2.1	315.4	194.6
St. Lucia	52	27	21	28	5.8	2.8	298.2	157.3
St. Vincent & Grenadines	23	13	13	19	4.0	3.1	211.7	172.6
Trinidad and Tobago	5	9	9	9	0.0	0.0	4.2	6.6
West Indies Unallocated	122	161	248	244
North & Central America, regional	320	316	354	347
South America	3 894	3 606	3 549	3 574	0.1	0.1	10.0	8.9
Argentina	172	152	150	149	0.1	0.0	4.3	3.6
Bolivia	607	616	620	595	3.8	3.2	58.2	56.0

Partner/ Region	CPA Actual	CPA Planned			CPA / GNI		CPA per capita	
	2010	2011	2012	2013	2010	2013	2010	2013
	2010 USD million				%		2010 USD million	
Brazil	638	427	448	462	0.0	0.0	3.3	2.3
Chile	120	99	113	124	0.1	0.1	7.0	6.9
Colombia	789	755	766	771	0.3	0.3	17.3	16.4
Ecuador	192	248	214	211	0.4	0.4	13.4	14.1
Guyana	173	170	173	183	8.5	7.7	223.8	235.2
Paraguay	156	136	141	145	1.1	0.9	24.4	21.3
Peru	664	674	680	680	0.5	0.5	22.5	22.0
Suriname	104	81	58	57	4.2	2.0	197.2	104.4
Uruguay	47	54	39	39	0.2	0.1	13.9	11.4
Venezuela	41	36	33	36	0.0	0.0	1.4	1.2
South America, regional	192	160	114	123
America, regional	587	916	952	946
Asia	37 118	38 648	39 532	39 997	0.4	0.3	9.7	10.1
Middle East	5 877	6 114	6 055	6 077	0.7	0.6	34.5	33.5
Iran	36	33	35	34	0.0	0.0	0.5	0.4
Iraq	1 624	1 576	1 547	1 527	2.3	1.6	50.7	44.4
Jordan	824	794	795	821	3.5	3.1	134.4	125.2
Lebanon	531	515	509	511	1.6	1.3	135.8	125.7
Oman	7	7	7	7	0.0	0.0	2.4	2.2
Palestinian Adm. Areas	2 062	2 139	2 126	2 168	467.6	450.3
Syria	200	237	230	227	0.4	0.4	9.6	10.1
Yemen	432	551	549	527	1.7	1.9	17.7	19.8
Middle East, regional	162	263	257	255
South and Central Asia	18 873	19 758	20 593	21 006	1.0	0.9	10.7	11.4
Afghanistan	5 376	5 136	5 176	5 164	59.4	45.6	181.3	160.9
Armenia	318	358	387	366	3.3	3.4	96.3	107.7
Azerbaijan	195	187	192	193	0.5	0.4	21.6	20.8
Bangladesh	1 938	2 490	2 770	2 735	2.1	2.4	11.6	15.5
Bhutan	139	127	131	113	9.9	6.7	203.9	158.2
Georgia	549	464	500	496	4.9	3.9	125.0	112.8
India	4 454	4 612	5 016	5 083	0.3	0.3	3.7	4.0
Kazakhstan	165	158	163	159	0.1	0.1	10.6	10.2
Kyrgyz Republic	235	367	306	291	5.1	5.3	43.2	51.6
Maldives	102	70	71	58	8.3	4.0	294.7	166.9
Myanmar	222	246	239	267	1.2	1.2	3.6	4.1
Nepal	837	935	935	975	6.4	6.6	29.7	33.6
Pakistan	2 582	2 810	2 748	3 012	1.5	1.6	15.5	17.2
Sri Lanka	877	842	849	842	2.2	1.7	43.0	40.4
Tajikistan	358	318	292	294	7.4	5.2	54.8	44.2
Turkmenistan	36	35	35	34	0.2	0.2	6.6	6.0
Uzbekistan	217	263	352	374	0.7	1.0	7.7	12.8
Central Asia, regional	135	155	159	163
South Asia, regional	30	89	176	286
South & Central Asia, regional	108	97	96	101
Far East Asia	11 982	12 264	12 367	12 394	0.2	0.2	6.3	6.4
Cambodia	747	784	776	806	7.7	6.9	52.5	53.4
China	2 036	2 002	2 075	2 100	0.0	0.0	1.5	1.5
Indonesia	3 303	3 180	3 163	3 129	0.7	0.6	14.1	12.8
Korea, Dem. Rep.	38	21	21	18	1.6	0.8
Laos	447	417	421	419	8.1	6.2	68.8	61.0
Malaysia	181	178	178	178	0.1	0.1	6.4	6.0
Mongolia	294	302	322	291	6.7	4.6	107.4	101.7
Philippines	1 116	1 063	1 087	1 091	0.7	0.6	11.9	10.9
Thailand	367	356	369	365	0.1	0.1	5.4	5.2
Timor-Leste	231	236	223	224	8.5	6.5	208.8	194.7
Viet Nam	3 164	3 631	3 644	3 666	3.6	3.4	35.8	40.1

Partner/ Region	CPA Actual	CPA Planned			CPA / GNI		CPA per capita	
	2010	2011	2012	2013	2010	2013	2010	2013
	2010 USD million				%		2010 USD million	
Far East Asia, regional	59	92	88	106
Asia, regional	386	511	516	521
Oceania	1 957	1 953	2 062	2 041	11.1	10.6	222.0	223.4
Cook Islands	15	21	15	14	777.2	715.3
Fiji	82	58	57	58	2.5	1.7	92.1	64.9
Kiribati	26	35	38	40	14.2	20.0	255.9	396.6
Marshall Islands	92	81	84	82	1,458.4	1,215.0
Micronesia, Fed. States	127	134	136	132	1,147.6	1,172.7
Nauru	21	20	19	19	2,012.6	1,844.5
Niue	17	17	14	14	12,046.2	10,460.7
Palau	26	28	25	25	1,256.5	1,216.8
Papua New Guinea	549	550	638	618	6.9	6.8	84.6	91.1
Samoa	139	90	87	83	27.4	15.2	765.9	452.3
Solomon Islands	200	168	183	181	41.8	32.6	361.7	328.3
Tokelau	15	12	11	11	12,269.6	9,311.5
Tonga	71	69	64	63	21.0	17.7	689.0	603.7
Tuvalu	14	17	14	14	1,388.2	1,373.3
Vanuatu	117	108	112	114	18.7	16.1	474.5	437.2
Wallis & Futuna	159	156	156	156	10,276.4	9,867.3
Oceania, regional	287	389	408	417
Thematic aid to be programmed	-	2 250	2 400	2 305
				
Total	90 301	94 417	96 523	96 131	0.5	0.5	16.2	16.6