

Further material for Chapter 1
Income Support for the Unemployed: How Well Has the Safety-Net Held-
Up During the "Great Recession"
of the *OECD Employment Outlook*

The following pages provide supplementary material underlying the empirical analysis presented in Chapter 1 of *OECD Employment Outlook 2011* (OECD, 2011c). This material reflects data available as of 25 May 2011.

Table 1.A1.1. The labour market impact of the crisis and early recovery periods^a has differed greatly across countries

Seasonally adjusted quarterly data

	Pre-crisis trough			Peak			Latest			Duration		Unemployment rate		Number of unemployed	
	Date	Unemployment rate (% of total labour force)	Unemployment (Thousands)	Date	Unemployment rate (% of total labour force)	Unemployment (Thousands)	Date	Unemployment rate (% of total labour force)	Unemployment (Thousands)	Numbers of quarter from trough to peak	Number of quarters from peak to the latest	%-point change from trough to peak	%-point change from peak to latest	% change from trough to peak	% change from peak to latest
OECD	2008 Q1	5.7	30 788	2009 Q4	8.8	47 452	2011 Q1	8.3	44 769	7	5	3.1	-0.5	54.1	-5.7
G7	2007 Q2	5.4	19 653	2009 Q4	8.5	30 941	2011 Q1	7.7	28 077	10	5	3.1	-0.8	57.4	-9.3
Euro Area	2008 Q1	7.3	11 412	2010 Q2	10.2	15 969	2011 Q1	9.9	15 618	9	3	2.9	-0.3	39.9	-2.2
Australia	2008 Q1	4.1	459	2009 Q3	5.8	669	2011 Q1	5.0	600	6	6	1.7	-0.8	45.9	-10.3
Austria	2008 Q2	3.5	149	2009 Q3	5.0	215	2011 Q1	4.5	196	5	6	1.5	-0.5	44.4	-8.7
Belgium	2008 Q4	7.1	338	2010 Q1	8.4	408	2011 Q1	7.7	380	5	4	1.3	-0.7	20.5	-6.9
Canada	2008 Q1	6.0	1 082	2009 Q3	8.5	1 558	2011 Q1	7.7	1 444	6	6	2.5	-0.8	44.1	-7.3
Chile	2008 Q4	7.5	590	2009 Q2	11.5	794	2011 Q1	7.3	588	2	7	4.0	-4.2	34.6	-26.0
Czech Republic	2008 Q3	4.3	223	2010 Q1	7.7	407	2011 Q1	7.0	368	6	4	3.4	-0.7	82.2	-9.5
Denmark	2008 Q2	3.1	91	2010 Q4	7.7	225	2010 Q4	7.7	225	10	0	4.6	0.0	147.6	0.0
Estonia	2007 Q4	4.0	27	2010 Q1	18.9	130	2010 Q4	14.3	98	9	3	14.9	-4.6	381.5	-24.6
Finland	2008 Q2	6.2	169	2009 Q4	8.8	233	2011 Q1	8.2	219	6	5	2.6	-0.6	38.1	-6.1
France	2008 Q2	7.6	2 192	2009 Q4	9.9	2 891	2011 Q1	9.5	2 775	6	5	2.3	-0.4	31.9	-4.0
Germany	2008 Q4	7.4	3 095	2009 Q3	7.9	3 269	2011 Q1	6.4	2 655	3	6	0.5	-1.5	5.6	-18.8
Greece	2008 Q2	7.5	368	2010 Q4	14.1	706	2010 Q4	14.1	706	10	0	6.6	0.0	91.8	0.0
Hungary	2008 Q1	7.6	318	2011 Q1	12.1	522	2011 Q1	12.1	522	12	0	4.5	0.0	64.0	0.0
Iceland	2008 Q1	2.2	4	2010 Q4	8.5	15	2011 Q1	7.4	13	11	1	6.3	-1.1	274.9	-13.5
Ireland	2007 Q3	4.4	99	2011 Q1	14.8	313	2011 Q1	14.8	313	14	0	10.4	0.0	216.5	0.0
Israel ^b	2008 Q3	6.0	177	2009 Q2	7.9	240	2010 Q4	6.6	211	3	6	1.9	-1.3	35.8	-12.0
Italy	2007 Q2	6.0	1 471	2010 Q1	8.5	2 121	2011 Q1	8.3	2 053	11	4	2.5	-0.2	44.2	-3.2
Japan ^c	2007 Q3	3.8	2 507	2009 Q3	5.4	3 570	2011 Q1	4.7	3 050	8	6	1.6	-0.7	42.4	-14.6
Korea	2008 Q1	3.1	746	2010 Q1	4.3	1 060	2011 Q1	3.9	964	8	4	1.2	-0.4	42.1	-9.1
Luxembourg	2007 Q3	4.1	9	2009 Q1	5.4	12	2011 Q1	4.4	10	6	8	1.3	-1.0	38.5	-16.7
Mexico ^d	2008 Q2	3.7	..	2009 Q3	5.8	..	2011 Q1	5.2	..	5	6	2.1	-0.6
Netherlands	2008 Q4	3.0	266	2010 Q1	4.5	395	2011 Q1	4.3	369	5	4	1.5	-0.2	48.4	-6.4
New Zealand	2007 Q4	3.4	78	2009 Q4	7.0	162	2011 Q1	6.6	155	8	5	3.6	-0.4	107.7	-4.3
Norway	2008 Q3	2.4	63	2010 Q2	3.6	94	2010 Q4	3.5	91	7	2	1.2	-0.1	49.7	-3.5
Poland	2008 Q4	7.0	1 194	2011 Q1	9.8	1 737	2011 Q1	9.8	1 737	9	0	2.8	0.0	45.5	0.0
Portugal	2008 Q1	7.6	417	2010 Q4	11.2	613	2011 Q1	11.1	609	11	1	3.6	-0.1	47.0	-0.8
Slovak Republic	2008 Q4	8.9	241	2010 Q1	14.6	394	2011 Q1	14.0	379	5	4	5.7	-0.6	63.6	-3.7
Slovenia	2008 Q4	4.2	44	2011 Q1	8.1	83	2011 Q1	8.1	83	9	0	3.9	0.0	89.4	0.0
Spain	2007 Q2	8.0	1 763	2011 Q1	20.6	4 741	2011 Q1	20.6	4 741	15	0	12.6	0.0	168.9	0.0
Sweden	2008 Q1	5.9	287	2009 Q4	8.8	433	2011 Q1	7.7	387	7	5	2.9	-1.1	50.6	-10.6
Switzerland	2008 Q4	3.2	149	2009 Q4	4.6	218	2010 Q4	3.9	217	4	4	1.4	-0.7	46.7	-0.3
Turkey	2008 Q2	9.0	2 110	2009 Q2	13.1	3 145	2010 Q4	10.0	2 548	4	6	4.1	-3.1	49.1	-19.0
United Kingdom	2008 Q1	5.1	1 594	2010 Q1	7.9	2 466	2010 Q4	7.8	2 445	8	3	2.8	-0.1	54.8	-0.9
United States	2007 Q2	4.5	6 861	2009 Q4	10.0	15 349	2011 Q1	8.9	13 693	10	5	5.5	-1.1	123.7	-10.8

a) Trough (peak) dates are defined as the start of the longest spell of consecutive increase (decrease) of the quarterly OECD harmonised unemployment rates since 2006 Q1.

b) Information on data for Israel: <http://dx.doi.org/10.1.1787/888932315602>.

c) The results for Japan excludes three prefectures (Iwate, Miyagi and Fukushima) struck by the Great East Japan Earthquake, where the survey operation is suspended since March 2011.

d) Harmonised unemployment level is only available on an annual basis.

Source: OECD calculations based on OECD Main Economic Indicators Database.

Table 1.A1.2. Comparing unemployment rate trajectories during previous downturns and the "Great Recession"

	Business cycle peak ^a		Unemployment rate peak		From business-cycle peak ^a to peak of the unemployment rate		Quarters elapsed since the beginning of the recession <i>Index base 100^b</i>				
	Date	Unemployment rate (%)	Date	Unemployment rate (%)	Number of quarters	Index base 100 ^b	Q4	Q8	Q12	Q16	Q20
OECD	1973: Q2	3.3	1977: Q1	5.1	15	152.2	99.7	149.5	148.3	151.1	146.2
	1979: Q2	4.8	1983: Q2	8.1	16	169.3	113.1	125.5	149.9	169.1	157.1
	1990: Q1	5.6	1993: Q4	7.6	15	135.2	109.8	122.3	130.2	134.5	128.9
	2000: Q2	6.0	2003: Q2	7.0	12	116.4	101.2	112.4	116.6	113.8	110.4
	2007: Q3	5.6	2009: Q4	8.5	9	151.2	107.3	149.6	147.2	142.6	132.5
G7	1973: Q2	3.3	1975: Q4	5.2	10	156.7	99.1	156.5	150.5	148.9	139.0
	1979: Q2	4.5	1983: Q1	8.0	15	178.4	114.8	129.5	158.8	177.9	159.7
	1989: Q1	5.6	1994: Q1	7.1	20	126.6	95.7	107.7	118.8	124.1	126.6
	2000: Q2	5.6	2003: Q2	6.7	12	120.2	101.3	115.3	120.1	113.5	110.6
	2007: Q3	5.4	2009: Q4	8.4	9	155.6	109.8	153.3	150.4	146.9	136.9
Four major EU countries^c	1973: Q4	2.5	1977: Q3	4.3	15	172.1	117.7	154.8	160.9	170.6	167.7
	1979: Q2	4.2	1984: Q2	8.7	20	207.5	103.8	140.2	164.8	194.3	207.7
	1990: Q1	6.9	1994: Q2	9.6	17	138.6	102.7	114.6	127.3	138.4	132.9
	2001: Q1	7.3	2005: Q4	8.3	19	112.8	100.5	107.5	108.0	111.7	112.6
	2008: Q1	6.7	2009: Q4	8.1	7	121.8	112.4	122.1	117.3	113.6	..
Australia	1973: Q4	2.1	1978: Q3	6.3	19	297.8	173.2	232.9	213.1	259.2	293.0
	1981: Q3	5.8	1983: Q3	10.2	8	177.0	121.5	177.3	151.0	140.1	138.4
	1989: Q3	6.0	1992: Q4	11.0	13	184.0	119.1	165.5	182.6	183.0	158.9
	2000: Q2	6.3	2001: Q4	6.9	6	108.7	107.1	99.8	94.8	84.7	79.2
	2007: Q3	4.3	2009: Q3	5.8	8	134.6	98.8	134.6	122.7	114.0	108.2
Austria	1974: Q1	1.3	1979: Q1	2.3	20	176.7	116.4	150.0	125.0	144.5	175.8
	1980: Q1	1.7	1983: Q2	4.3	13	248.7	123.0	169.5	243.1	231.0	208.6
	1991: Q3	3.5	1993: Q2	4.6	7	129.9	100.3	120.1	104.2	104.2	114.2
	2000: Q2	3.3	2005: Q2	5.4	20	161.9	107.2	112.6	129.4	149.2	161.9
	2008: Q1	4.0	2009: Q3	5.0	6	127.6	112.0	112.8	113.5	112.2	..
Belgium	1974: Q1	1.5	1979: Q1	6.3	20	418.9	190.7	294.7	350.7	393.3	418.7
	1980: Q2	6.5	1983: Q4	11.0	14	169.7	129.9	153.7	165.2	167.2	156.3
	1990: Q3	6.5	1994: Q2	9.9	15	152.6	99.4	110.8	137.1	151.5	149.5
	2000: Q4	6.6	2004: Q3	8.8	15	134.0	107.5	117.2	125.6	126.7	127.1
	2007: Q3	7.0	2010: Q2	8.4	11	119.9	102.3	114.1	121.9	124.0	122.5
Canada	1973: Q4	5.5	1978: Q2	8.5	18	153.5	102.4	128.8	133.9	152.4	148.6
	1981: Q2	7.2	1982: Q4	12.9	6	179.9	145.1	172.9	159.8	150.3	135.0
	1989: Q1	7.5	1992: Q4	11.7	15	155.4	101.1	134.2	140.8	147.3	145.8
	2000: Q3	6.9	2002: Q1	7.9	6	114.7	104.8	109.0	112.7	101.3	96.7
	2007: Q2	6.1	2009: Q3	8.5	9	140.4	100.2	139.5	133.0	130.5	123.9
Chile	1998: Q2	5.8	1999: Q3	10.7	5	183.4	181.6	161.0	169.6	167.2	162.4
	2008: Q2	7.8	2009: Q3	11.0	5	139.8	137.8	101.7	94.6	91.0	..
Czech Republic	2007: Q4	4.9	2010: Q1	7.7	9	155.8	91.0	151.0	152.2	140.4	137.6
Denmark	1973: Q2	0.7	1978: Q2	5.5	20	809.3	208.8	566.2	555.9	675.0	810.3
	1979: Q2	4.5	1983: Q3	8.2	17	180.5	106.4	153.6	164.5	179.0	172.6
	2000: Q4	4.0	2003: Q4	5.7	12	142.0	116.7	115.9	142.0	134.3	104.7
	2008: Q3	3.1	2011: Q1	7.5	10	239.2	191.5	224.8	222.6	199.4	..
Estonia	2007: Q4	4.2	2010: Q1	18.6	9	439.9	184.7	380.2	441.5	407.2	407.2
Finland	1980: Q3	4.7	1983: Q2	5.8	11	123.0	113.6	112.6	110.7	108.3	107.9
	1989: Q3	4.5	1994: Q1	18.9	18	416.0	102.6	197.8	299.3	396.0	383.3
	2001: Q1	9.2	2001: Q3	9.2	2	100.3	98.8	98.1	96.8	94.9	87.5
	2007: Q4	6.7	2010: Q1	9.0	9	133.7	98.2	131.6	124.4	121.4	118.4
France	1974: Q1	2.2	1979: Q1	4.9	20	218.4	133.9	174.1	183.0	200.9	218.8
	1980: Q1	5.1	1984: Q3	8.9	18	174.5	121.6	135.3	139.2	151.0	168.6
	1990: Q1	8.0	1994: Q2	10.9	17	136.3	100.0	108.8	120.0	135.0	126.8
	2000: Q4	8.1	2005: Q4	9.0	20	111.2	94.5	98.9	108.1	109.5	111.3
	2007: Q3	7.9	2009: Q4	9.5	9	120.1	92.9	115.5	116.9	114.2	111.1
Germany^d	1973: Q1	0.7	1976: Q1	2.5	12	372.5	153.0	295.5	374.2	336.4	325.8
	1979: Q2	1.8	1983: Q4	6.6	18	361.6	88.5	142.9	230.2	353.3	357.1
	1991: Q2	5.2	1996: Q2	8.4	20	160.9	116.3	140.0	157.0	149.9	161.4
	2001: Q1	7.3	2005: Q2	10.6	17	144.8	107.5	123.7	126.9	143.8	141.7
	2008: Q1	7.5	2009: Q2	7.6	5	100.4	95.6	96.2	85.6	82.0	..
Greece	1980: Q1	2.7	1983: Q4	8.6	15	313.8	142.9	197.1	280.4	312.7	304.4
	1990: Q1	7.5	1995: Q1	10.2	20	136.8	103.8	116.0	131.6	134.2	136.7
	2008: Q2	7.5	2012: Q1	16.8	15	225.4	122.7	163.2	192.6	204.6	..
Hungary	2006: Q2	7.4	2011: Q2	11.5	20	155.5	97.0	105.4	132.0	153.2	157.5
Iceland	1980: Q3	1.1	1984: Q2	2.1	15	198.1	110.5	144.8	176.2	197.1	155.2
	1987: Q3	1.2	1992: Q3	4.5	20	368.4	118.0	209.0	210.7	211.5	368.9
	2008: Q2	2.0	2009: Q2	8.0	4	407.2	412.0	392.7	424.0	396.4	..
Ireland	1990: Q3	12.7	1993: Q2	16.0	11	125.6	117.2	120.4	125.5	116.2	94.5
	2000: Q4	3.9	2003: Q3	4.9	11	124.4	101.5	117.2	117.4	113.9	113.2
	2007: Q1	4.5	2011: Q4	14.8	19	333.5	106.9	231.6	292.4	325.8	332.5
Israel^d	2000: Q4	8.8	2004: Q1	10.9	13	124.1	115.7	116.2	123.7	111.2	101.5
	2008: Q3	6.0	2009: Q2	7.9	3	132.3	129.4	111.2	101.7	95.6	..

Table 1.A1.2. Comparing unemployment rate trajectories during previous downturns and the "Great Recession" (Cont.)

	Business cycle peak ^a		Unemployment rate peak		From business-cycle peak ^a to peak of the unemployment rate		Quarters elapsed since the beginning of the recession Index base 100 ^b				
	Date	Unemployment rate (%)	Date	Unemployment rate (%)	Number of quarters	Index base 100 ^b	Q4	Q8	Q12	Q16	Q20
Italy	1973: Q4	4.1	1977: Q3	5.5	15	132.7	99.5	110.5	123.7	129.0	132.1
	1979: Q4	5.5	1984: Q1	8.6	17	155.8	100.3	124.2	128.7	144.8	153.2
	1989: Q4	9.9	1994: Q4	11.0	20	111.2	91.0	87.0	90.0	103.8	111.2
	2001: Q1	9.4	2001: Q2	9.2	1	97.3	91.5	91.1	87.0	83.0	76.9
	2007: Q1	6.1	2010: Q4	8.5	15	139.4	105.9	120.3	137.5	138.8	134.7
Japan	1973: Q1	1.2	1978: Q1	2.2	20	179.2	102.8	142.0	167.7	160.0	179.2
	1979: Q2	2.1	1984: Q1	2.7	19	133.1	94.3	110.5	113.8	128.5	131.9
	1991: Q1	2.1	1996: Q1	3.4	20	162.7	100.6	112.3	138.3	145.5	162.7
	1997: Q1	3.3	2001: Q4	5.3	19	160.3	110.7	139.5	144.8	143.1	159.3
	2007: Q4	3.9	2009: Q3	5.4	7	138.6	105.2	134.4	129.7	122.3	115.9
Korea	1977: Q4	3.6	1980: Q3	5.3	11	149.7	88.8	122.4	145.1	121.3	119.9
	1988: Q3	2.5	1993: Q2	3.1	19	124.7	102.1	100.9	96.7	102.9	117.7
	1997: Q2	2.5	1998: Q4	8.1	6	319.9	269.9	275.6	169.1	156.6	131.0
	2008: Q1	3.1	2010: Q1	4.3	8	139.3	113.5	139.3	124.5	109.9	..
Luxembourg	1979: Q3	0.7	1984: Q1	1.8	18	258.6	103.7	152.0	189.1	243.0	256.3
	1991: Q2	1.4	1996: Q2	3.2	20	229.3	113.4	141.1	192.1	211.4	229.3
	2000: Q4	2.5	2005: Q3	4.8	19	191.3	105.1	128.4	158.1	172.4	191.3
	2007: Q3	4.3	2010: Q4	6.2	13	142.4	101.0	135.5	140.9	122.2	110.2
Mexico	2000: Q3	2.7	2004: Q3	3.8	16	143.0	97.4	111.8	114.0	143.0	130.3
	2007: Q3	3.6	2009: Q3	5.9	8	164.5	107.2	164.5	147.3	126.2	107.5
Netherlands	1979: Q4	3.6	1983: Q4	10.9	16	304.8	122.7	183.1	260.9	304.8	272.7
	1990: Q4	5.4	1994: Q3	7.3	15	135.0	93.8	100.2	124.4	133.7	124.6
	2000: Q4	2.7	2005: Q2	5.2	18	191.2	91.2	122.7	159.8	183.1	182.1
	2007: Q4	3.2	2010: Q3	4.4	11	139.2	92.3	129.4	133.2	130.2	119.9
New Zealand	1986: Q3	4.1	1991: Q3	11.2	20	269.8	99.8	154.1	178.2	195.4	269.8
	1997: Q2	6.8	1998: Q4	7.9	6	117.2	116.2	107.7	93.3	79.9	78.0
	2007: Q4	3.4	2011: Q2	7.1	14	206.3	131.8	202.9	195.9	200.9	161.3
Norway	1986: Q2	1.9	1990: Q1	5.4	15	280.7	95.4	157.6	251.6	271.7	269.8
	1998: Q3	3.1	2003: Q3	4.6	20	146.8	103.9	109.9	114.8	120.0	146.8
	2008: Q2	2.5	2010: Q4	3.7	10	145.3	122.8	140.5	137.6	124.5	..
Poland	1999: Q4	15.8	2002: Q3	20.3	11	129.1	103.8	119.9	127.7	124.1	115.3
	2007: Q4	8.6	2010: Q1	10.0	9	116.7	79.1	99.9	110.0	106.0	93.2
Portugal	1991: Q2	4.4	1996: Q2	7.5	20	170.7	91.2	123.2	156.6	164.3	170.7
	2000: Q3	4.0	2005: Q3	7.8	20	196.3	100.7	127.9	156.0	173.8	196.3
	2007: Q4	7.9	2012: Q4	13.0	20	165.6	99.7	129.0	142.1	154.5	165.6
Slovak Republic	1998: Q1	12.2	2001: Q3	19.4	14	159.2	121.4	150.9	157.5	154.2	146.4
	2008: Q4	8.8	2010: Q1	14.6	5	165.0	160.5	160.9	153.7	138.8	..
Slovenia	2008: Q3	4.3	2011: Q1	7.8	10	182.3	149.1	169.7	181.2	175.0	..
Spain	1991: Q2	12.0	1994: Q3	19.3	13	161.2	108.7	141.3	160.9	156.1	148.9
	2001: Q3	10.0	2002: Q3	11.2	4	112.2	112.2	110.7	105.6	86.6	84.2
	2007: Q2	7.9	2011: Q1	20.6	15	258.9	130.7	224.2	251.1	256.7	244.6
Sweden	1975: Q1	2.2	1978: Q3	3.1	14	138.7	93.5	100.4	127.2	128.3	111.7
	1980: Q1	2.5	1983: Q3	4.6	14	185.8	115.5	159.1	176.0	172.1	149.9
	1989: Q4	1.9	1993: Q4	11.7	16	602.2	134.5	238.7	395.2	602.2	558.3
	2000: Q2	7.0	2005: Q2	7.9	20	113.2	82.0	83.3	91.1	106.2	113.2
	2007: Q2	6.1	2009: Q4	8.8	10	145.0	98.9	138.0	141.5	124.2	116.8
Switzerland	1980: Q4	0.2	1984: Q2	1.1	14	670.2	145.3	379.5	521.6	610.4	483.3
	1990: Q1	0.4	1993: Q4	4.1	15	953.8	349.1	539.1	791.1	914.0	816.0
	2000: Q3	2.6	2004: Q3	4.4	16	167.4	85.6	116.2	156.2	167.4	165.0
	2007: Q4	3.4	2009: Q4	4.8	8	141.0	97.7	141.0	122.2	118.9	113.4
Turkey	1987: Q4	8.8	1992: Q4	9.0	20	103.0	101.4	100.3	95.2	99.0	103.0
	1998: Q3	7.5	2003: Q2	11.2	19	148.3	113.9	86.9	118.1	141.6	140.3
	2008: Q1	9.8	2009: Q2	14.3	5	146.2	143.5	126.3	109.7	108.7	..
United Kingdom	1973: Q1	3.9	1977: Q4	5.7	19	147.4	92.3	102.3	136.2	141.6	144.8
	1979: Q2	5.3	1984: Q2	11.9	20	224.2	119.4	180.5	199.8	215.8	224.2
	1989: Q2	7.2	1993: Q1	10.6	15	146.9	95.7	119.8	135.4	143.6	134.3
	2000: Q2	5.5	2000: Q3	5.3	1	96.7	91.4	93.8	89.8	87.4	86.5
	2007: Q3	5.3	2011: Q4	8.3	17	155.9	110.1	147.5	145.1	153.7	155.2
United States	1973: Q2	4.9	1975: Q2	8.9	8	180.1	105.5	180.1	153.6	145.0	122.0
	1978: Q4	5.9	1982: Q4	10.7	16	181.5	100.9	125.7	140.1	181.5	145.2
	1990: Q1	5.3	1992: Q3	7.6	10	143.9	124.0	139.2	134.9	123.7	103.4
	2000: Q2	3.9	2003: Q2	6.2	12	155.8	111.7	148.0	155.8	141.5	129.3
	2007: Q3	4.7	2009: Q4	10.0	9	214.1	129.4	207.3	205.3	187.1	167.4

..: not available.

a) The business-cycle peak refers to the peak of the output gap.

b) Index base 100 of the unemployment rate at the preceding business-cycle peak.

c) Aggregated unemployment of the following countries: France, Germany, Italy and the United Kingdom.

d) The data for recessions during the 70's in Germany have been calculated by chaining the data for the whole of Germany to the corresponding data for Western Germany prior to 1992.

e) Information on data for Israel: <http://dx.doi.org/10.1.1787/888932315602>.

Source: OECD calculations based on the OECD Economic Outlook No. 89 Database and Projections (published in May 2011).

Table 1.A1.3. Actual and projected changes in unemployment, 2007 to 2012

	Pre-crisis trough ^a			Actual changes (trough to 2010 Q4)			Projected changes (trough to 2012 Q4)		
	Date	Unemployment rate % of total labour force	Number of unemployed Thousands	Unemployment rate %-points change	Number of unemployed % change	Number of unemployed Change in thousands	Unemployment rate %-points change	Number of unemployed % change	Number of unemployed Change in thousands
OECD	2007 Q3	5.6	32 708	2.6	49.8	16 303	1.5	31.3	10 247
G7	2007 Q3	5.4	19 676	2.7	50.6	9 952	1.5	28.9	5 696
Four major EU countries^b	2008 Q1	6.7	8 523	1.2	18.3	1 561	0.6	10.2	872
Australia	2007 Q3	4.3	477	0.9	31.7	151	0.6	27.2	130
Austria	2008 Q1	4.0	168	0.2	8.1	14	0.0	3.2	5
Belgium	2007 Q3	7.0	338	1.0	17.5	59	0.1	5.9	20
Canada	2007 Q2	6.1	1 079	1.6	32.2	348	0.7	19.6	212
Chile	2008 Q2	7.8	565	-0.2	6.7	38	-0.6	4.1	23
Czech Republic	2007 Q4	4.9	256	2.2	46.3	118	1.3	27.6	71
Denmark	2008 Q3	3.1	95	4.3	136.4	130	3.0	94.0	90
Estonia	2007 Q4	4.2	29	10.2	243.5	70	8.3	198.9	57
Finland	2007 Q4	6.7	179	1.4	20.4	37	0.2	1.8	3
France	2007 Q3	7.9	2 211	1.2	17.7	391	0.7	12.7	280
Germany	2008 Q1	7.5	3 280	-1.0	-12.8	-420	-2.3	-30.9	-1 014
Greece	2008 Q2	7.5	368	6.7	92.8	341	8.5	119.2	438
Hungary	2006 Q2	7.4	311	3.8	53.0	165	3.0	43.1	134
Iceland	2008 Q2	2.0	4	6.0	298.2	11	3.4	167.9	6
Ireland	2007 Q1	4.5	97	9.9	212.3	207	9.9	209.0	204
Israel ^c	2008 Q3	6.0	176	0.7	19.7	35	-0.3	7.3	13
Italy	2007 Q1	6.1	1 501	2.4	41.9	629	1.9	34.2	514
Japan ^c	2007 Q4	3.9	2 593	1.2	27.9	723	0.6	13.2	343
Korea	2008 Q1	3.1	746	0.4	16.8	125	0.3	14.4	107
Luxembourg	2007 Q3	4.3	10	1.8	55.1	5	0.3	20.6	2
Mexico	2007 Q3	3.6	1 577	1.6	53.8	849	0.1	13.2	209
Netherlands	2007 Q4	3.2	286	1.1	33.9	97	0.6	21.6	62
New Zealand	2007 Q4	3.4	78	3.3	102.6	80	2.1	71.4	56
Norway	2008 Q2	2.5	66	1.2	46.7	31	0.6	27.1	18
Poland	2007 Q4	8.6	1 457	0.9	15.1	220	-0.6	-2.1	-31
Portugal	2007 Q4	7.9	440	3.3	40.8	180	5.2	63.5	279
Slovak Republic	2008 Q4	8.8	237	5.4	62.3	148	3.4	39.7	94
Slovenia	2008 Q3	4.3	45	3.4	78.5	35	3.1	70.8	32
Spain	2007 Q2	7.9	1 757	12.6	170.2	2 990	10.8	144.4	2 536
Sweden	2007 Q2	6.1	292	1.8	34.5	101	0.8	20.1	59
Switzerland	2007 Q4	3.4	151	0.8	26.3	40	0.5	20.0	30
Turkey	2008 Q1	9.8	2 326	1.2	24.7	574	0.2	17.3	403
United Kingdom	2007 Q3	5.3	1 648	2.6	51.2	844	2.9	59.2	975
United States	2007 Q3	4.7	7 142	5.0	107.2	7 658	2.9	64.5	4 608

a) Trough dates are defined using the business cycle peak (based on output gap).

b) Aggregated unemployment of the following countries: France, Germany, Italy and the United Kingdom.

c) Information on data for Israel: <http://dx.doi.org/10.1.1787/888932315602>.

Source: OECD calculations based on the *OECD Economic Outlook No. 89 Database and Projections* (published in May 2011).

Table 1.A1.4. How many jobs^a are needed to restore pre-crisis employment rates?

	Increase in unemployment 2007 Q4 - 2010 Q4 Thousands	Jobs gap in 2010 Q4 relative to 2007 Q4			Projected jobs gap	
		In thousands	% of the increase in unemployment	% of actual employment in 2010 Q4	% of projected employment in 2011 Q4	% of projected employment in 2012 Q4
OECD	16 077	15 498	96.4	2.8	2.3	1.6
G7	9 834	12 015	122.2	3.6	3.0	2.3
Four major EU countries^b	1 356	295	21.8	0.2	-0.1	-0.7
Australia	133	-44	..	-0.4	-0.5	-1.7
Austria	9	-42	..	-1.0	-1.4	-1.7
Belgium	50	35	68.9	0.8	0.7	0.2
Canada	353	375	106.2	2.2	1.1	0.4
Chile	45	-503	..	-6.9	-8.1	-8.6
Czech Republic	118	67	56.9	1.4	-0.1	-1.4
Denmark	127	133	104.7	4.7	4.1	2.8
Estonia	70	61	87.7	10.5	8.1	5.5
Finland	37	79	217.1	3.3	1.9	1.0
France	517	285	55.1	1.1	0.6	0.1
Germany	-610	-1 242	203.7	-3.1	-4.0	-4.7
Greece	315	239	75.7	5.5	8.2	7.2
Hungary	141	71	50.0	1.9	1.9	0.0
Iceland	10	10	104.9	6.3	4.3	2.8
Ireland	199	301	151.2	16.5	17.9	17.6
Israel ^c	14	-99	..	-3.3	-4.4	-4.8
Italy	568	841	148.0	3.7	3.1	2.1
Japan	723	111	15.4	0.2	-0.6	-1.3
Korea	97	69	71.0	0.3	-0.1	-0.5
Luxembourg	5	-1	..	-0.4	-1.7	-2.9
Mexico	696	1 174	168.8	2.6	1.9	1.4
Netherlands	97	130	134.2	1.5	1.3	0.5
New Zealand	80	90	112.0	4.1	4.3	2.5
Norway	35	69	197.1	2.8	2.7	2.4
Poland	220	-444	..	-2.8	-3.7	-5.2
Portugal	180	223	124.3	4.5	6.1	7.4
Slovak Republic	102	78	76.2	3.3	2.6	1.0
Slovenia	32	32	99.2	3.3	3.6	3.2
Spain	2 806	2 256	80.4	12.3	11.9	10.2
Sweden	99	128	129.9	2.8	1.5	0.9
Switzerland	40	42	105.8	1.0	0.5	-0.1
Turkey	486	-1 219	..	-5.2	-5.7	-6.2
United Kingdom	881	312	35.5	1.1	1.6	1.6
United States	7 401	10 824	146.2	7.8	7.1	6.0

.. : Denotes value not shown because the employment rate has increased (*i.e.* the job gaps is negative).

a) The job gap at a particular date is defined as the increase in employment required to restore the ratio of total employment (for persons aged 15 and over) to the working-age population (persons aged 15-64) to its value in 2007 Q4. All data are seasonally adjusted.

b) Aggregated unemployment of the following countries: France, Germany, Italy and the United Kingdom.

c) Information on data for Israel: <http://dx.doi.org/10.1.1787/888932315602>.

Source: OECD calculations based on the *OECD Economic Outlook No. 89 Database and Projections* (published in May 2011).

Table 1.A1.5. Alternative measures of labour market slack as a percentage of the corresponding population of potential workers^a

		2007Q1	2007Q2	2007Q3	2007Q4	2008Q1	2008Q2	2008Q3	2008Q4	2009Q1	2009Q2	2009Q3	2009Q4	2010 Q1	2010 Q2	2010 Q3	2010 Q4	Percentage point change, 2007 Q4-2010 Q4	
Australia	UR1	0.8	0.7	0.6	0.6	0.7	0.6	0.6	0.6	0.7	0.8	0.9	0.9	1.0	1.0	0.9	1.0	0.4	
	UR3	5.0	4.3	4.1	4.1	4.5	4.3	4.0	4.2	5.8	5.7	5.5	5.3	5.8	5.3	5.0	4.9	0.7	
	UR5	11.0	10.4	10.1	10.1	10.3	10.0	9.7	9.8	11.2	11.1	11.6	11.5	12.1	11.7	11.5	11.5	1.5	
	UR6	17.3	16.4	15.9	15.8	16.1	15.6	15.0	15.8	18.5	18.4	18.6	18.7	19.4	18.2	18.2	18.1	18.1	2.3
	UR7	11.7	10.7	10.3	10.2	10.6	10.3	9.7	10.6	13.5	13.5	13.0	13.0	13.7	12.2	12.1	11.9	11.9	1.7
Austria	UR1	1.4	1.2	1.1	1.0	1.1	0.8	0.9	0.9	1.0	0.9	1.0	1.1	1.1	1.2	1.1	1.1	1.1	0.1
	UR3	4.6	4.4	4.6	4.0	4.2	3.4	3.7	4.0	4.7	4.6	5.1	4.7	4.7	4.4	4.4	4.1	4.1	0.1
	UR5	8.4	7.4	7.7	7.4	7.7	6.1	6.9	6.9	8.4	7.4	8.2	7.8	8.4	7.2	7.6	7.4	7.4	0.0
	UR6	11.3	10.3	10.6	10.2	10.6	8.9	9.6	9.8	11.6	10.5	11.1	10.7	11.5	10.0	10.3	10.2	10.2	0.0
	UR7	7.7	7.5	7.6	6.9	7.2	6.2	6.5	7.0	8.0	7.8	8.2	7.6	7.9	7.3	7.2	7.0	7.0	0.1
Belgium	UR1	4.1	3.8	3.4	3.7	3.5	3.3	3.4	3.0	3.3	3.5	3.7	3.5	4.0	4.1	4.2	3.9	3.9	0.2
	UR3	7.9	7.6	7.2	7.0	7.0	6.3	7.7	6.8	7.9	7.5	8.2	8.1	8.6	8.1	8.6	7.8	7.8	0.8
	UR5	8.6	8.4	8.0	7.7	7.6	7.1	8.4	7.3	8.6	8.2	8.8	8.8	9.2	8.8	9.3	8.5	8.5	0.8
	UR6	12.0	11.5	11.1	11.0	11.0	10.3	11.6	11.0	12.1	11.3	11.9	12.3	12.7	11.8	12.0	11.5	11.5	0.6
	UR7	11.4	10.8	10.4	10.3	10.5	9.5	10.9	10.5	11.5	10.6	11.3	11.6	12.1	11.1	11.3	10.9	10.9	0.6
Canada	UR1	0.4	0.4	0.4	0.4	0.4	0.4	0.4	0.4	0.5	0.5	0.6	0.8	0.9	0.9	0.9	0.9	0.9	0.5
	UR3	6.6	6.0	6.0	5.5	6.3	6.1	6.2	6.0	8.3	8.4	8.5	7.8	8.7	8.1	8.2	7.1	7.1	1.6
	UR5	8.6	8.1	7.9	7.4	8.4	8.0	8.0	8.0	10.8	10.7	10.7	10.1	11.2	10.4	10.4	9.5	9.5	2.1
	UR6	12.5	12.0	11.5	10.8	12.1	11.9	11.8	11.9	15.2	15.5	15.6	14.8	16.1	15.5	15.2	14.1	14.1	3.3
	UR7	10.6	10.0	9.7	8.9	10.1	10.1	10.0	10.0	12.9	13.4	13.5	12.6	13.7	13.2	13.1	11.9	11.9	2.9
Czech Republic	UR1	3.3	2.9	2.6	2.4	2.4	2.2	2.1	2.1	2.0	1.8	2.1	2.1	2.9	3.0	3.1	3.0	3.0	0.7
	UR3	6.0	5.3	5.1	4.9	4.7	4.2	4.3	4.4	5.8	6.3	7.3	7.3	8.1	7.2	7.1	6.9	6.9	2.0
	UR5	7.0	6.1	5.9	5.6	5.4	4.9	5.0	5.1	6.7	7.3	8.3	8.2	9.1	8.1	8.1	7.8	7.8	2.3
	UR6	8.0	6.9	6.8	6.4	6.3	5.6	5.8	6.1	9.9	9.4	10.0	9.6	11.0	9.2	9.1	9.2	9.2	2.8
	UR7	7.1	6.1	6.0	5.7	5.6	4.9	5.1	5.4	9.0	8.5	9.0	8.7	10.0	8.3	8.2	8.3	8.3	2.6
Denmark	UR1	0.8	0.7	0.5	0.5	0.5	0.5	0.3	0.4	0.5	0.4	0.5	0.7	1.2	1.3	1.5	1.6	1.6	1.2
	UR3	4.4	3.6	4.0	3.2	3.4	3.0	3.4	3.5	5.2	6.0	6.1	6.7	7.8	7.3	7.3	7.3	7.3	4.2
	UR5	6.5	5.2	5.7	4.6	5.2	4.2	4.7	5.1	6.8	7.7	7.7	8.4	9.8	8.8	9.0	9.3	9.3	4.8
	UR6	10.1	9.0	9.8	8.5	9.0	7.8	8.9	9.0	11.5	11.9	11.9	12.5	14.5	12.8	13.2	13.5	13.5	4.9
	UR7	8.1	7.4	8.1	7.2	7.4	6.7	7.6	7.5	10.0	10.2	10.4	11.0	12.7	11.4	11.5	11.6	11.6	4.4
Estonia	UR1	2.8	2.4	2.0	2.0	1.6	1.4	1.8	2.0	3.0	3.2	4.1	4.9	7.4	8.5	8.1	6.6	6.6	4.6
	UR3	5.3	5.0	4.2	4.1	4.2	4.0	6.2	7.6	11.4	13.5	14.6	15.5	19.8	18.6	15.5	13.6	13.6	9.5
	UR5	9.2	9.2	8.3	7.2	7.7	7.2	9.2	10.4	15.0	18.2	19.2	20.1	23.9	23.8	20.8	17.6	17.6	10.3
	UR6	10.7	10.4	9.6	8.8	9.0	8.3	10.2	11.9	16.9	21.4	22.6	22.7	26.3	26.0	22.9	19.7	19.7	10.9
	UR7	6.9	6.3	5.5	5.7	5.6	5.1	7.3	9.2	13.3	16.9	18.2	18.3	22.4	20.9	17.7	15.9	15.9	10.1
Finland	UR1	1.8	1.6	1.5	1.4	1.3	1.1	1.1	1.2	1.2	1.5	1.7	2.0	2.0	1.9	2.0	2.2	2.2	0.8
	UR3	7.6	7.7	6.1	6.1	6.7	7.3	5.6	6.0	7.7	9.6	7.6	8.2	9.3	9.6	7.3	7.5	7.5	1.4
	UR5	10.3	10.2	8.7	9.3	9.5	9.4	8.2	8.6	10.4	12.3	10.7	11.8	12.9	12.6	10.3	11.1	11.1	1.8
	UR6	14.2	13.8	12.1	13.1	13.6	13.1	11.6	13.0	15.4	16.9	15.1	16.6	17.7	16.8	14.4	15.5	15.5	2.5
	UR7	11.6	11.4	9.6	10.0	10.9	11.1	9.1	10.6	12.8	14.3	12.1	13.2	14.3	14.0	11.6	12.1	12.1	2.1
France	UR1	3.7	3.2	3.1	2.9	3.0	2.8	2.7	2.7	2.8	3.1	3.3	3.6	3.8	3.6	3.8	3.7	3.7	0.8
	UR3	8.7	7.8	7.8	7.7	7.4	7.0	7.3	7.9	8.9	8.8	9.0	9.7	9.8	8.9	9.1	9.4	9.4	1.7
	UR5	9.7	8.7	8.8	8.6	8.4	7.9	8.4	8.9	9.8	9.7	10.2	10.7	10.7	9.9	10.2	10.3	10.3	1.7
	UR6	14.5	13.4	13.4	13.3	13.3	12.7	13.1	13.9	15.0	14.8	14.9	15.8	16.1	14.7	14.9	15.4	15.4	2.0
	UR7	13.7	12.5	12.5	12.4	12.4	11.9	12.0	13.0	14.1	13.9	13.8	14.9	15.3	13.8	13.8	14.5	14.5	2.1
Germany	UR1	5.2	4.8	4.8	4.6	4.3	4.1	3.7	3.6	3.5	3.5	3.6	3.3	3.6	3.4	3.2	3.2	3.2	-1.5
	UR3	9.4	8.5	8.4	8.1	8.2	7.7	7.1	6.9	8.0	7.7	7.8	7.2	8.0	7.0	6.7	6.5	6.5	-1.6
	UR5	10.7	9.8	9.6	9.4	9.5	9.1	8.4	8.2	9.4	9.2	9.3	8.6	9.3	8.1	7.9	7.7	7.7	-1.7
	UR6	15.6	14.7	14.5	14.2	14.8	14.4	13.6	13.6	15.4	15.8	15.3	14.5	14.9	13.5	12.9	12.6	12.6	-1.5
	UR7	14.5	13.5	13.3	13.0	13.5	13.1	12.4	12.4	14.0	14.4	13.9	13.2	13.7	12.5	11.8	11.6	11.6	-1.4
Greece	UR1	4.4	4.1	4.1	4.0	3.8	3.6	3.6	3.6	3.7	3.7	3.8	4.3	5.0	5.4	5.7	6.5	6.5	2.5
	UR3	9.1	8.1	7.9	8.1	8.3	7.2	7.2	7.9	9.3	8.9	9.3	10.3	11.7	11.8	12.4	14.2	14.2	6.1
	UR5	9.9	8.9	8.6	8.8	8.9	8.0	8.0	8.8	10.3	9.9	10.3	11.4	12.7	12.8	13.3	15.2	15.2	6.4
	UR6	14.2	11.9	11.2	12.1	12.5	10.8	10.6	12.4	14.9	13.6	13.6	15.6	17.3	16.5	17.0	19.5	19.5	7.4
	UR7	13.5	11.1	10.5	11.4	11.8	10.0	9.8	11.5	14.0	12.7	12.7	14.6	16.4	15.6	16.1	18.6	18.6	7.2
Hungary	UR1	3.6	3.5	3.3	3.5	3.5	3.7	3.7	3.9	4.0	4.0	4.2	4.6	5.2	5.5	5.7	5.7	5.7	2.2
	UR3	7.6	7.1	7.3	7.8	8.0	7.7	7.8	8.2	9.7	9.6	10.4	10.5	11.9	11.2	10.9	10.9	10.9	3.1
	UR5	11.1	10.4	10.5	11.1	11.9	11.3	11.2	11.9	13.9	13.4	14.2	14.5	16.1	15.1	14.8	14.9	14.9	3.8
	UR6	12.2	11.4	11.6	12.1	13.0	12.4	12.3	13.2	15.8	15.1	16.0	16.2	17.8	16.7	16.4	16.6	16.6	4.5
	UR7	8.7	8.1	8.4	8.9	9.2	8.8	9.0	9.6	11.7	11.5	12.3	12.2	13.7	12.8	12.6	12.7	12.7	3.8
Iceland	UR1		(0.3)	(0.2)	(0.1)	(0.1)	(0.2)	(0.2)	(0.0)	(0.3)	(0.2)	(0.5)	(0.8)	(1.1)	(1.3)	(1.3)	(1.6)	(1.6)	(1.5)
	UR3		3.1	2.1	1.9	2.4	3.0	2.5	4.1	7.1	9.1	6.0	6.7	7.7	8.7	6.4	7.4	7.4	5.4
	UR5		4.0	3.1	3.3	3.6	4.0	3.5	6.2	9.7	11.1	7.3	8.3	9.6	10.7	8.2	9.5	9.5	6.2
	UR6		5.5	4.9	4.8	5.7	5.7	5.2	8.3	13.6	15.0	11.2	12.6	14.0	14.1	11.7	14.1	14.1	9.2
	UR7		4.6	3.8	3.5	4.4	4.8	4.2	6.2	11.2	13.1	9.9	11.1	12.2	12.2	10.0	12.1	12.1	8.6
Ireland	UR1</																		

Table 1.A1.5. Alternative measures of labour market slack as a percentage of the corresponding population of potential workers^a (Cont.)

		2007Q1	2007Q2	2007Q3	2007Q4	2008Q1	2008Q2	2008Q3	2008Q4	2009Q1	2009Q2	2009Q3	2009Q4	2010 Q1	2010 Q2	2010 Q3	2010 Q4	Percentage point change, 2007 Q3-2010 Q3
Luxembourg	UR1	(1.7)	(1.4)	(0.6)	(1.0)	(1.7)	(1.9)	(1.1)	(1.8)	(1.2)	(1.3)	(0.9)	(1.2)	(1.3)	(1.3)	(0.9)	(1.6)	(0.6)
	UR3	4.6	3.9	4.0	3.8	4.3	5.0	5.5	5.4	5.8	5.1	4.3	5.3	4.9	4.2	3.9	4.6	0.8
	UR5	4.6	3.9	4.0	3.8	4.3	5.8	5.8	5.6	10.7	9.9	8.9	9.3	8.8	8.3	8.7	8.9	5.1
	UR6	5.5	4.9	5.1	4.8	6.0	7.4	7.4	7.5	12.7	11.7	10.6	10.7	10.8	9.9	10.2	10.3	5.6
	UR7	5.5	4.9	5.1	4.7	5.9	6.5	7.2	7.3	7.9	7.0	6.1	6.8	6.9	5.9	5.5	6.1	1.3
Netherlands	UR1	1.6	1.5	1.2	1.3	1.3	1.1	1.0	0.9	1.0	0.9	0.9	0.9	1.2	1.2	1.2	1.3	0.1
	UR3	4.2	3.6	3.2	3.2	3.5	3.1	2.8	2.9	3.5	3.5	3.7	4.1	4.8	4.4	4.2	4.2	1.0
	UR5	7.5	6.5	6.2	6.1	6.5	5.6	5.7	5.7	6.2	6.3	6.5	7.2	8.3	7.5	7.4	7.3	1.3
	UR6	10.0	8.7	8.6	8.5	8.8	7.7	7.9	8.0	9.6	9.4	9.7	10.4	11.8	10.4	10.4	10.3	1.8
	UR7	6.8	5.9	5.6	5.7	5.9	5.2	5.1	5.2	6.9	6.7	6.9	7.4	8.5	7.5	7.3	7.3	1.6
New Zealand	UR1	0.2	0.3	0.2	0.2	0.2	0.1	0.2	0.2	0.2	0.4	0.5	0.5	0.5	0.6	0.5	0.7	0.5
	UR3	4.3	3.6	3.5	3.3	4.3	3.8	4.1	4.4	5.6	5.8	6.3	6.8	6.6	6.7	6.2	6.6	3.3
	UR5	6.9	6.2	5.6	5.4	7.0	6.5	6.8	7.3	8.4	9.1	9.7	10.1	9.9	9.8	9.3	9.7	4.3
	UR6	10.4	9.9	9.0	9.3	10.6	10.1	10.3	11.4	12.7	13.9	14.9	14.8	14.1	14.1	13.9	14.0	4.7
	UR7	7.9	7.4	7.1	7.2	8.0	7.5	7.7	8.6	10.0	10.8	11.7	11.7	10.9	11.1	10.9	11.0	3.8
Norway	UR1	0.5	0.5	0.5	0.4	0.4	0.3	0.3	0.4	0.4	0.6	0.5	0.6	0.7	0.8	0.8	0.7	0.3
	UR3	2.7	2.8	2.5	2.1	2.6	2.8	2.5	2.6	3.1	3.4	3.3	2.9	3.7	3.9	3.6	3.3	1.1
	UR5	4.7	4.7	4.5	4.0	4.7	4.8	4.8	4.7	5.4	5.5	5.7	5.2	6.2	5.9	5.9	5.6	1.6
	UR6	8.1	8.1	7.7	7.4	8.1	8.1	8.0	8.0	8.8	8.9	8.9	8.5	9.5	9.2	9.0	8.8	1.5
	UR7	6.2	6.2	5.8	5.6	6.0	6.2	5.8	5.9	6.5	6.8	6.5	6.3	7.1	7.3	6.7	6.6	1.0
Poland	UR1	6.0	5.1	4.5	4.1	2.7	2.5	2.2	2.1	2.4	2.3	2.6	2.6	2.9	2.9	2.9	3.2	-0.9
	UR3	11.3	9.6	9.0	8.5	8.1	7.1	6.6	6.7	8.3	7.9	8.1	8.5	10.6	9.5	9.1	9.3	0.8
	UR5	15.6	13.9	13.2	12.3	11.8	10.6	9.8	9.9	11.6	11.4	11.2	11.8	14.1	12.5	12.1	12.5	0.1
	UR6	17.6	15.8	15.0	14.4	13.4	12.0	11.2	11.5	13.8	13.0	12.8	13.5	16.1	14.1	13.6	14.1	-0.3
	UR7	13.4	11.6	10.9	10.6	9.8	8.5	8.1	8.4	10.5	9.6	9.7	10.2	12.6	11.2	10.6	11.0	0.4
Portugal	UR1	4.0	3.7	3.7	3.7	3.8	3.5	3.6	3.5	3.6	4.0	4.4	4.8	5.3	5.6	5.9	5.9	2.2
	UR3	8.4	7.9	7.9	7.9	7.6	7.3	7.7	7.8	8.9	9.1	9.9	10.1	10.6	10.6	11.0	11.2	3.3
	UR5	9.7	9.2	9.2	8.9	8.8	8.4	8.9	9.0	10.0	10.2	11.2	11.3	11.8	11.7	12.2	12.4	3.5
	UR6	13.1	12.5	12.5	12.4	12.4	12.0	12.4	12.7	13.7	13.7	14.6	14.7	15.2	14.9	15.4	15.5	3.2
	UR7	11.9	11.2	11.3	11.3	11.3	11.0	11.3	11.6	12.6	12.7	13.3	13.6	14.1	13.9	14.2	14.3	3.0
Slovak republic	UR1	8.7	8.4	8.1	7.8	7.7	7.3	5.9	5.6	6.1	5.9	6.6	7.5	8.8	9.1	9.4	9.5	1.6
	UR3	11.7	11.2	11.3	10.4	10.5	10.0	9.0	8.7	10.5	11.3	12.5	13.9	15.1	14.4	14.1	13.9	3.5
	UR5	13.6	13.0	13.1	12.3	12.4	11.6	10.5	10.2	12.1	12.7	14.0	15.2	16.5	15.9	15.6	15.2	2.9
	UR6	14.2	13.5	13.5	12.6	13.0	12.1	11.2	11.1	14.5	14.8	15.4	16.4	17.8	16.8	16.5	16.1	3.5
	UR7	12.3	11.7	11.7	10.7	11.1	10.6	9.7	9.6	13.1	13.4	14.0	15.0	16.4	15.4	15.0	14.8	4.1
Slovenia	UR1	2.7	2.2	1.9	2.0	2.1	1.9	1.6	1.8	1.8	1.7	1.7	1.8	2.5	3.2	3.3	3.6	1.6
	UR3	5.6	4.5	4.4	4.7	5.1	4.1	4.1	4.3	5.3	5.6	6.1	6.4	7.1	7.0	7.0	7.7	3.0
	UR5	7.6	5.9	6.7	6.8	6.5	5.2	5.5	5.4	6.9	7.3	8.4	8.0	8.8	8.5	9.0	9.0	2.2
	UR6	8.3	6.5	7.2	7.4	7.4	6.0	6.2	6.2	8.8	8.6	9.7	9.4	10.1	9.6	10.0	9.9	2.5
	UR7	6.4	5.1	4.9	5.4	5.9	4.9	4.8	5.1	7.3	7.0	7.5	7.8	8.4	8.2	8.1	8.6	3.3
Spain	UR1	1.9	1.7	1.5	1.7	1.8	1.8	2.0	2.5	3.3	3.8	4.4	5.5	6.6	7.2	7.4	8.1	6.5
	UR3	8.5	8.0	8.0	8.6	9.6	10.4	11.3	13.9	17.4	17.9	17.9	18.8	20.0	20.1	19.8	20.3	11.7
	UR5	11.8	10.6	10.9	11.6	12.5	13.2	14.3	16.8	20.3	20.9	21.3	22.1	23.3	23.3	23.1	23.5	11.9
	UR6	15.6	14.4	14.4	15.2	16.5	17.2	18.1	21.0	25.4	25.9	26.2	27.2	28.5	28.3	27.9	28.5	13.3
	UR7	12.5	11.8	11.7	12.3	13.8	14.6	15.3	18.3	22.6	23.1	23.0	24.2	25.4	25.3	24.8	25.6	13.2
Sweden	UR1	0.9	0.9	0.8	0.8	0.8	0.7	0.8	0.8	0.9	1.0	1.1	1.4	1.5	1.6	1.5	1.5	0.7
	UR3	6.9	6.9	5.5	5.1	6.2	6.7	5.6	6.1	7.9	9.1	8.0	8.2	9.3	9.3	7.8	7.3	2.2
	UR5	9.1	8.7	7.6	7.4	8.2	8.3	7.6	8.5	10.3	11.1	10.7	11.0	11.9	11.2	10.2	10.0	2.6
	UR6	15.7	15.1	13.8	13.9	13.9	13.9	13.0	14.1	16.3	16.9	16.3	17.0	17.6	16.9	15.6	15.7	1.8
	UR7	13.6	13.5	11.9	11.8	12.0	12.4	11.1	11.9	14.0	15.0	13.8	14.4	15.3	15.1	13.4	13.2	1.4
Turkey	UR1	3.1	2.6	2.5	2.6	2.8	2.2	2.5	3.0	2.9	3.2	3.4	3.2	3.6	3.1	3.0	2.8	0.3
	UR3	11.7	9.2	9.7	10.5	11.9	9.2	10.2	12.6	16.1	13.6	13.4	13.1	14.4	11.0	11.4	11.0	0.5
	UR5	17.9	14.5	14.5	15.4	18.2	14.0	14.8	18.0	23.2	19.1	18.7	18.7	20.7	16.1	16.5	16.4	1.0
	UR6	20.7	15.7	15.7	17.5	20.9	15.2	16.2	20.2	26.5	20.6	20.1	20.7	23.7	17.5	18.1	18.4	0.8
	UR7	14.7	10.6	10.9	12.7	14.8	10.4	11.6	15.0	19.8	15.2	15.0	15.3	17.5	12.5	13.0	13.0	0.3
United Kingdom	UR1	1.3	1.3	1.3	1.3	1.3	1.4	1.4	1.5	1.6	1.8	2.0	2.1	2.4	2.6	2.6	2.7	1.4
	UR3	5.5	5.3	5.5	5.1	5.2	5.3	6.1	6.3	7.0	7.7	8.1	7.7	7.9	7.8	8.0	7.8	2.7
	UR5	7.5	7.3	7.5	7.1	7.2	7.4	8.2	8.3	9.1	9.9	10.4	10.1	10.3	10.2	10.4	10.2	3.1
	UR6	9.8	9.7	9.8	9.5	9.6	9.7	10.5	10.9	11.3	12.1	12.5	12.1	12.3	12.1	12.3	12.1	2.7
	UR7	7.9	7.7	7.9	7.6	7.7	8.5	8.9	9.3	10.0	10.2	9.8	9.9	9.8	10.0	9.8	9.8	2.2
United States	UR1	0.5	0.4	0.5	0.5	0.5	0.5	0.6	0.8	1.0	1.3	1.6	2.1	2.6	2.9	2.8	2.8	2.4
	UR3	4.8	4.4	4.7	4.6	5.3	5.2	6.0	6.6	8.8	9.1	9.6	9.5	10.4	9.5	9.5	9.2	4.6
	UR5	5.7	5.3	5.5	5.4	6.2	6.1	7.0	7.7	10.0	10.4	10.9	10.9	11.8	10.9	10.9	10.7	5.3
	UR6	8.7	8.1	8.3	8.2	9.6	9.5	10.7	12.3	15.9	16.0	16.4	16.6	17.8	16.5	16.5	16.3	8.0
	UR7	7.8	7.3	7.5	7.4	8.7	8.7	9.8	11.2	14.7	14.9	15.2	15.3	16.5	15.2	15.1	14.9	7.4
G7	UR1	1.7	1.5	1.5	1.5	1.5	1.5	1.4	1.6	1.7	1.9	2.0	2.3	2.7	2.8	2.7	2.8	1.3
	UR3	5.8	5.3	5.4	5.2	5.7	5.6	5.9	6.2	7.7	8.0	8.3	8.1	8.7	8.1	8.0	7.8	2.6
	UR5	6.9	6.4	6.5	6.4	6.9	6.8	7.1	7.5	9.1	9.4	9.7	9.6	10.2	9.6	9.5	9.4	3.0
	UR6	10.4	10.0	10.0	9.9	10.7	10.7											

Table 1.A1.6. Main changes to unemployment benefits and social assistance for job losers

	Changes to eligibility for UB/UA	Changes to generosity of UB/UA	Changes to lowest tier of income assistance
Australia	Temporary increase in asset threshold for claiminig UB starting in March 2009.		A telephone Allowance was introduced to eligible individuals who receive the Parenting payment (Single Parents)
Austria		Valorisation of the assessment base of unemployment benefits.	Doubling of the Child benefit supplement for the third and each additional child as of September 2009.
Belgium		Permanent increase in the replacement rate for first year as well as for single persons for the second year of receipt of benefits	Permanent increase in social assistance payments. Introduction of a new family benefits for children less than 5 years of age.
Canada	Automatic adjustment to increase eligibility and duration as unemployment rate rises.	Temporary extension of regular EI benefits by 5 weeks for all eligible workers and for long-tenured workers by up to an additional 20 weeks for claims established between January 4th, 2009 and September 11, 2010.	
Czech Republic		Permanent reduction by one month of UB duration to fund an increase in payment rate in the first two months. Temporary increase in duration and replacement rate for UB for those who have worked 24 months in the last three years until end of 2010.	Temporary increase in family benefits rates between July 1st and December 31st 2009.
Finland	Permanent reduction in length of employment required to be eligible to receive unemployment insurance allowance.	Increase in UB during activation period (max. 200 working days).	
France	Change in eligibility for UI benefits from 6 months worked in previous 22 months to 4 months worked in 28 months (36 months for workers over 50 years)	Change so that benefit duration is proportional to the affiliation period, resulting in higher coverage for precarious workers.	Introduction of the revenue de solidarité active to replace the revenu minimum d'insertion (RMI) and l'allocation de parent isolé (API) in July 2009.
Germany			Increase to the Age Supplement. As of January 2009, enhancement to the housing Allowance.
Greece		Introduction of a new special financial assistance for unemployed persons.	
Hungary			The social assistance system was reformed.
Iceland		Increase in duration of UB from 3 to 4 years for those who had claimed after end-April 2008 and those claiming before June 30th, 2011.	
Ireland		Duration of jobseeker's benefits reduced to 12 months.	
Israel	Between June 2009 and February 2010, additional qualifying period of employment of 9 months in the last 18 months.	As of June 2009, maximum unemployment duration extended for different age groups.	
Italy	Lump sum payment to unemployed former project contract workers.	As of January 2008, increase in replacement rates for UB.	For the 2009 calenday year, introduction of an 'extraordinary bonus' for low-income families.
Japan	Easing the eligibility criteria for employment insurance coverage for fixed-term workers, by reducing the required duration of expected employment from "one year or over" to "six months or over" in April 2009, and then to "31 days or over" in April 2010.	Extend benefit duration for hard-to-employ job seekers for three years.	As of March 2009, payments for Supplementary lone assistance ceased. As of 2009, introduction of a new scheme to provide assistance to unemployed workers who are enrolled in training programmes but do not receive unemployment benefits.
Luxembourg			As of January 2009, the 'Allocation de vie chère' replaced the Heating Expenses Allowance.
New Zealand	Since September 2010 people on Unemployment Benefit are required to re-apply for the benefit every 52 weeks and at the same time undergo a comprehensive work assessment.	The Re-Start programme was introduced in January 2009. It was a time-limited (up to 16 weeks) package of assistance for people who had been made redundant and who had been working in the same job for at least six months. Re-Start provided a replacement payment to compensate for the loss of the in-work tax credit (and equal to it); and an increase of \$100 in the maximum weekly accommodation supplement. the programme expired in January 2011.	The Family Tax Credit was increased in October 2008 and 2010.
Poland		In 2009, reduction in duration of benefits for workers living in areas with unemployment rate twice as high as the national average. Permanent increase in unemployment benefit level as of January 2010.	
Portugal	Easing of eligiblity criteria for unemployment insurance during the first two quarters of 2010. Unemployed who return to the labour market in less than six months will retain full eligibility of previous contribution periods for future unemployment allowances.	Temporary extension in duration of benefits for long-term unemployed (6 months) during 2009 and the first two quarters of 2010.	
Spain	Temporary measures whereby short periods of time spent on reduced working hours or suspension of work contract will not reduce eligibility for unemployment benefits.	Removal of waiting period for accessing unemployment benefits until the end of 2009	In 2009, family benefit rates increased.
United States	Temporary incentive payments to states that have included provisions relating to benefit eligibility in their unemployment insurance laws. Such provisions include eligibility of persons seeking part-time work and using recent work history when determining eligibility, among others.	Temporary extension of UI benefits from 26 weeks to up to 99 weeks depending on the state, until January 3 rd 2012 for applications and June 9 th 2012 for receipt of benefits. In addition, the federally, funded share of extended unemployment benefits is increased from 50% to 100% until January 4 th , 2012.	The American Recovery and Reinvestment Act (ARRA) eliminated the time limit for able-bodied adults without dependents during the period from April 1, 2009 through September 30, 2010, unless a State chooses to offer a qualifying work activity.

Source: Responses to OECD questionnaire: Employment and Social Policies in the Economic Downturn and Early Recovery and OECD (2009b).

**Table 1.A1.7. Average historical response in social benefit spending^a
in OECD countries**

OLS coefficients from an unbalanced panel regression from 1970 to 2007

	(1)	(2)
Economic conditions		
ILO unemployment rate	0.4663 [20.92]***	
Output gap		-0.3304 [10.82]***
Crisis dummy	0.1328 [0.38]	-0.3507 [1.02]
Interaction term of crisis with:		
ILO unemployment rate	0.0639 [1.28]	
Output gap		-0.1667 [1.14]
Demographic		
Share of persons aged 65+ in total population (%)	0.5165 [17.52]***	0.6764 [20.06]***
Constant	-1.7310 [5.29]***	-0.4812 [1.24]
Country dummies	Yes	Yes
Number of observations	908	823
R²	0.92	0.85

***, **, *: statistically significant at the 1%, 5% and 10% levels, respectively. Standard deviations into brackets.

a) Social security benefits paid by general government as a percentage of GDP.

Source: OECD calculations based on the *OECD Economic Outlook No. 89 Database* (published in May 2011).

Figure 1.A1.1. **Unemployment rates and broader measures of labour market slack are receding slowly, but long-term unemployment continues to rise**

Alternative measures of labour market slack, 2007 Q4-2010 Q4^a

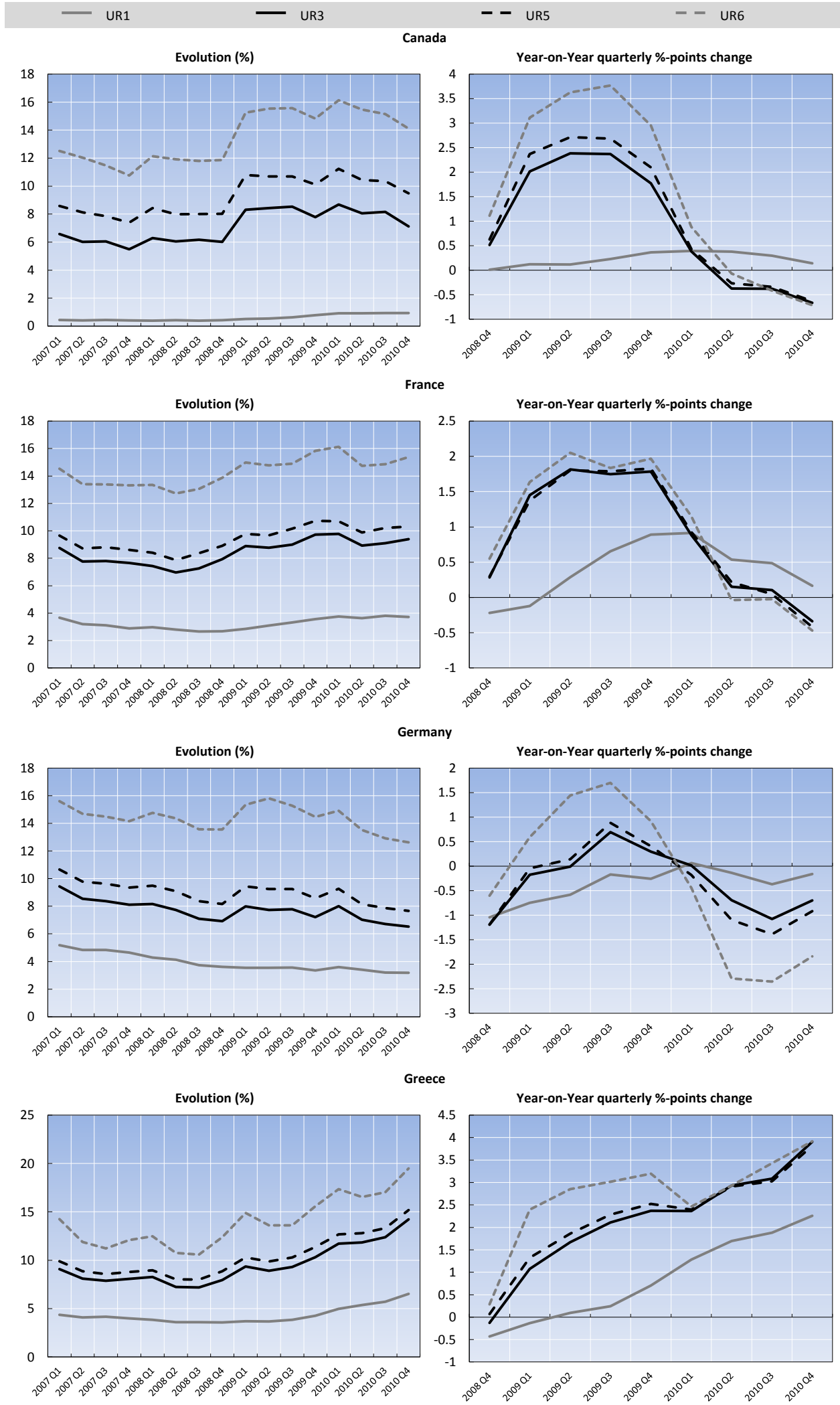


Figure 1.A1.1. **Unemployment rates and broader measures of labour market slack are receding slowly, but long-term unemployment continues to rise (Cont.)**

Alternative measures of labour market slack, 2007 Q4-2010 Q4^a

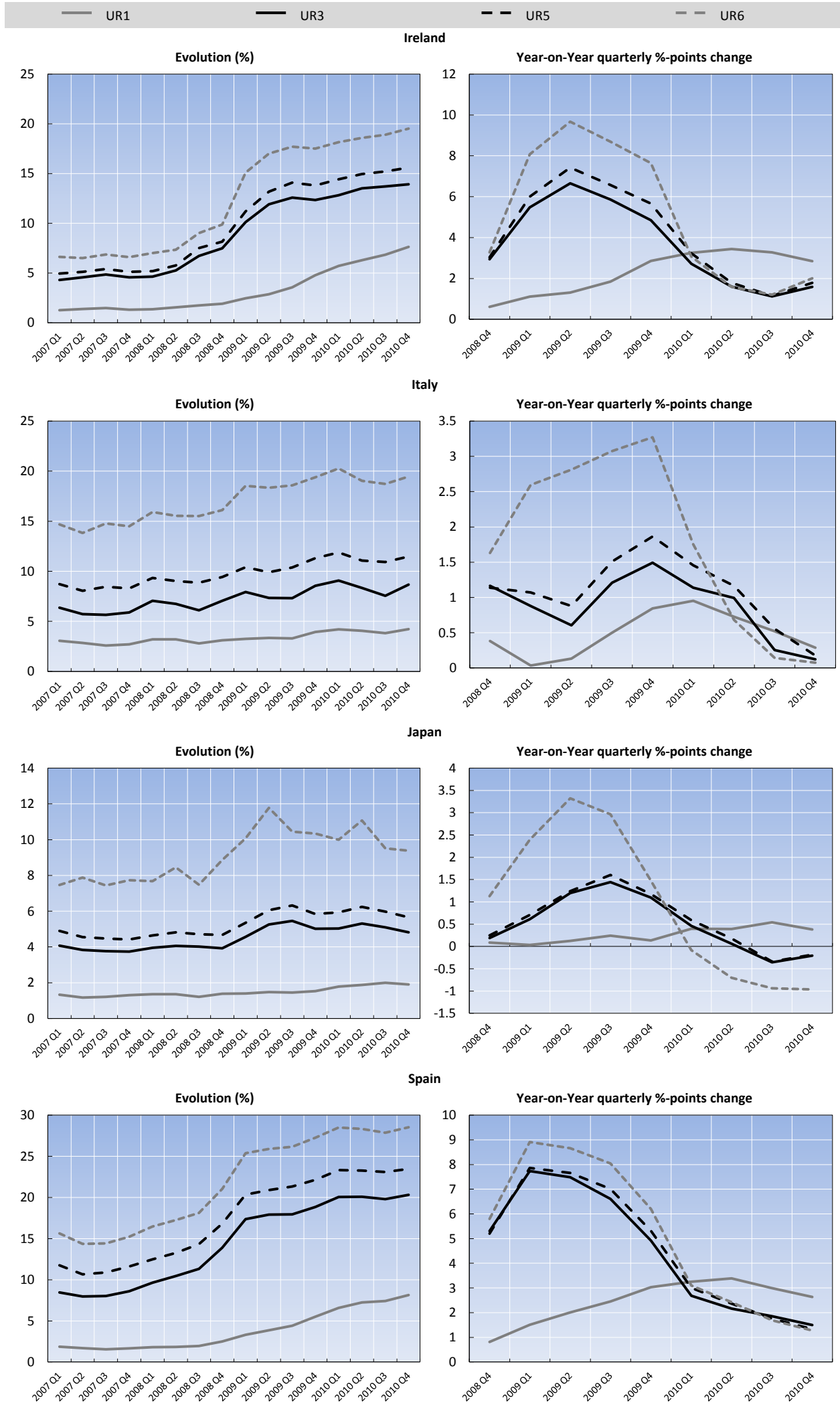
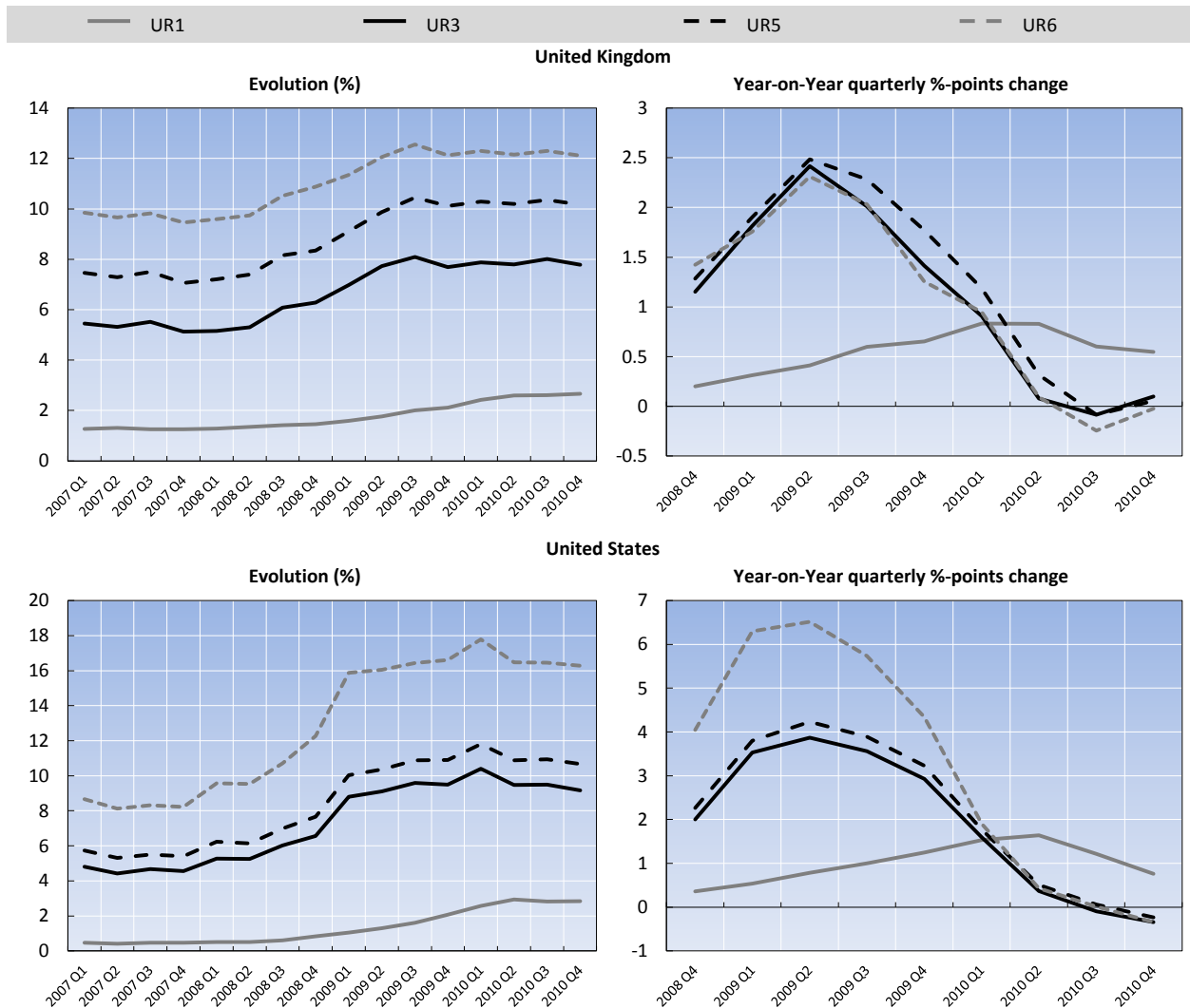


Figure 1.A1.1. **Unemployment rates and broader measures of labour market slack are receding slowly, but long-term unemployment continues to rise (Cont.)**

Alternative measures of labour market slack, 2007 Q4-2010 Q4^{a)}



UR: Unemployment rate.

Alternative measures of labour market slack:

UR1: Unemployment for one or more years, as a percentage of the labour force.

UR3: ILO unemployment rate.

UR5: Unemployed plus persons marginally attached to the labour force, as percentage of the labour force plus persons marginally attached to the labour force.

UR6: Unemployed plus marginally attached to the labour force plus underemployed workers, as a percentage of the labour force plus persons marginally attached to the labour force.

Persons marginally attached to the labour force: persons not in the labour force who did not look for work during the past four weeks, but who wish and are available to work. Discouraged workers are the subset of marginally attached workers who are not currently searching for a job because they believe none are available.

Underemployed persons: are defined as full-time workers working less than a full-week (during the survey reference week) for economic reasons plus part-time workers who wanted but could not find full-time work. In the United States, it refers to full-time workers working part-time between 1-34 hours during the survey reference week for economic reasons and part-time workers who could not find full-time work.

a) The labour market slack measures displayed in this figure have not been adjusted for seasonal variation. As a result, the values for UR3 differ slightly from the seasonally adjusted unemployment rates shown in the other figures.

Source: OECD estimates based on the European Union Labour Force Survey (EULFS) for European countries and national Labour Force Surveys for non-European countries.

Figure 1.A1.2. Evolution of unemployment rates and incidence of long-term unemployment, 2007 Q1 to 2010 Q4

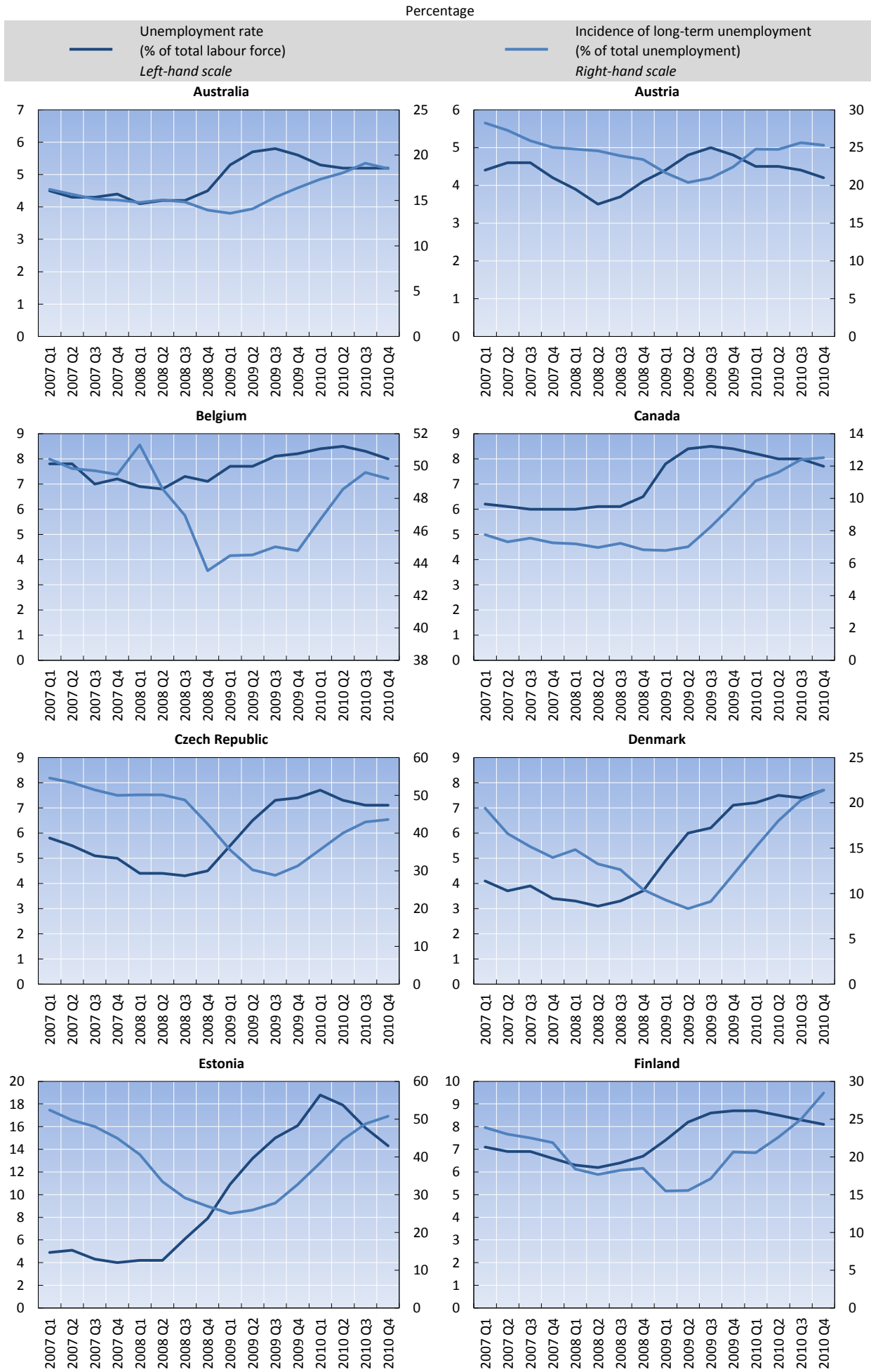


Figure 1.A1.2. Evolution of unemployment rates and incidence of long-term unemployment, 2007 Q1 to 2010 Q4 (Cont.)

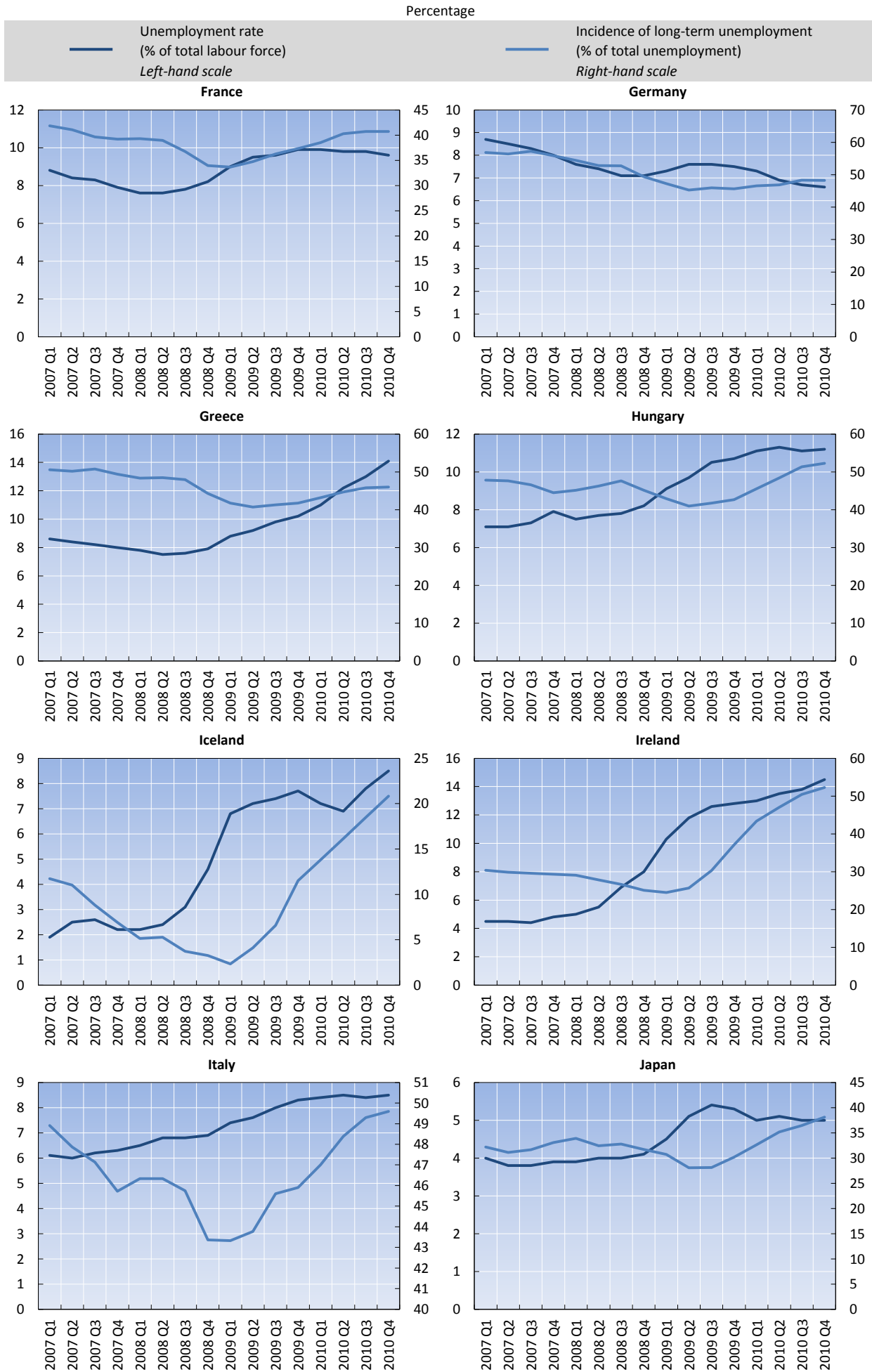


Figure 1.A1.2. Evolution of unemployment rates and incidence of long-term unemployment, 2007 Q1 to 2010 Q4 (Cont.)

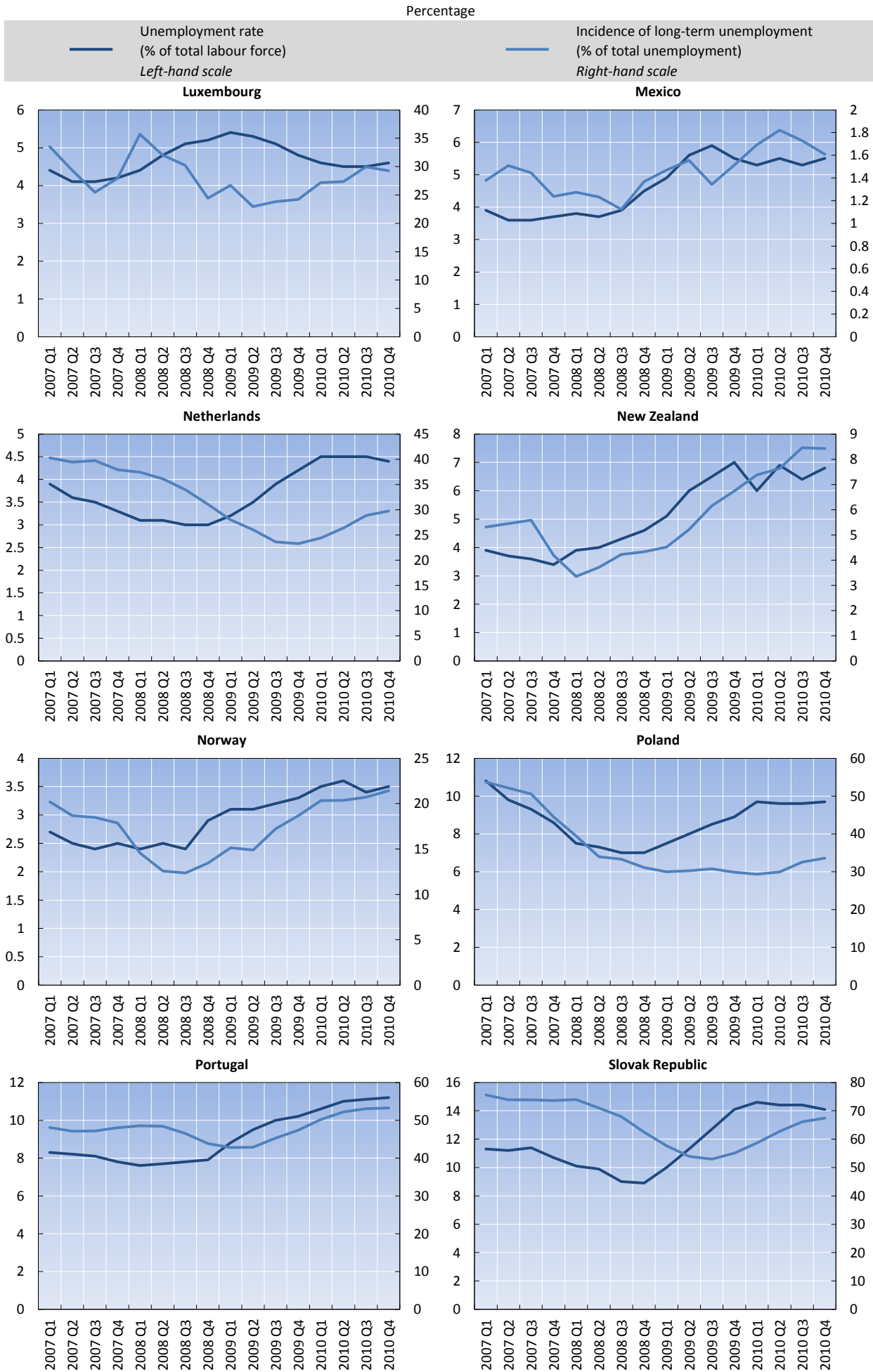
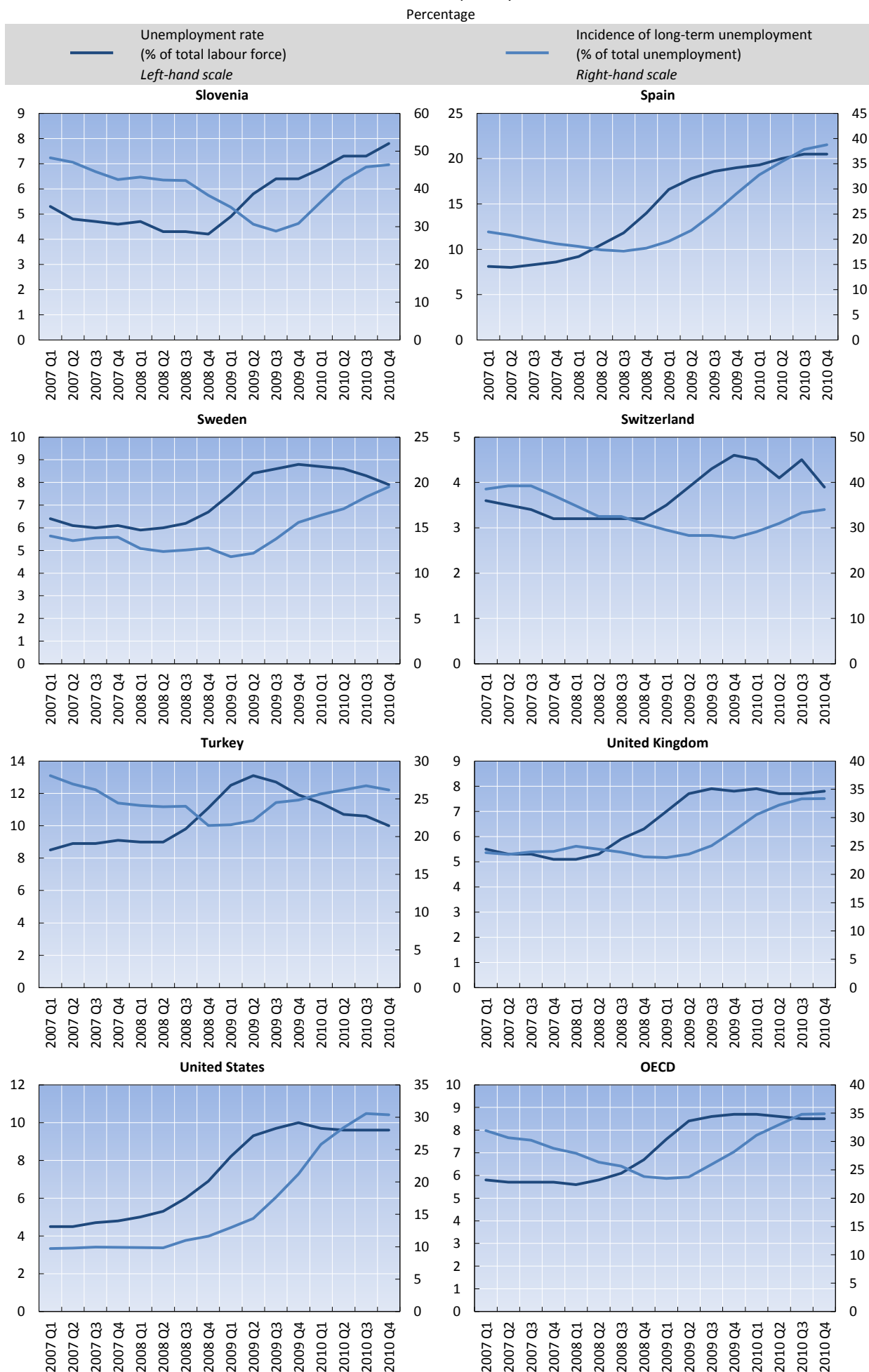


Figure 1.A1.2. Evolution of unemployment rates and incidence of long-term unemployment, 2007 Q1 to 2010 Q4 (Cont.)



Note: Estimates of the incidence of long-term unemployment smoothed using three-quarter centered moving averages of non-seasonally-adjusted data, while unemployment rates are OECD harmonised rates that are quarterly seasonally adjusted but not smoothed. OECD and G7 are the weighted averages of countries shown.

Source: OECD calculations based on *OECD Main Economic Indicators Database* for the unemployment rates and *OECD Labour Force Statistics Database* for the incidence of long-term unemployment.

Figure 1.A1.3. Evolution of unemployment rates by duration
2007 Q4-2010 Q4

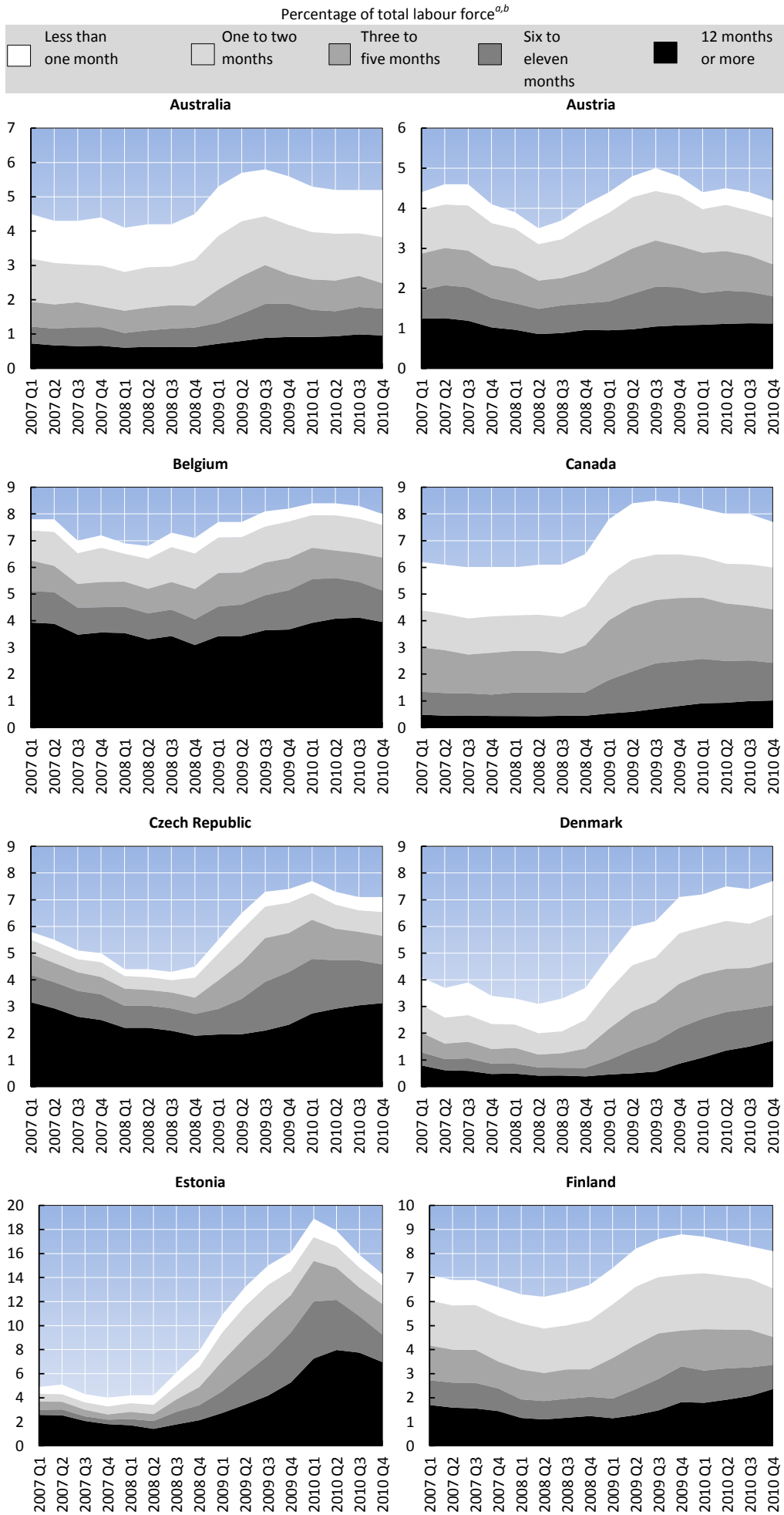


Figure 1.A1.3. Evolution of unemployment rates by duration
2007 Q4-2010 Q4 (Cont.)

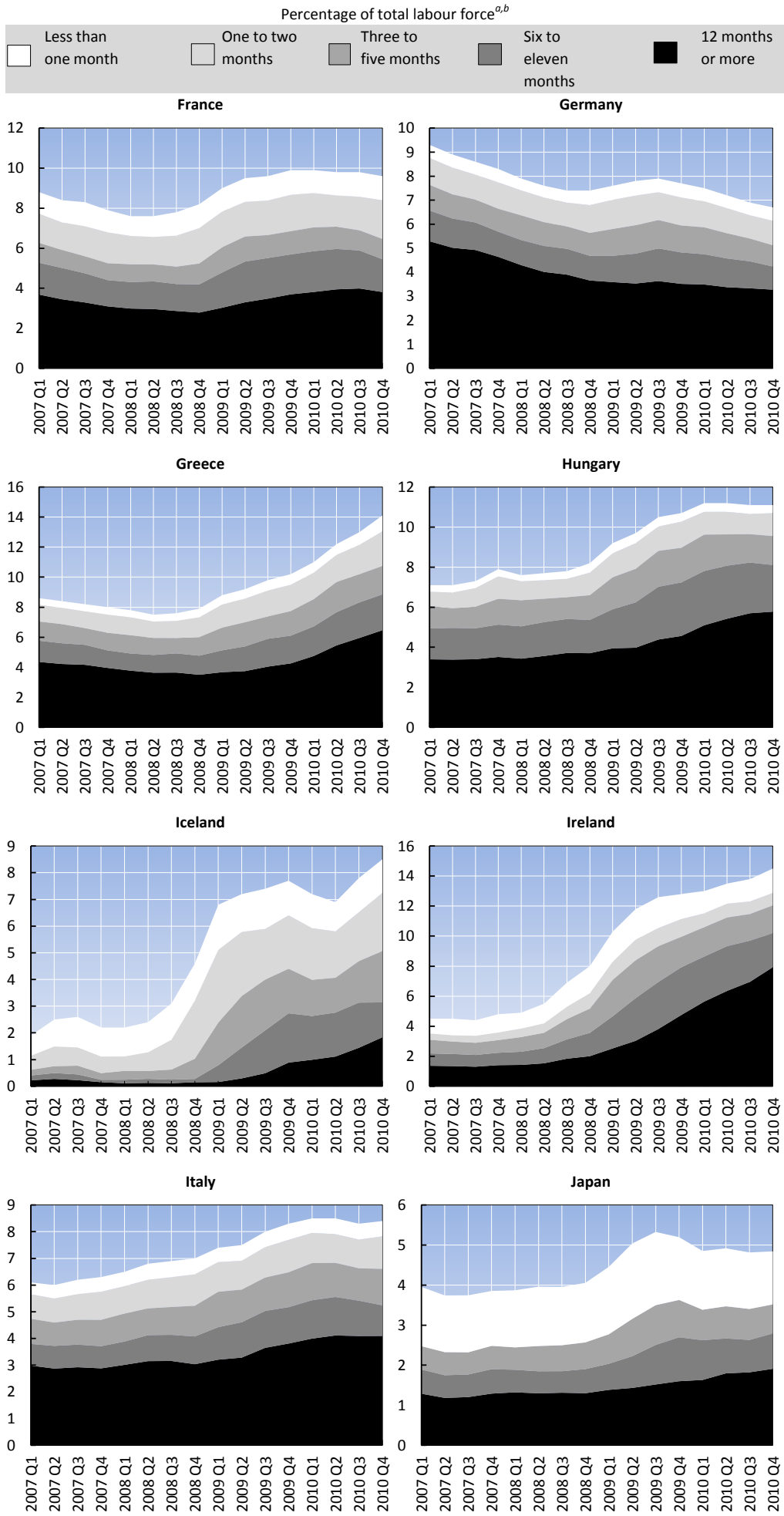


Figure 1.A1.3. Evolution of unemployment rates by duration
2007 Q4-2010 Q4 (Cont.)

Percentage of total labour force^{a,b}

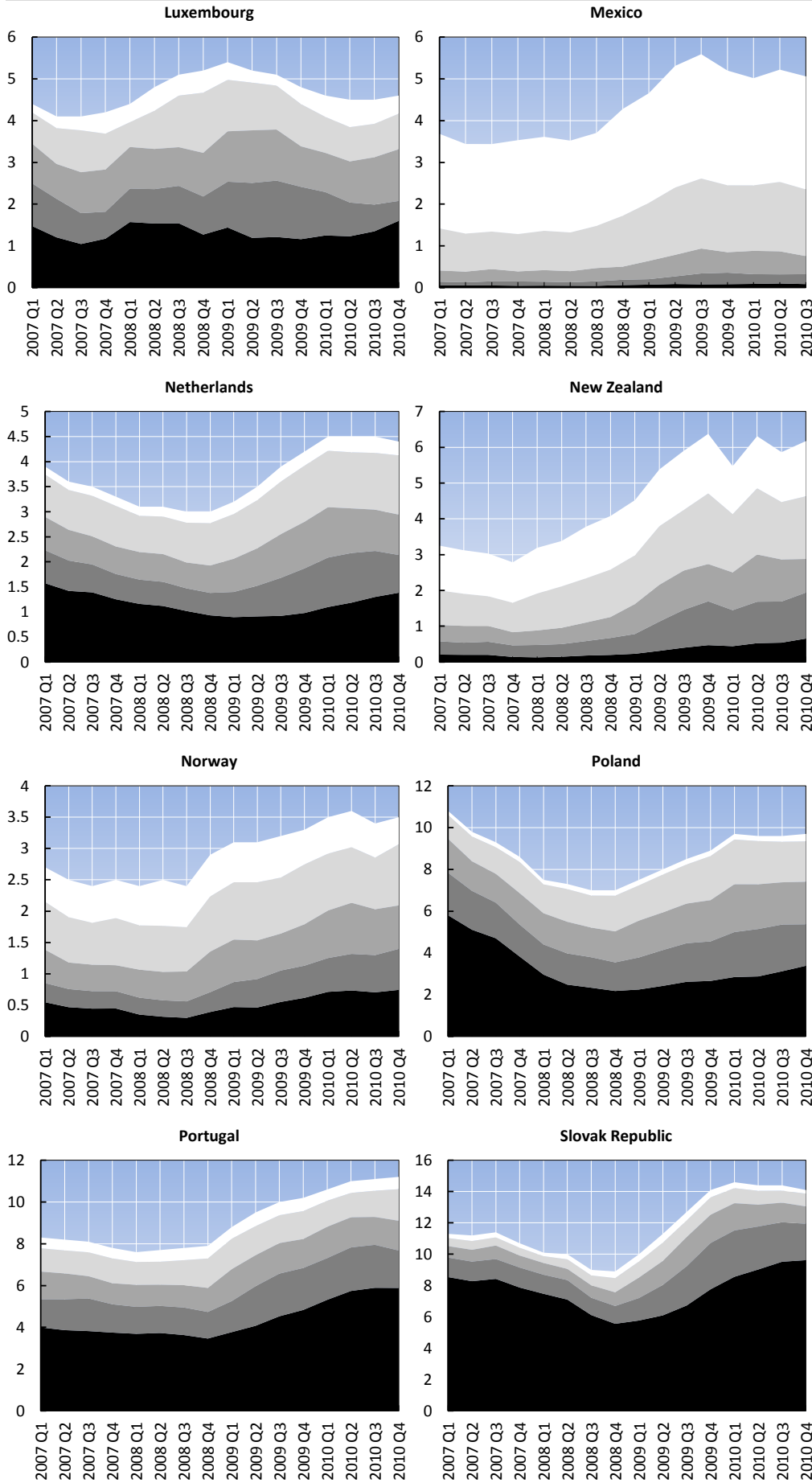
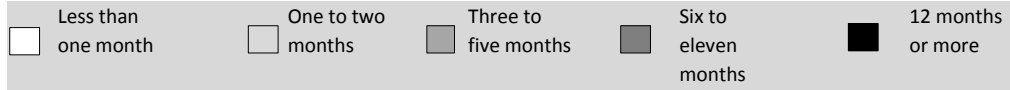
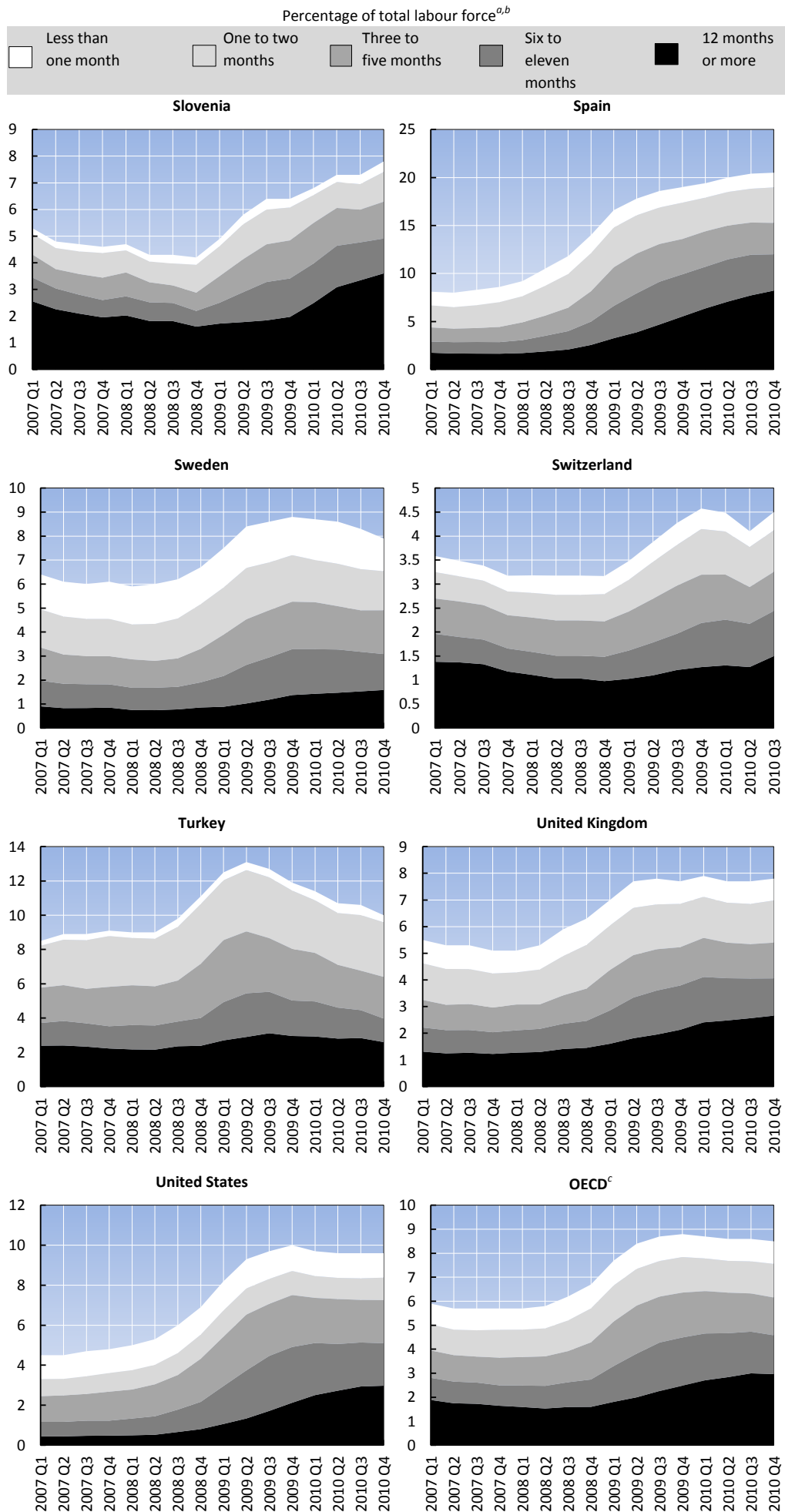


Figure 1.A1.3. Evolution of unemployment rates by duration
2007 Q4-2010 Q4 (Cont.)



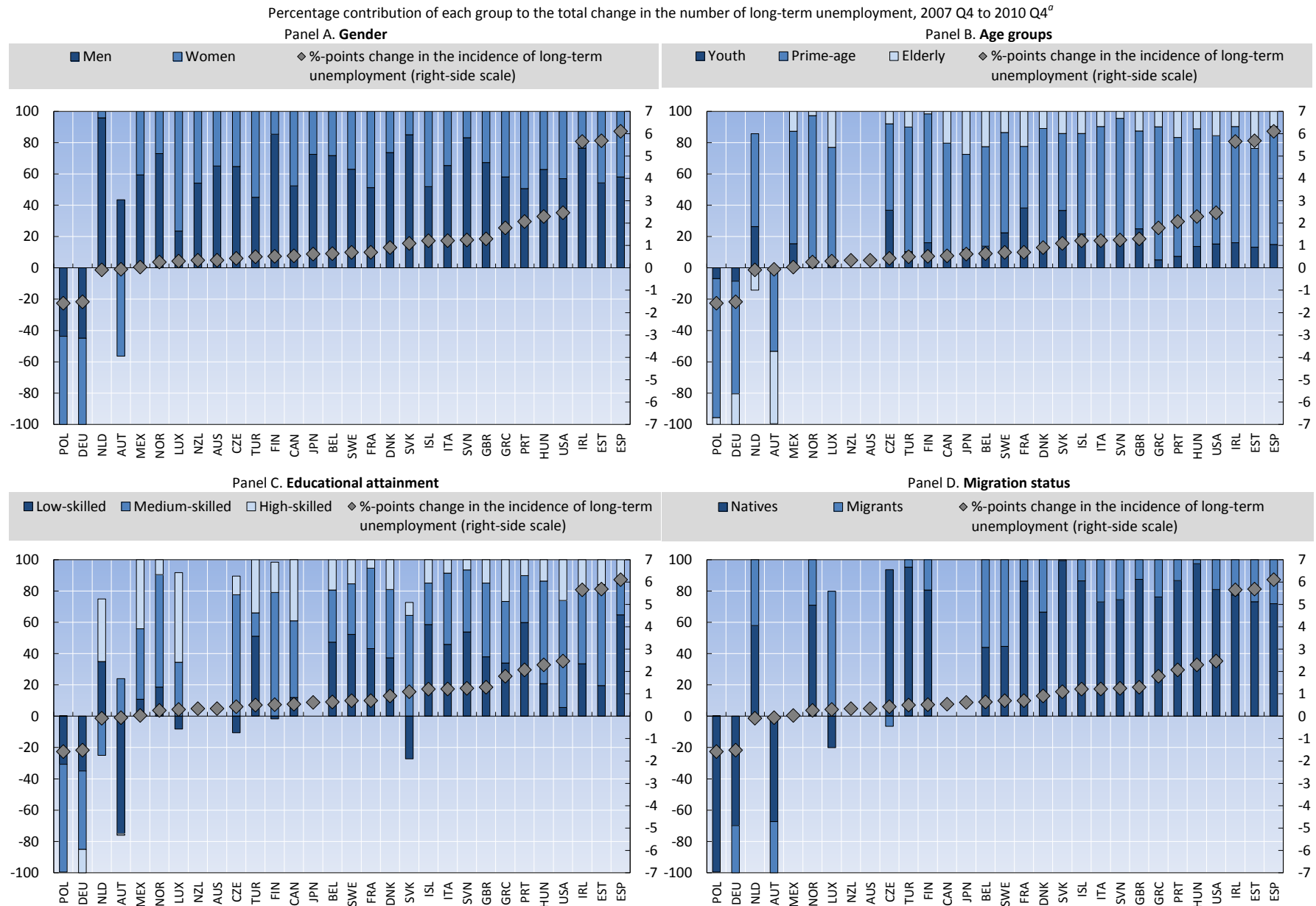
a) Series on unemployment by duration are not seasonally adjusted but are smoothed using three-quarter centered moving averages.

b) Unemployment duration less than one month refers to less than three months.

c) OECD is the weighted average of the countries shown (excluding Chile, Israel and Korea).

Source: OECD calculations based on *OECD Main Economic Indicators Database* for the unemployment rates and *OECD Labour Force Statistics Database* for the incidence of unemployment by duration.

Figure 1.A1.4. Recent changes in the incidence of long-term unemployment were uneven across workforce groups



a) Countries shown in ascending order of the percentage-points change in long-term unemployment as a percentage of the labour force.

Source: OECD calculations based on national Quarterly labour Force Surveys.



REFERENCES

OECD (2009b), "Addressing the Labour Market Challenges of the Economic Downturn: A Summary of Country Responses to the OECD-EC Questionnaire", OECD Publishing, Paris, www.oecd.org/employment/outlook.

OECD (2011a), *OECD Employment Outlook*, OECD, Publishing, Paris.

OECD (2011b), *OECD Economic Outlook No. 89*, OECD, OECD Publishing, Paris.

