

The Contribution of Local Partnerships to local skills strategies- Challenges & Opportunities in a rural context

Carmel Fox

Chief Executive

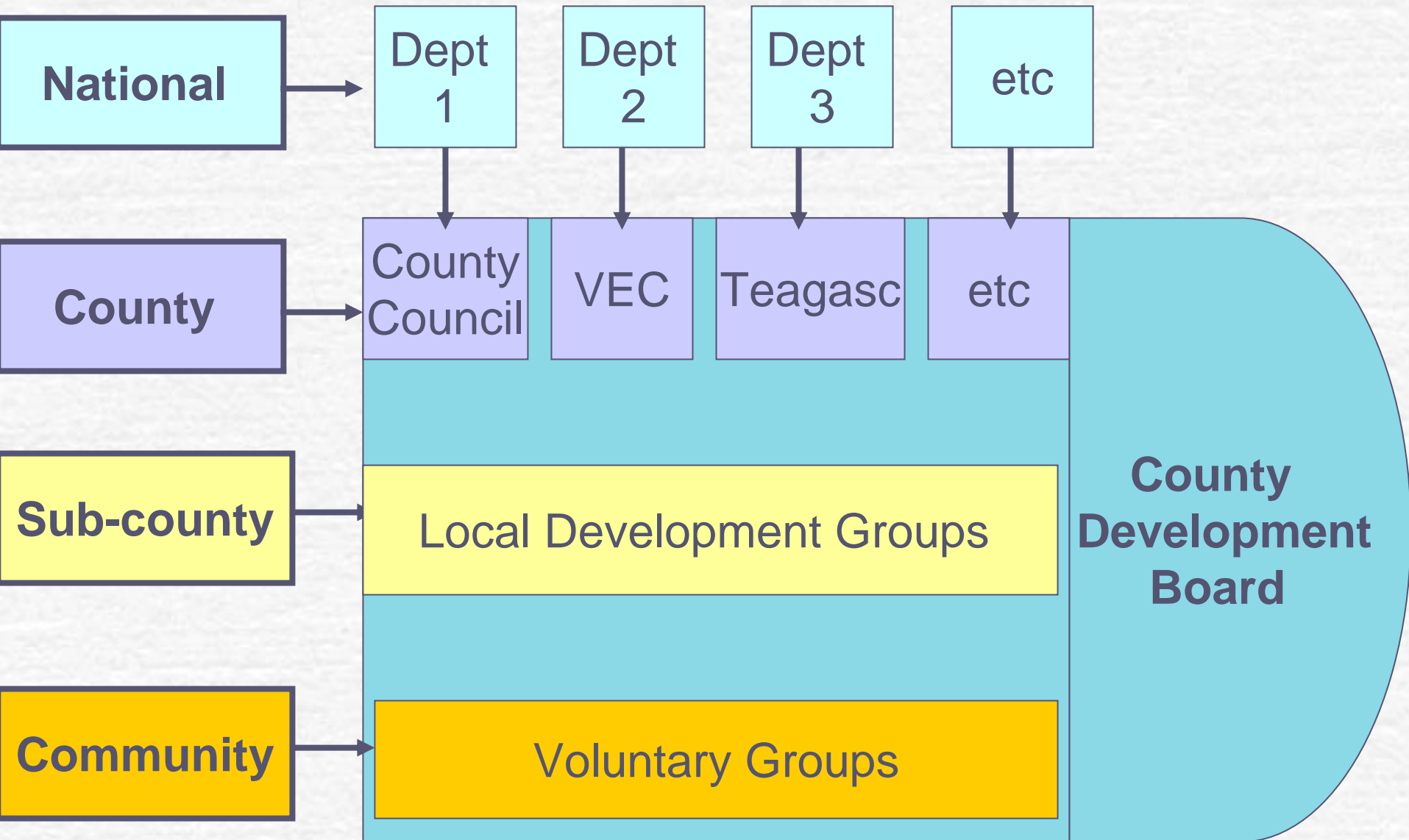
Ballyhoura Development



Structure of Presentation

- Ballyhoura Country - Area Profile
- Irish Governance Context
- Ballyhoura Development – organisation structure & operation
- Contribution to local skills strategies
- Conclusion

Irish Governance Context



Ballyhoura Development

- Established 1989
- Manage **rural development** and **social inclusion**
Area and Client Focussed Agent of Development

Operation Structures

- Company Limited by Guarantee; Charitable Status
- Partnership: Community, Social Partners, Public Bodies, Elected Representatives

Aim

- Create and enhance opportunities by working in partnership and fostering participation, thereby making possible the enjoyment of quality life chances and economic security

Challenge

- Diversification of the Rural Economy
- Improve Quality of Life

Overall Development Strategy

- Partnership and participation
 - Relevant partners
 - Structure
- Strategic Planning/Consultation, Ownership
 - Innovation, Initiatives
 - Pilots
- Animation and Capacity Building
 - Tailored Targeted Response
 - Lower Access Threshold
 - Need for 'ring-fenced' budget
- Training
- Research



LEADER+

Enhancing Disability Services

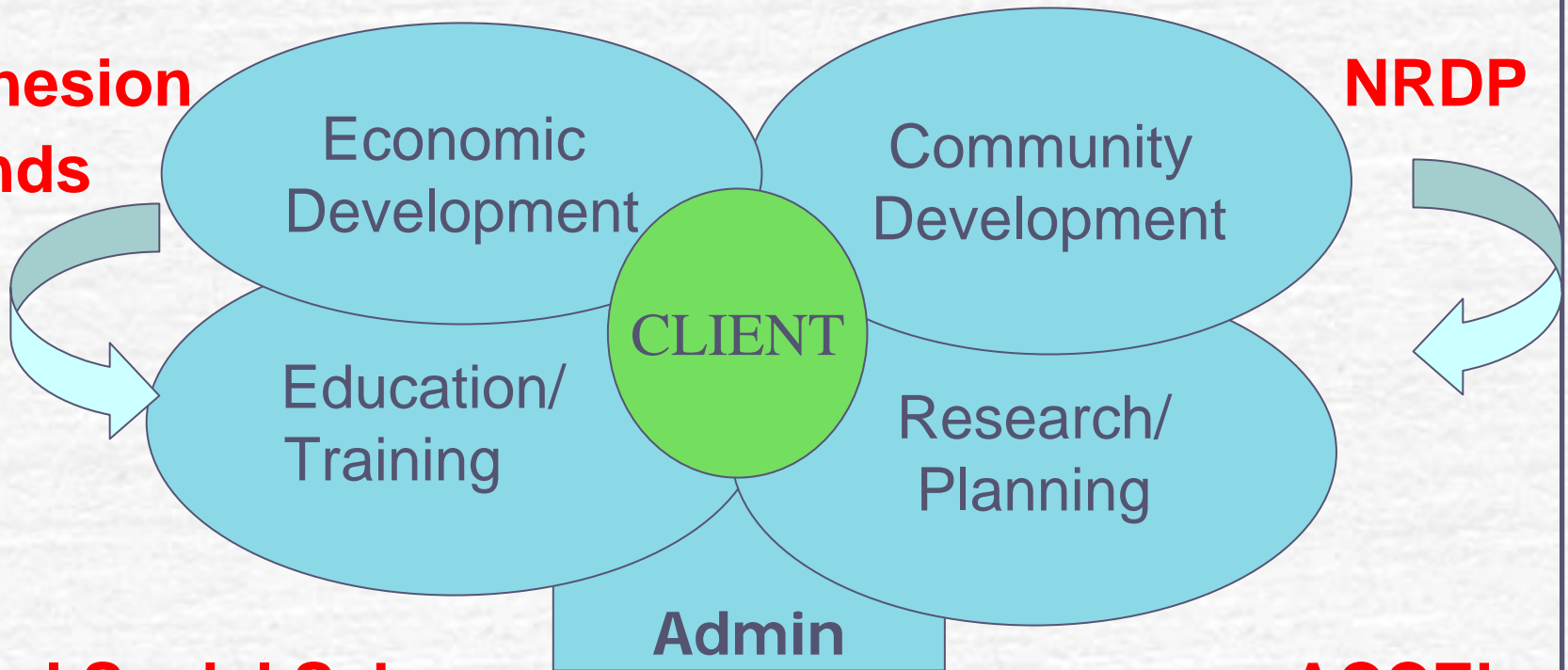
Womens' Progression Prog

Integration Prog

Local Development Social Inclusion Programme

**Cohesion
Funds**

NRDP



Rural Social Scheme

ACCEL

CLAR

Millennium Partnership

Article 6



EUROPEAN UNION STRUCTURAL FUNDS



NATIONAL DEVELOPMENT PLAN



Funding Programmes

Clients - Who

Individuals: Unemployed/underemployed, women, young people, Travellers, Older people, Lone parents, persons with disabilities/mental ill health, Farm households, migrant workers, Youth/students

Communities at all stages of development
Community Groups/Interest Groups

Businesses: All sectors, Start Up to established
Information/Advice/Referrals/Finance

Delivering Local Development

Economic Development	Community Development
<p>Enterprise</p> <ul style="list-style-type: none">• SME Enterprise• Rural Tourism• Economic Infrastructure <p>Rural Employment Service</p> <ul style="list-style-type: none">• One to one facilitation• Clinics• Jobs Clubs• Education/Training• Employer Liaison	<p>Broad</p> <ul style="list-style-type: none">• Village & Rural Renewal• Enhance Built Heritage & Landscape• Cultural Activities & Identity <p>Social Inclusion</p> <ul style="list-style-type: none">• Outreach Supports• Inclusive Support Structures & Networks• Social & Community Services
Community Socio-Economic Planning	

Education/Training

Research

Changing Environment

- Irish economy is in transition from being based on agriculture and manufacturing towards an increasingly service driven economy, where rural dwellers do not share adequately in the 'Celtic Tiger'
- Social Inclusion Focus in National Development Plan
- Re-structuring of Local Governance
- County Development Board Strategies to facilitate co-ordination

Contribution to Local Skills Strategies

Opportunities

- ☞ Rural Dwellers distant from labour market
 - Unemployed
 - Low income
 - Long-term sick
- ☞ Resources
 - LDSIP
 - Partners
 - Pilot funds
 - Supported employment options

Challenges

- ☞ Changing Policy Environment
- ☞ Transport & Childcare
- ☞ Targeted needs identification
- ☞ Identification of gaps
- ☞ Innovating, partnership responses & resources
- ☞ Animating participation
- ☞ Evaluation of implementation
- ☞ Influencing Policy

Example 1: Skills Training for Lone Parents

☞ **Client:** Lone Parents

☞ **Action**

- Outreached IT Training (FAS)
- Personal Development Training (LDSIP)
- Childcare Supported (LDSIP)

☞ **Result:** FAS inclusion of personal development training with targeted skills training

Example 2: Low income Farm Families

- ☞ **Client:** Farm Families
- ☞ **Action:** One to one support methodology
 - Adult Career Guidance
 - Training
 - Job Search Skills
 - Linkage to employment or enterprise
- ☞ **Result:**
 - Rural Enterprise & Employment Service
 - Method Adopted by Local Development Partnerships

Example 3: Transition to Employment Pilot

Client: Persons with mental ill health

Action

- Training 2 mornings /week, 26 weeks
 - Personal Development
 - Job Search skills
- One to one support
- Childcare supported
- Transport supported

Result:

- Referral to non-medical model by HSE
- Pobal co-ordinating two focused pilots

Conclusion

Key Role of Local Partnerships

- Needs identification
- Opportunities Identification
- Brokerage of resources
- Targeted outreach
- Lowering access threshold
- One-to-one support through progression

Conclusion

Make rural areas “more attractive places to live, invest and work, promoting knowledge and innovation for growth and creating more and better jobs”^[1] and vibrant rural communities

^[1] Proposal, European Commission (2005/0129), Brussels, 5th July 2005
“Community Strategic Guidelines for Rural Development”