

# Shipbuilding Policy

---

Ministry of Land, Infrastructure,  
Transport and Tourism (MLIT),  
JAPAN

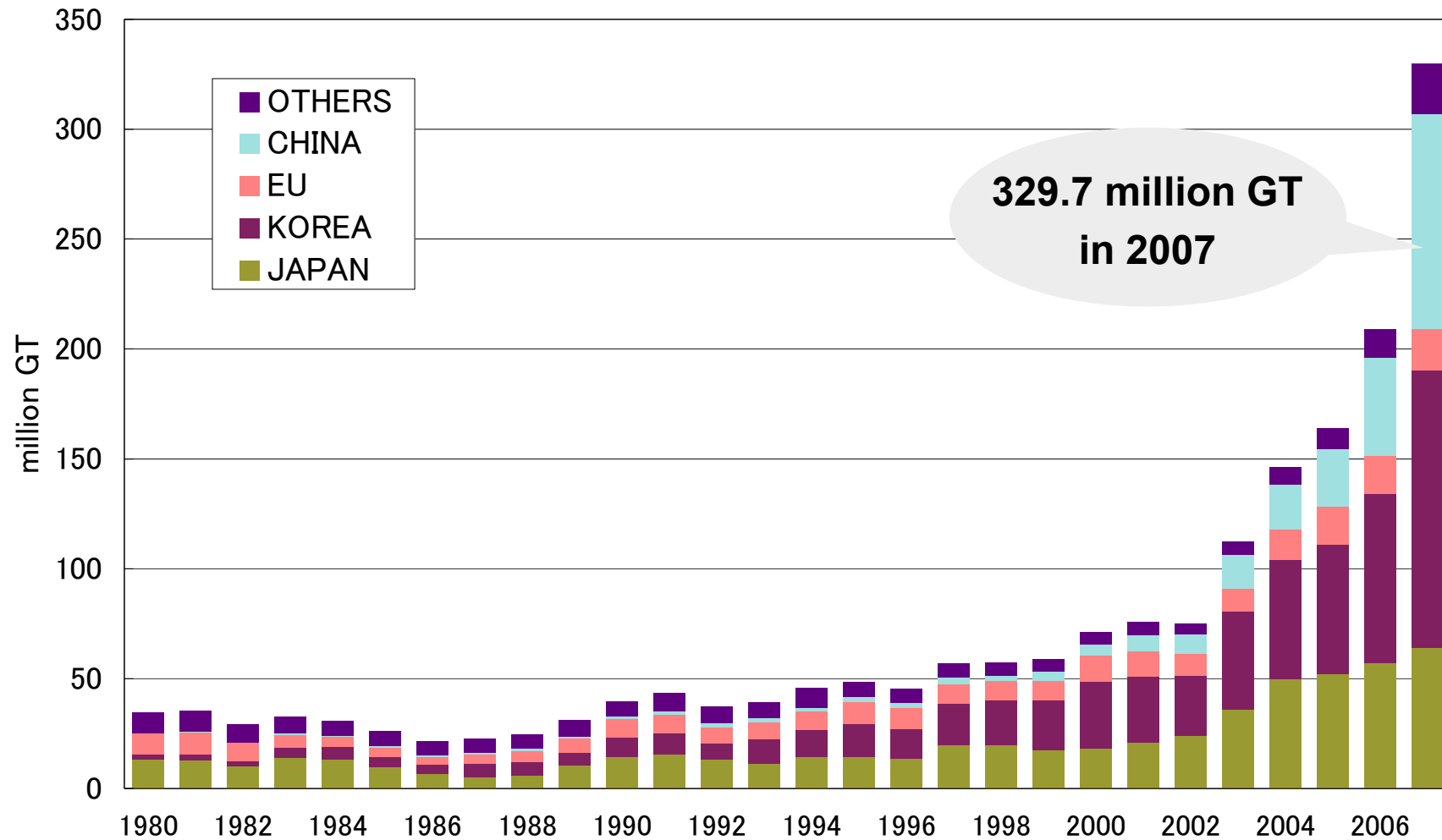
---

**PRESENT SITUATION & ISSUES**

**COUNTERMEASURES**

**DESIRABLE SHIPBUILDING POLICY**

## Orderbooks



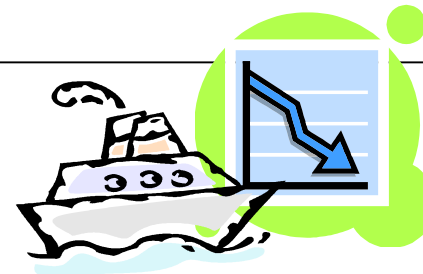
Source: Lloyd's Register

**Shipyards had received many new orders, because of the brisk maritime trades.**

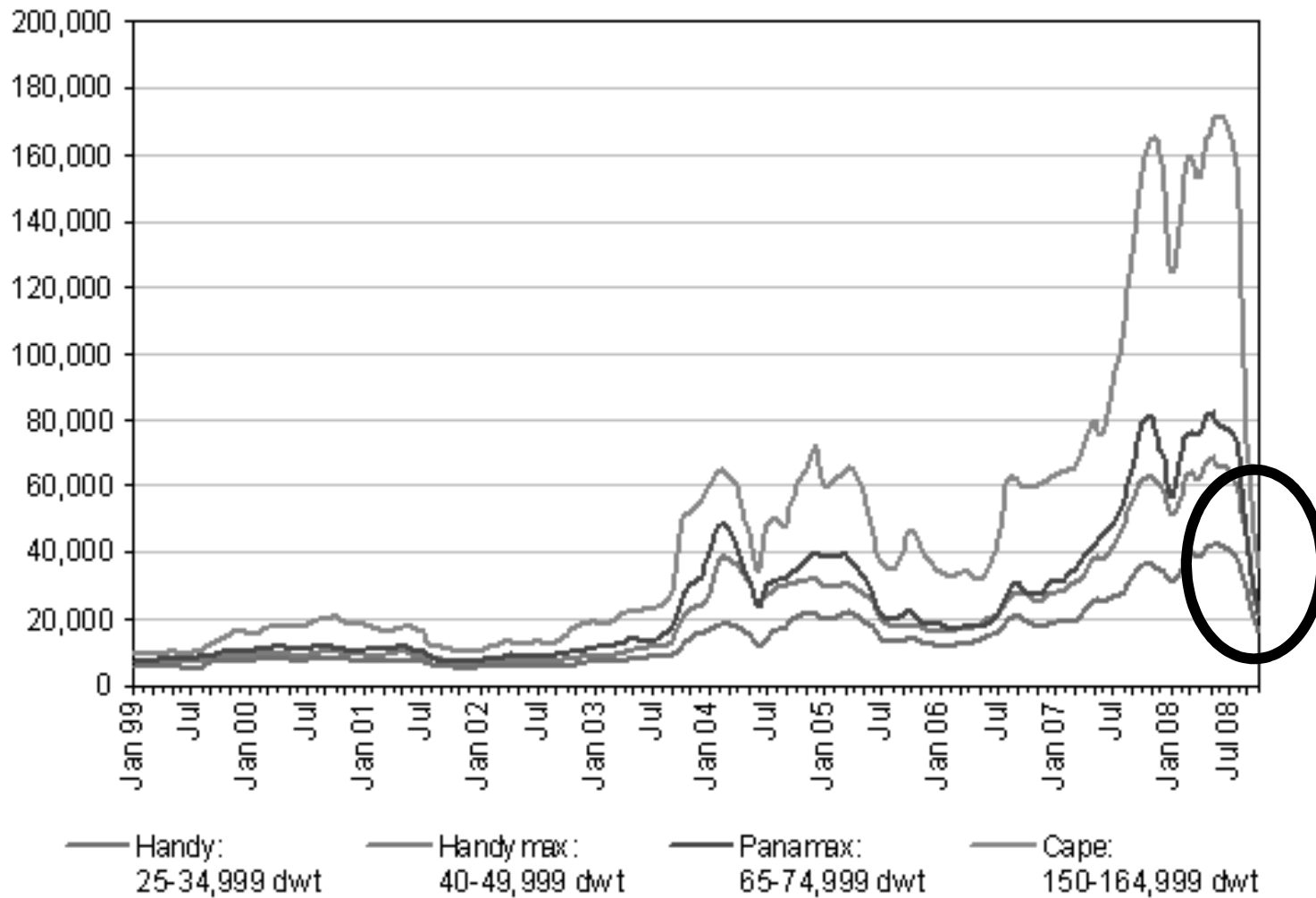
## But, now, the situation has changed.

### Most of all new building orders have stopped...

- Rocketing steel prices
- Financial crisis triggered by Subprime Loan Problem
- Contraction of the sea trade market

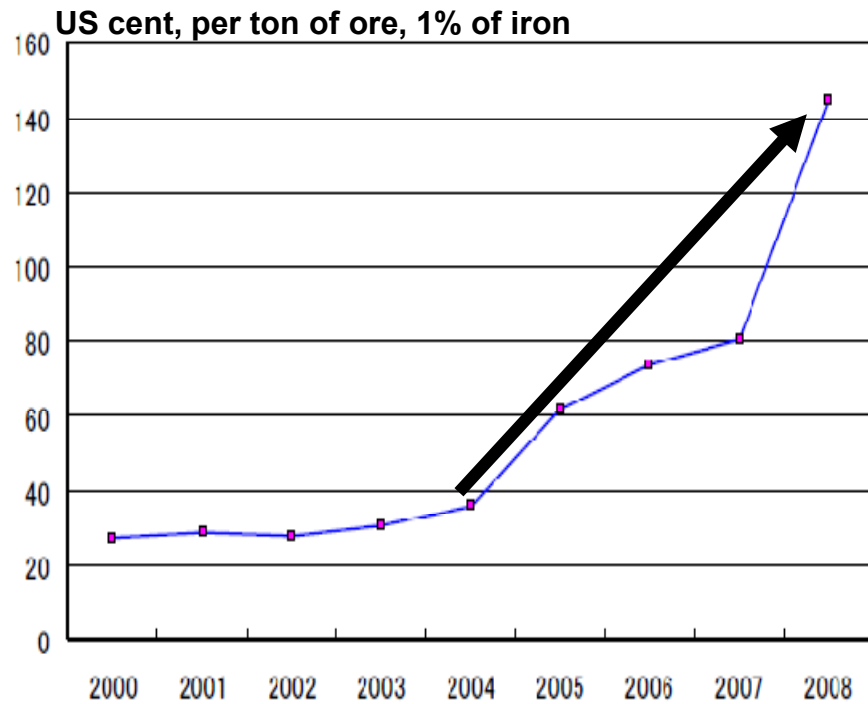


## Time Charter Rates for Bulk Carriers (\$/day)



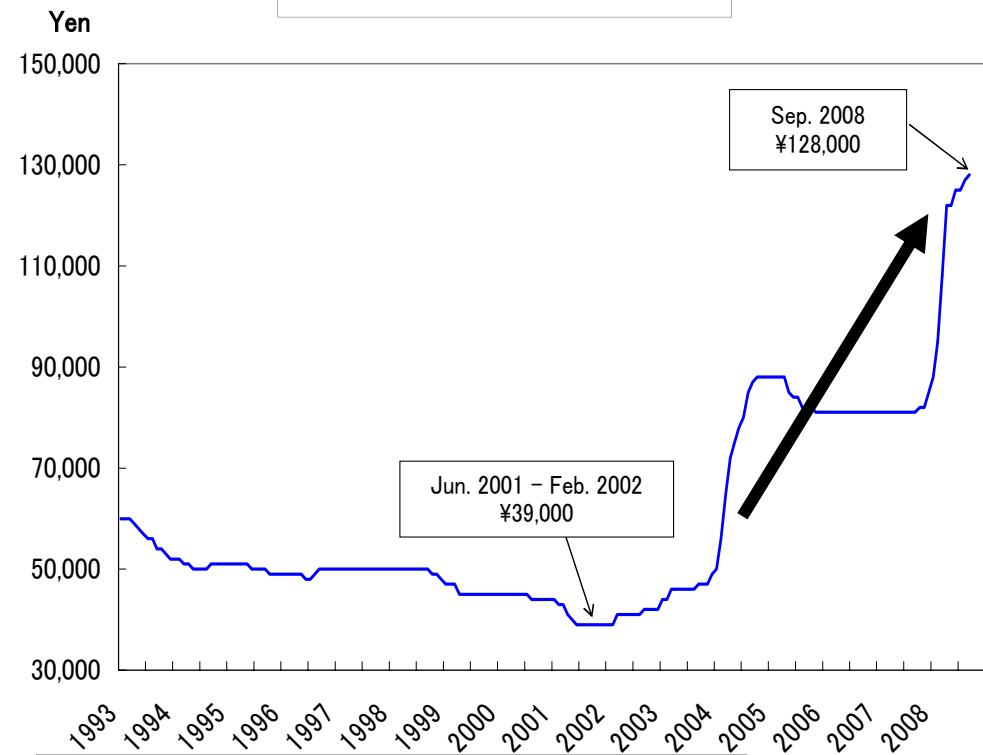
Marine net

## Transitions of Iron-ore prices



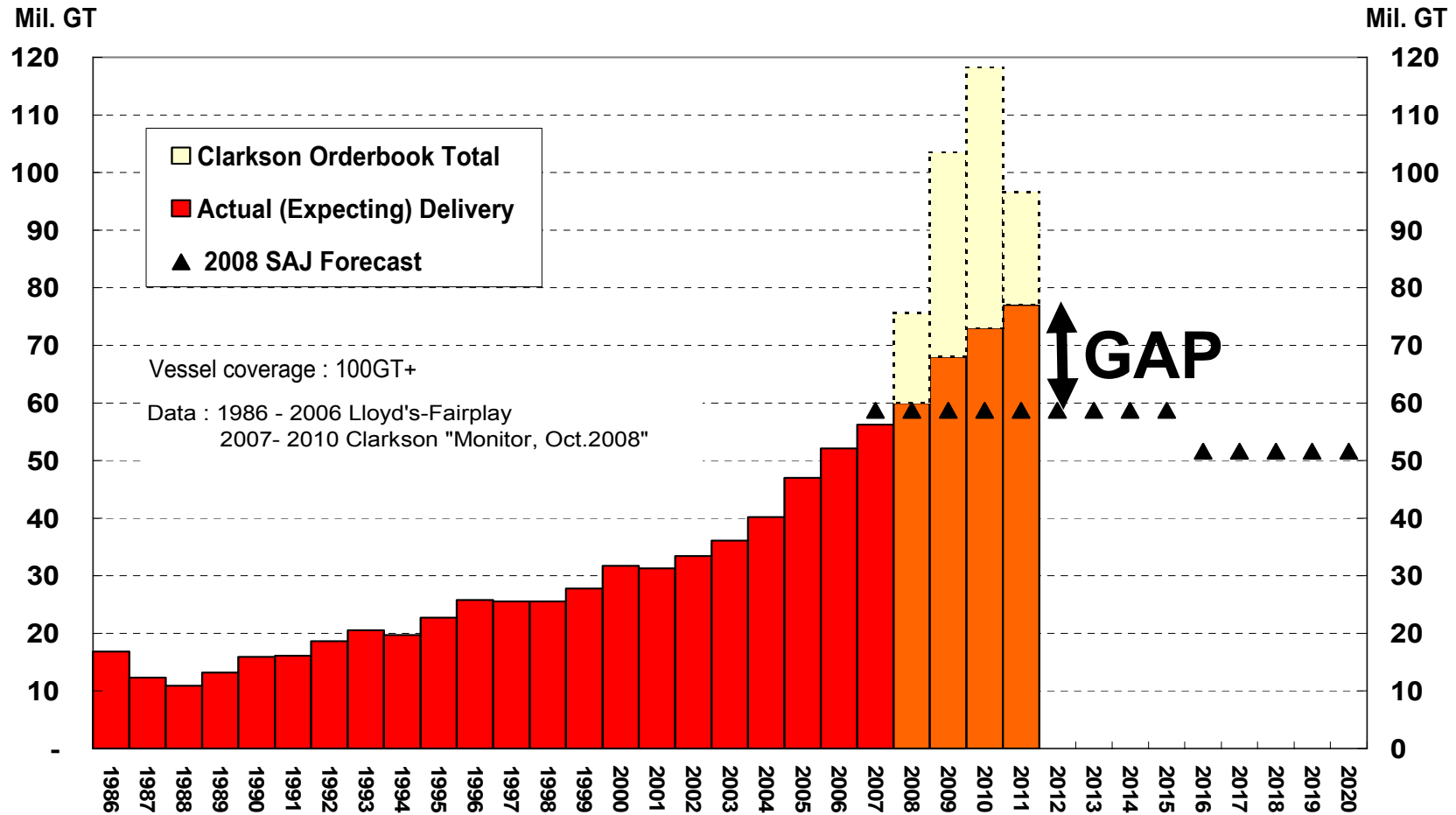
Iron ore outlook (AME), Rio Tinto HP

## The Transition of Steel Prices



Japan Metal Daily (Yen/ton)

## Scheduled Delivery vs SAJ 2008 Forecast



---

**PRESENT SITUATION & ISSUES**

**COUNTERMEASURES**

**DESIRABLE SHIPBUILDING POLICY**

**“SUMMIT ON FINANCIAL MARKETS AND THE WORLD ECONOMY”  
WASHINGTON DECLARATION (15, Nov. 2008)**

**“Rejecting protectionism”**



**Within the next 12 months, we will refrain from raising new barriers to investment or to trade in goods and services, imposing new export restrictions, or implementing World Trade Organization (WTO) inconsistent measures to stimulate exports.**

**We shall strive to reach agreement this year on modalities that leads to a successful conclusion to the WTO’s Doha Development Agenda with an ambitious and balanced outcome.**

**“SUMMIT ON FINANCIAL MARKETS AND THE WORLD ECONOMY”  
WASHINGTON DECLARATION (15, Nov. 2008)**

**“Common Principles for Reform of Financial Markets”**



**Intensified international cooperation among regulators and strengthening of international standards, where necessary, and their consistent implementation is necessary to protect against adverse cross-border, regional and global developments affecting international financial stability.**

**Regulators must ensure that their actions support market discipline, avoid potentially adverse impacts on other countries, including regulatory arbitrage, and support competition, dynamism and innovation in the marketplace.**

**“LIMA APEC LEADERS’ STATEMENT ON THE GLOBAL ECONOMY”  
(22, Nov. 2008)**

## **“Welcome the Washington Declaration”**



**We strongly support the Washington Declaration and will refrain within the next 12 months from raising new barriers to investment or to trade in goods and services, imposing new export restrictions, or implementing World Trade Organization (WTO) inconsistent measures in all areas, including those that stimulate exports. We seek an ambitious and balanced conclusion to the Doha Development Agenda negotiations to provide the basis for our economies to grow and prosper.**

**PRESENT SITUATION & ISSUES**

**COUNTERMEASURES**

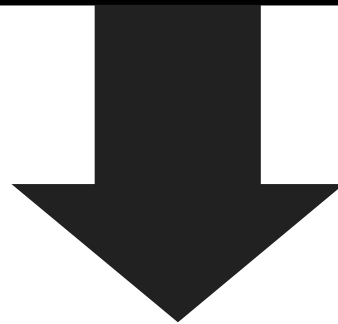
**DESIRABLE SHIPBUILDING POLICY**

**Avoiding Protectionist Measures**



**Early conclusion of  
OECD Shipbuilding Agreement**

**Stabilization of Material Market**



**New international initiative to prevent from fluctuating of steel Market and to promote antitrust policy**

**Thank you for your kind attention.**