

OECD Composite Leading Indicators signal slowdown for major OECD economies

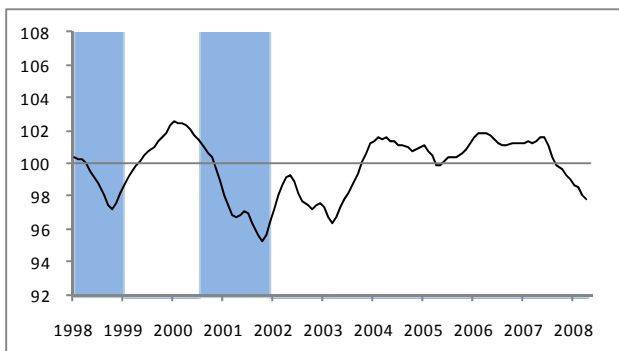
The latest composite leading indicators (CLIs) suggest that a slowdown in economic activity lies ahead in the OECD area. April 2008 data indicate a continued weakening outlook for all the major seven economies. The latest data for major OECD non-member economies point to a moderate downturn in China and a downturn in Brazil and India while continued expansion is ahead in Russia.

The CLI for the **OECD area** decreased by 0.2 point in April 2008 and was 3.5 points lower than in April 2007. The CLI for the **United States** fell by 0.3 point in April and it was 4.1 points lower than a year ago. The **Euro area's** CLI decreased by 0.5 point in April and stood 3.9 points lower than a year ago. In April, the CLI for **Japan** rose by 0.7 point, but it was 4.0 points lower than a year ago.

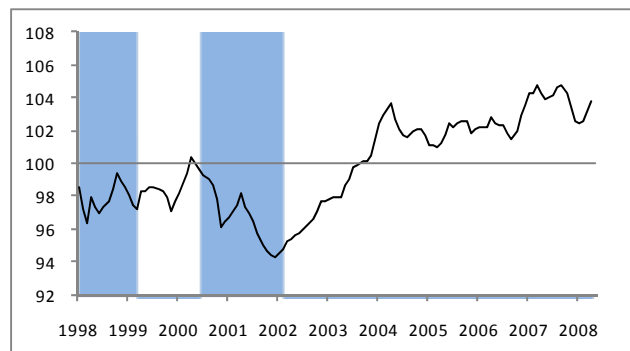
The CLI for the **United Kingdom** fell by 0.4 point in April 2008 and it was 2.9 points lower than a year ago. The CLI for **Canada** was unchanged in April but was 2.2 points lower than a year ago. For **France**, the CLI fell by 0.7 point in April and was 3.5 points lower than a year ago. The CLI for **Germany** decreased by 0.2 point in April and was 3.2 points lower than a year ago. For **Italy**, the CLI increased by 0.2 point in April but stood 4.1 points lower than a year ago.

The CLI for **China** was up by 0.5 point in April 2008 but stood 0.5 point lower than a year ago. The CLI for **India** fell by 0.7 point in March 2008 and was 3.5 points lower than in March 2007. The CLI for **Russia** rose by 1.0 point in April and its level was 3.0 points higher than a year ago. In April 2008 the CLI for **Brazil** was down by 1.5 point and was 3.7 points lower than a year ago.

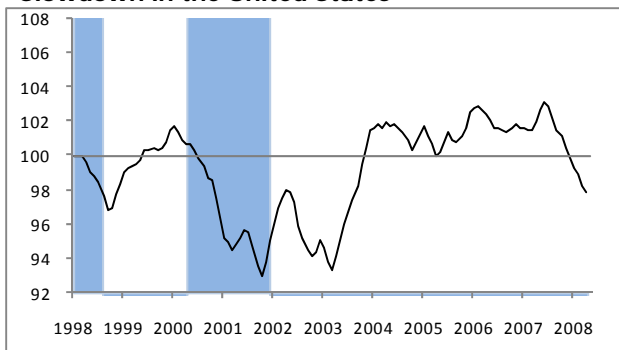
Slowdown in the OECD area



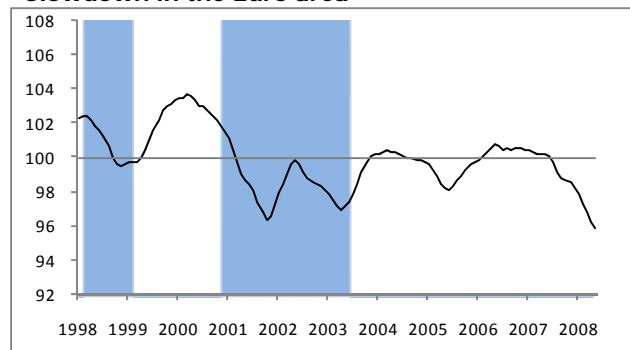
Moderate downturn in China



Slowdown in the United States

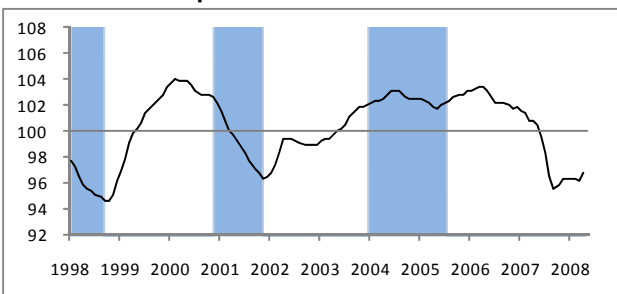


Slowdown in the Euro area

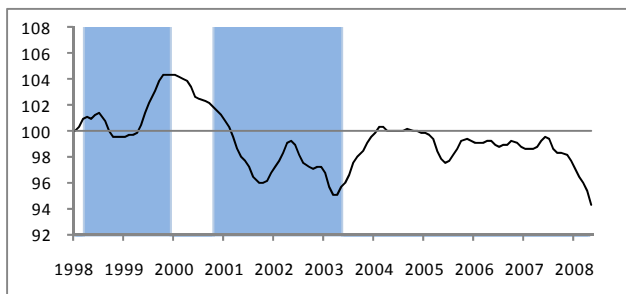


The above graphs show each countries growth cycle outlook based on the CLI which may signal turning points in economic activity approximately six months in advance. Shaded areas represent observed growth cycle downturns (measured from peak to trough) in the reference series economic activity).

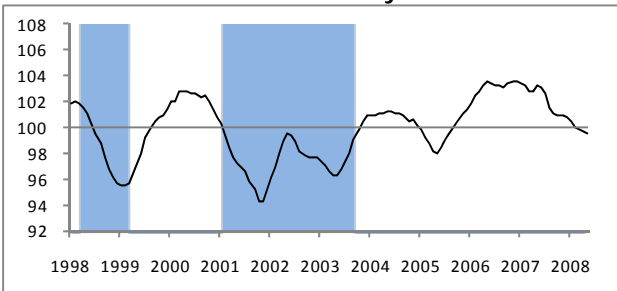
Slowdown in Japan



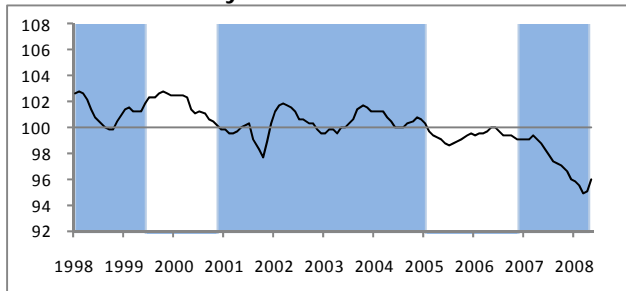
Slowdown in France



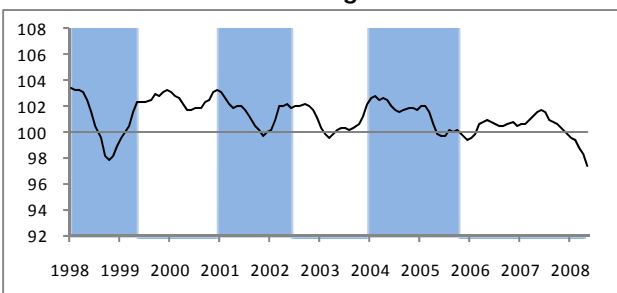
Moderate slowdown in Germany



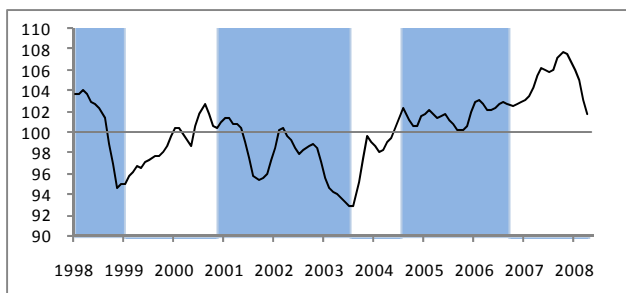
Slowdown in Italy



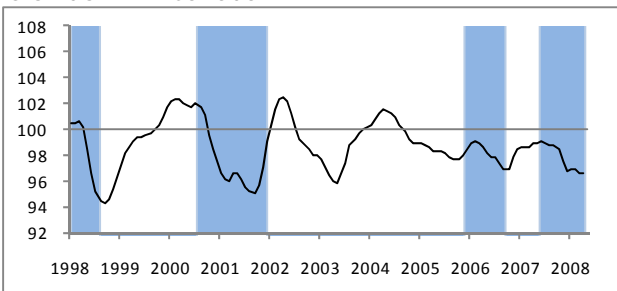
Slowdown in the United Kingdom



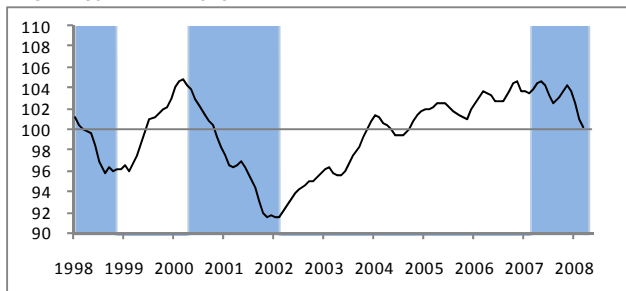
Downturn in Brazil



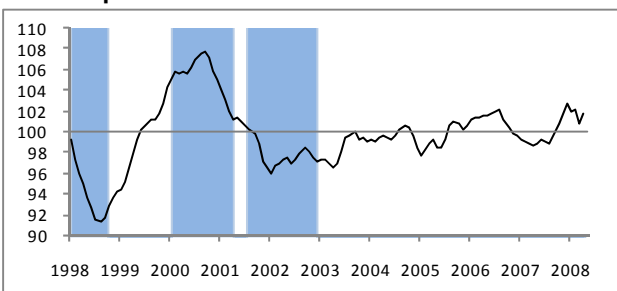
Slowdown in Canada



Downturn in India



Slow expansion in Russia



The above graphs show each countries' growth cycle outlook based on the CLI which may signal turning points in economic activity approximately six months in advance. Shaded areas represent observed growth cycle downturns (measured from peak to trough) in the reference series (economic activity).

Table 1: Composite Leading Indicators

	Ratio to trend, amplitude adjusted					Change from previous month					Year on Year change (points)	Growth cycle outlook**
	(long term average = 100)					(points)						
	2007	2008				2007	2008				Latest month	
Dec	Jan	Feb	Mar	Apr	Dec	Jan	Feb	Mar	Apr			
OECD Area	99.1	98.8	98.6	98.1	97.9	-0.3	-0.3	-0.2	-0.5	-0.2	-3.5	slowdown
Euro Area	98.2	97.9	97.3	96.7	96.3	-0.3	-0.3	-0.5	-0.6	-0.5	-3.9	slowdown
Major Five Asia*	102.0	101.9	101.7	101.8	102.3	-0.4	-0.1	-0.1	0.1	0.4	-1.7	downturn
Major Seven	98.9	98.6	98.3	97.7	97.6	-0.4	-0.4	-0.3	-0.5	-0.1	-3.8	slowdown
Canada	96.8	96.9	96.9	96.7	96.7	-0.7	0.1	0.0	-0.2	0.0	-2.2	slowdown
France	97.7	97.2	96.5	96.0	95.3	-0.5	-0.5	-0.7	-0.5	-0.7	-3.5	slowdown
Japan	96.4	96.3	96.3	96.1	96.9	0.0	-0.1	0.0	-0.2	0.7	-4.0	slowdown
Germany	100.8	100.6	100.1	99.9	99.7	-0.2	-0.2	-0.5	-0.2	-0.2	-3.2	moderate slowdown
Italy	96.0	95.8	95.6	94.9	95.0	-0.6	-0.2	-0.3	-0.7	0.2	-4.1	slowdown
United Kingdom	99.9	99.5	99.4	98.7	98.3	-0.3	-0.4	-0.1	-0.7	-0.4	-2.9	slowdown
United States	99.8	99.3	98.9	98.2	97.9	-0.6	-0.6	-0.3	-0.7	-0.3	-4.1	slowdown
Brazil	106.8	105.9	105.1	103.2	101.7	-0.7	-0.9	-0.9	-1.9	-1.5	-3.7	downturn
China	102.6	102.5	102.6	103.3	103.8	-0.8	-0.1	0.1	0.6	0.5	-0.5	moderate downturn
India	103.6	102.5	101.0	100.3		-0.6	-1.1	-1.5	-0.7		-3.5	downturn
Russia	102.8	102.0	102.3	100.8	101.8	1.0	-0.8	0.2	-1.4	1.0	3.0	slow expansion

* China, India, Indonesia, Japan and Korea.

** Growth cycle phases of the CLI are defined as follows: expansion (increase above 100), downturn (decrease above 100), slowdown (decrease below 100), recovery (increase below 100). CLI data for 29 OECD member countries and 6 OECD Non-member economies available at: http://stats.oecd.org/wbos/default.aspx?datasetcode=MEI_CLI

Table 2: Historical Performance of CLI and Recent Cyclical Turning Points in the Reference Series

	CLI Historical Performance				Recent confirmed Turning Point dates in the reference series					
	Lead (+) / Lag (-) at all turning points				Dates marked with (P) are provisional turning points					
	start year	median	mean	st. dev.	peak	trough	peak	trough	peak	trough
OECD Area	1965	5	5	3.8	Aug 2000	Dec 2001				
Euro Area	1965	6	7	8.4	Dec 2000			May 2003 P		
Major Five Asia*	1995	4	6	6.3	Aug 2000	Feb 2002			Jun 2007 P	
Major Seven	1965	5	5	4.5	Dec 2000	Nov 2001				
Canada	1966	6	6	8.0	Aug 2000	Dec 2001	Dec 2005	Sep 2006 P	Jun 2007 P	
France	1967	7	7	5.7	Nov 2000	May 2003				
Japan	1959	8	7	5.4	Dec 2000	Nov 2001	Jan 2004	Jul 2005 P		
Germany	1961	3	4	4.3	Feb 2001	Sep 2003 P				
Italy	1965	8	8	10.7	Dec 2000			Jan 2005 P	Dec 2006 P	
United Kingdom	1972	7	7	5.0	Jan 2001	Jun 2002	Jan 2004 P	Oct 2005 P		
United States	1955	6	7	3.6	May 2000	Dec 2001				
Brazil	1979	4	5	4.5	Dec 2000	Jul 2003	Aug 2004	Sep 2006 P		
China	1983	4	6	6.5	Jul 2000	Feb 2002				
India	1995	1	1	0.8	May 2000	Feb 2002			Mar 2007 P	
Russia	1994	10	7	9.3	Aug 2001	Dec 2002				

* China, India, Indonesia, Japan and Korea

P= provisional (see Methodological Notes on next page)

Methodological Notes

The OECD CLI is designed to provide early signals of turning points (peaks and troughs) between upswings and downswings in the growth cycle of economic activity. The CLI is an instrument of analysis that has to be used carefully. Whilst it has a long-term average = 100, the CLI provides qualitative information on short-term economic movements rather than quantitative measures. Therefore, the main message of CLI movements over time is the direction up or down in the growth cycle where the cyclical phases are defined as follows: expansion – CLI increasing and above 100; downturn – CLI decreasing but above 100; slowdown – CLI decreasing and below 100; recovery – CLI increasing but below 100.

The CLIs are aggregated time series which summarise information contained in a number of key short-term economic indicators known to be linked to GDP. They have been compiled using a modified version of the method developed by the US National Bureau of Economic Research. The CLI system comprises a set of component series selected from a wide range of economic indicators all sharing the common property of indicating swings in future economic activity (224 series are used in total, about 5-10 for each country).

Cyclical turning points are directly captured in the (amplitude adjusted) de-trended or ratio to trend form of the CLI as compiled from its de-trended component series. The monthly change (point) of the CLI provides information on short-term movements while the change (point) from the same month previous year supplies short-term trend information (Table 1). In practice, turning points in industrial production or GDP have been found about six months (on average) after the signals of turning points had been detected in the CLI. The historical performance (lead/lag at turning points) of the CLIs for individual countries and areas are set out in Table 2.

In general, the monthly index of industrial production covering all industry sectors (IIP) is used for the reference series as a proxy measure for quarterly GDP, because historical turning points of IIP have coincided with those of GDP for most OECD countries. Recent confirmed turning points in the reference series are set out in Table 2, where the most recent ones are noted provisional until they have been verified against those of the quarterly GDP. This is done in order to ensure consistency between the final reference chronology and GDP.

Access to time series data and methodological information for OECD *Composite Leading Indicators* (CLI), *standardised consumer* and *business confidence indicators*, *business tendency survey indicators* by sector and *consumer opinion survey indicators* is provided by the OECD Business Cycle Analysis Database available at the OECD web site at <http://stats.oecd.org/mei/default.asp?rev=2>

The **OECD-Total** covers the following 29 countries: Australia, Austria, Belgium, Canada, Czech Republic, Denmark, Finland, France, Germany, Greece, Hungary, Ireland, Italy, Japan, Korea, Luxembourg, Mexico, Netherlands, New Zealand, Norway, Poland, Portugal, Slovak Republic, Spain, Sweden, Switzerland, Turkey, United Kingdom, and United States.

The **G7 area** covers Canada, France, Germany, Italy, Japan, United Kingdom and United States.

The **Euro area** (only Euro area countries that are members of OECD) covers the following 12 countries: Austria, Belgium, Finland, France, Germany, Greece, Italy, Ireland, Luxembourg, the Netherlands, Portugal, and Spain.

The **Major Five Asia area** covers China, India, Indonesia, Japan and Korea.

This Press Release can be found on the OECD web page, see [OECD Internet Site](#)

Contacts:

For further information journalists are invited to contact the OECD's Media Relations Division on (33) 1 45 24 97 00 or e-mail news.contact@oecd.org.

For technical questions contact stat.contact@oecd.org

Next release: 11 July 2008