



Con.Solida and social co-operatives in Trentino





What is a “social co-operative”?

Law n. 381/1991

“The social co-operatives aim at pursuing the general interest of the community and at promoting the human development and the social integration of citizens through:

- a. the management of educational, health and social services (social coops type A);
- b. the accomplishment of the range of activities- agriculture, industry, trade or services – for the integration of the most disadvantaged people (social coops type B)”.



History of social co-operation in Trentino

The experiences on social co-operation started 25 years ago but the wide diffusion of social co-operatives developed after the approval of the national law nr. 381/1991 and regional law nr. 15/1993.



Con.Solida. Consortium

- Con.Solida. is a Consortium founded in **1986** by 11 members. The current network consists of **50** social co-operatives and of **2** societies which support the co-operative development (Promocoop; Cooperfidi).
- The social co-operatives are autonomous, independent and no profit subjects based on solidarity and democracy.
- The Consortium and social co-operatives aim at a social, economic and cultural development of the local community. They address to different territories according to the self-help principle and work on international co-operation.



Values

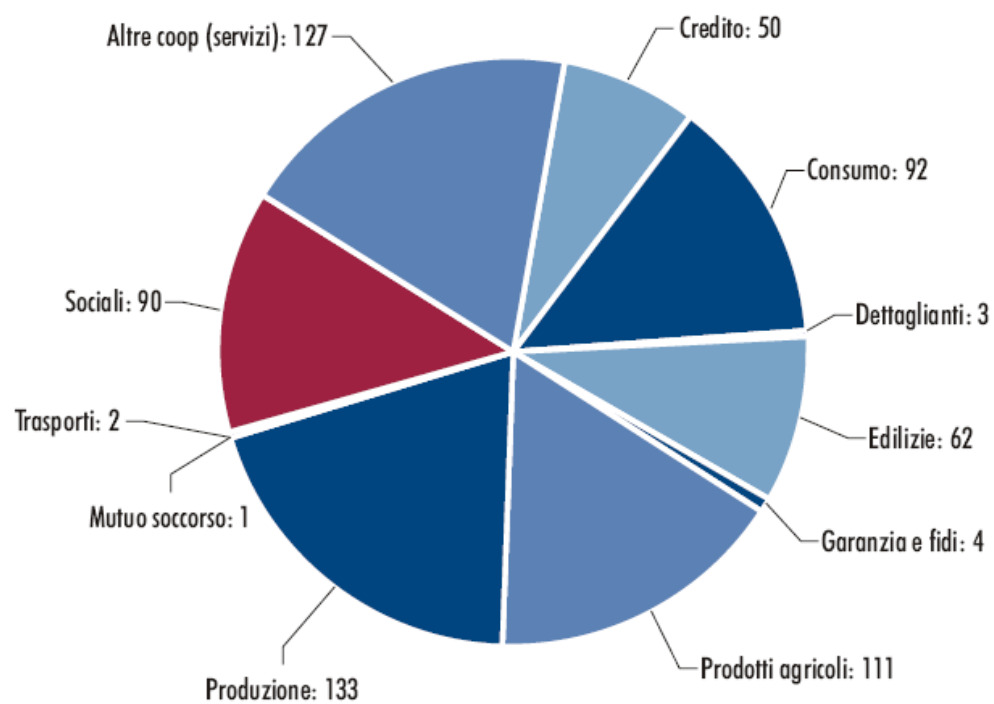
- Members based
- Solidarity
- Self-help
- Territoriality
- Honesty
- Diversity
- Democracy

Principles

- To be a community in the community for the community
- Collaboration
- Attention to diversity
- Dialogue
- Entrepreneurship
- Innovation
- Openness
- Subsidiarity

Co-operatives in Trentino

On 31 December 2005 there were **675 co-operatives**.





Social Co-operatives in Con.Solida.

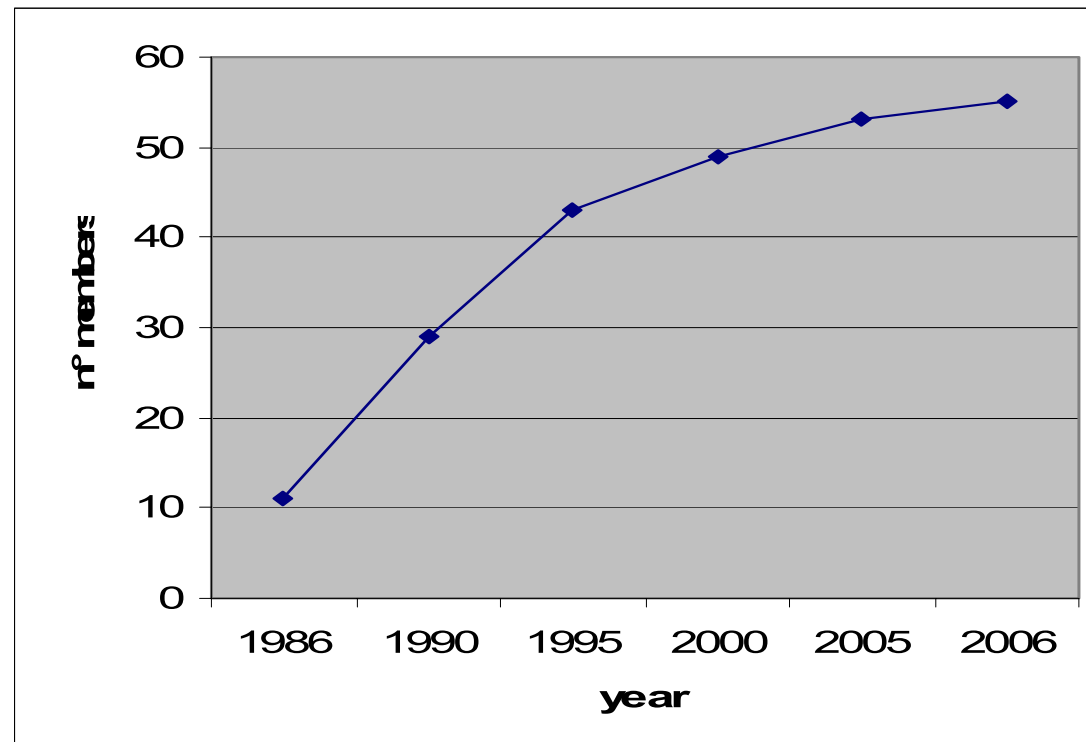
(8/11/2006)

- Social Co-operatives in Trentino: **90**
- Co-operatives associated to Con.Solida.: **53**
 - **37** type **A** – educational, health and social services management
 - **16** type **B** – range of activities for integration of disadvantage people (e.g. agriculture, industry, trade and services)
- Co-operative development societies : **2**



Membership increasing in Con.Solida.

(8/11/2006)





Policy

Con.Solida. has a political representative role in relation to:

- Public Institutions
- Local co-operative movement
- National co-operative movement



Con.Solida. representative role in relation to Public Institution

1. Social co-operation
2. Social inclusion
3. Childhood and youth
4. Self-help
5. Changing welfare



Con.Solida. representative role in relation to local co-operative movement

1. Federazione Trentina Della Cooperazione
2. Lssa
3. Cla
4. PROMOCOOP and COOPERFIDI



Con.Solida. representative role in relation to national co-operative movement

1. Federsolidarietà
2. CGM Consortium
3. CGM in Triveneto area
4. Comparison and collaboration with consortium in alpine space (Equal Monteseo)
5. Collaboration with co-operatives from Locride



Development

- **Subjects**
 - a. Company: network of enterprises
 - b. Verticality: supporting development and the system integration
 - c. Horizontality: considering the co-operatives closeness to the community

- **Instruments**
 - a. Areas
 - b. Sectors
 - c. Territory



Corporate development

- How to develop an identity awareness within the social enterprise point of view
 - Mission
 - Social contract and Guarantee Commission of social base
 - Alliances and social inclusion
 - Institutional value and different ways of corporate participation
- Structure
 - 9 employees and 76 collaborators, who are mainly involved in the Consortium network
 - Active involvement of the co-operatives (see Areas)



Verticality

Supporting development and the system integration

- Finance - consulting
- Brands (e.g. job inclusion in coops B)
- Knowledge and information collecting
- General Contracting
- Services for social enterprises
- Quality Certification UNI ENI ISO 9001: VISION 2000
- Privacy
- Services Chart
- Ethic and Social Responsibility Balance
- Administration
- Mission identification
- National Civil Service



Verticality 2

- Training
- Research: from organizations to development research
- Planning
- Research of new development topics (e.g. social agriculture, social tourism)
- Communication
- Fund-raising



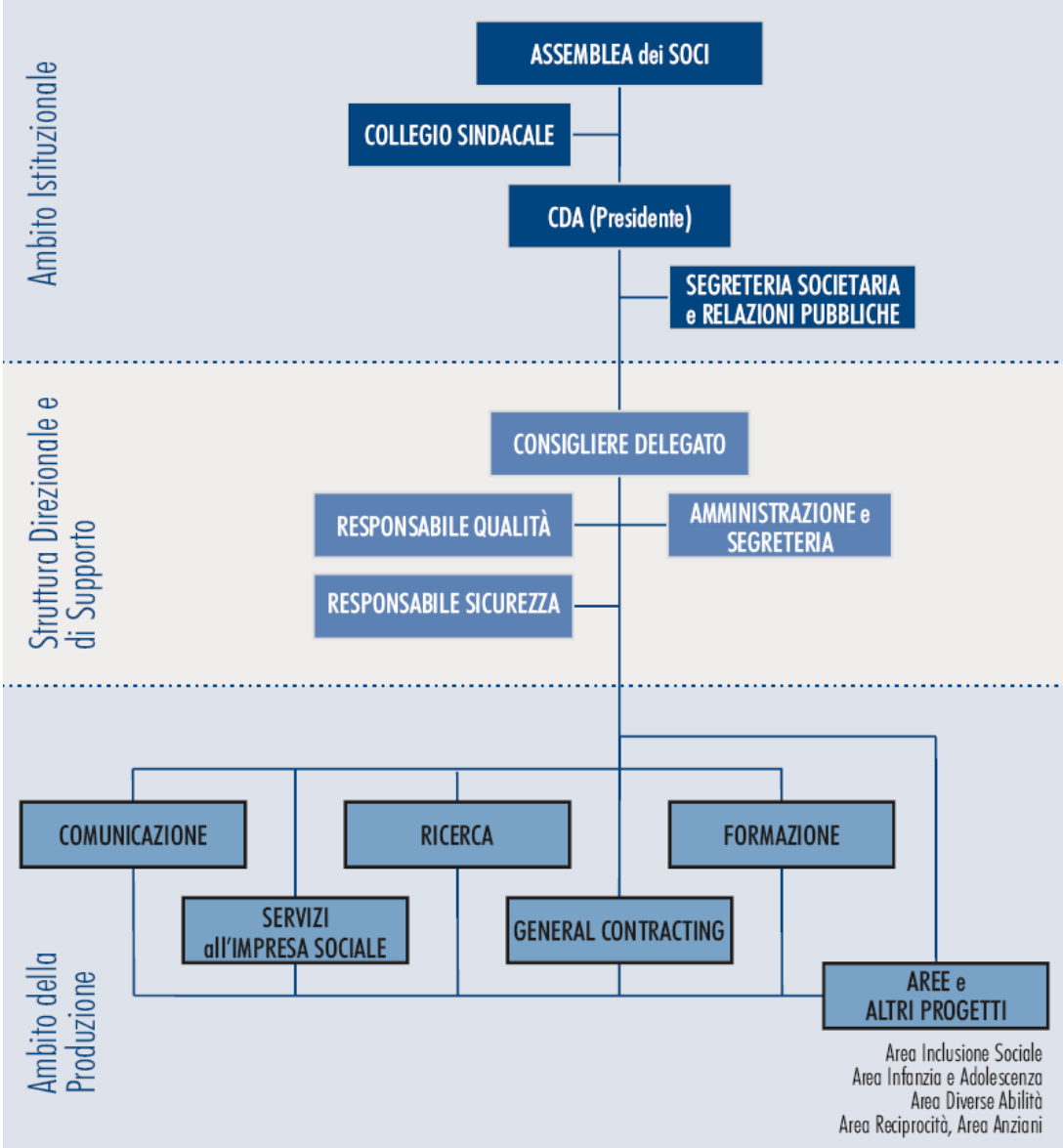
Horizontality

Considering the co-operatives closeness to the community

Focus on:

- People
 - reading and interpretation of needs
 - request aggregation
 - resources aggregation
 - multi-stakeholder
- Efficiency (network enterprise)
- Inter-organizational relationships
- Political and operative value

Con.Solida. Organization Chart





Areas

- Social inclusion
- Different skills
- Childhood and youth
- Elderly people
- Self-help
- Mental health



Sectors

- Training
- General contracting
- Research
- Services for social enterprises
- Communication



Training activities

- **For who?**
 - a. Disadvantage people
 - b. Staff of member Co-operatives
 - c. Staff of Consortium
- **What?**
 - a. Planning, management and realization of training services
 - b. Courses to improve professional skills
 - c. Actions to get an higher quality of the services offered by the Consortium and co-operatives
- **Why?**

The aim is to enhance the human resources involved in the co-operatives.



General Contracting

- Creation of networks
- Promotion of strategic participation as general contractor
- Creation of partnership
- Promotion of social marketing initiatives



Research

- Research on social co-operation in collaboration with local authorities and other organizations.
- Studies on specific social subjects to support operative actions.



Services for social enterprises

- Providing innovative and professional instruments to support creation and development of social co-operatives.



Communication

- Working out strategies and services to improve communication skills between the co-operatives and between local organisations
- Increasing visibility of co-operatives throughout their territories.
- Attending the Consortium public relations (e.g. institutional communication)
- Providing services to member co-operatives