

Social assistance

Sweden and Södertälje

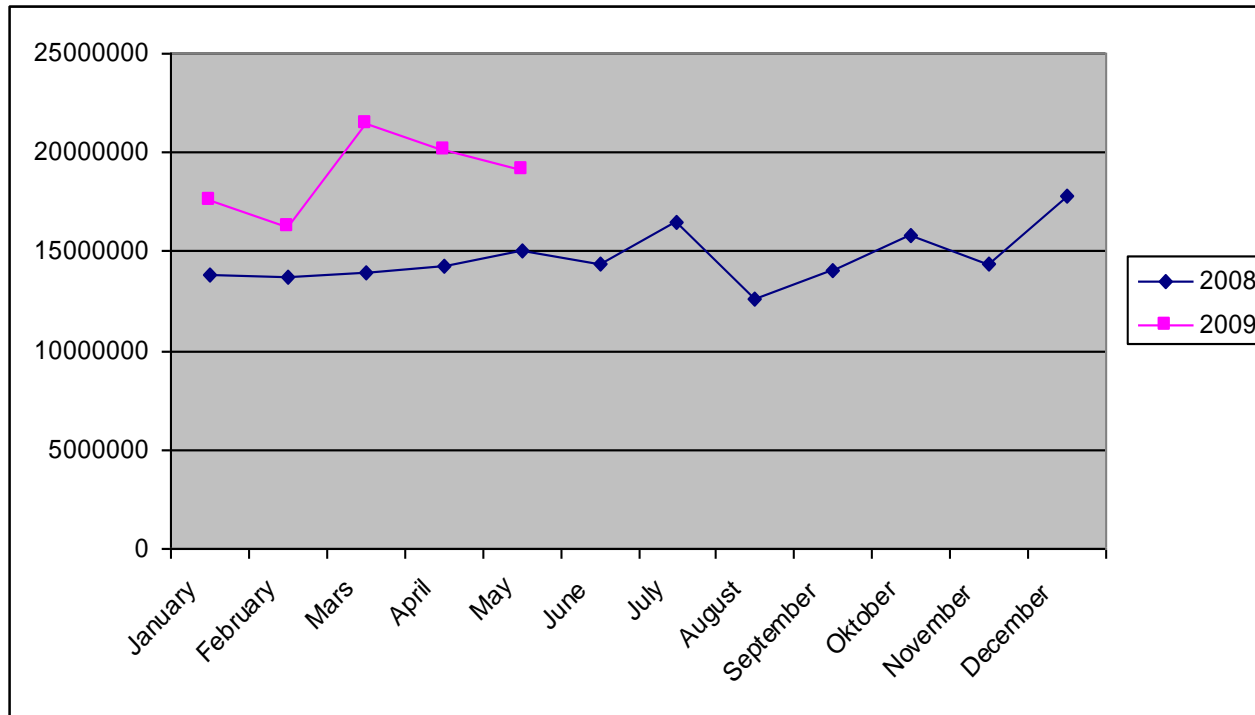
Social assistance

- a last-resort safety net for people who have temporary financial problems
- The Social Services can demand, for example, that you look for a job and agree to take part in the municipality's or employment office's programmes or measures for the unemployed.
- You must totally lack financial resources of your own to be entitled to assistance.
- You have to apply for any general benefits and compensation to which you may be entitled such as sickness benefit, parental allowance, housing benefit and maintenance support

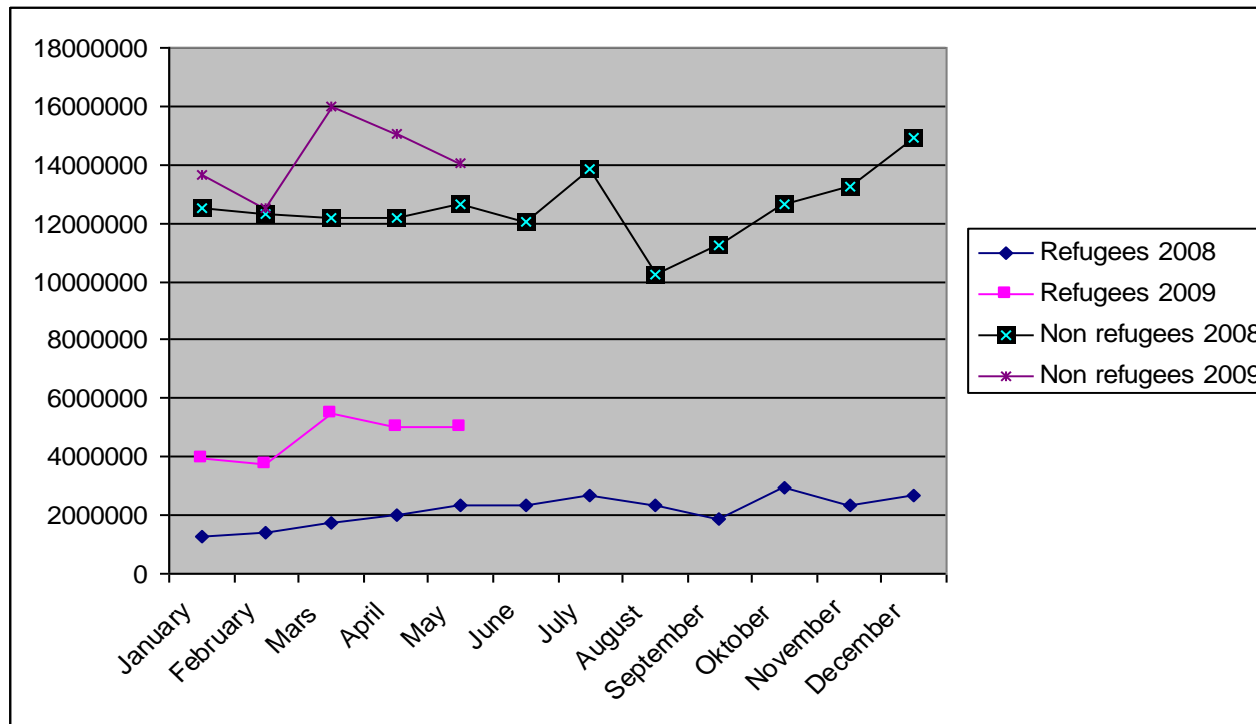
Social assistance in Sweden

- Increased costs in 7 of 10 municipals during the first quarter of 2009 compared to the same period last year
- An effect of the economic downturn
- 50 % on social assistance are foreign born
- In Södertälje approx. 60 percent.

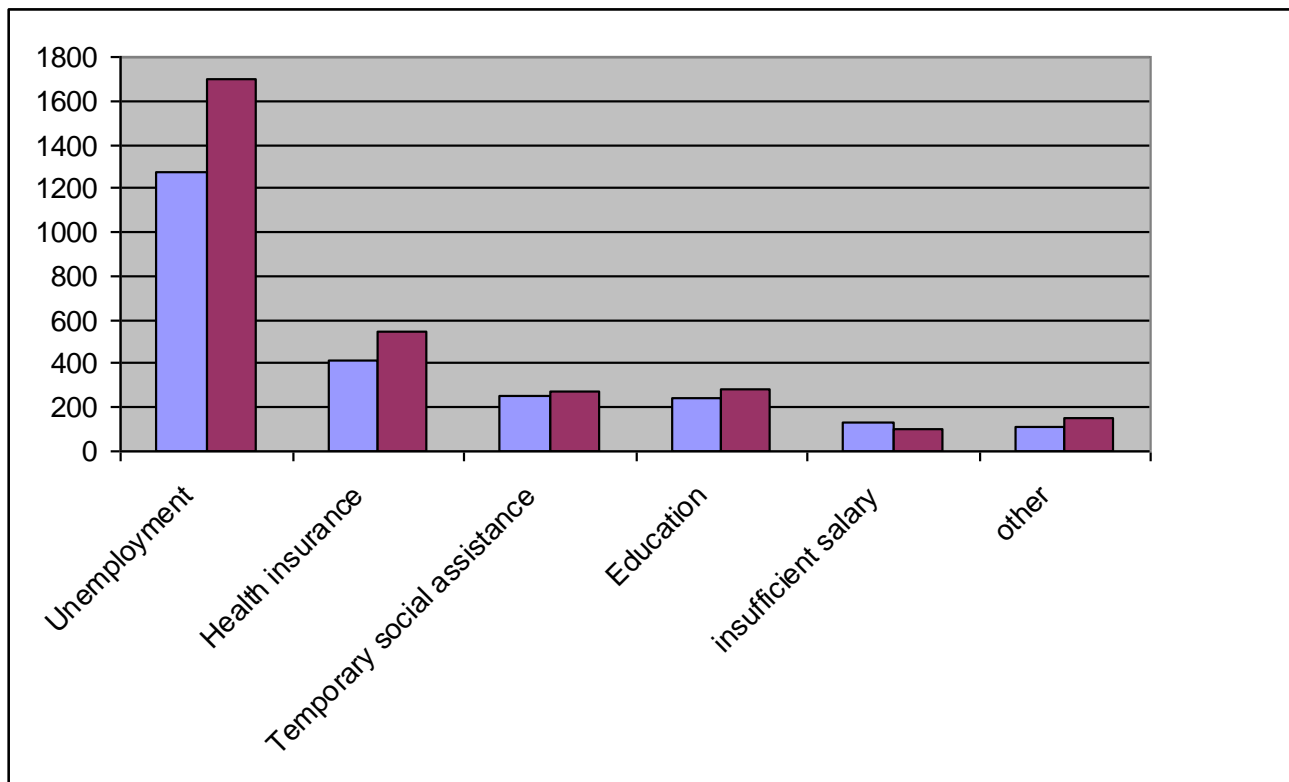
Social assistance in Södertälje (swedish currency)



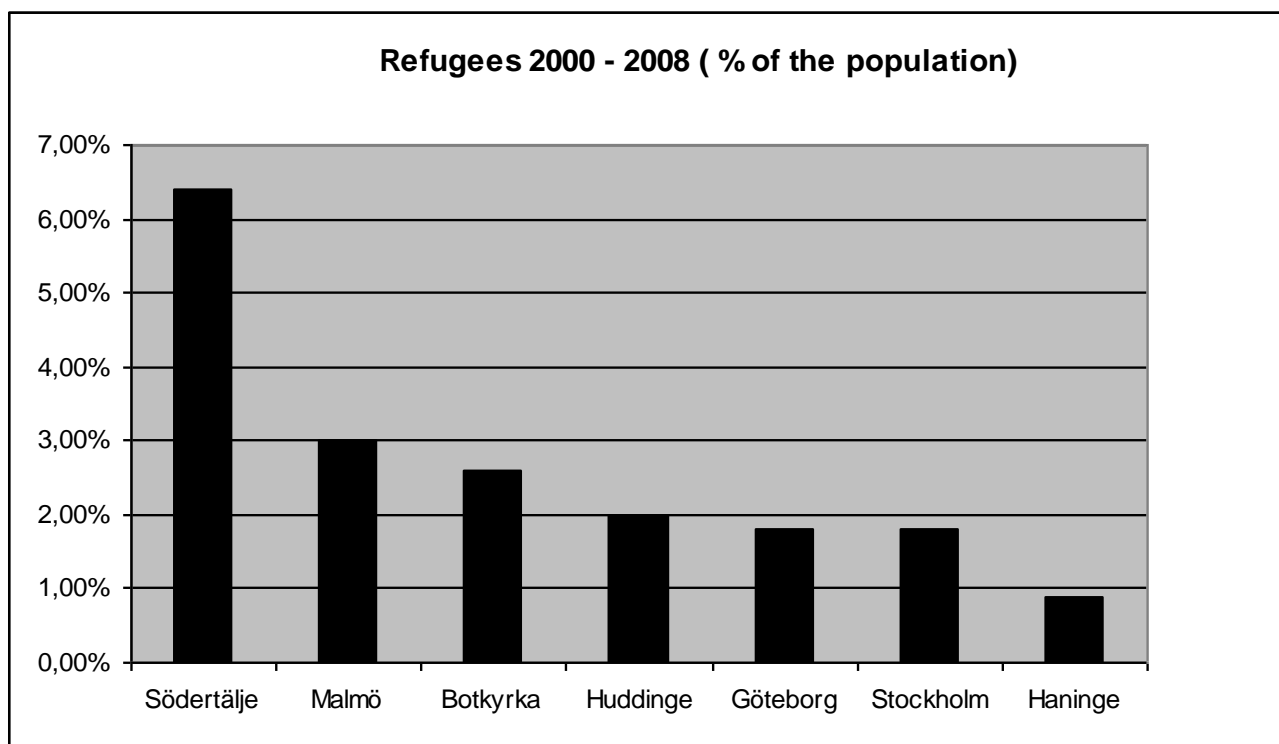
Social assistance refugees/non refugees (Södertälje)



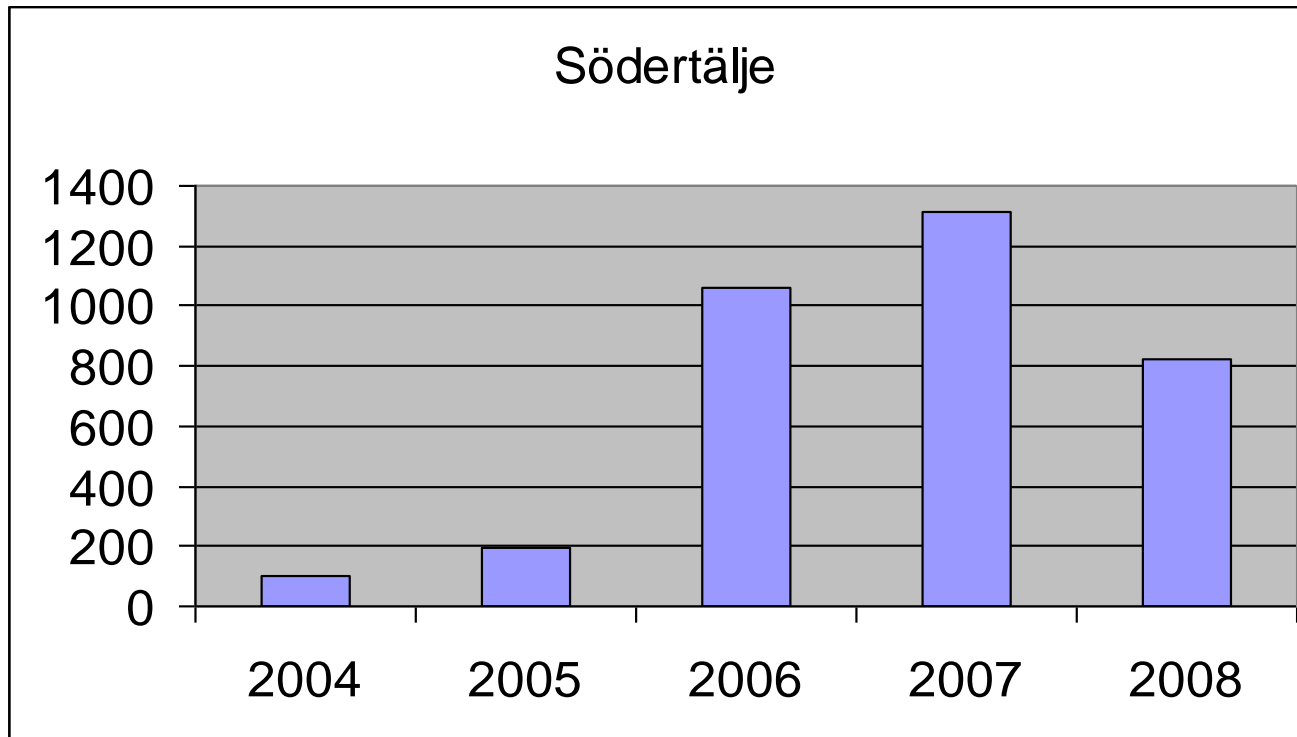
Why do people apply for social assistance? (May 08 and may 09)



Refugees in Södertälje 2000 -2008 compared to other municipals in Sweden



Refugees 2004-2008



Three year action plan

Organization development (social assistance)

- specialized approach towards different kind of groups (refugees, young people)
- increased control and increased support
- increased co-operation with with other authorites and municipal
- increased co-operation within the municipal