

OECD Standard Codes for the Official Testing of
Agricultural and Forestry Tractors

**The 15th Biennial Test Engineers'
Conference, Korea
('09. 9.21 ~ 9.25)**

Organized by
OECD Directorate for Trade and Agriculture
Committee for Agriculture

Hosted by Korea
National Academy of Agricultural Science(NAAS)
Rural Development Administration(RDA)

2009 OECD Tractor Code Annual Meeting, 2009. 2. 24





15th OECD TEST ENGINEERS' CONFERENCE, KOREA 21~25 Sept. 2009.

INVITATION

Dear Delegates,

On behalf of the Korean government, I am pleased to invite the OECD tractor testing institutes to take part in the 15th Test Engineers' Conference in Suwon, Korea on 21-25 September, 2009.

Suwon city is at the center of Korean Agriculture serving home to the National Academy of Agricultural Science (NAAS), which carries out tractor testing in Korea, and to the Rural Development Administration (RDA), which is the national government agency in charge of agricultural research. Aside from NAAS, RDA also has institutes on crop science, livestock, horticulture and an Agricultural College. Suwon is 85 km from the Incheon International Airport and 40 km from Seoul.

Also, Korea has made successful results in the field of agricultural mechanization and tractor testing in such a short period under small farming conditions

The conference will feature technical discussions, demonstrations and visits to a tractor factory and historical places.

I fervently hope that the OECD tractor testing members will make Suwon, Korea their destination in 2009 to see a country whose cultural heritage dates back to over 5,000 years and whose people maintains a tradition of welcoming guests warm-heartedly.

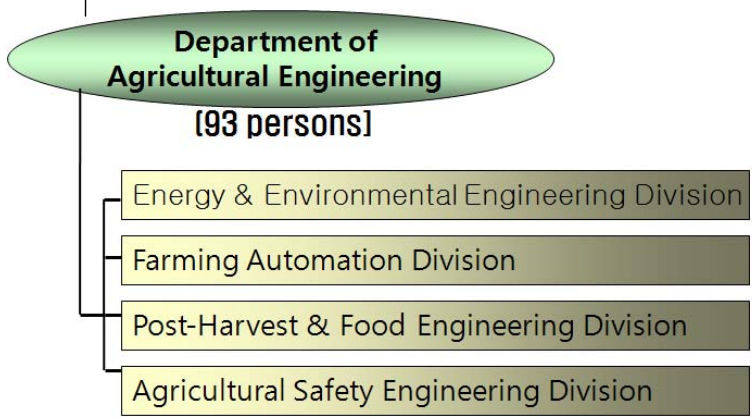
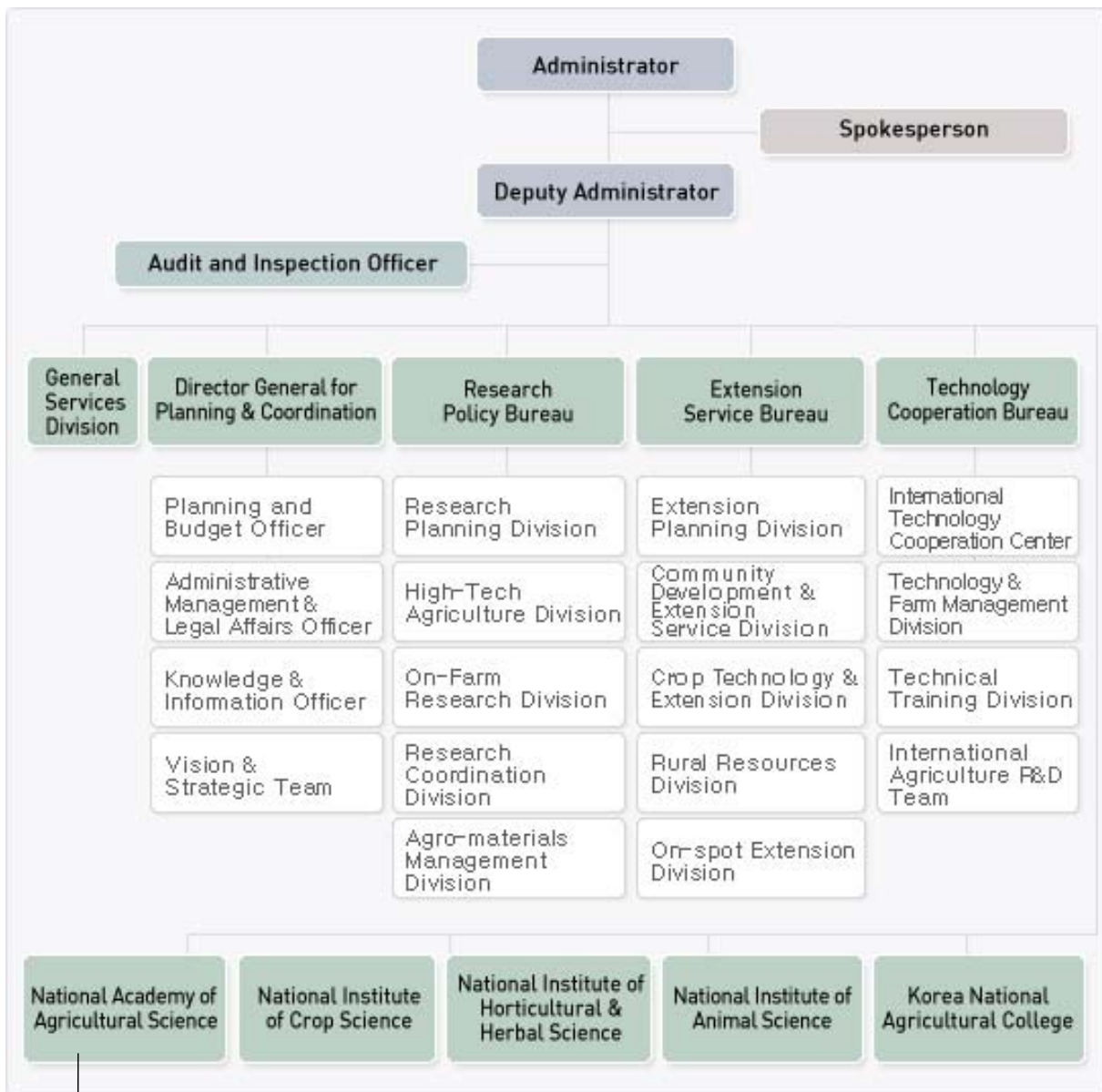
With my best regards,

Eun-Gi Cho

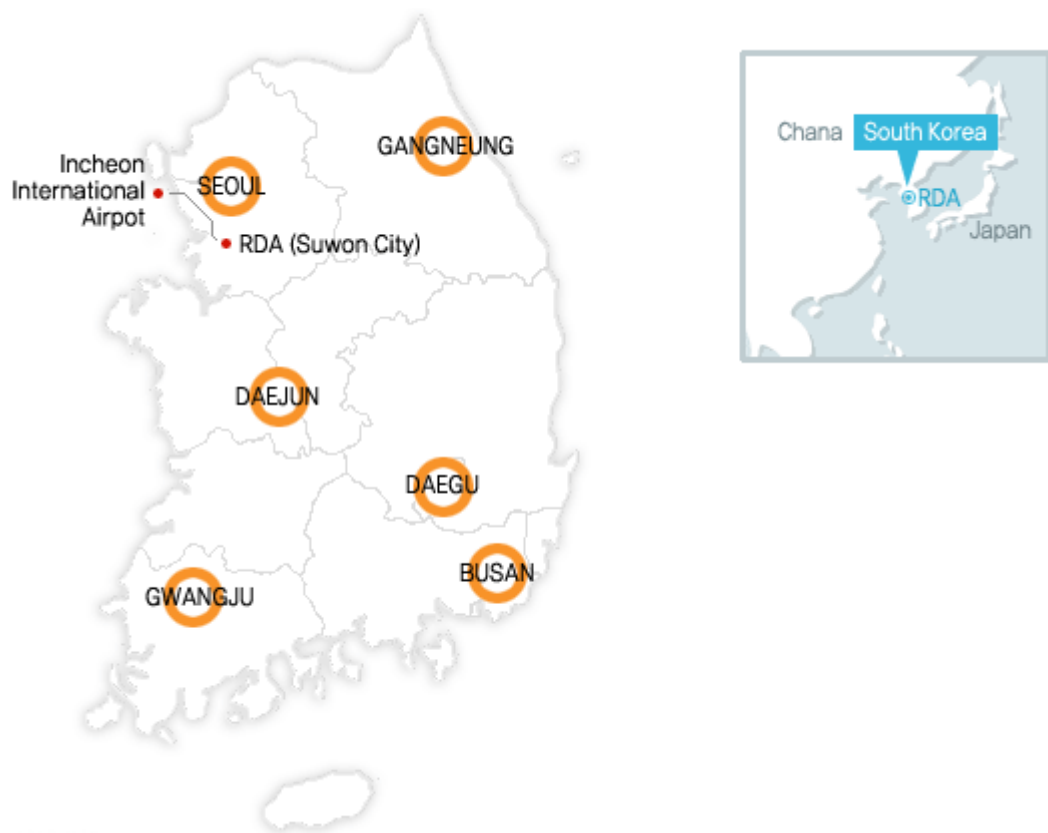
Director-general

National Academy of Agricultural Science (NAAS)

Organization of RDA



Location of RDA

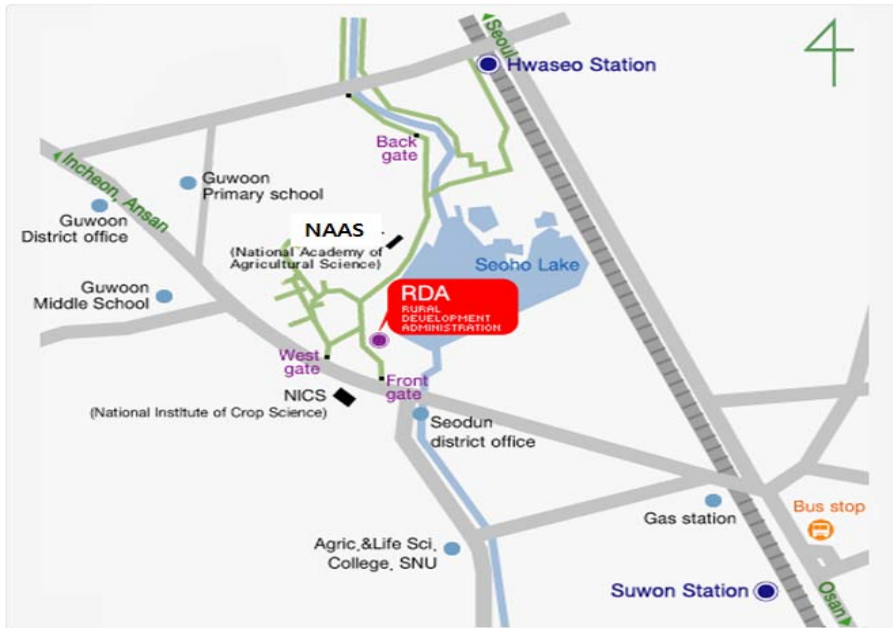


An outline map of the interior in RDA

Organization

■ The Incheon international airport bus use guide

Type	Limousine
Course	Incheon International Airport - Suwon
The first car	05:50(To Suwon), 04:50(To Incheon International Airport)
The last car	22:40(To Suwon), 20:30(To Incheon International Airport)
Interval	20~30 minutes
Note	Gyeonggi airport limousine bus(+ 82 31 382 9600)
Time required	around an hour



■ **Address** : Suin-ro, 150th(250th, Seodun-dong) Gwonseon-gu Suwon Gyeonggi-do, Republic of Korea

■ **Tel** : 82-31-299-2200 Fax : 82-31-299-2469

The Department of Agricultural Engineering in NAAS

Welcome to the Department of Agricultural Engineering

We would like to express our sincere appreciation for your visit.

Our department has been developing agricultural engineering technologies and machineries. We have been testing and evaluating agricultural machineries for farmers, agricultural industries and other related areas.

Our department's key missions include the:

- (1) Accomplishment of comfortable and efficient agricultural operation through automated, robot-based and/or factory-based crop production
- (2) Creation of additional value through engineering technologies and machineries for the grading and distribution of agricultural and livestock products
- (3) Accomplishment of environment-friendly agriculture through low-input site-specific crop management and the utilization of natural energy
- (4) Export promotion of agricultural machineries through internationally-certified testing and evaluation techniques, and improvement of repairs and services through the standardization of machine parts

We would like to share related information with you through this conference.

You are always welcome to our department, and we will do our best to meet your expectations.

Again, thank you very much for visiting.

Hak-kyu Kim
Deputy Director-General
Department of Agricultural Engineering
National Academy of Agricultural Science

History

1962	1962.03. Founded as the Institute of Agricultural Engineering and Utilization, RDA
1979	1979.12. Established as the National Agricultural Mechanization Research Institute (NAMRI), RDA
1994	1994.12. Role expanded to cover the evaluation and testing of agricultural machineries (Agri. Machinery Testing and Evaluation Div. in NAMRI)
1995	1995.12. Assigned as the OECD Agricultural and Forestry Tractors Testing Institute
1999	1999.12. Appointed as the Chief Secretary Institution of the ISO Agricultural Machinery
2004	2004.01 Reorganized as the National Institute of Agricultural Engineering, RDA
2006	2006.06 The Agricultural Facilities & Resources Engineering Division was created
2008	2008.10 Reorganized as the National Academy of Agricultural Science, RDA
2008	2008.12 NAAS gets accredited by ILAC/KOLAS(Korea Laboratory Accreditation Scheme) on tractor testing based on ISO 17025

Function

Research for promoting agricultural engineering

- Development of high efficiency and automation technology in agricultural operations
- Agricultural machinery development, improvement and commercialization
- Postharvest management mechanization technologies
- Studies on farm land environment and water management

Testing and Evaluation of agricultural machinery

- Performance and safety evaluation of agricultural machineries
- Testing of OECD tractors

General Information on the 2009 TEC in Korea

Duration : 21 -25 September 2009

Meeting (2009 TEC) Venue and Accommodation in Suwon :

IBIS Ambassador Hotel in Suwon

1132-12, Ingye-Dong, Paldal-Gu, Suwon-si, Gyeonggi-do 442-815, Korea

Tel : +82 31 230 5000 FAX : +82 31 230 5007

Email: ibissuwon@ambatel.com

Website : http://www.ambatel.com/ibis_suwon/

Test Demonstration Site:

National Academy of Agricultural Science

Department of Agricultural Engineering

Suin-ro 150(249 Seodun-dong), Suwon-si, Gyeonggi-do, Republic of Korea

Tel : +82 31 290 1950 FAX : +82 31 290 1960

Meeting Venue (2009 TWG) and Accommodation in Gyeong-ju :

Commodore Hotel Gyeong-ju Chosun in Gyeong ju

410-2, Shinpyeong-Dong, Gyeong ju-si, Gyeongsangbuk-do, Korea

Tel : +82 54 745 7701 FAX : +82 54 740 8260

Website : <http://www.chosunhotel.net/>

People to contact for registration and accommodation, TEC and TWG in Korea

Representative	Staff
Mr. Kyu-Hong CHOI Director Agricultural Safety Engineering Division Department of Agricultural Engineering National Academy of Agricultural Science (NAAS), Rural Development Administration (RDA) 249, Suin-ro, Suwon-si, Gyeonnggi-do, Korea Tel: + 82 31 290 1930 Fax: + 82 31 290 1960 Email: khchoi@rda.go.kr	Mr. Hyuck-Joo KIM Researcher Agricultural Safety Engineering Division Department of Agricultural Engineering National Academy of Agricultural Science (NAAS), Rural Development Administration (RDA) 249, Suin-ro, Suwon-si, Gyeonnggi-do, Korea Tel: + 82 31 290 1950 Fax: + 82 31 290 1960 Email: agrihj@rda.go.kr

Registration and Hotel Fees:

(1) Registration Fee (200 Euros) and Payment Instructions

All delegates (participants and accompanying persons) are required to pay a registration fee of 200 Euros each in cash to the organizer at the hotel front/ lobby upon arrival at the IBIS Ambassador Hotel in Suwon. Receipts for registration will be provided. The registration fee includes all convention kits, all lunches, welcome dinner and coffees, transportation, study tour, site seeing, etc. for the whole duration of the conference. This, however, does not include the bus fee from the international airport to the hotel in Suwon.

(2) Hotel Information and Fees

Your hotel reservation will be made by RDA on the basis of the information you provide on the accommodation forms, which you should accomplish and submit to RDA within the set deadline for registration. Participants may arrange for their accommodation by themselves. However, they will not be able to avail of the special rates offered by the hotel. We suggest all delegates stay in the same hotel to take advantage of the special rates for OECD Test Engineer's Conference. The hotel reserved by RDA at special rates is the IBIS Ambassador Hotel in Suwon for the TEC program, and the Commodore Hotel Gyeong-ju in Gyeong ju for the TWG. General information on these hotels are provided below:

IBIS Ambassador Hotel in Suwon is a four-star hotel located East of Suwon and about 20 minutes from RDA by bus. Also, it takes about an hour from Incheon International Airport to the hotel. Room rates are as follows:

Room Type	Normal rate	Rate for OECD
Double	87 Euros	70 Euros
Twin	87 Euros	70 Euros
Junior suite	133 Euros	112 Euros

- ※ All rates include 10%V.A.T and breakfast.
- ※ Presumed exchange rate = 1,600 Korean Won/Euro
- ※ The rates may change depending on the exchange rate.

Commodore Hotel Gyeong-ju in Gyeong ju is four-star hotel, located at the center of Gyeong-ju city. It is about 10 minutes from Gyeong-ju railway station. Room rates are as follows:

Room Type	Normal rate	Rate for OECD
Standard double	117 Euros	72 Euros
Junior Suite	148 Euros	88 Euros

- ※ All rates include 10%V.A.T and breakfast.
- ※ Presumed exchange rate = 1,600 Korean Won/Euro
- ※ The rates may change depending on the exchange rate.

For reservation, please fill in the registration form and send back to the staff in charge by e-mail (agrihj@rda.go.kr) or fax (+82 31 290 1960, Hyuck-joo KIM).

Transportation from Incheon Airport to IBIS Ambassador Hotel in Suwon :

Our staff will be waiting for your arrival at the Incheon International Airport to guide you to a Limousine Bus going to Suwon. Upon arriving in Suwon, you can take a taxi to IBIS Ambassador Hotel. It takes about 10 minutes to reach the Hotel. The expenses for Limousine bus and taxi and the hotel accommodation fee will be paid by the participants themselves.

Hotel Reservations

Reservations for the hotel accommodation are required to be made in advance. Please return your registration form to <agrihj@rda.go.kr> before 15 April 2009 so we can reserve rooms for you.

<Registration Form for Accomodation>

Application for reservation to IBIS Ambassador Hotel in Suwon and Commodore Hotel Gyeong-ju in Gyeong ju			
Name of delegate:			
Address:			
Tel/Fax:			
Name of the Accompanying person:			
Number of nights in IBIS Ambassador Suwon			
Number of nights in Commodore Hotel Gyeong-ju			
Room Style in IBIS Ambassador Suwon		double	twinn Junior sweet
Room Style in Commodore Hotel Gyeong-ju		Standard double	Family twin
Meal preference		Vegetarian	Non Vegetarian Other
Arrival	Date	Time	Flight no.
Departure	Date	Time	Flight No.
Other requirements :			

Please send this form to the following by e-mail:

agrihj@rda.go.kr

Information about the Culture and Climate of Korea

General Information

Official Name : Republic of Korea (South Korea)

Location : The Korean Peninsula (the northeastern section of the Asian continent)

Area : Korean Peninsula: 223,098 km², South Korea: 99,678 km²

Capital City : Seoul

Population (2007) : 48.46 million

Political system : Presidential system(President Lee Myung-bak(since 2008~))

Economic status (2007) :

GDP: US\$969.9 billion, Per capita GNI: US\$20,045

Monetary Unit : Won (US\$1=1428 won), the exchange rate of 16. Feb. 2009

Language : Korean (Written form: Hangeul)

Land and Climate

The Korean Peninsula is situated at the eastern end of the Asian continent extending about 1,100 km long. China lies across the Yellow Sea to the west, while Japan is across the East Sea to the east. Mountains cover 70 percent of the land area and over 3,000 islands are scattered along the coasts. The peninsula is currently divided into the Republic of Korea (ROK) in the south and the Democratic People's Republic of Korea (DPRK) in the north, separated by the demilitarized zone (DMZ). Korea belongs to the temperate zone with four distinct seasons. Spring is rather short but very pleasant and sunny. Summer is hot and humid with monsoon rainfalls in July. Autumn is especially beautiful as vivid golds and vibrant reds create a colorful panorama. During your visit, the average temperature will be about 20.8 °C. Gyeong-ju is a little warmer than Suwon. Winter is cold and dry with occasional snow. Jeju-do (Island) in the southwest of the peninsula has a mild subtropical climate.

Culture

Korea's history dates back from the Gojoseon (2333 B.C.). Through its 5,000-year history, Korea has developed a truly distinct culture while interacting with the larger nations surrounding it.

UNESCO has so far named eight Korean sites to the World Heritage List:

1. Jongmyo Shrine
2. Haeinsa Temple Janggyeong Panjeon, the Depositories for the Tripitaka Koreana Woodblocks
3. Bulguksa Temple and Seokguram Grotto

4. Hwaseong Fortress
5. Changdeokgung Palace Complex
6. Gyeongju Historic Areas
7. Gochang, Hwasun and Ganghwa Dolmen Sites
8. Jeju Volcanic Island and Lava Tubes

VISA Information for Participants:

Our government requires a visa for your entry to Korea. However, many countries are under Visa Waiver Agreements (December 6, 2008) with Korea. Please note that nationals of the following countries are permitted to enter without visa in accordance to the visa free entry permissions for non-Korean nationals:

Country	Applicable Passports	Maximum period of stay
AUSTRIA	Ordinary, Diplomatic, Official passport	Ordinary:3 Months, Diplomatic • Official passport:180days, Staff stationed in Korea : During a period of incumbency
ARGENTINA	Diplomatic, Official passport	90 days
BELGIUM	Ordinary, Diplomatic, Official passport	3 Months
BRAZIL	Ordinary, Diplomatic, Official passport	Ordinary:90 days, Diplomatic • Official passport:3 Months, Staff stationed in Korea : During a period of incumbency
CHINA	VISA is needed for all passport	
CZECH	Ordinary, Diplomatic, Official passport	3Months, Staff stationed in Korea : During a period of incumbency
DENMARK	Ordinary, Diplomatic, Official passport	3 Months
FRANCE	Ordinary, Diplomatic, Official passport	3 Months
FINLAND	Ordinary, Diplomatic, Official passport	3 Months
GERMANY	Ordinary, Diplomatic, Official passport	Ordinary:3 Months, Diplomatic • Official passport:Unlimited, Staff stationed in Korea : During a period of incumbency
GREECE	Ordinary, Diplomatic, Official passport	Ordinary:3 Months, Diplomatic • Official passport:Unlimited
ICELAND	Ordinary, Diplomatic, Official passport	3 Months
INDIA	Diplomatic, Official passport	90 days
IRELAND	Ordinary, Diplomatic, Official passport	3 Months

ITALY	Ordinary, Diplomatic, Official passport	90days
JAPAN	Ordinary, Diplomatic, Official passport	Ordinary:B-2, 90days, Diplomatic • Official passport:3 Months, Staff stationed in Korea : During a period of incumbency
LUXEMBOURG	Ordinary, Diplomatic, Official passport	3 Months
MEXICO	Ordinary, Diplomatic, Official passport	Ordinary:3 Months, Diplomatic • Official passport:90 days
NETHERLAND	Ordinary, Diplomatic, Official passport	3 Months
NEW ZEALAND	Ordinary, Diplomatic, Official passport	3Months, Staff stationed in Korea : During a period of incumbency
NORWAY	Ordinary, Diplomatic, Official passport	3 Months
POLAND	Ordinary, Diplomatic, Official passport	3Months, Staff stationed in Korea : During a period of incumbency
PORTUGAL	Ordinary, Diplomatic, Official passport	60 days
RUSSIA	Diplomatic, Official passport	90 days
SERBIA and MONTENEGRO	VISA is needed for all passport	
SLOVAK	Ordinary, Diplomatic, Official passport	3Months, Staff stationed in Korea : During a period of incumbency
SPAIN	Ordinary, Diplomatic, Official passport	3 Months
SWEDEN	Ordinary, Diplomatic, Official passport	3 Months
SWITZERLAND	Ordinary, Diplomatic, Official passport	3 Months
TURKEY	Ordinary, Diplomatic, Official passport	3 Months
UNITED KINGDOM	Ordinary, Diplomatic, Official passport	3 Months
UNITED STATES OF AMERICA	VISA is needed for all passport	

If your country is not under the Visa Waiver Agreements or if you don't have the kind of passport for visa-free entry, you have to get a visa through the R.O.K Embassy or Consulate in your country.

※ Information about Korean visas can be accessed from

<http://www.hikorea.go.kr/pt/index.html>

※ If you need more information on Korean visas, please let us know.