

Reviews of Higher Education in Regional and City Development

Roundtable Meeting for Participating Regions, Paris , September 2009

What Have We Learned?

Lessons from the Bio Bio Region Review

Martin Zilic

Chair of the Regional Steering Committee

for the Bio Bio Region,

Jorge Dresdner

Coordinator of the Working Team

WHERE WE ARE



REGION DEL RIO NEGRO
SISTEMA NACIONAL DE Acuicultura
Y DESARROLLO PRODUCTIVO



Universidad del
Desarrollo



Inacap



Background Facts about the Bio Bio Region



- ▶ 1,861,562 inhabitants.
- ▶ 12% of the country's population.
- ▶ 18% of the population lives in rural areas.
- 54,000 indigenous people (Mapuches).

Background Facts about the Bio Bio Region

ADMINISTRATIVE AND POLITICAL DIVISION



4 PROVINCES:

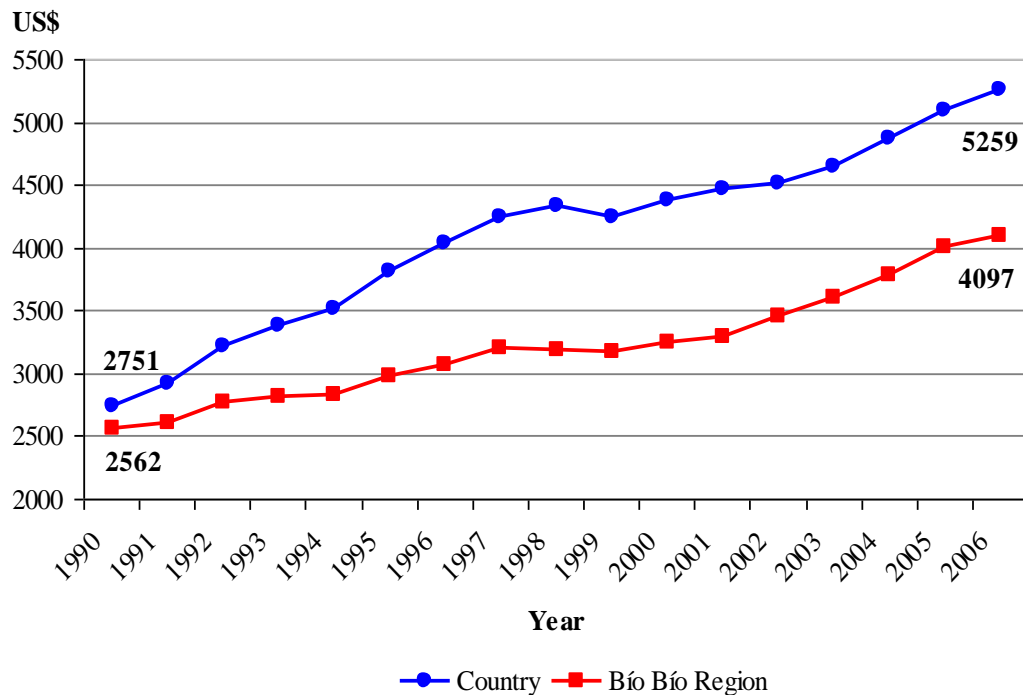
- CONCEPCIÓN
- ÑUBLE
- ARAUCO
- BIO BIO

- ▶ The population is concentrated in the coastal areas.
- ▶ Half of the population lives in the area of Concepción.

INCOME PER CAPITA : COUNTRY / REGION

1990-2006

Figure 1.4
Per Capita Gross Domestic Product
Bío Bío Region and Country
1990-2006



Source: Authors' elaboration using data from Instituto Nacional de Estadísticas and Banco Central de Chile (BCCH).

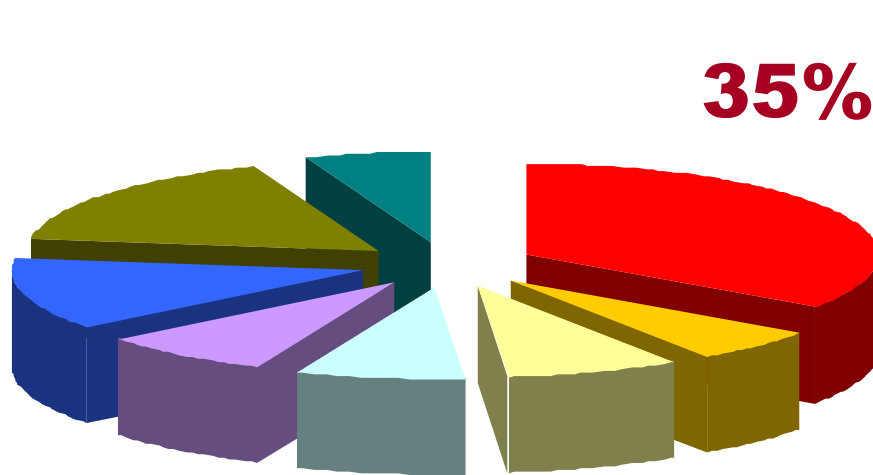
Note: Gross Domestic Product in dollars from 2003.

INCOME GROWTH PER CAPITA :

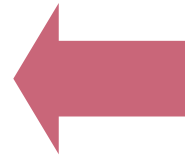
▶ Rapid GDP growth in the country, but slow economic growth in the region.

Share of the Economic Sectors in the GDP of the Region 2006

A Diversified Economy

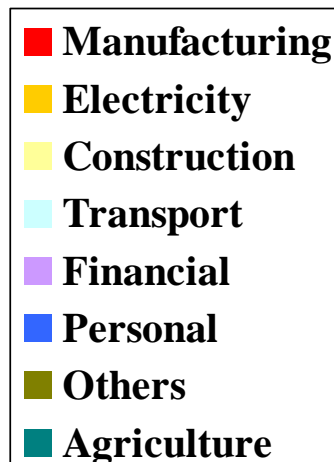


35%

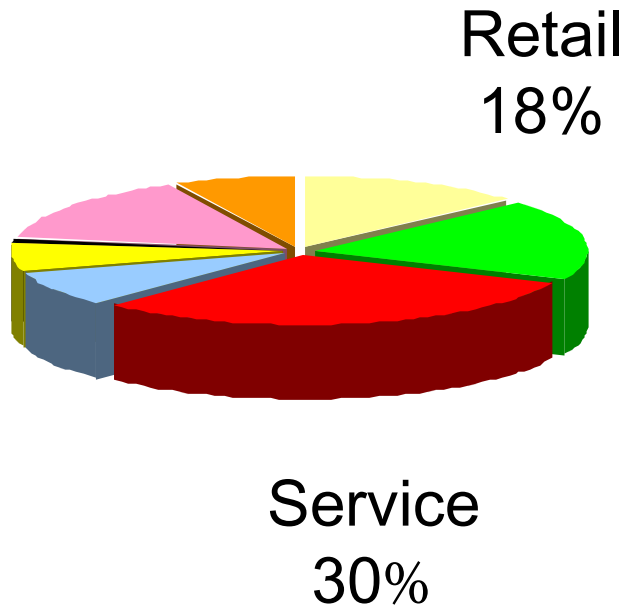


▶ The Industrial Manufacturing activity is the most important sector.

▶ The Natural Resource sectors (forestry and fishing) are the most dynamic sectors.



BIO BIO REGION: SECTORIAL SHARE ON EMPLOYMENT ANNUAL AVERAGE 2007



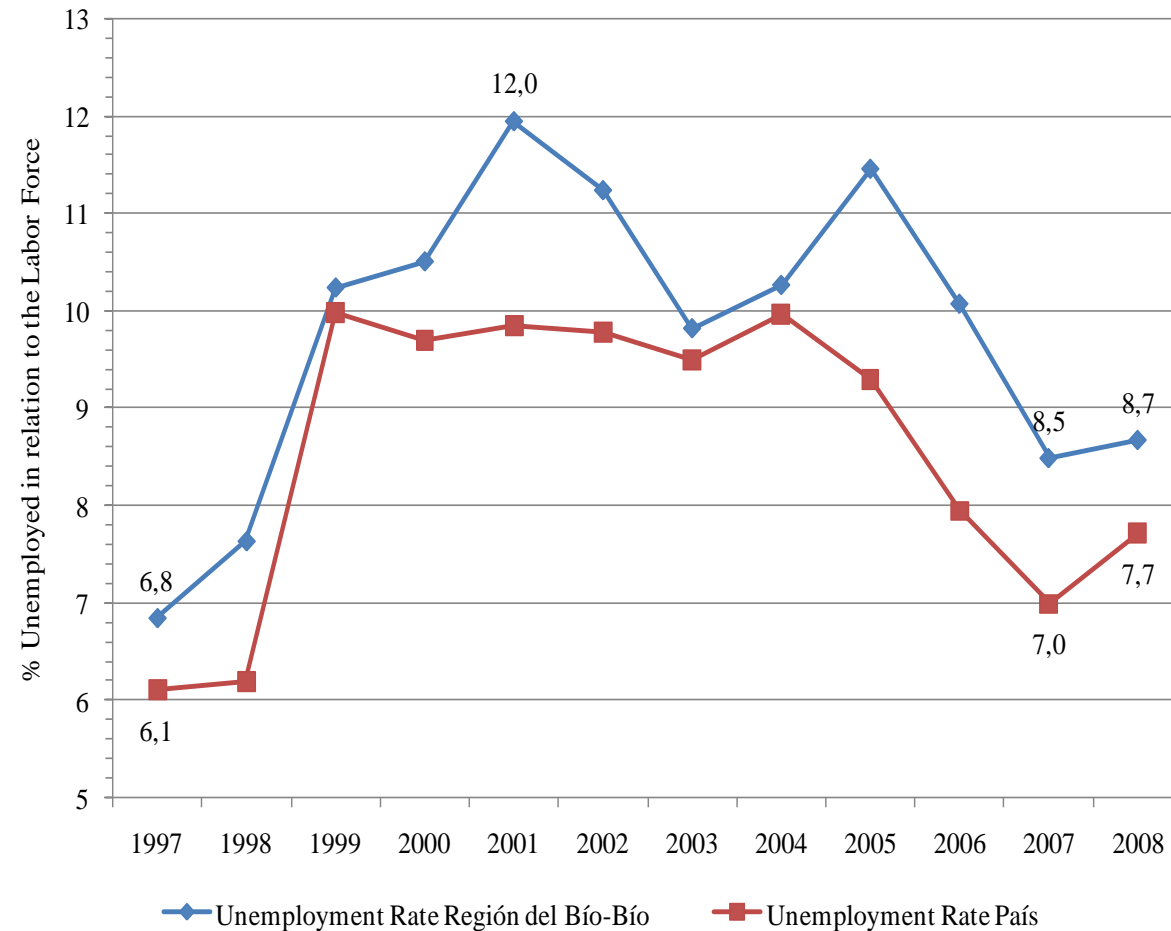
- **Employment** is concentrated in Commerce and Service Sectors.

- **The Manufacturing Industry** creates few new jobs.

- Many **SMEs** with low productivity.

UNEMPLOYMENT RATES

National versus Bio-Bio Region Annual Average 1997-2008



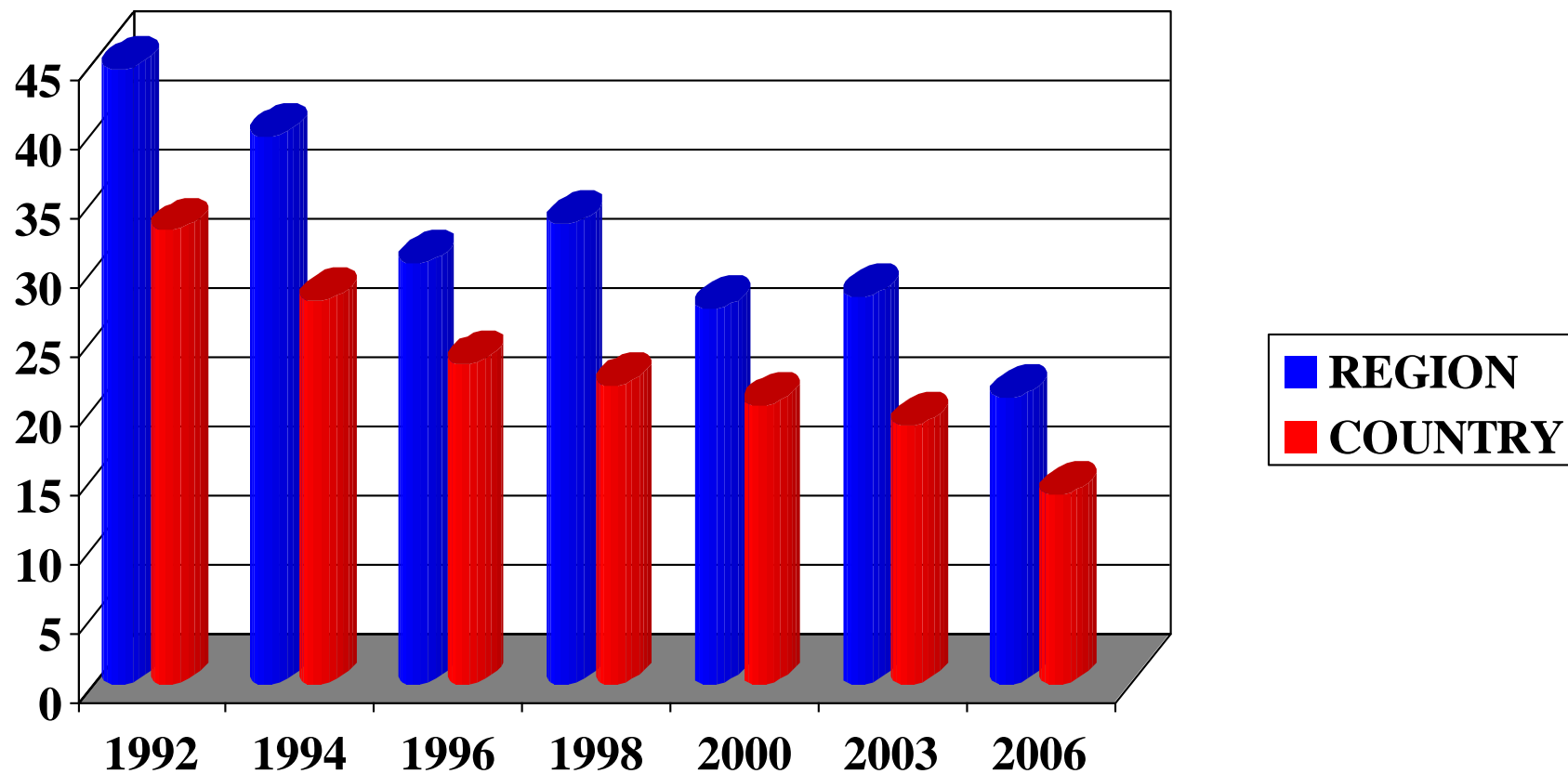
Slow Job Growth, Overall Wage Inequality:

- The Regional unemployment rate is consistently higher than the National one.
- The Regional wages are lower than the national average.

PROPORTION OF POOR POPULATION

NATIONAL / BIO BIO REGION

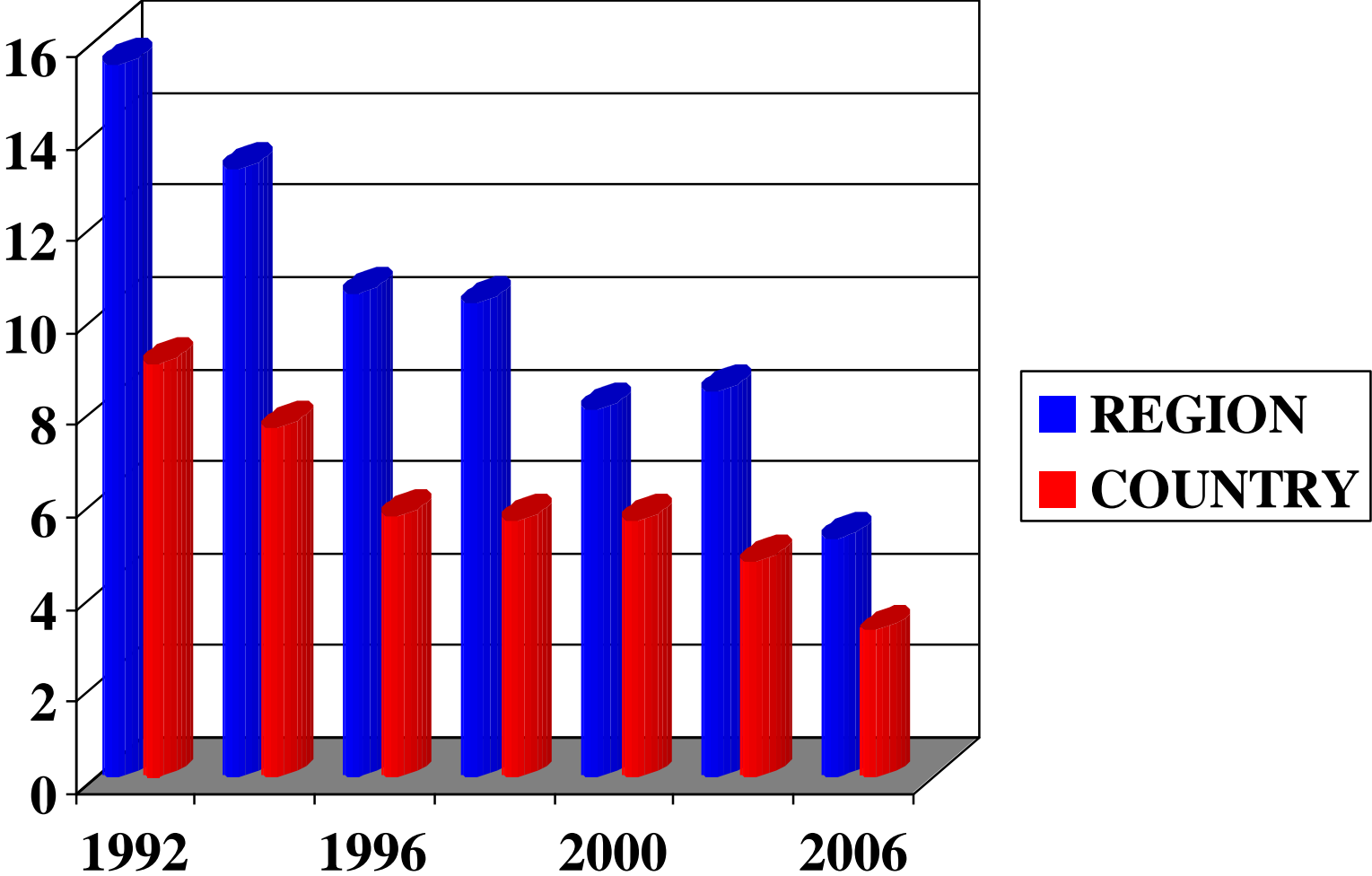
1992-2006



PROPORTION OF INDIGENT POPULATION

NATIONAL / BIOBIO REGION

1992-2006





**Which are the most important
Regional obstacles and
accomplishments?**

The Principal Obstacles for Further Development.

- Much higher rates of poverty than in the rest of the country.
- Highly unequal income distribution.
- Low added-value production.
- Lower wages and employment opportunities.
- High unemployment rate.
- Mismatch between available and demanded skills.
- Brain drain to Metropolitan area.

The most important accomplishments of the Region.

- ✓ Decline in the poverty rate.
- ✓ Per capita income growth.
- ✓ Diversified economy.
- ✓ Wider access to education, particularly to tertiary education.
- ✓ An important higher education industry.

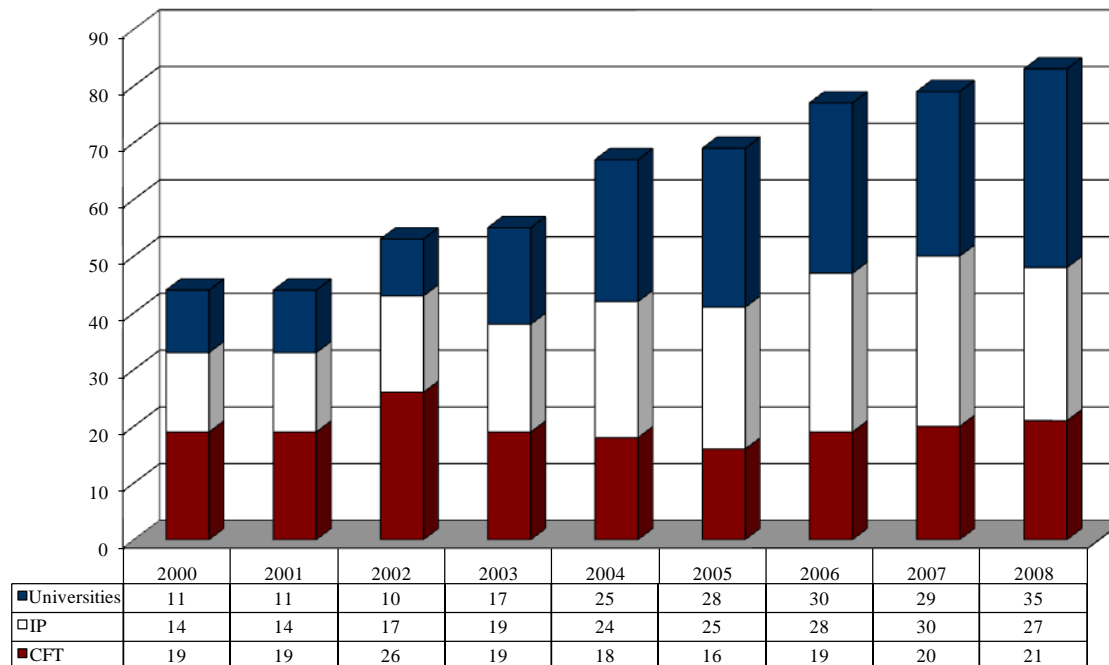




**THE HIGH EDUCATION
INSTITUTIONS (HEI)
IN THE BÍO BÍO REGION**

HEI in the Bío Bío Region

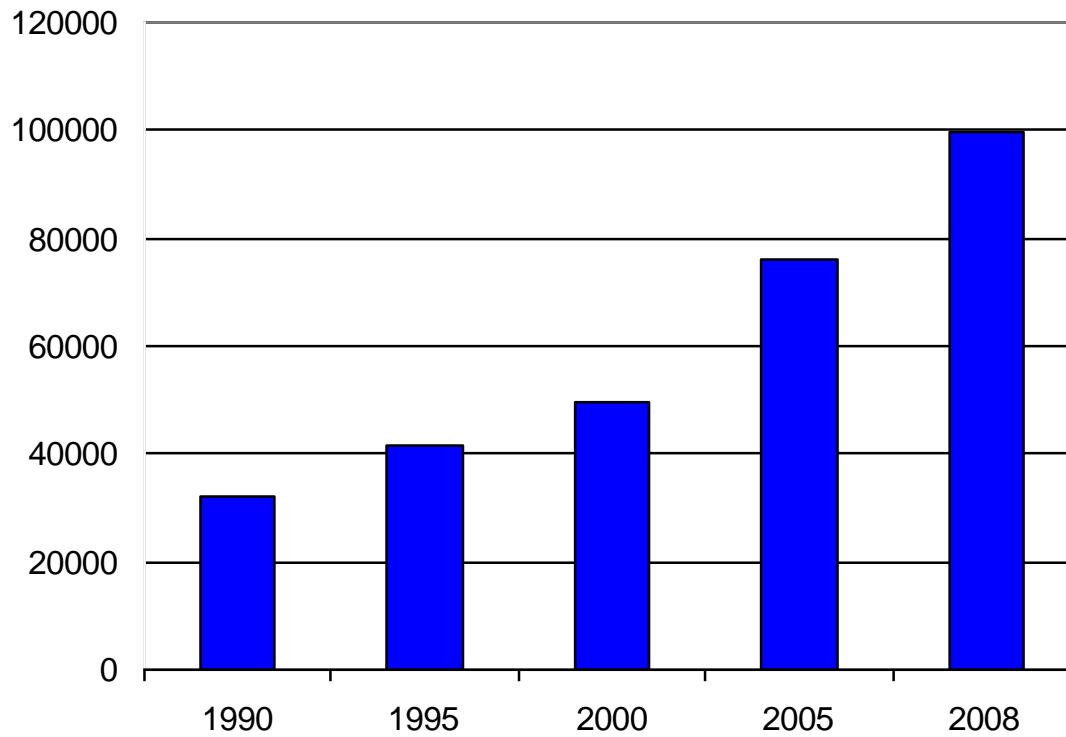
Number of HEI with Presence in the Bío Bío Region:
2000 -2008



Number of
HEI
increased
from 44
(2000) to 83
(2008).

HEI in the Bío Bío Region

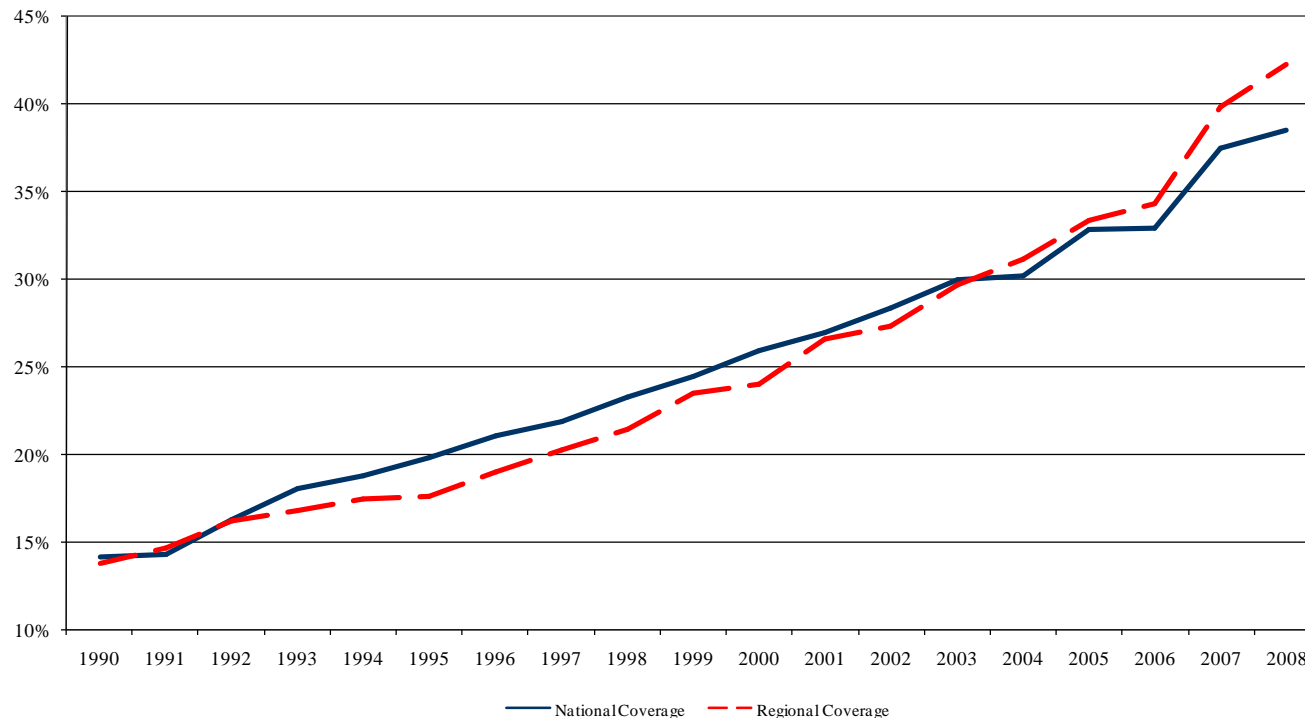
Number of pregraduate enrolled students in the Bío Bío Region



Student enrollment has grown fast
94% of all enrolled students come from the Bío Bío Region

HEI in the Bío Bío Region

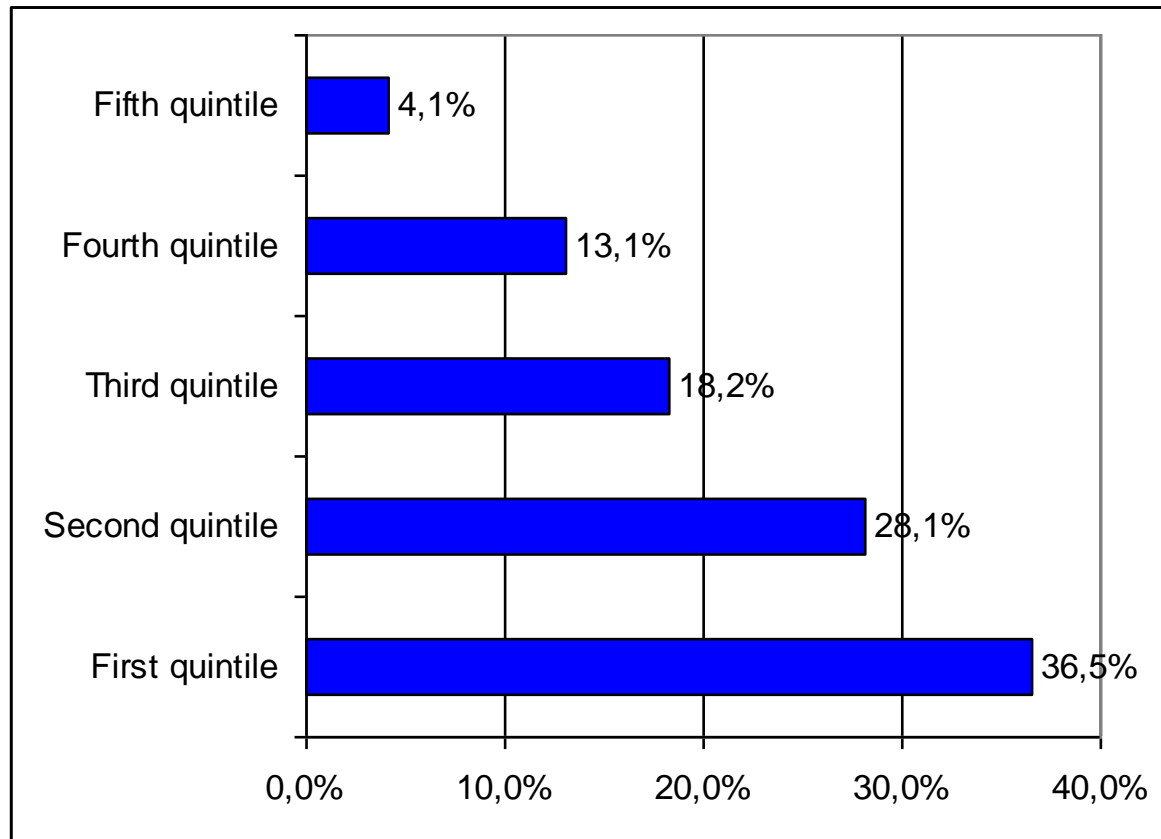
Coverage of undergraduate education for 18-24-year-old in the Country and in the Bío Bío Region: 1990 - 2008



Coverage increased from 13.7% in 1990 to 42.3% in 2008. On average 53% of students are male and 47% female

HEI in the Bío Bío Region

Social-Economic Composition of the Enrollment in the Bío Bío Region by Income Quintiles, 2008



Over 60% of the students belonged to the two lowest income quintiles

Principal Challenges in the HEI Sector

1. Increase in the HE enrollment, expansion of the HEI system. Incorporate new actors to regional development.
2. Bias towards university studies.
3. High “drop out” rate and uneven educational quality.
4. Limited articulation and missing pathways between HEIs and different levels of HEIs.
5. Embryonic and unsystematic lifelong education system
6. Review of incentive system for academic engagement in regional development.

Principal Challenges in the HEI Sector

7. Actions to promote collaboration within HEI and with other stakeholders.
8. Creation of an interface for collaboration between HEI and business sector. Innovation for the SMEs(?)
9. Decentralization of decisions to the regional level.



THE REVIEW IN THE BÍO BÍO REGION

How was the Review Done?

The Bío-Bío Region was incorporated to the programme in September 2008.

The Regional Task Force that had to carry on the Self Evaluation process was formed in October 2008.

Two committees were formed, one named “Comité Directivo” (Directive Committee), and one called “Comité Ejecutivo” (Executive Committee). The Directive Committee has representation from the major regional stakeholders. However, it sessios intermittenly. The Executive Committee is formed by some (few) representatives of the Directive Committee, and it takes care of the daily work. It has a weekly meeting frequency.

Dr. Martin Zilic was designed as the regional coordinator of the project.

How was the Review Done?, continued

- The Executive Committee decided to carry out the Self-Evaluation phase with the help of an external consulting group.
- The consultant group, that later became the working group, was composed of academic staff from three of the leading universities in the Bío Bío Region.
- The self evaluation developed between December 2008 and June 2009.
- The Self-Evaluation phase is finished. The Final Report was sent to the OECD headquarters in August 03, 2009.

What were the Challenges?

- Ascertain that “the Region” had the capacity to pursue the review.
- Obtain collaboration from the different HEIs and stakeholders.
 - Compose and organize the Steering Committee
 - Obtain the required information from HEIs and stakeholders.
 - Convoke stakeholders to participate in the self-evaluation.
 - Convince the stakeholders to give importance to the review in their agendas

What have we learned?

- To move focus from knowledge production to knowledge transfer.
- How to go forward to improve collaboration between HEIs and stakeholders.
- Moreover, there is an insight that the difficulties to collaborate are (at least partially) due to the high heterogeneity existing in the HEIs, and that collaboration might be more difficult in some areas than in others.
- The importance of having a more open and transparent information system to be able to track what is occurring in the regional HEI sector.

How did the Region Benefited from the Review?

- The review process has focused the attention on what are the HEIs doing for regional development.
- A shared diagnosis of the strenghts and obstacles for further development has been obtained.
- A kernel of people, from different types of institutions, thinking about how to mobilise the HEIs for regional development has been formed.
- We obtained and opportunity to benchmark the activities developed by the HEIs in the Region.
- Identification of a number of challenges that must be faced to Improve the contribution of HEIs to regional development.



THANK YOU!