



Insurance Market Development in Lao PDR

**OECD – Asia Regional Seminar:
Enhancing Transparency and Monitoring Insurance
Markets**

26-27 Jan 2011, Bangkok, Thailand

The Outline of Presentation

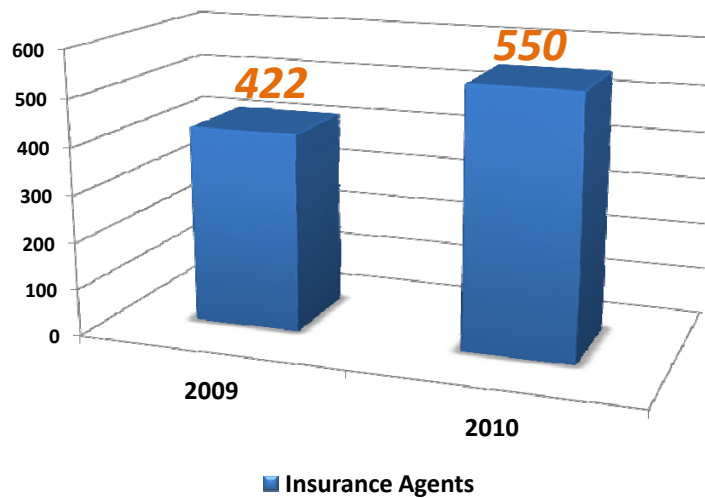
- I. Recent Insurance Market Development in Lao PDR
- II. Regulatory framework for Insurance Market Development
- III. International Cooperation
- IV. Insurance Supervision

I. Recent Insurance Market Development in Lao PDR

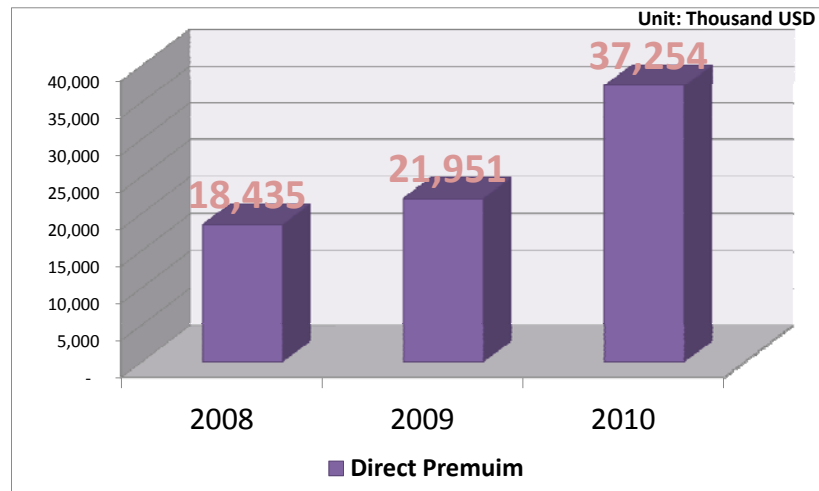
➤ The list of insurance companies

No.	Company	Establish year	Form of business	Type of business
1	AGL or (Alliance General Laos)	1992	Joint venture	Non-life
2	TOKOJAYA Insurance Company	2007	Joint venture	Non-life
3	LAO-VIET Insurance co.,Ltd	2008	Joint venture	Non-life
4	PCT - ASIA Insurance co.,Ltd	2009	Private Domestic	Non-life
5	MSIG Insurance co., Ltd	2009	Joint venture	Non-life
6	Lane Xang Assurance Public Company	2010	Joint venture	Non-life

➤ The Insurance Agents growth



➤ The Growth Premium



➤ Insurance Penetration and Density- Non-Life Business

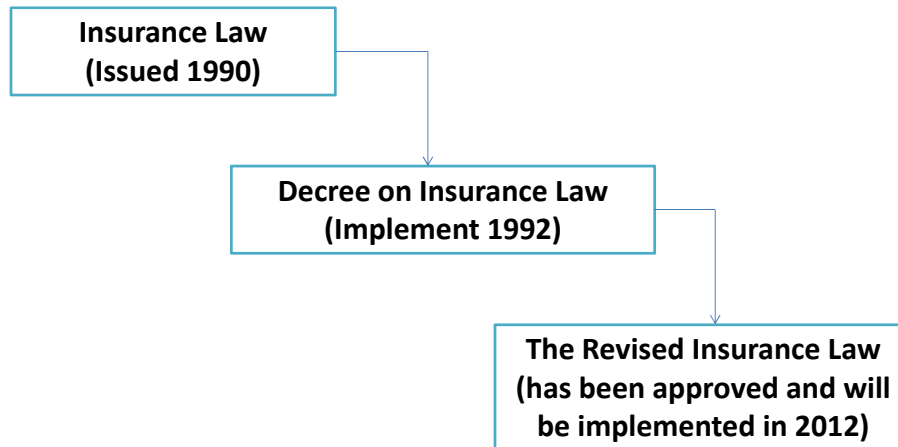
Insurance Penetration – Insurance Premium as a Percentage of GDP (USD)
Insurance Density – Insurance Premium Per Capita (USD)

No	Country	Insurance Penetration		Insurance Density	
		2009	2010	2009	2010
1	World*	2.98	2.89	253.90	263.00
2	ASEAN*	1.00	0.99	28.00	34.50
3	Lao PDR**	0.30	0.51	3.38	5.73

* source: Swiss Re Sigma Report 02/2011, 02/2010, 03/2009

** source: Ministry of Finance

II. Regulatory framework for insurance market

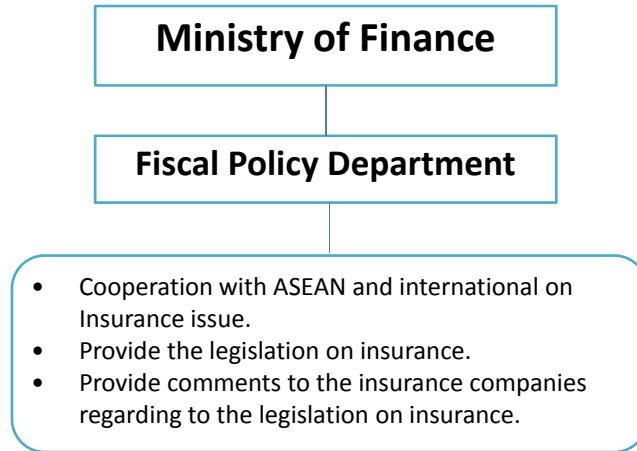


III. International Cooperation

- Association of Southeast Asian Nations (ASEAN), Lao PDR is committed to liberalize on Financial Services (Insurance and Banking under the ASEAN Framework Agreement on Services “AFAS”)
- International Association Insurance Supervision (IAIS) on Core Principle, Self assessment on IAIS
- The ASEAN Insurance Training and Research Institute (AITRI)
- Lao PDR hosted 12th ASEAN Insurance Regulators Meeting in 2009, in Vientiane.

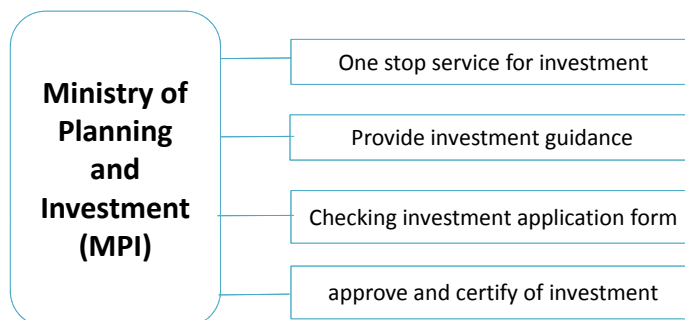
IV. Insurance supervision.

Chart of Ministry of Finance relating to insurance supervision.



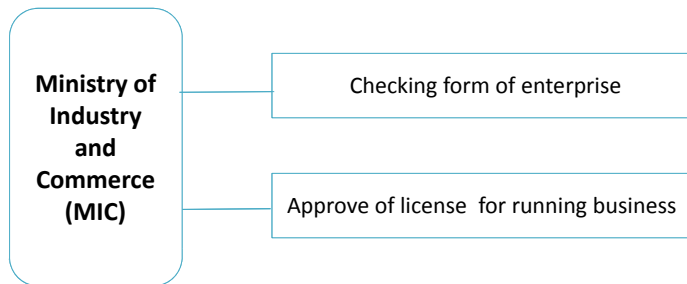
➤ Organization related to offer insurance license for investment (Cont).

✓ Chart of Ministry of Planning and Investment on Insurance investment.



➤ **Organization related to offer insurance license for investment (Cotn).**

✓ **Chart of Ministry of Industry and Commerce on insurance enterprise.**



Thank you very much for your attention