

RÉSEAU DES  
**SADC**  
DU QUÉBEC

**Building capacities in  
rural Canada:**

**The model of Rural  
University partnership**

**Rural  
Secrétariat**



# Rural University partnership

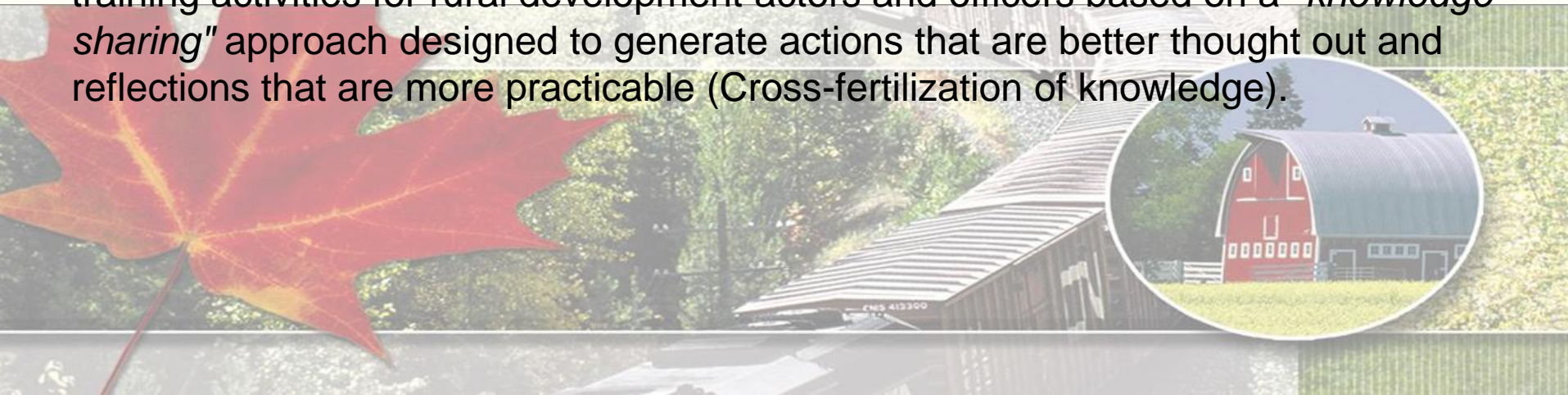
## Partners

A network of Université du Québec professors in rural and regional development studies various development networks, provincial as well as local, in rural areas:

- Community Future corporations in Québec;
- *Centres locaux de développement* (CLDs) (Local Centers for Development);
- *Solidarité rurale du Québec*;
- Canadian Rural Secretariat.

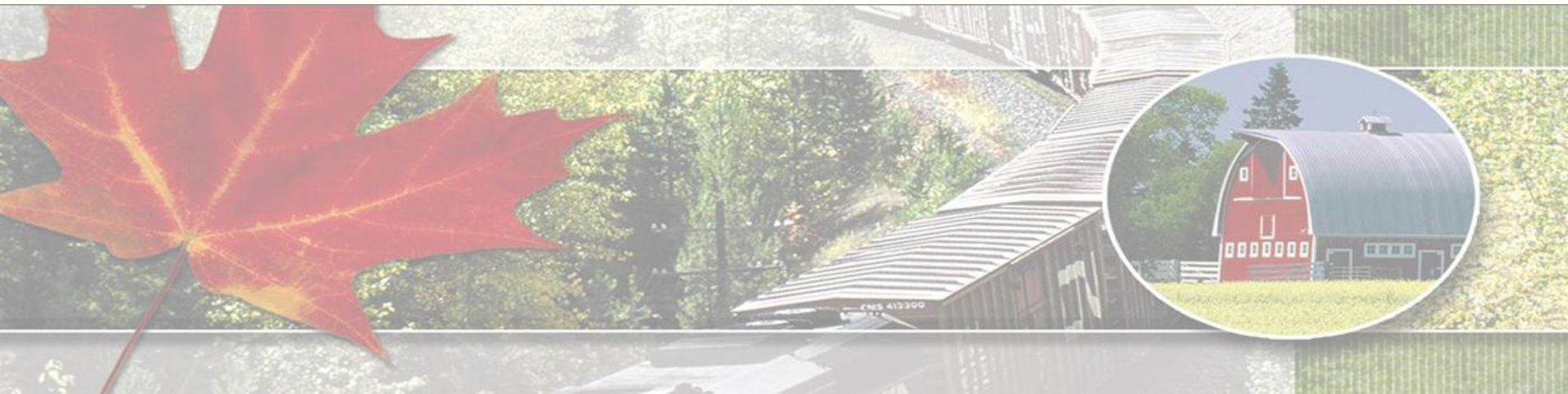
## Mission of Rural University

To support the development of rural areas and communities by initiating ongoing training activities for rural development actors and officers based on a "*knowledge-sharing*" approach designed to generate actions that are better thought out and reflections that are more practicable (Cross-fertilization of knowledge).



## Objectives

- The building of skills among rural actors and development officers;
- The sharing of different knowledge to support the development of rural areas and communities;
- The promotion and enhancement of social and institutional innovations generated by rural dwellers and transferable to others.



## What is it? What are the activities?

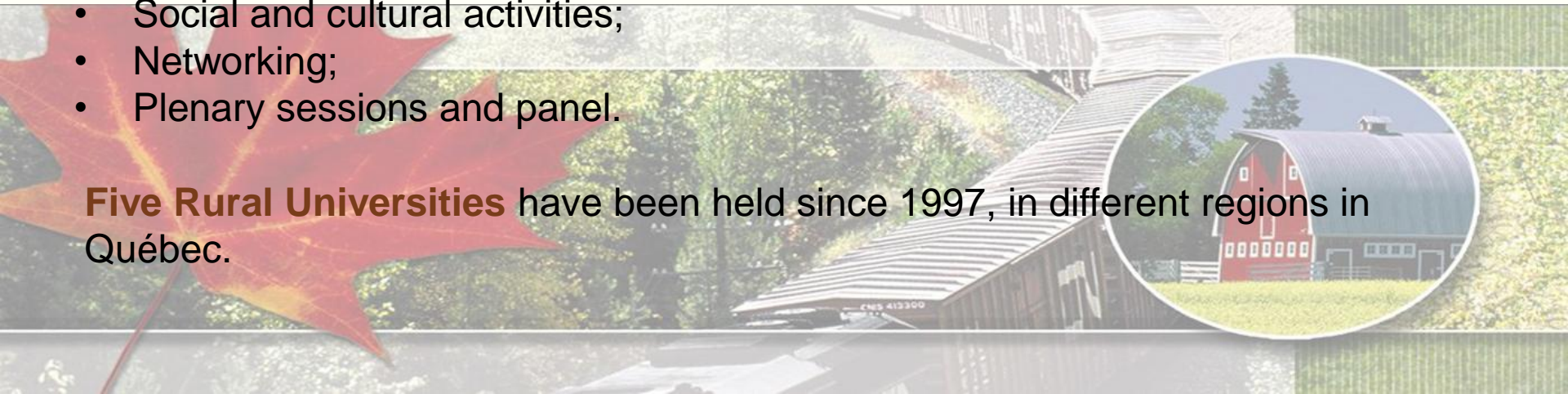
*It is a one week event :*

- Happening in a rural part of Québec;
- Gathering more than 400 people : practionners of rural development, academics (researchers and students), elected officials, gouvernement officers, citizens.

*Typical activities consist :*

- **Presentations** by academics of reaserch results on themes related to rural development;
- **Workshops/discussions** on those same themes;
- Field visits to entreprises or projects sites illustrating those themes;
- Social and cultural activities;
- Networking;
- Plenary sessions and panel.

**Five Rural Universities** have been held since 1997, in different regions in Québec.

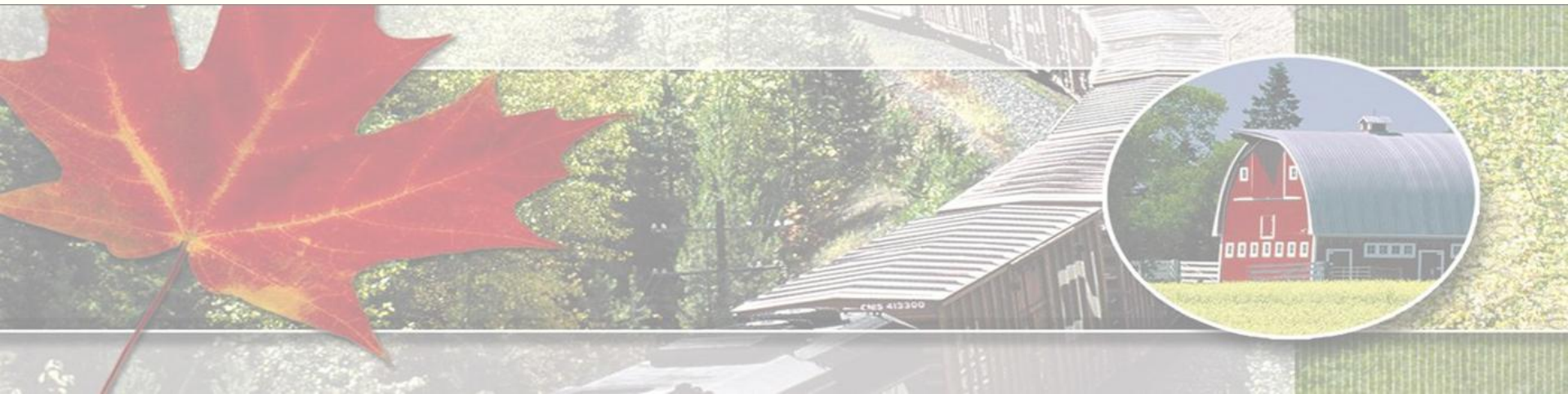


## Quebec Rural University as a model

Rural Secretariat recognized the Quebec Rural University as a model for Rural development and community capacity building. The UQR was then included in the Rural Secretariat research program : **Models for Rural Development and Community Capacity Building.**

**URQ** was then assessed to provide some information on different aspects of rural development that were important to the Rural Secretariat :

- partnerships;
- CCB;
- participatory evaluation as a tool for rural development.



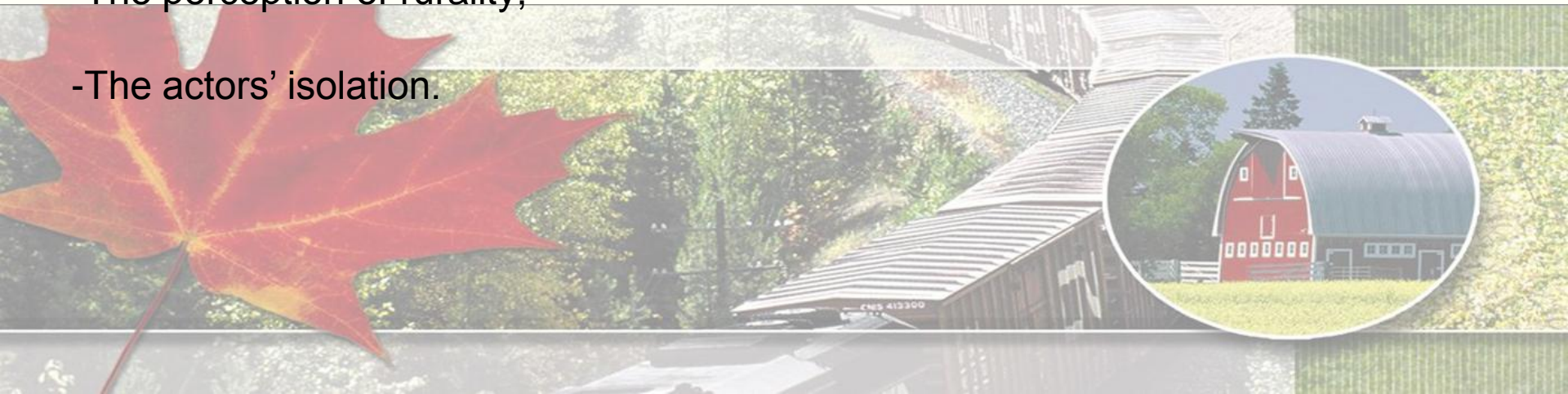
## Evaluation process

The URQ model was evaluated based on a participatory approach.

The logical framework is a tool that uses a flow chart to describe a program or intervention in a synthetic or structured manner.

### Three intervention targets:

- Skills development;
- The perception of rurality;
- The actors' isolation.



## Outcomes and repercussions

### Skills development

“This event does indeed seem to enable the two groups to share their knowledge and respective visions”.

For development actors: “QRU contributes to developing a better understanding of rural issues and to the acquiring of new knowledge”.

For academics: “the QRU enables them to enrich their teaching and become more aware of the problem areas facing development organizations”.

### The perception of rurality

*QRU contributes to:*

- changing people’s understanding of the problems and issues associated with rurality;
- making people prouder of their region;
- mobilizing a large number of people around an event.



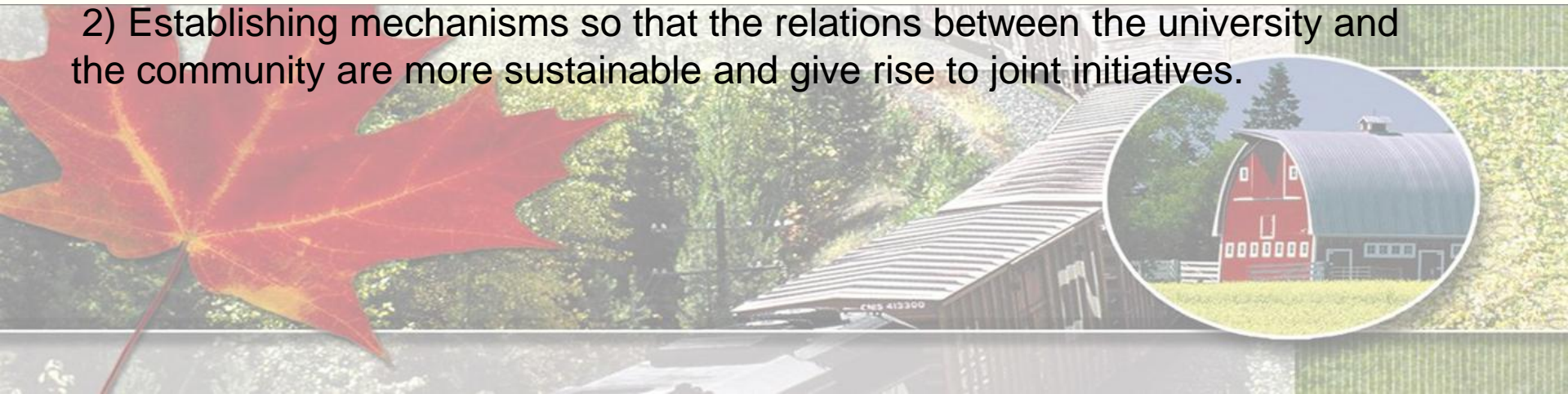
## Outcomes and repercussions

### Players' isolation

Mobilization, networking and the implementation of partnership projects are the most obvious signs of this new dynamic.

Two elements maximize the outcomes and repercussions :

- 1) A greater fostering of networking.
- 2) Establishing mechanisms so that the relations between the university and the community are more sustainable and give rise to joint initiatives.

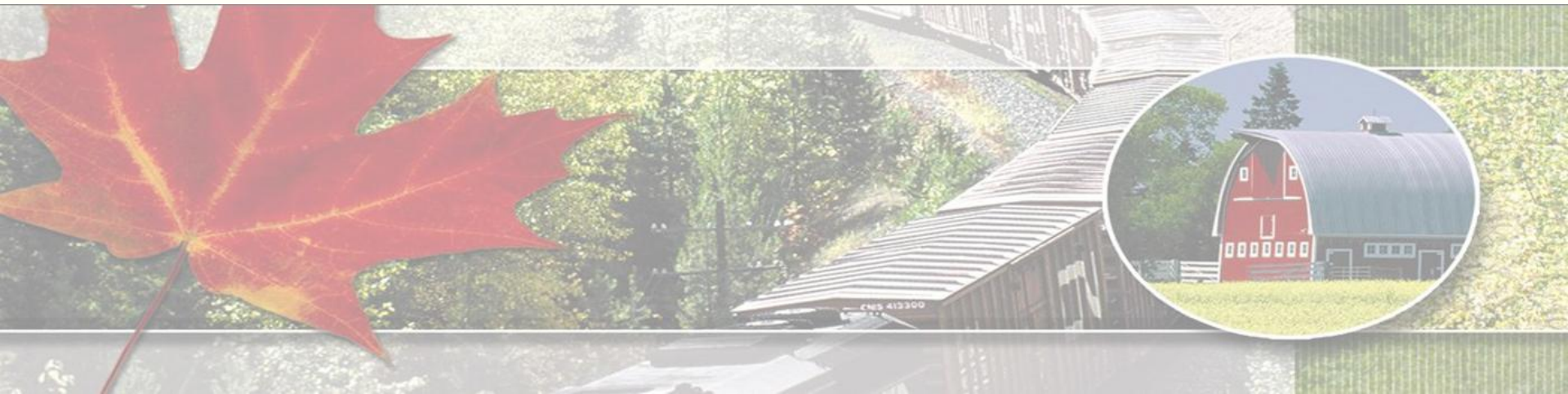




## Relevance of the URQ model

- The unique nature of the event itself;
- The apolitical aspect of the URQ;

“Also the URQ seems to provide a relevant means of moving closer to its own ultimate objective: community capacity development”.



## ***“Exportability” of the URQ model***

- *Existence of a regional university network;*
- *An active network that truly care about the problems associated with rurality;*
- *The possibilities of bringing together organizations in a neutral setting;*
- *Certain maturity with regards to research, reflection and the actions to be taken;*
- *The presence and interest of major financial partners;*
- *The support and commitment of heads of development organizations and governments (federal and provincial).*





**CFDC**  
**CBDC**

For more than 25 years

# Rural Secrétariat

*...supporting local  
solutions to local  
challenges*



Canada 