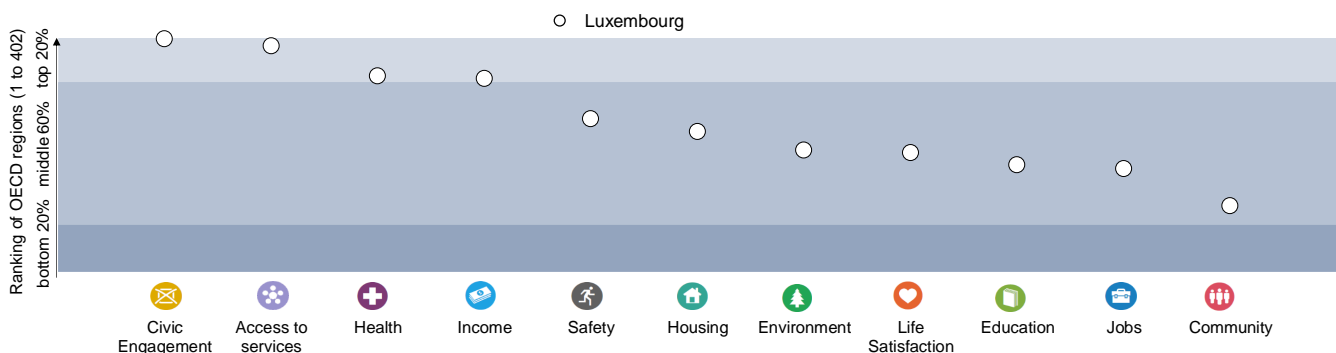


Luxembourg ranks above the OECD median region in 9 out of 13 well-being indicators.

In Luxembourg, subnational governments carry out 36% of total public investment, compared to an OECD average of 57%.

Differences in well-being across regions



Relative ranking Luxembourg with the best and worst outcomes in the 11 well-being dimensions, with respect to all 402 OECD regions. Each well-being dimension is measured by the indicators in the table below.

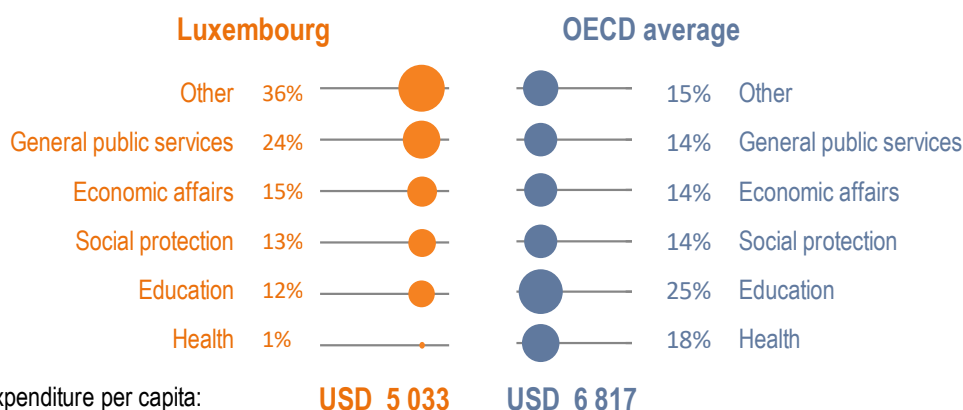
Luxembourg is among the top 2% of OECD regions in civic engagement, access to services (share of households with broadband access), health (life expectancy and mortality rate) and income, whereas it ranks among the bottom 30% in terms of community (perceived social network support). Luxembourg fares better than the OECD median region in 9 out of 13 well-being indicators.

	Country Average	OECD median region
Civic engagement		
Voters in last national election (%), 2017 or latest year	91.2	70.9
Access to services		
Households with broadband access (%), 2017	97.0	78.0
Health		
Life Expectancy at birth (years), 2016	82.7	80.4
Age adjusted mortality rate (per 1 000 people), 2016	6.9	8.1
Income		
Disposable income per capita (in USD PPP), 2016	29 279	17 695
Jobs		
Employment rate 15 to 64 years old (%), 2017	64.9	67.7
Unemployment rate 15 to 64 years old (%), 2017	5.6	5.5
Safety		
Homicide Rate (per 100 000 people), 2016	0.9	1.3
Housing		
Rooms per person, 2016	2.0	1.8
Life Satisfaction		
Life satisfaction (scale from 0 to 10), 2013	7.0	6.8
Education		
Labour force with at least upper secondary education (%), 2017	79.7	81.7
Environment		
Level of air pollution in PM 2.5 (µg/m³), 2015	12.3	12.4
Community		
Perceived social network support (%), 2013	87.4	91.4

Source: OECD Regional Database. Visualisation: <https://www.oecdregionalwellbeing.org>. OECD regions refer to administrative tier of subnational government, Luxembourg is composed of one state - region; (2) Household income per capita data are based on USD constant PPP, constant prices (year 2010).



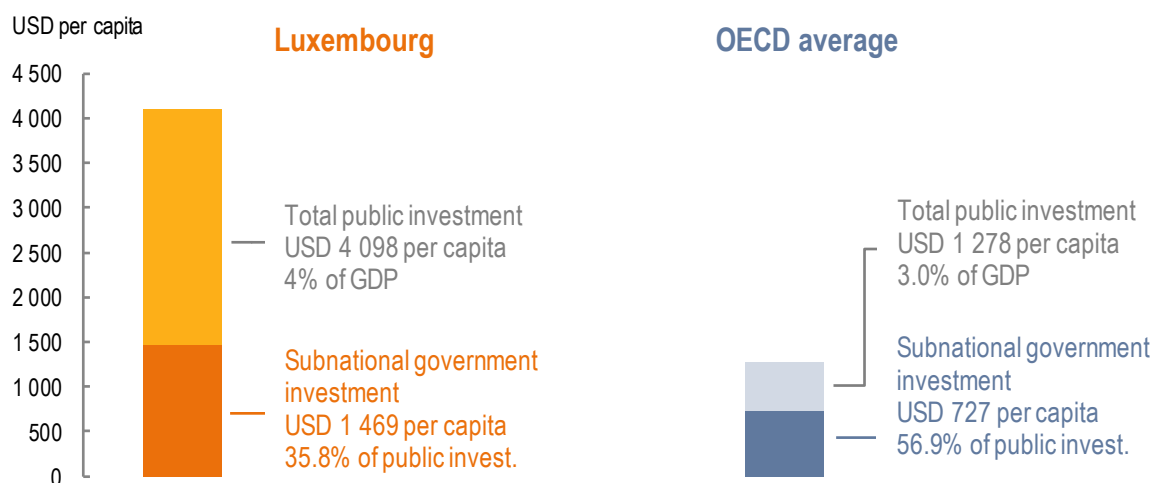
Subnational government expenditure by function As a share of total subnational government expenditure, 2016



Subnational government expenditure amounts to **USD 5 033 per capita** in Luxembourg compared to an OECD average of USD 6 817. In Luxembourg, this is equivalent to **11.7% of total public expenditure** and to **4.9% of GDP**. In comparison, across the OECD, subnational government expenditure accounts for 40.4% of total public expenditure and for 16.2% of GDP. General public services and 'Other' functions (housing and community amenities, recreation, culture and religion; environment; public order and safety) are the two largest spending items for subnational governments in Luxembourg. Together, they represent **60%** of subnational expenditure compared to 29% in the OECD area.

In Luxembourg, subnational governments carry out **35.8% of total public investment**, compared to an OECD average of 56.9%.

Role of subnational governments in public investment Subnational government public investment per capita, 2016



Source: OECD Subnational Government Structure and Finance Database.

OECD Regions and Cities at a Glance 2018

The 2018 edition of OECD Regions and Cities at a Glance shows how regions and cities contribute to national growth and the well-being of societies. It updates its regular set of region-by-region indicators, examining a wide range of policies and trends and identifying those regions that are outperforming or lagging behind in their country.

Consult this publication on line: <https://oe.cd/pub/2n9>

